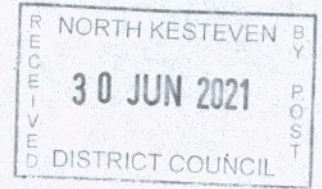


4/6/2021

Glamping Pods — Chester Composites



ABOUT US ROWING BOAT REPAIR GLAMPING PODS CUSTOM GRP MOULDING CONTACT



Glamping Pods

Glamping Pods

Contact Us

Our modular glamping pod can be used for a wide array of applications from a Glamping business to a small garden room.

The modular construction means you can choose the size, colour options and roofing options to suit your needs. Our GRP glamping pods are maintenance free and don't use timber in any of the superstructure. We use the same high quality materials to build our pods that go into luxury Yachts.

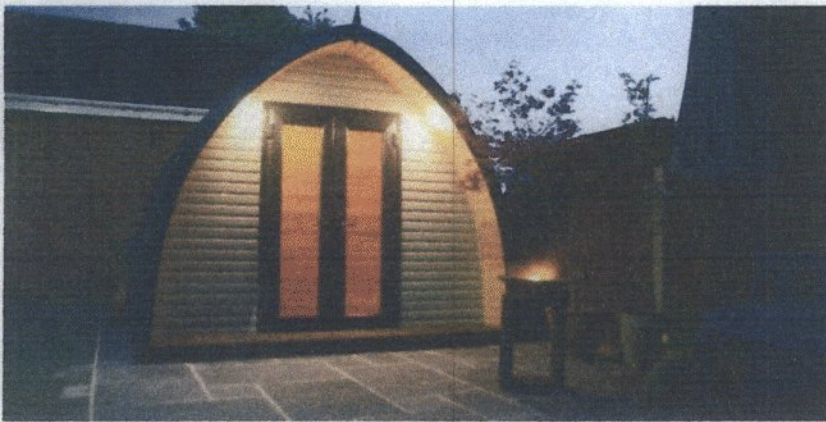
Please get in contact for a quote or further information on any of our products and services. Alternatively take a look at our sister site www.countypods.com

Monday to Friday - 9:00am - 5:00pm

Office Contact

Tel: +44 (0)1244 880658

info@chestercomposites.com



Features

- Standard sizes are 5m x 3m custom sizes can be supplied
- Weather resistant gelcoat exterior
- Made using a fire retardant additive to ensure the safest product possible
- Water tight before roofing applied
- Wooden or GRP interior options
- Fully wired for sockets and lights.



Our pods include:

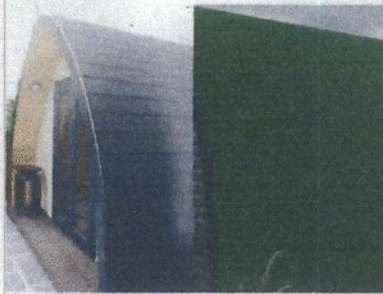
- Roofing Material
- Wiring
- Internal Cladding
- Internal Flooring
- Decking
- Pod Installation

Delivery costs will be quoted
and added to the final price

Roofing Finishes

Our pods are waterproof
without any roofing material,
this means that we can use
any roofing style to achieve
the finish you want. Options
include:

- Artificial Grass
- Felt Shingles
- Wooden Shingles
- Corotile (Aluminium
roofing tiles)



Powered by Squarespace.



X

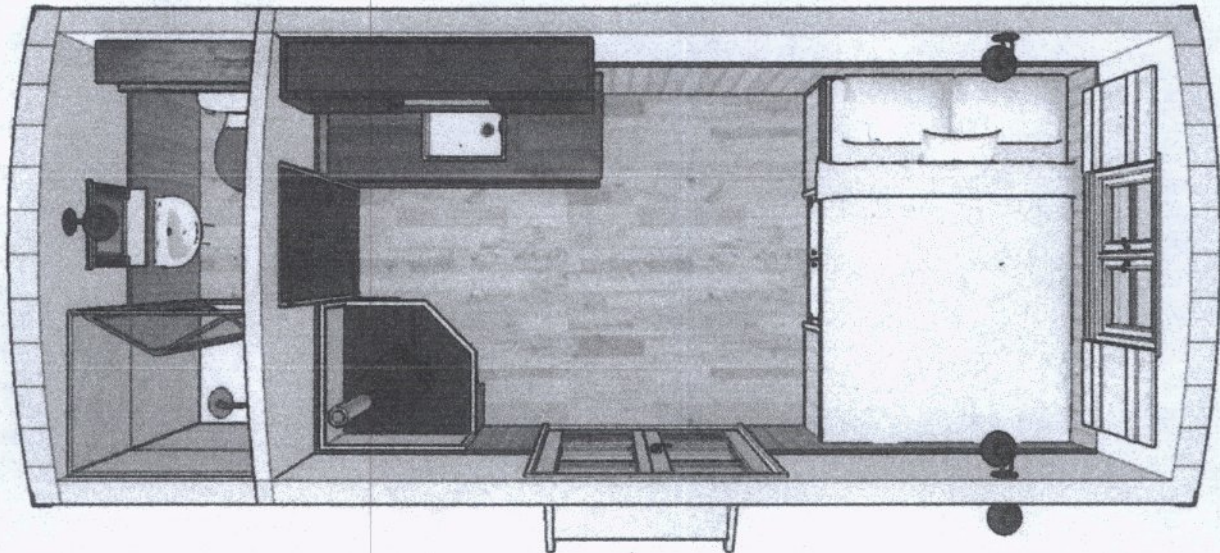


Image: The Poachers 18ft x 7.5ft hut by English Shepherd's Huts

5.9m x 2.3m

Plankbridge have also mocked up their bigger Cabin hut, as seen below, which also measures 18ft in length.

As you can see from both of these large floor plans, they are quite similar in design in terms of where the main big ticket furniture items reside. The double bed and hut bathroom tend to be at either end of the hut with the kitchen and living space in the middle. These two designs have different door set-ups and window arrangements, plus the Plankbridge one has incorporated a radiator and oven.

Between manufacturers all designs will differ as they are unique to them and each hut maker will have their quirks and hallmarks, whether this is the floor plan and furniture arrangement or the hut chassis design and build. Of course, material use will also differ too.



X

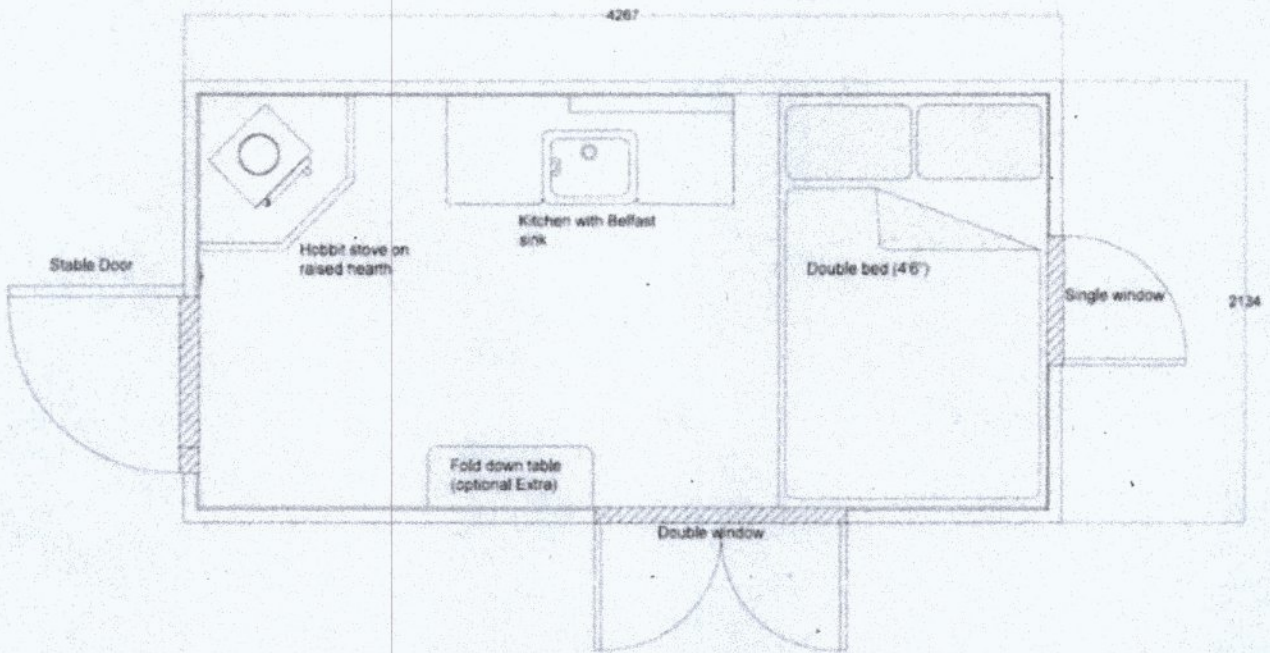


Image: 14ft x 7ft shepherd's hut by Pumphrey and Weston.

The floor plan above comes from Pumphrey and Weston and is a little bigger than the traditional versions at 14ft x 7ft.



They have shown you how this one could be fitted out with a double bed, kitchenette, small wood-burning stove and fold down table. Looks superb. Pumphrey and Weston also do 16ft and 18ft versions which can come with a toilet and shower room. Find more details on their website here.

