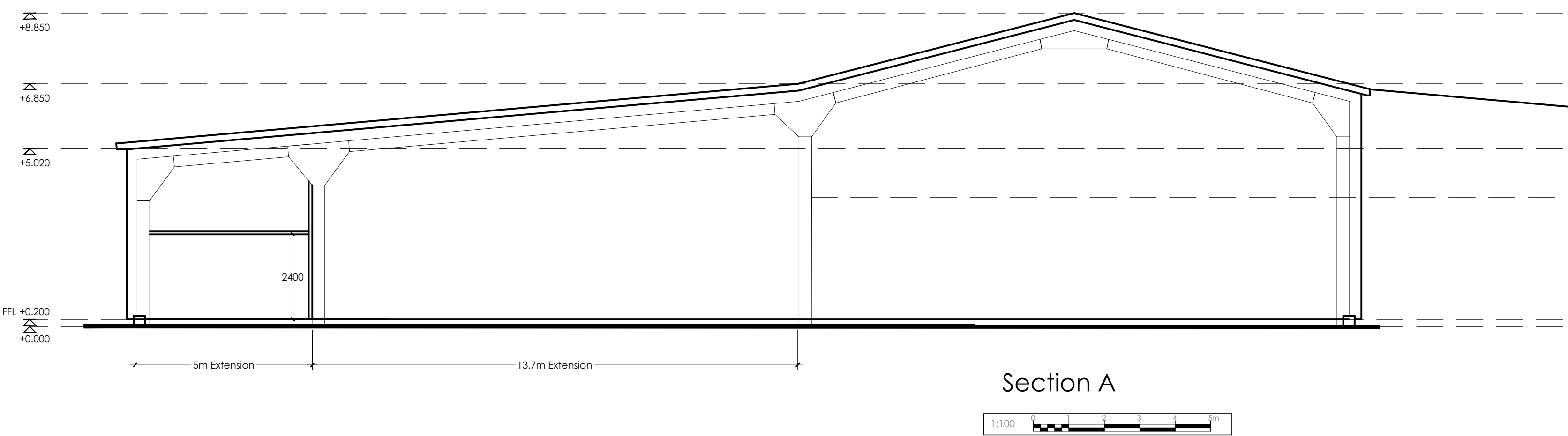
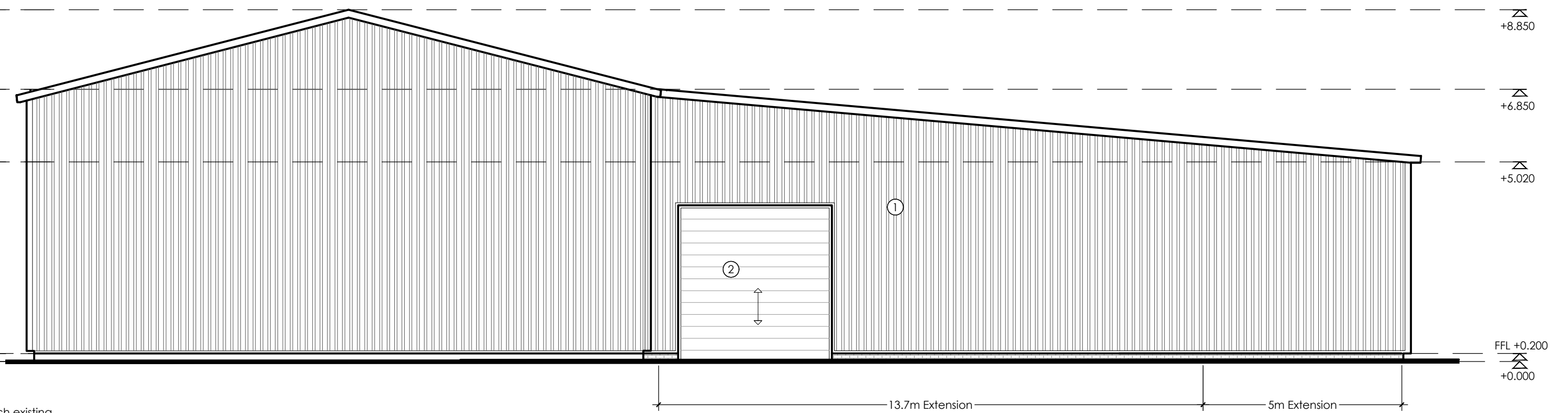
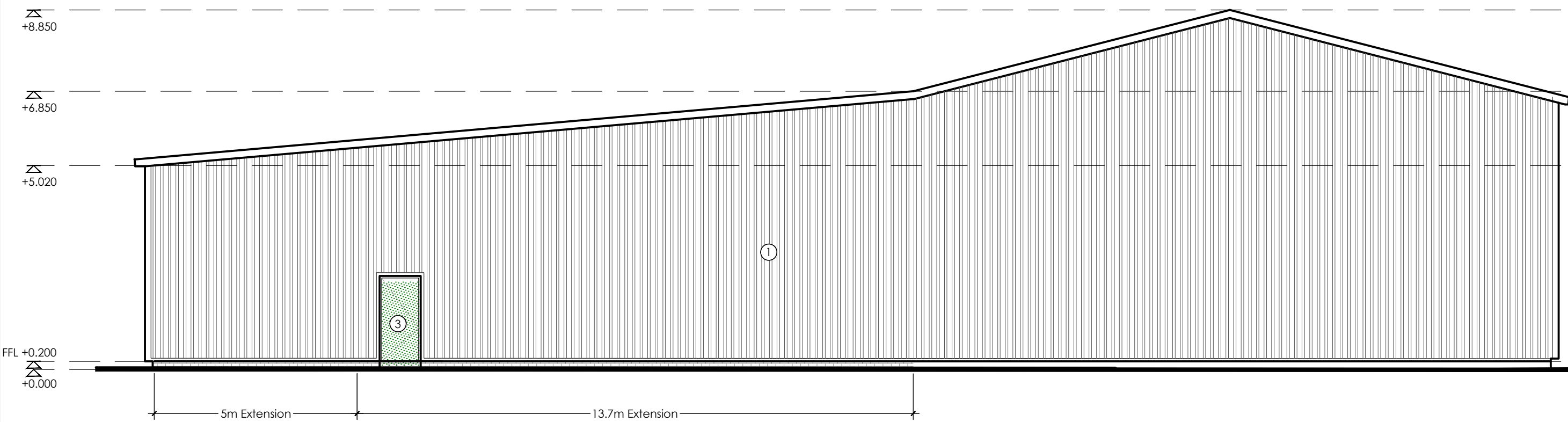
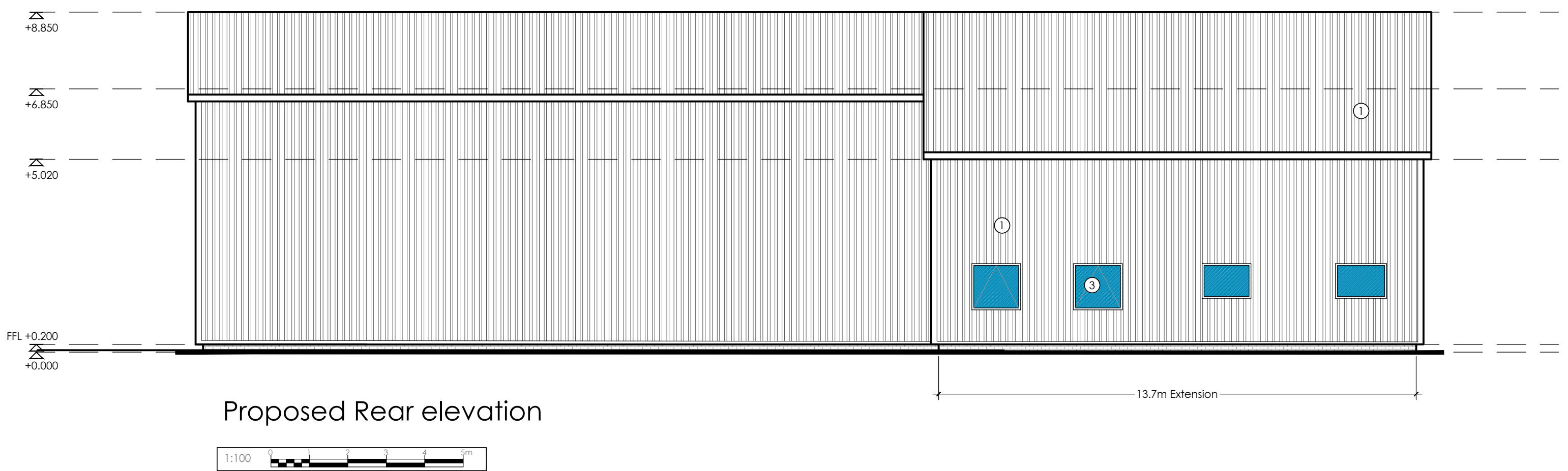
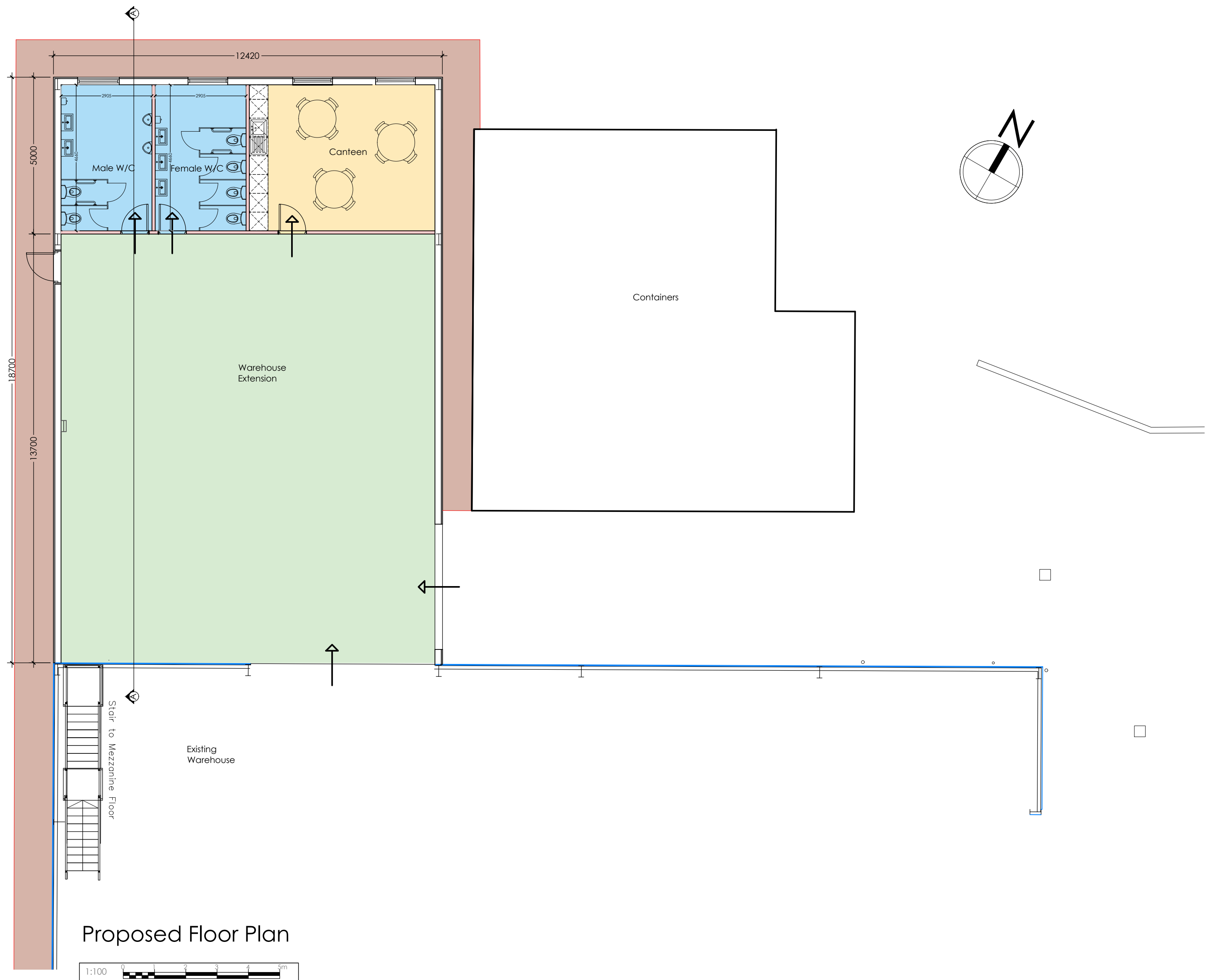


COPYRIGHT NOTICE:
This drawing is the copyright of the Architects
and may not be reproduced or used except
by written permission.

Notes
This drawing is to be read in conjunction with all relevant drawings and specifications.
Do not scale from this drawing, use figured dimensions only. All levels and dimensions to be checked on site. All
level and dimensional discrepancies are to be brought to the immediate attention of HSSP Architects Ltd.
Responsibility cannot be accepted for alterations or deviations from the design without prior
agreement of HSSP Architects Ltd.
Copyright reserved. This drawing may only be used for the client and location specified in the title block. It may not
be copied or distributed in any form without prior written consent from HSSP Architects Ltd.
Prior to any works commencing on site, the engineer is to be contacted regarding the current status, revision or
regulatory approval of this drawing.
All work to be to the entire satisfaction of the HSE or Local Authority not withstanding anything drawn or
indicated on these drawings. All waterworks and materials to be the best of their respective kind and of equal
equivalent to the standards listed in the Code of Practice. All materials, dimensions and items to be
contained or checked and verified on the before specific areas of work are commenced.
This drawing is to be read in conjunction with clients specifications/requirements and structural engineers
design.



- Materials (see also dwg ref.):
1. Metal Profile Sheet to match existing
 2. Roller Shutter
 3. Aluminium doors/ Windows

Rev.	Date	Drawn
1	21/06/21	DCW
2	21/06/21	DCW
3	21/06/21	DCW
4	21/06/21	DCW
5	21/06/21	DCW
6	21/06/21	DCW
7	21/06/21	DCW
8	21/06/21	DCW
9	21/06/21	DCW
10	21/06/21	DCW
11	21/06/21	DCW
12	21/06/21	DCW
13	21/06/21	DCW
14	21/06/21	DCW
15	21/06/21	DCW
16	21/06/21	DCW
17	21/06/21	DCW
18	21/06/21	DCW
19	21/06/21	DCW
20	21/06/21	DCW
21	21/06/21	DCW
22	21/06/21	DCW
23	21/06/21	DCW
24	21/06/21	DCW
25	21/06/21	DCW
26	21/06/21	DCW
27	21/06/21	DCW
28	21/06/21	DCW
29	21/06/21	DCW
30	21/06/21	DCW
31	21/06/21	DCW
32	21/06/21	DCW
33	21/06/21	DCW
34	21/06/21	DCW
35	21/06/21	DCW
36	21/06/21	DCW
37	21/06/21	DCW
38	21/06/21	DCW
39	21/06/21	DCW
40	21/06/21	DCW
41	21/06/21	DCW
42	21/06/21	DCW
43	21/06/21	DCW
44	21/06/21	DCW
45	21/06/21	DCW
46	21/06/21	DCW
47	21/06/21	DCW
48	21/06/21	DCW
49	21/06/21	DCW
50	21/06/21	DCW
51	21/06/21	DCW
52	21/06/21	DCW
53	21/06/21	DCW
54	21/06/21	DCW
55	21/06/21	DCW
56	21/06/21	DCW
57	21/06/21	DCW
58	21/06/21	DCW
59	21/06/21	DCW
60	21/06/21	DCW
61	21/06/21	DCW
62	21/06/21	DCW
63	21/06/21	DCW
64	21/06/21	DCW
65	21/06/21	DCW
66	21/06/21	DCW
67	21/06/21	DCW
68	21/06/21	DCW
69	21/06/21	DCW
70	21/06/21	DCW
71	21/06/21	DCW
72	21/06/21	DCW
73	21/06/21	DCW
74	21/06/21	DCW
75	21/06/21	DCW
76	21/06/21	DCW
77	21/06/21	DCW
78	21/06/21	DCW
79	21/06/21	DCW
80	21/06/21	DCW
81	21/06/21	DCW
82	21/06/21	DCW
83	21/06/21	DCW
84	21/06/21	DCW
85	21/06/21	DCW
86	21/06/21	DCW
87	21/06/21	DCW
88	21/06/21	DCW
89	21/06/21	DCW
90	21/06/21	DCW
91	21/06/21	DCW
92	21/06/21	DCW
93	21/06/21	DCW
94	21/06/21	DCW
95	21/06/21	DCW
96	21/06/21	DCW
97	21/06/21	DCW
98	21/06/21	DCW
99	21/06/21	DCW
100	21/06/21	DCW

hssp architects

Pera Business Park, Nottingham Road
Melton Mowbray, LE13 0PB

Telephone: 01664 563 288 Fax: 01664 563 360
E-Mail: info@hssparchitects.co.uk Web: www.hssparchitects.co.uk

Project:
Extension and alterations to existing B2
Brinvale Farm
Broughton Lane Long Clawson
Brinvale Bird Foods

Title:
Proposed plan and elevation

Scale:
1:100

Drawn:
DCW

Checked:
-

Date:
Jun 21

Drawing No:
8456-03-01

Revision:
A

HSSP A1