

PERPEND AIR VENTS SHOWN ON ELEVATIONS ARE INDICATIVE ONLY AND MUST BE SET-OUT WITHIN MAXIMUM SPACING DENOTED; ALL TO SUIT MASONRY COURSING

Enhanced plots to Steading Area
 PE wet dash system from Stonepack aggregate supplies colour to be white and Edenhall Haig multi base course with coloured mortar to match the brick. Feature bays, lintels, cills & jambs to be smooth buff ashlar precast concrete. Roofs to be finished with Redland Rosemary classic red clay roof tiles. Roofs to have clipped eaves.

WINDOW KEY.

- DENOTES WINDOWS TO BE SUPPLIED AS TOUGHENED SAFETY GLASS.
- EXE** DENOTES EMERGENCY EGRESS WINDOW WITH UN-OBSTRUCTED OPENING OF AT LEAST 850MM X 850MM GIVING AN AREA OF 0.53 SQ.M WITH THE BOTTOM OF THE OPENABLE AREA AT 1100MM MAX ABOVE FLOOR LEVEL - CONFORMING TO APPROVED DOCUMENT SECTION 2 (FIRE) OF THE SCOTLAND BUILDING STANDARDS.
- FIRST FLOOR WINDOWS - NOTE:**
 WINDOW HEAD HEIGHT FROM FIRST FLOOR F.F.L. TO BE -100MM IN ALL INSTANCES.
 FIRST FLOOR WINDOW CILL HEIGHTS FROM F.F.L. TO BE AS FOLLOWS:
 WINDOW HEIGHT CILL HEIGHT FROM F.F.L.
 1050MM 1050MM
 1200MM 850MM
 1300MM 710MM
 NB - WHERE GLAZING IS WITHIN 600MM OF F.F.L. IN 1300MM HIGH WINDOWS AT FIRST FLOOR LEVEL, ALLOW FOR GUARDING RAIL TO BE INSTALLED BETWEEN JAMBS TO SATISFY REQUIREMENTS FOR BUILDING STANDARDS CLAUSE 4.8.2 - COLLISION WITH GLAZING)

EXTENT OF PHOTOVOLTAIC (P.V.) ARRAY & POSITION ON RELEVANT ELEVATION, SUBJECT TO SITE-PLANT LOCATION & ORIENTATION OF DWELLING. REFER TO SEPARATE S&P SCHEDULES & SPECIALISTS DETAILED DRAWINGS FOR EXACT REQUIREMENTS

RELAND ROSEMARY CLASSIC RED CLAY ROOF TILES
 ALL EXTERNAL WALLS TO INCORPORATE VERTICAL MOVEMENT JOINTS FOR ALL STRAIGHT RUNS AT 8M C/C - BLOCKWORK & RENDER. EXTERNAL LEAF MOVEMENT JOINT LOCATIONS INDICATIVE - TO BE STRICTLY IN ACCORDANCE WITH STRUCTURAL ENGINEER'S SPECIFICATION & DETAILS

RECONSTITUTED STONE HEADS WHERE SHOWN
 RECONSTITUTED STONE JAMBS WHERE SHOWN
 RECONSTITUTED STONE CILLS WHERE SHOWN

PERPEND AIR VENTS AT 80MM C/C MAX AT HIGH & LOW LEVEL TO ALL CAVITIES AS INDICATED

RENDER FACED TO BE 10MM TARMAC HELMET LITE LIGHTWEIGHT 3.8NMM AGGREGATE BLOCK TO ALLOW FOR WEBER REND. 10MM BASECOAT & 9MM TOPCOAT (2 COAT) RENDER APPLICATION 19MM THICK WITH FINISH TO SEPARATE DETAIL

WETDASH RENDER ON 100MM TARMAC HELMET LITE LIGHTWEIGHT 3.8NMM AGGREGATE BLOCK



FRONT ELEVATION.

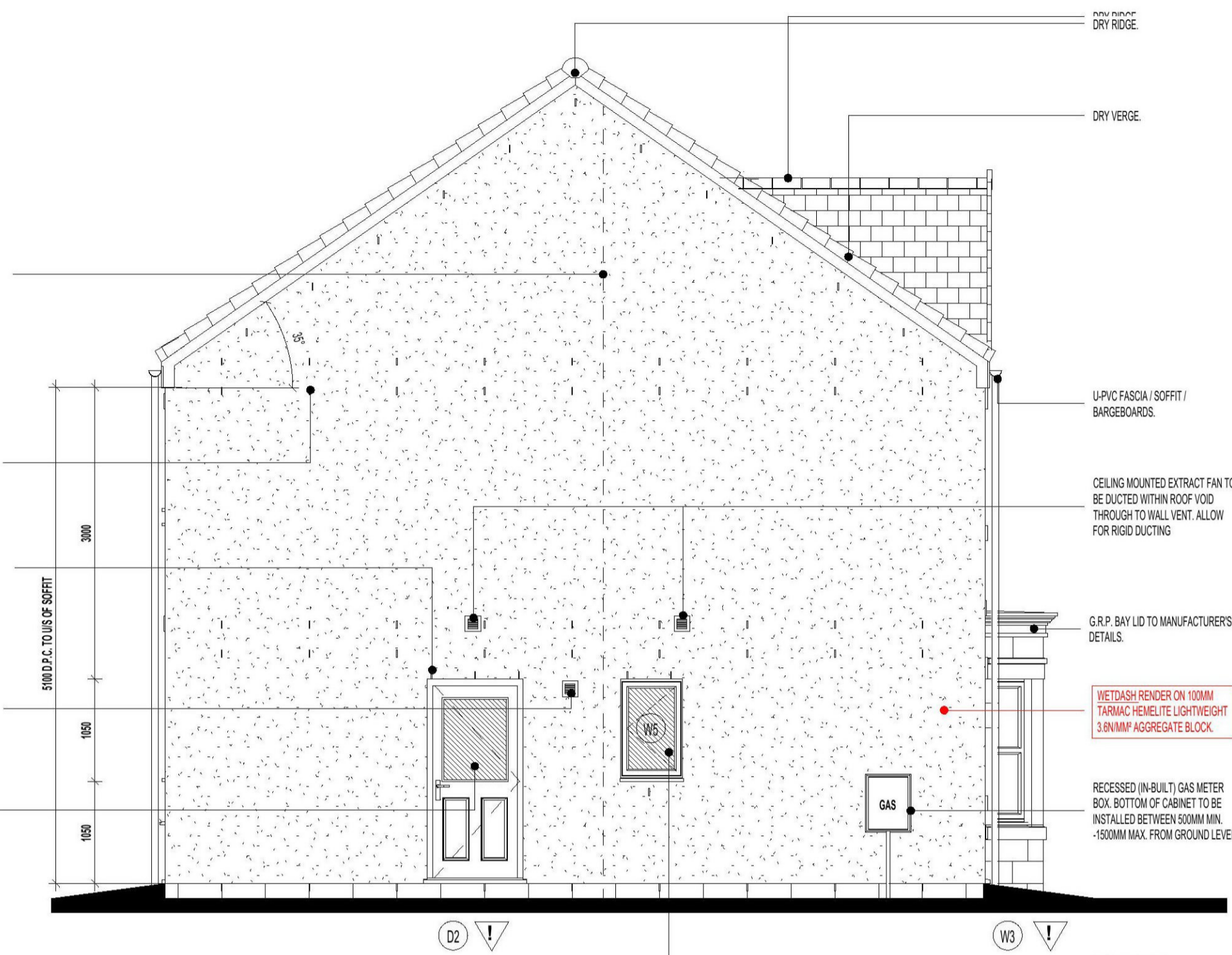
ALL EXTERNAL WALLS TO INCORPORATE VERTICAL MOVEMENT JOINTS FOR ALL STRAIGHT RUNS AT 8M C/C - BLOCKWORK & RENDER. EXTERNAL LEAF MOVEMENT JOINT LOCATIONS INDICATIVE - TO BE STRICTLY IN ACCORDANCE WITH STRUCTURAL ENGINEER'S SPECIFICATION & DETAILS

PERPEND AIR VENTS AT 80MM C/C MAX AT HIGH & LOW LEVEL TO ALL CAVITIES AS INDICATED

PERPEND WEEP VENTS AT 45MM C/C MAX ABOVE DOOR AND WINDOW HEAD AS INDICATED.

BALANCED FLUE BOILER EXTRACT TAKEN THROUGH TO EXTERNAL GRILLE ENSURE 300MM MIN. CLEAR DISTANCE FROM ANY OPENING. (REFER TO DETAIL B8)

REAR DOOR TO BE IG DOOR REF. NGB OR SIMILAR APPROVED.



L.H. SIDE ELEVATION.

This copy has been made by or with the authority of Midlothian Council pursuant to Section 47 of the Designs and Patents Act 1988. Unless that Act provides a relevant exception to copyright, the copy must not be copied without the prior permission of the copyright owner.

No.	DESCRIPTION	DATE

miller homes

Miller Homes Ltd
 Divisional Design
 2 Centro Place
 Pride Park
 Derby
 DE24 8RF
 Telephone 0870 336 4400
 Fax 0870 336 4401
 www.millerhomes.co.uk

Project Title
435S-4B/7P/134Z
WORKING DRAWING
DOUGLAS

Drawing Title
ELEVATIONS - STEADING SITE
PLOTS 134 & 135

Scale 1 : 50 Drawn By D.P Checked By Date 15.07.21

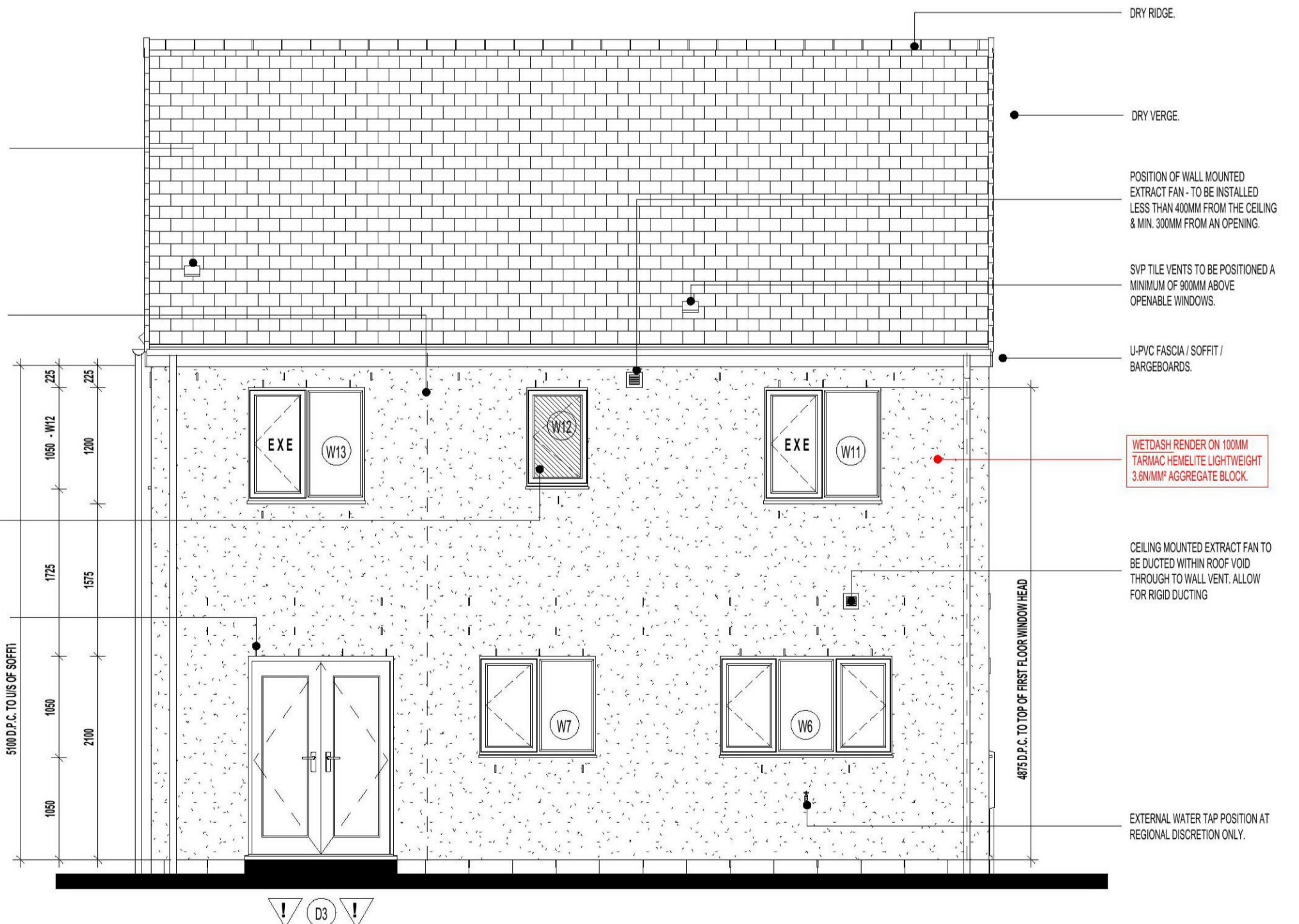
Drawing Number A1-435S4015(STEAD2) Revision -

SIP TILE VENTS TO BE POSITIONED A MINIMUM OF 80MM ABOVE OPENABLE WINDOWS.

ALL EXTERNAL WALLS TO INCORPORATE VERTICAL MOVEMENT JOINTS FOR ALL STRAIGHT RUNS AT 8M C/C - BLOCKWORK & RENDER. EXTERNAL LEAF MOVEMENT JOINT LOCATIONS INDICATIVE - TO BE STRICTLY IN ACCORDANCE WITH STRUCTURAL ENGINEER'S SPECIFICATION & DETAILS

PERPEND WEEP VENTS AT 45MM C/C MAX ABOVE DOOR AND WINDOW HEAD AS INDICATED.

OSBURE GLAZING.



REAR ELEVATION.

POSITION OF WALL MOUNTED EXTRACT FAN - TO BE INSTALLED LESS THAN 40MM FROM THE CEILING & MIN. 300MM FROM AN OPENING.

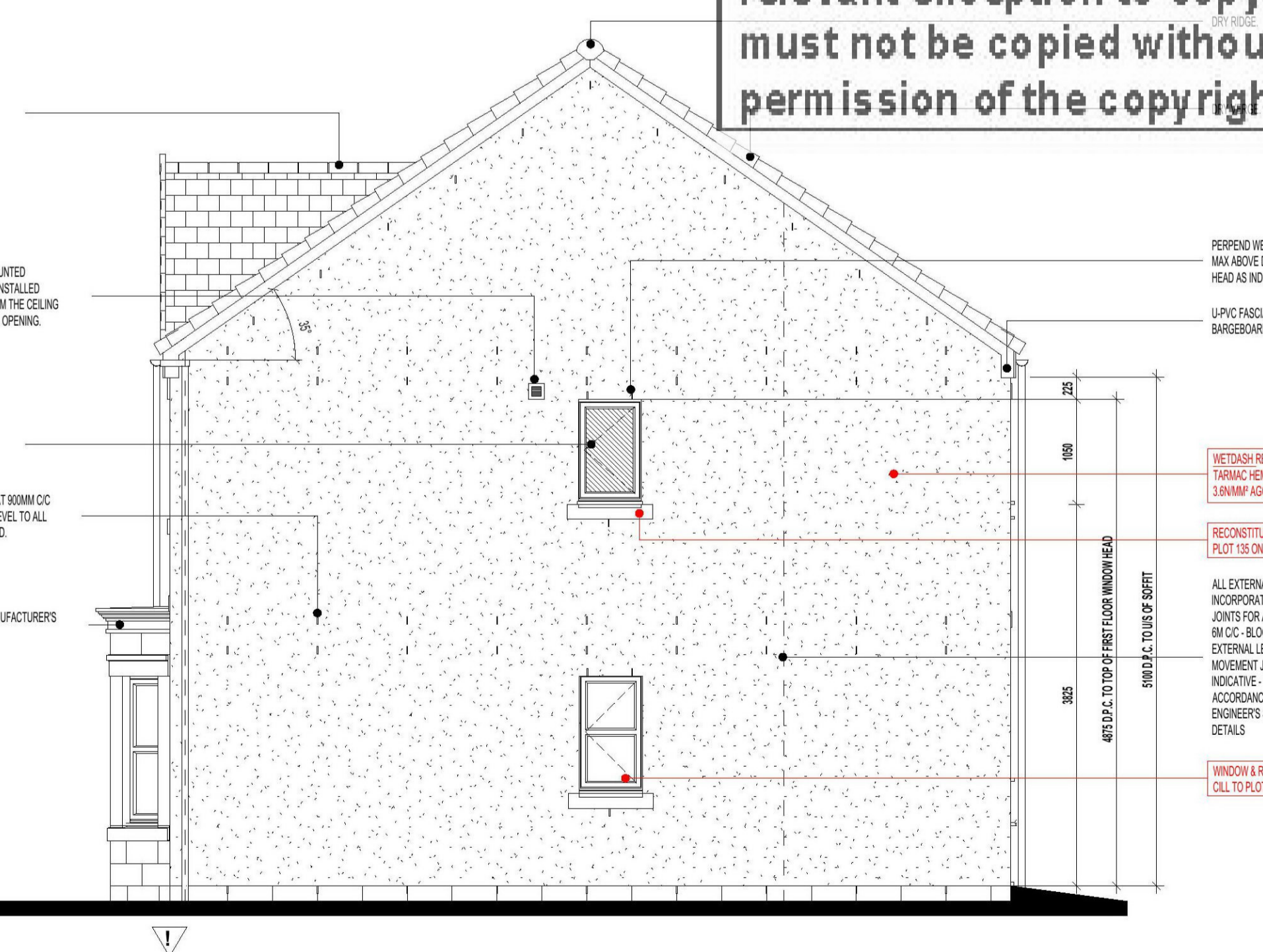
POSITION OF WALL MOUNTED EXTRACT FAN - TO BE INSTALLED LESS THAN 40MM FROM THE CEILING & MIN. 300MM FROM AN OPENING.

OSBURE GLAZING.

PERPEND AIR VENTS AT 80MM C/C MAX AT HIGH & LOW LEVEL TO ALL CAVITIES AS INDICATED.

PERPEND WEEP VENTS AT 45MM C/C MAX ABOVE DOOR AND WINDOW HEAD AS INDICATED.

EXTERNAL WATER TAP POSITION AT REGIONAL DISCRETION ONLY.



R.H. SIDE ELEVATION.