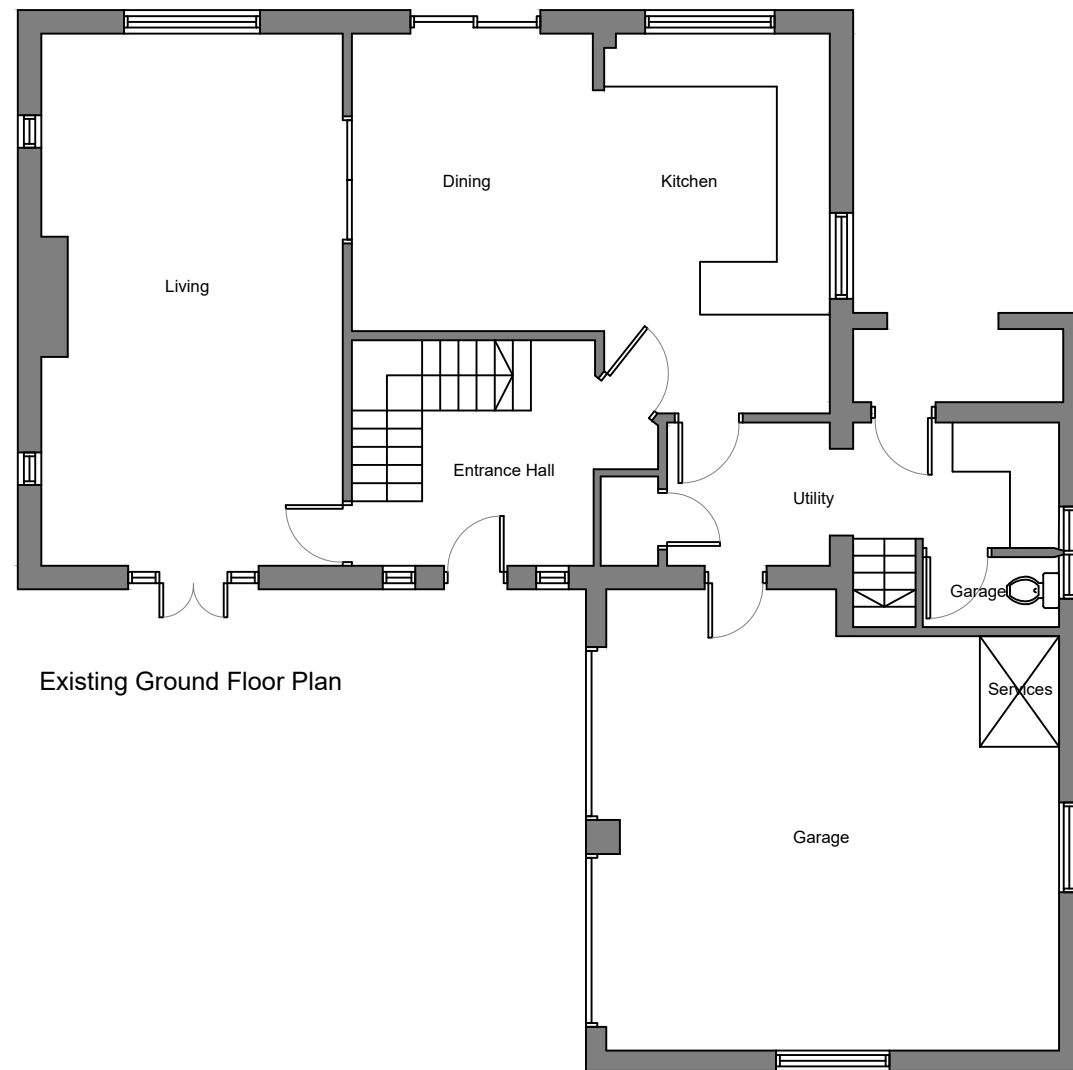


This drawing is COPYRIGHT. It must not be reproduced or disclosed to third parties without our prior permission. Do not scale from this drawing, or, interrogate and use electronic information.

Any discrepancies should be reported immediately.

Any surveyed information incorporated within this drawing cannot be guaranteed as accurate unless confirmed by a fixed dimension. All dimensions are in millimetres unless noted otherwise.



Existing Ground Floor Plan



Existing First Floor Plan

HUGHES

Head Office
29 Broad Street
Newtown
Powys
SY16 2BQ

t - 01686 610311
w - www.hughesarchitects.co.uk

ARCHITECTS

Project Extension and Internal Alterations, Maes Trannon, Trefeglwys, Caersws, SY17 5PS			
Drawing Status Stage 3a		Drawing Title Existing Floor Plans	
Scale 1:100@A3	Date 21.08.20	Drawing No V059.3a.3.100	Rev
Drawn by TM	Checked RL		