

Photographs



BH49 27.80-29.30m



BH49 29.30-30.30m

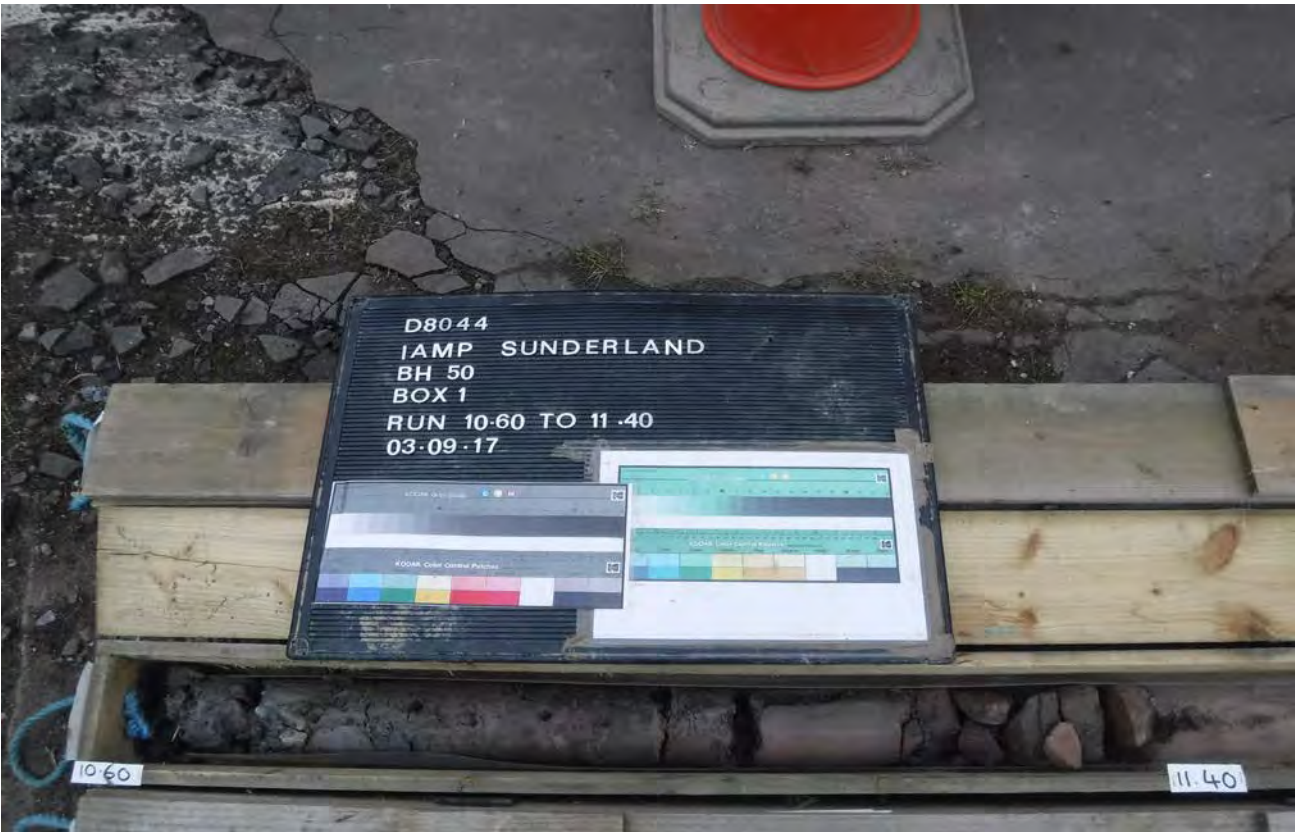
Notes:



Project IAMP Preliminary Investigation
Project No. D8044
Carried out for Sunderland City Council

Plate 45

Photographs



BH50 10.60-11.40m



BH50 11.40-12.40m

Notes:



Project IAMP Preliminary Investigation
Project No. D8044
Carried out for Sunderland City Council

Plate 46

Photographs



BH50 12.40-13.90m



BH50 13.90-15.40m

Notes:



Project IAMP Preliminary Investigation
Project No. D8044
Carried out for Sunderland City Council

Plate 47

Photographs



BH50 15.40-16.35m



BH50 16.35-17.85m

Notes:



Project IAMP Preliminary Investigation
Project No. D8044
Carried out for Sunderland City Council

Plate 48

Photographs



BH50 17.85-19.35m



BH50 19.35-20.85m

Notes:



Project IAMP Preliminary Investigation
Project No. D8044
Carried out for Sunderland City Council

Plate 49

Photographs



BH50 20.85-22.35m



BH50 22.35-23.85m

Photographs



BH50 23.85-26.85m



BH50 26.85-28.20m

Photographs



BH50 28.20-29.70m



BH50 29.70-31.20m

Notes:



Project IAMP Preliminary Investigation
Project No. D8044
Carried out for Sunderland City Council

Plate 52

Photographs



BH51 3.15-4.75m



BH51 4.75-5.65m

| | | |
|--------|--|--|
| Notes: | <div><div><div>Project</div><div>Project No.</div><div>Carried out for</div></div><div><div>IAMP Preliminary Investigation</div><div>D8044</div><div>Sunderland City Council</div></div></div> | <div><div>Plate</div><div>53</div></div> |
|--------|--|--|

Photographs



BH51 5.65-7.15m



BH51 7.15-8.65m

Notes:



Project IAMP Preliminary Investigation
Project No. D8044
Carried out for Sunderland City Council

Plate 54

Photographs



BH51 8.65-10.15m



BH51 10.15-11.70m

Notes:



Project

IAMP Preliminary Investigation

Project No.

D8044

Carried out for

Sunderland City Council

Plate

55

Photographs



BH51 11.70-13.20m

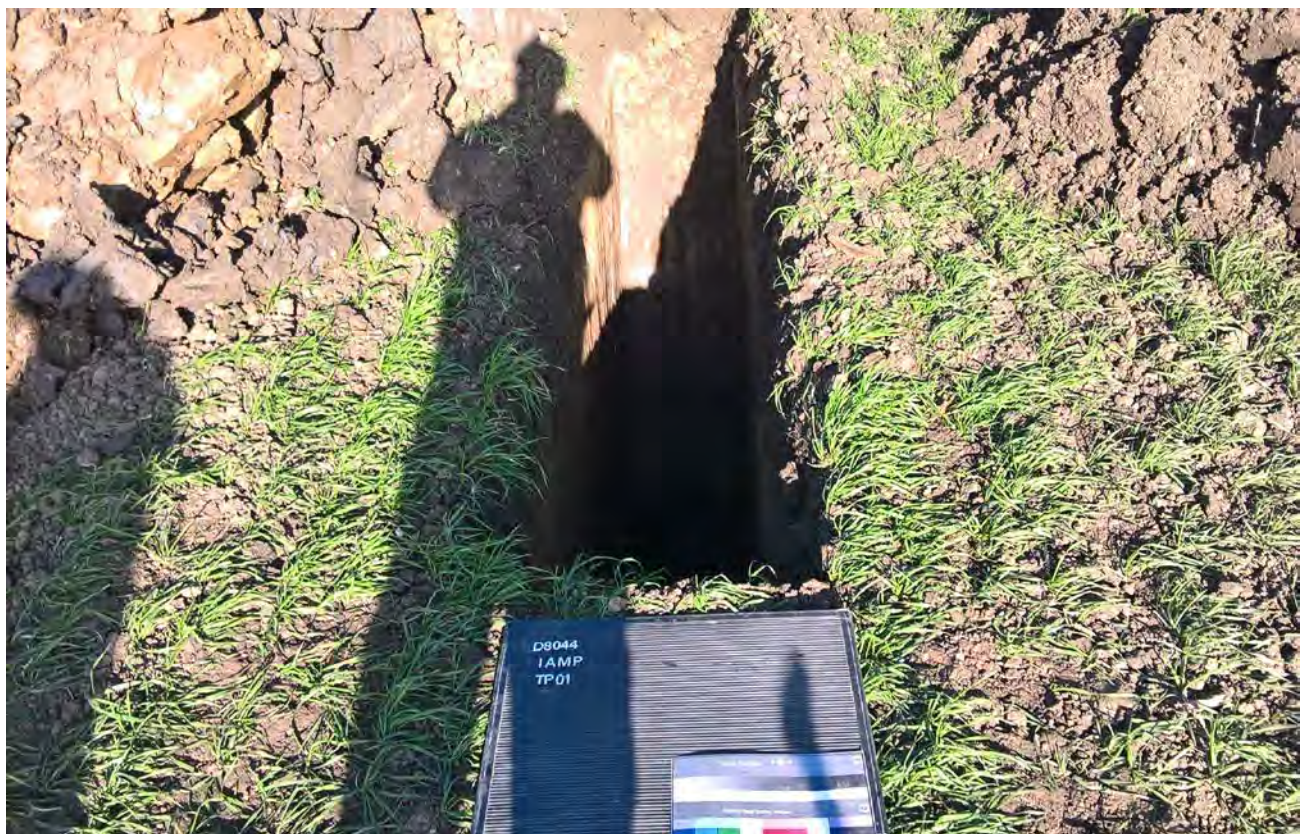
Notes:



Project IAMP Preliminary Investigation
Project No. D8044
Carried out for Sunderland City Council

Plate 56

Photographs



TP01-1



TP01-2

Notes:



Project IAMP Preliminary Investigation
Project No. D8044
Carried out for Sunderland City Council

Plate 1

Photographs



TP01-3

Notes:



Project IAMP Preliminary Investigation
Project No. D8044
Carried out for Sunderland City Council

Plate 2

Photographs



TP02-1



TP02-2

| | | | | |
|--|-----------------|--------------------------------|-------|---|
| <div>Notes:</div> <div></div> | Project | IAMP Preliminary Investigation | Plate | 3 |
| | Project No. | D8044 | | |
| | Carried out for | Sunderland City Council | | |

Photographs



TP02-3

Notes:



Project IAMP Preliminary Investigation
Project No. D8044
Carried out for Sunderland City Council

Plate 4

Photographs



TP03-1



TP03-2

Notes:



Project IAMP Preliminary Investigation
Project No. D8044
Carried out for Sunderland City Council

Plate 5

Photographs



TP04-1



TP04-2

Notes:



Project IAMP Preliminary Investigation
Project No. D8044
Carried out for Sunderland City Council

Plate 6

Photographs



TP04-3

Notes:



Project IAMP Preliminary Investigation
Project No. D8044
Carried out for Sunderland City Council

Plate 7

Photographs



TP05-1



TP05-2

Photographs



TP05-3

Notes:



Project IAMP Preliminary Investigation
Project No. D8044
Carried out for Sunderland City Council

Plate 9

Photographs



TP06-1



TP06-2

| | | | |
|---|-----------------|--------------------------------|-----------------|
| Notes:  | Project | IAMP Preliminary Investigation | Plate 10 |
| | Project No. | D8044 | |
| | Carried out for | Sunderland City Council | |

Photographs



TP06-3

Notes:



Project IAMP Preliminary Investigation
Project No. D8044
Carried out for Sunderland City Council

Plate

11

Photographs



TP07-1



TP07-2

Photographs



TP07-3

Notes:



Project IAMP Preliminary Investigation
Project No. D8044
Carried out for Sunderland City Council

Plate 13

Photographs



TP09-1

Photographs



TP09-2



TP09-3

Photographs



TP10-1



TP10-2

Photographs



TP10-3

Notes:



Project IAMP Preliminary Investigation
Project No. D8044
Carried out for Sunderland City Council

Plate

17

Photographs



TP13-1



TP13-2

Photographs



TP13-3

Notes:



Project IAMP Preliminary Investigation
Project No. D8044
Carried out for Sunderland City Council

Plate 19

Photographs



TP16-1



TP16-2

Photographs



TP16-3

Notes:



Project IAMP Preliminary Investigation
Project No. D8044
Carried out for Sunderland City Council

Plate

21

Photographs



TP16A-1



TP16A-2

Photographs



TP16A-3

Notes:



Project IAMP Preliminary Investigation
Project No. D8044
Carried out for Sunderland City Council

Plate 23

Photographs



TP17-1



TP17-2

Notes:



Project IAMP Preliminary Investigation
Project No. D8044
Carried out for Sunderland City Council

Plate

24

Photographs



TP19-1



TP19-2

Photographs



TP19-3

Notes:



Project IAMP Preliminary Investigation
Project No. D8044
Carried out for Sunderland City Council

Plate 26

Photographs



TP20-1

Notes:



Project IAMP Preliminary Investigation
Project No. D8044
Carried out for Sunderland City Council

Plate

27

Photographs



TP20-2



TP20-3

Photographs



TP21-1



TP21-2

Notes:



Project IAMP Preliminary Investigation
Project No. D8044
Carried out for Sunderland City Council

Plate 29

Photographs



TP21-3

Notes:



Project IAMP Preliminary Investigation
Project No. D8044
Carried out for Sunderland City Council

Plate 30

Photographs



TP22-1



TP22-2

Notes:



Project IAMP Preliminary Investigation
Project No. D8044
Carried out for Sunderland City Council

Plate

31

Photographs



TP22-3

Photographs



TP24-1



TP24-2

Notes:



Project IAMP Preliminary Investigation
Project No. D8044
Carried out for Sunderland City Council

Plate 33

Photographs



TP24-3

Notes:



Project IAMP Preliminary Investigation
Project No. D8044
Carried out for Sunderland City Council

Plate 34

Photographs



TP25-1



TP25-2

Notes:



Project IAMP Preliminary Investigation
Project No. D8044
Carried out for Sunderland City Council

Plate 35

Photographs



TP25-3

Notes:



Project IAMP Preliminary Investigation
Project No. D8044
Carried out for Sunderland City Council

Plate 36

Photographs



TP30-1



TP30-2

Notes:



Project IAMP Preliminary Investigation
Project No. D8044
Carried out for Sunderland City Council

Plate 37

Photographs



TP30-3

Photographs



TP31-1



TP31-2

| | | | | |
|---|-----------------|--------------------------------|-------|----|
| Notes:  | Project | IAMP Preliminary Investigation | Plate | 39 |
| | Project No. | D8044 | | |
| | Carried out for | Sunderland City Council | | |

Photographs



TP31-3

Photographs



TP32-1



TP32-2

| | | | | |
|--|-----------------|--------------------------------|-------|----|
| <div>Notes:</div> <div></div> | Project | IAMP Preliminary Investigation | Plate | 41 |
| | Project No. | D8044 | | |
| | Carried out for | Sunderland City Council | | |

Photographs



TP32-3

Notes:



Project IAMP Preliminary Investigation
Project No. D8044
Carried out for Sunderland City Council

Plate

42

Photographs



TP33-1



TP33-2

Notes:



Project IAMP Preliminary Investigation
Project No. D8044
Carried out for Sunderland City Council

Plate

43

Photographs



TP33-3

Photographs



TP34-1



TP34-2

Photographs



TP34-3

Notes:



Project IAMP Preliminary Investigation
Project No. D8044
Carried out for Sunderland City Council

Plate 46

Photographs



TP35-1

Notes:



Project IAMP Preliminary Investigation
Project No. D8044
Carried out for Sunderland City Council

Plate

47

Photographs



TP35-2

Photographs



TP36-1



TP36-2

| | | | | |
|---|-----------------|--------------------------------|-------|----|
| Notes:  | Project | IAMP Preliminary Investigation | Plate | 49 |
| | Project No. | D8044 | | |
| | Carried out for | Sunderland City Council | | |

Photographs



TP36-3

Photographs



TP37-1



TP37-2

Photographs



TP37-3

Notes:



Project IAMP Preliminary Investigation
Project No. D8044
Carried out for Sunderland City Council

Plate 52

Photographs



TP38-1



TP38-2

Notes:



Project IAMP Preliminary Investigation
Project No. D8044
Carried out for Sunderland City Council

Plate 53

APPENDIX D

Insitu Testing



PointID

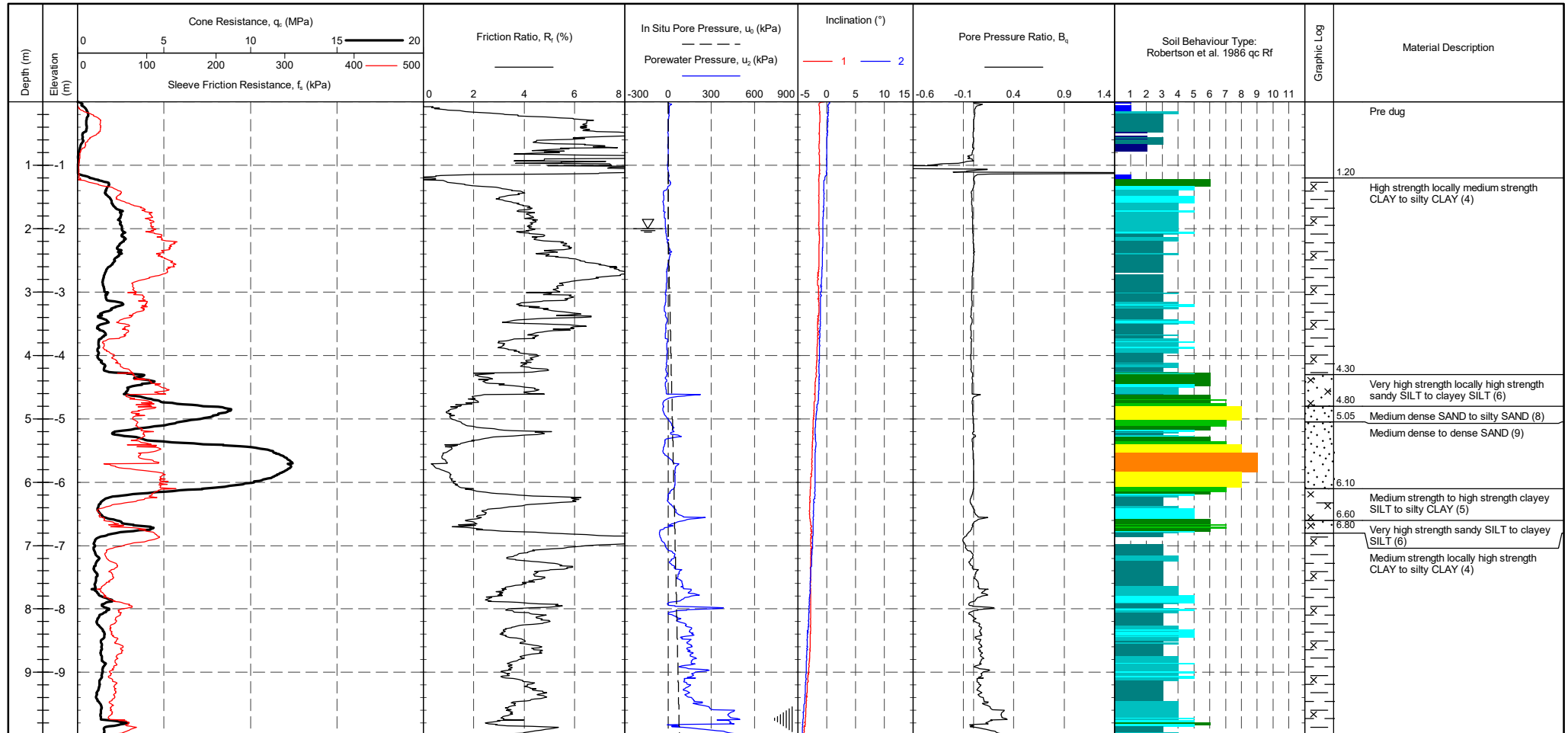
CPT 14

CLIENT : Dunelm Geotechnical
PROJECT : Sunderland
LOCATION : Sunderland
PROJECT No. : 1170315

EASTING :
NORTHING :
ELEVATION : 0.00 m
CHECKED BY : LD
TERMINATION REASON : Refusal

REMARK
Test refused on tip resistance.

SHEET : 1 OF 2
STATUS : Final
TEST DATE : 07/08/2017
PLOT DATE : 09/08/2017
METHOD : ISO 22476-1:2012



CONE ID : S15-CFIP.1488
CONE AREA : 15cm²
CONE AREA RATIO : 0.79
FILTER POSITION : u2
FILTER TYPE : HDPE
FRICTION REDUCER : None

TEST TYPE : TE2
APPLICATION CLASS : 2
RIG : CPT 007
OPERATOR : RS & PB
FILE NAME : 1170315-CPT 14
WEATHER : Sunny & Mild

CPTU ZERO VALUES

| Transducer | Pre | Post | Difference |
|-----------------|---------|---------|------------|
| Tip | 309 mV | 308 mV | -0.011 MPa |
| Sleeve | 277 mV | 271 mV | -0.004 kPa |
| Pore Pressure 2 | 242 mV | 271 mV | 0.008 kPa |
| X-Y Inclinator | 2403 mV | 2427 mV | |

METHOD: Robertson et al. 1986 qc Rf

| | | |
|-------------------------------------|-------------------------------|------------------------------|
| 1 - Sensitive fine grained material | 5 - Clayey silt to silty clay | 9 - Sand |
| 2 - Organic material | 6 - Sandy silt to clayey silt | 10 - Gravely sand to sand |
| 3 - Clay | 7 - Silty sand to sandy silt | 11 - Very stiff fine grained |
| 4 - Silty clay to clay | 8 - Sand to silty sand | 12 - Sand to clayey sand |

Groundwater Level

Dissipation Test