

APPENDIX 5.1 PUBLIC CONSULTATION

The following provides a summary of the 2021 public consultation that has been undertaken in relation to the proposed development. For full details, reference should be made to the Lichfields 2021 Statement of Community Involvement, which has been submitted separately to accompany the application.

Leaflet Drop

A leaflet drop was carried out on the 8 July 2021 to publicise the proposed development. Approximately 2,800 leaflets were distributed amongst businesses and households located within the defined consultation zone, illustrated, below. This is the same consultation zone as that used for the IAMP ONE Phase 2 engagement.

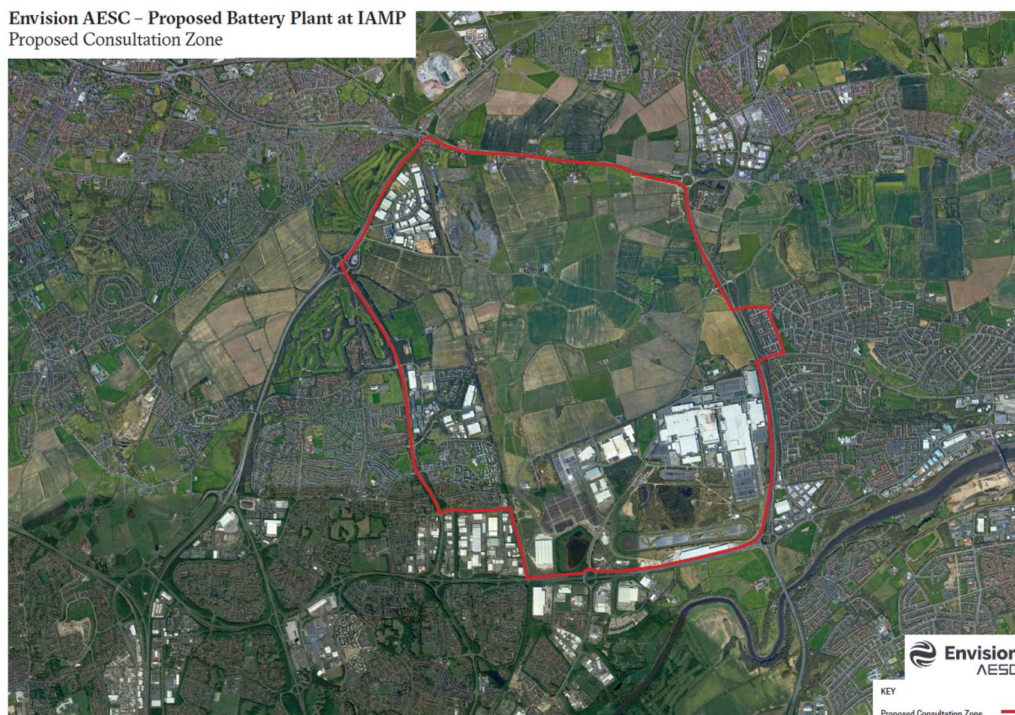


Figure 5.1 Consultation Zone

In addition to providing details of the proposed development, the leaflet also included a questionnaire for recipients to complete and return (via a free-post) address. Recipients of the engagement were advised to submit their questionnaire responses and any other comments by 19 July 2021, at which point the engagement exercised concluded. In total, 33 respondents submitted a questionnaire via free-post, of which 15 also included general comments.

An example of the leaflet is provided overleaf.

ENVISION AESC PLAN FOR DEVELOPMENT ON IAMP

PUBLIC CONSULTATION



Envision AESC is a world leading manufacturer of lithium-ion batteries for the automotive industry and has been producing highest quality batteries in Sunderland for the Nissan LEAF electric vehicle for 9 years.

The business is headquartered in Japan, but also has manufacturing sites in the United States and here in Sunderland where over 300 people are employed.

As the demand for electric vehicles is forecast to grow significantly over the coming years, supporting the transition to a net zero carbon future, additional capacity for battery manufacturing is needed. To meet this increased future demand, Envision AESC is proposing to invest in a new manufacturing facility that will be capable of producing batteries for more than 100,000 electric vehicles per year.

The business is seeking planning permission for this facility, and we would welcome your views on the proposal.



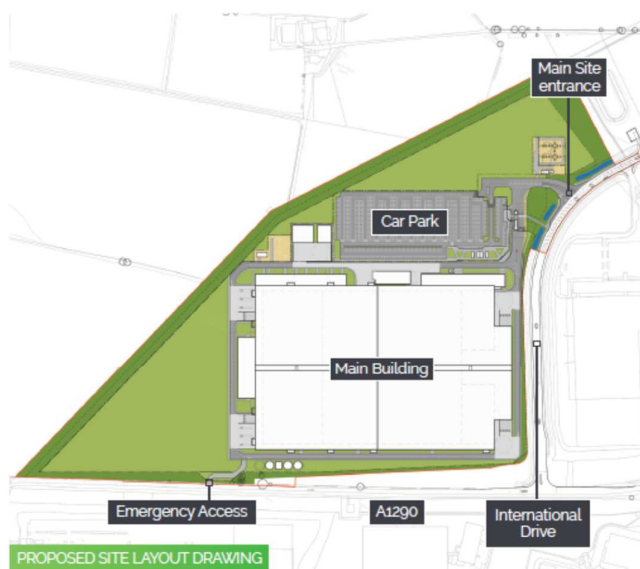
LOCATION – IAMP, SUNDERLAND

The site lies to the north west of Nissan and the current Envision AESC plant within IAMP at Washington, Sunderland. The site already has planning permission for automotive and advanced manufacturing uses and three bespoke manufacturing buildings have been completed.

The proposal will help ensure that Envision AESC, the IAMP and Sunderland are at the forefront of innovations in battery technology and will help Sunderland and the UK become one of the best international locations for automotive and advanced manufacturing.

THE PROPOSAL

The proposal is for Envision AESC UK Ltd., the applicant, to invest and build a new battery plant. The manufacturing plant would have a maximum annual production capacity of gGwh. The battery modules would be primarily used in electric vehicles.



The planning application will be accompanied by a range of documents including an Environmental Statement and Transport Assessment, as well as drawings of the site layout and the building itself.

PROJECT OVERVIEW

Envision AESC UK Ltd. is proposing to invest £450m in the facility, and the key headlines for the project are as follows:



Capacity to produce gGWh of batteries per year



Construction is planned to start in early 2022, with the first battery production in 2024 (subject to planning permission)



Once operational the site will employ over 1,000 people, of course drawing on the significant skills and experience of the existing workforce



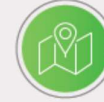
Facility to be powered by 100% renewable energy, including a proposal for on-site generation from solar panels



Confirms Sunderland as the heart of automotive electrification activities in the UK, building on both Nissan's and Envision AESC's initial investments in LEAF and the current battery plant



Provides opportunities for the materials used in battery production to be sourced from local suppliers, further enhancing the benefits for the North East and UK economies



The factory would be situated on the International Advanced Manufacturing Park (IAMP), in Sunderland – adjacent to the Nissan site, and less than 1 Km from the current Envision AESC battery plant

WE WANT YOUR VIEWS

We would like to hear your views on the proposal. Please complete the questionnaire below, cut along the dotted line and return the form by **Monday 19th July 2021** using the freepost address overleaf.

1 The proposed battery plant is welcomed as part of the continuing development of IAMP for advanced manufacturing and automotive uses. Do you:

☐ Strongly Agree ☐ Agree ☐ Neutral ☐ Disagree ☐ Strongly Disagree

2 The site is a suitable and sustainable location for this development. Do you:

☐ Strongly Agree ☐ Agree ☐ Neutral ☐ Disagree ☐ Strongly Disagree

3 The proposed battery plant will support the transition to electric cars and will help reduce greenhouse gas emissions. Do you:

☐ Strongly Agree ☐ Agree ☐ Neutral ☐ Disagree ☐ Strongly Disagree

4 The proposed battery plant will create / sustain a substantial number of local jobs in the area. Do you:

☐ Strongly Agree ☐ Agree ☐ Neutral ☐ Disagree ☐ Strongly Disagree

5 Any other comments:

Nathaniel Lichfield & Partners Limited ("Lichfields") is registered with the Information Commissioners Office (registration number Z0193122). Your responses will be analysed by Lichfields on behalf of our client: Envision AESC UK Ltd. It is not envisaged that any personal data will be supplied by virtue of completion of the survey, but in the event that any personal data is supplied, it will be disregarded and deleted without undue delay. Responses to this consultation may be made publicly available.

Business Reply Plus
Licence Number
RTZH-AJTC-TTBH

Lichfields
St. Nicholas Building
St. Nicholas Street
NEWCASTLE UPON TYNE
NE1 1RF



Feedback

In summary, a total of 79% (of 33 responses received) respondents either strongly agreed or agreed that the proposed battery plant is a welcome continuation of the IAMP development for advanced manufacturing and automotive uses. A total of 3% of respondents answered neutrally and 18% respondents either disagreed or strongly disagreed.

Of the 15 general comments provided, 6 were positive comments, 7 were negative and 2 provided neutral comments. Whilst the positive comments supported proposals and the investment in the economy, the concerns raised related to the principle of the development, the loss of green space, increased traffic on the A1290, increased noise and disturbance, the impact on biodiversity and the implications on climate change. A response to each of the concerns raised is provided within the Statement of Community Involvement.

Next Stage

The next stage of engagement comprises a statutory exercise undertaken by Sunderland City Council. This will commence upon validation of the planning application and the local community and other interested parties will have another opportunity to comment on the proposed development.