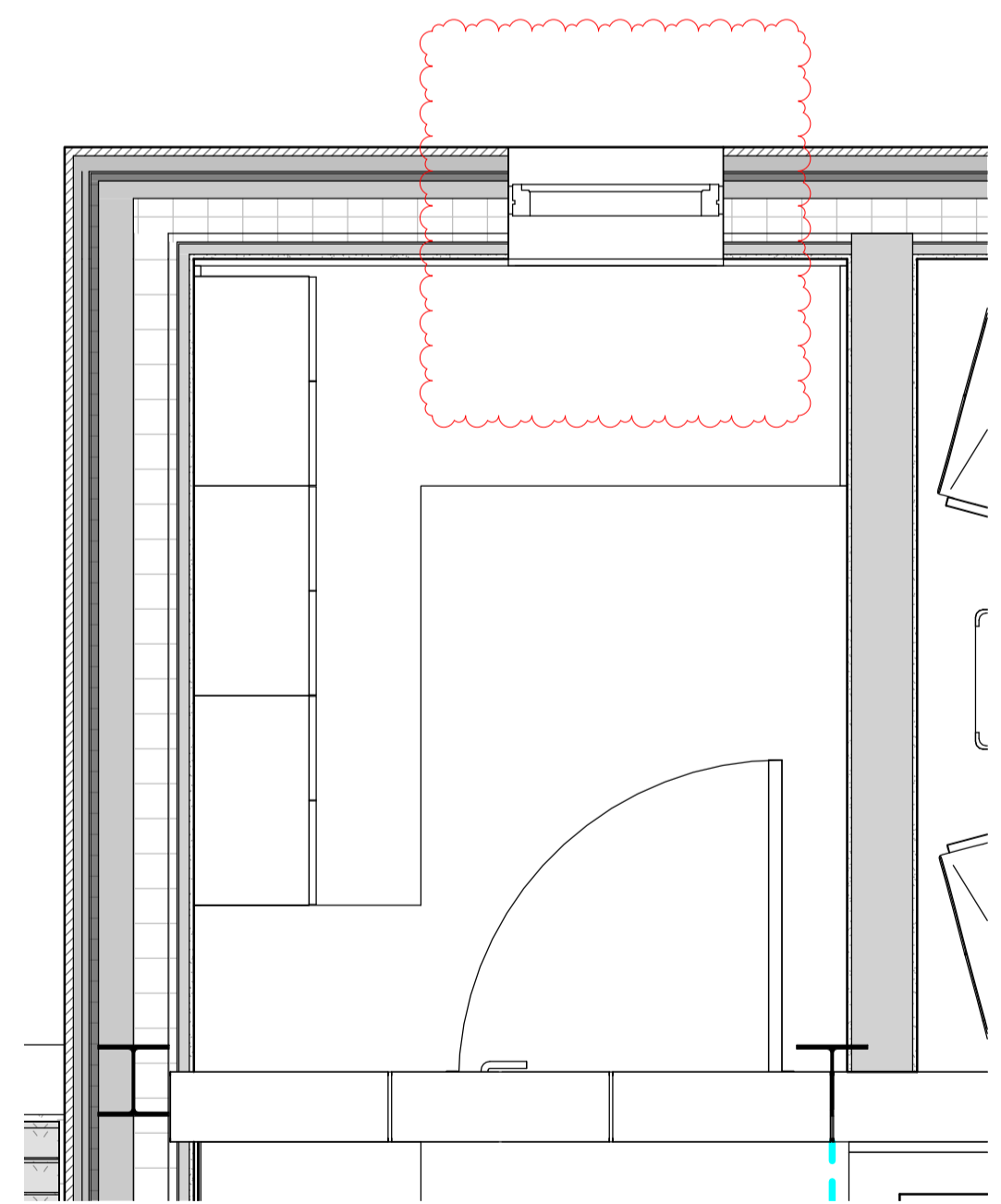
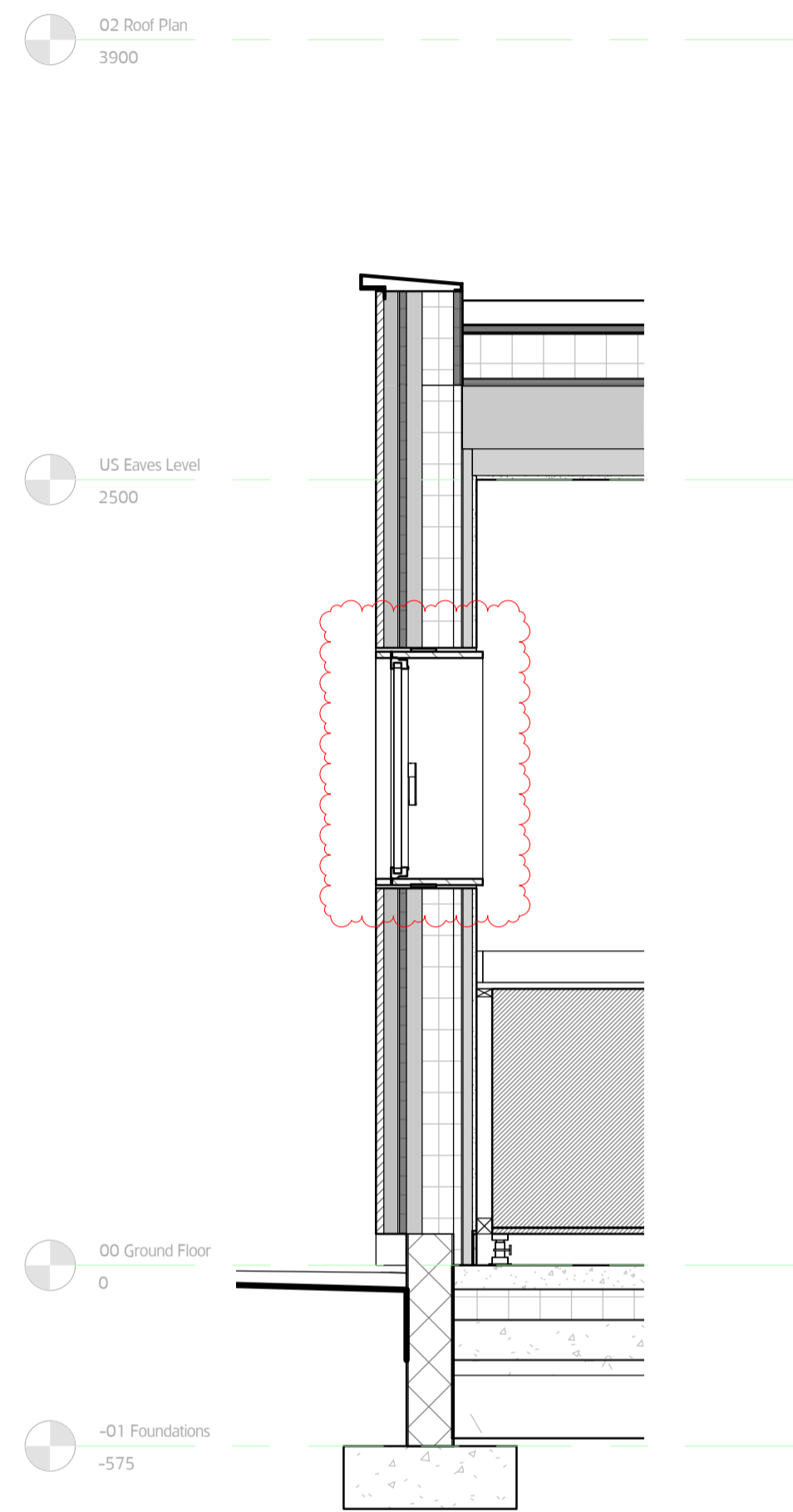


Velfac V200 Side Hung Casement window,
with flat 24mm profile
EXT: RAL9005 - Black
INT: RAL9010 Pure White
Dimensions 590X740mm

1 045 Elevation W0.17
1:50



3 356 Plan W0.17
1:20



2 351 Section W0.17
1:20

MOXON
LONDON
Great Western Studios, 65 Alfred Road, London W2 5EU
t 0207 034 0088 | f 0207 034 0099

SCOTLAND
Architects, Crathie, Aberdeenshire AB35 5UN
t 01339 742047 | f 0207 034 0099
m@moxonarchitects.com | www.moxonarchitects.com

Project		Quarry Studios, Crathie	
Drawing Title		Additional Cafe Window Details	
Status		Planning	
Drawn by	RB	Checked by	APM
Project No.	625	Scale	A2 (1000/800)
Project No.	625	Date	04/06/2016
Drawing No.	625_359	Size	A1 (841x594mm)
REV	DATE	DESCRIPTION	DRW TO
01	27.07.21	Cafe Window Planning	APM
		Rev	01