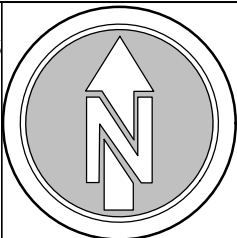
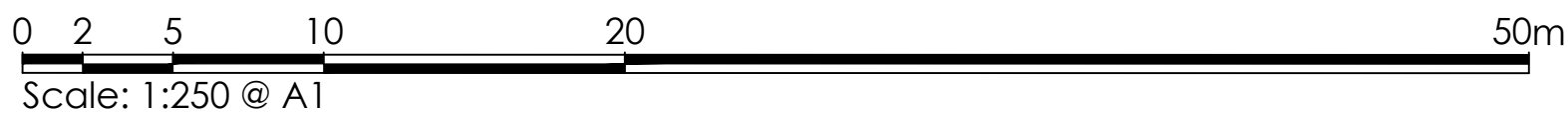


NOTE:  
SURROUNDING CONTEXTUAL BUILDINGS  
AND INFORMATION ARE  
BASED ON RECEIVED ORDINANCE  
SURVEY DRAWINGS AND ARE SHOWN  
FOR ILLUSTRATIVE PURPOSES ONLY.  
ASSUMED SITE BOUNDARY IS  
SUBJECT TO CONFIRMATION



Notes:

All proposed tree locations are subject to co-ordination with drainage layout and subject to modification depending on the location of underground services and utilities. Drainage engineer to co-ordinate services layout in conjunction with the landscape plan to avoid conflict as much as possible. Allowance to be made at tender stage for the possible requirement for root barriers once the drainage layout is confirmed, CA to be informed immediately once this is available.



GENERAL WATERING

All soft landscaping to be subject to a watering regime which is absolutely essential to ensure the continued success of the scheme, particularly during the initial 12 month establishment period. The watering frequency should be as necessary to ensure the continued thriving of all grass, hedges, trees and ornamental planting. During dry periods minimum weekly visits should be made to the site to ensure the soil has not dried out and to action watering if necessary. The soil should be checked for dryness using either a soil moisture sensor or by inserting a spade into the ground to a depth of 300mm to observe the appearance of the soil. If the soil is moist there is no need to water but if it is bone dry then watering procedure should be carried out immediately. Water supply should be from potable mains water or an approved alternative. The full depth of topsoil should be wet without loosening or damaging plants. Any compacted soil should be broken up sufficiently to allow water to reach the rootzone.

WATERING TREES

Trees to be watered in accordance with BS 8545-2014 Tree - From Nursery to Independence. Trees should be watered via the installed irrigation / aeration pipes around the base of the trees stem in accordance with the manufacturer's instructions to ensure the water reaches the roots of the tree. Below is a suggested watering regime but this should be used as a guide only and may require modification in times of drought or flood, dependant on the ground conditions at the time, which should be monitored as above:

- March - October: 20 litres to be poured into irrigation pipe twice a week (40 litres in total)

SOFT LANDSCAPE KEY:

- Existing trees to be removed**  
In order to facilitate the proposed development.
- Existing trees to be retained**  
Retained and protected during construction and landscaping works in accordance with BS5837:2012 guidance.
- Proposed Tree in soft landscape**  
Refer to planting schedule for species & specification
- Proposed specimen shrub planting**  
Refer to planting schedule for species & specification
- Proposed ornamental shrub planting**  
Refer to planting schedule for species & specification
- Proposed formal hedge planting**  
Refer to plant schedule for species & specification  
To be maintained at 1.2m/1.5m high
- Proposed grass area**  
To be cultivated amenity turf
- Proposed species rich wildflower**  
Germinial Seeds Wetland and Pond areas sown at 5g/m2. Refer to specification for sowing and maintenance requirements.  
NB - To be sown into cultivated **subsoil** not topsoil to lower fertility. Refer to specification for sowing and maintenance requirements.
- Proposed gravel surface finish**  
To be laid over permeable geotextile membrane
- Proposed ornamental bark mulch surface finish**

SOFT LANDSCAPE SPECIFICATION NOTES

NOTE: All soft landscape works to be carried out in accordance with BS4428:1989.

SUBSOIL

Subsoil should be broken up to relieve compaction and aid drainage prior to topsoiling to the following depths:  
- For light and non cohesive subsoils: 300mm  
- For stiff clay and cohesive subsoils: 450mm  
Immediately before spreading Topsoil, remove stones larger than 50mm.

TOPSOIL

Existing site won topsoil to be reused for soft landscape areas if sufficient quantities are available and the topsoil meets the criteria for multipurpose topsoil as defined in table 1 of BS3882:2015 specification for Topsoil.

If imported topsoil is required it is to be supplied and spread by the main contractor to the approval of the Landscape contractor, in accordance with BS 3882:2015. To be a natural sandy loam, of medium texture, with a pH between 5.5 and 7.8, not more than slightly stony and free of pernicious weeds. Subsoil to be well broken up prior to top-soiling to relieve compaction. Topsoil depths should be:  
Areas for Ornamental Shrub Planting: minimum 400mm  
Areas for cultivated turf: minimum 150mm

**CULTIVATION**  
Weeds to be prevented from seeding or becoming established by applying a suitable herbicide and allowing the correct time to elapse, as directed by the manufacturer. Compacted soil to be broken up to a depth of 100mm, with any stones, grass tufts or rubbish larger than 50mm in any direction to be removed, leaving a regular and even surface. Suitable slow release fertiliser to be supplied and spread @ 50g/m2 to all planted areas.

**CLIMATIC CONDITIONS**  
Topsoiling should be carried out in the driest conditions possible – cultivation to be carried out when the soil is moist, friable and not waterlogged or frozen. Topsoil should not be handled during or after heavy rainfall or when it is wetter than the plastic limit as defined by BS 3882. Planting should not take place in waterlogged conditions or when the ground is frozen.

SOIL AMELIORANT

Peat-free compost to be spread over ornamental shrub beds @ minimum 50mm depth prior to cultivation.

TREES

All trees within shrub beds to be planted in separate pits in accordance with tree planting detail. All plant material to comply with BS 3934 Part 1:1992, be obtained from a nursery certified by the HTA and transported to site in accordance with the HTA Plant Handling Guide: 1996. All trees to be planted to the original root collar and secured in place with underground guying system in accordance with tree planting detail. All trees to be fitted with aeration and irrigation system in accordance with tree planting detail.

06.05.2021:16:30:00

If the trees are to be planted outside of the planting season (late October - Late March) then containerised stock to be used in lieu of root ball to the same specification. Allowance to be made for this at tender stage if required once construction timetable is known and CA informed immediately.

EXISTING SHRUBS

Existing shrubs to be trimmed back at appropriate time of year for the species and maintained in conjunction with the proposed planting. All pruning works should be carried out by an approved member of the Arboricultural Association or other approved specialist using approved methods for that species and should result in a balanced form on all sides.

PROPOSED ORNAMENTAL SHRUB PLANTING

All shrubs to be positioned as shown on the drawing and to the density and specification noted in the plant schedule. Planting holes to be 150mm wider than the root spread, have the base ground thoroughly broken up before planting and backfilled with peat free compost. All shrubs to be equally spaced throughout the planting areas to the specified density in a staggered arrangement unless otherwise noted in the planting schedule.

GRASSED AREAS

Seeded areas should be sown in accordance with BS 3969:1998; Recommendations for Turf for general purposes and BS 4428-1989 General Landscaping Operations.  
Height of initial growth: 100mm  
Height of first cut: 50mm  
Height of growth: The height of growth must not exceed 100mm at any time.  
Frequency: Cut as and when necessary to a height of 25mm, using a rotary mower and remove all arisings.  
Timing: When grass reaches scheduled height of maximum growth and is reasonably dry.  
Application: At the time of each cut, trim all grass edges round the base of trees, manholes etc and remove arisings. Sweep all adjoining hard areas clear of cuttings and remove.  
Weeding: Keep the sward substantially free of broad leaved weeds by applying a suitable selective herbicide.  
Fertilizer: March application: 15:10:10 Spring turf fertilizer at 35g/m2.  
September application: 5:10:10 Autumn turf fertilizer at 50g/m2.

WILDFLOWER SEEDING

Wildflower mixes to be sown directly into cultivated **low fertility subsoil** in accordance with manufacturers recommendations at rate of 5g/m2 for wetland mix (see key for species mixture). Preparation: Cultivate subsoil, apply a suitable herbicide and allow the correct time to elapse, as directed by the manufacturer, and seed the bed. No fertiliser, compost or mulch are to be applied to the wildflower bed.  
Cutting first season: Time of first cut - if sown in Autumn cut in March/April, if sown in Spring cut in August - October after flowering. Height of first cut - 70mm. If sown in Autumn it should also be cut in September/October after flowering.  
Cutting second season: March/April - cut to 50-70mm then September/October - cut to 50mm after flowering. To be cut twice a year from then on as per above.  
\*NOTE - At time of each cut all arisings to be removed from the bed to maintain reduced soil productivity.

SUBSTITUTIONS:

Upon submission of evidence that certain materials, including plant materials, are not available at the time of the landscape contract, the Landscape Contractor may be permitted to substitute other materials and plants in exceptional circumstances during the contract with an agreed adjustment of prices. All substitutions shall be of nearest equivalent species and variety to the original specified but shall be subject to approval by the Landscape Architect before any change is made.

TIMES OF YEAR FOR PLANTING:

Landscape works to be carried out during the final possible planting periods prior to practical completion of the building and associated engineering works / car park areas in accordance with the following:  
- Native and ornamental trees: During dormant winter period - Late October to late March (only if planted in the planting season otherwise containerised stock to be used).  
- Bare root native transplants: During dormant winter period - Late October to April.  
- Container grown ornamental and specimen shrubs: At any time if ground and weather conditions are favourable.

MULCH

75mm depth of 8-35mm ornamental bark mulch (peat-free) to be supplied and spread to all planting areas. Finished mulch level to be installed and maintained at 25mm below any adjacent kerbs or paving surfaces.

MAINTENANCE

All planting areas to be maintained to a high standard by the contractor for **12 months** after practical completion, to ensure the landscape scheme is successful, and discourage decline of the area.  
Minimum frequency of maintenance visits:  
December / January / February & March - 1no. visit each month  
April to November - 2No. visits each month.

Generally, during the first 12months:

- All planting beds to be re-firmed and kept weed free through hand weeding and application of an approved herbicide where appropriate.
- All litter to be picked and removed from landscape areas.
- Mulch to be topped up as required to maintain the specified thickness.
- The condition of all trees is to be regularly checked, with ties and stakes adjusted or replaced as necessary.
- Shrubs to be pruned at appropriate times of year for each species to promote healthy growth and desirable ornamental features.
- Grass lawn areas to be cut and maintained in accordance with specification note above.
- All arisings to be removed from site.
- Any defects or plant losses occurring during the first 12 months defects period to be replaced at the contractors expense.

Following the initial 12 month establishment period the ongoing landscape management will be the responsibility of an commercial landscape maintenance contractor under a landscape maintenance contract

02.07.2021:15:00:00 Updated to remove red line boundary  
06.05.2021:16:30:00 Updated to Architects latest site plan  
17.12.2020:18:00:00 Updated to Architects latest site plan  
10.12.2020:14:00:00 Updated to Architects latest site plan and Engineers/Drainage plan

Revisions Description Drawn Check

Project Title	PROPOSED ALDI FOODSTORE	Drawing Title	LANDSCAPE PLAN
Job-Dwg No	2909-VL L01	Rev	D
Client	ALDI STORES LIMITED - CHELMSFORD		
Status	PLANNING		
Scale	1:250	Drawing Size	A1
Drawn By	FW	Checked By	AS
		Date	09/2020

LANDSCAPE DESIGNERS

4 ST JOHNS NORTH, WAKEFIELD, WF1 3QA. TEL 01924 332056  
web:www.vectordc.com

