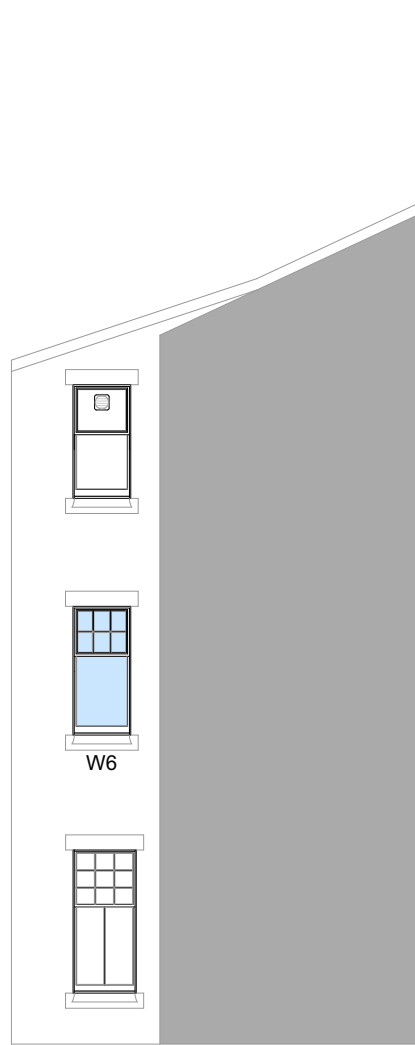




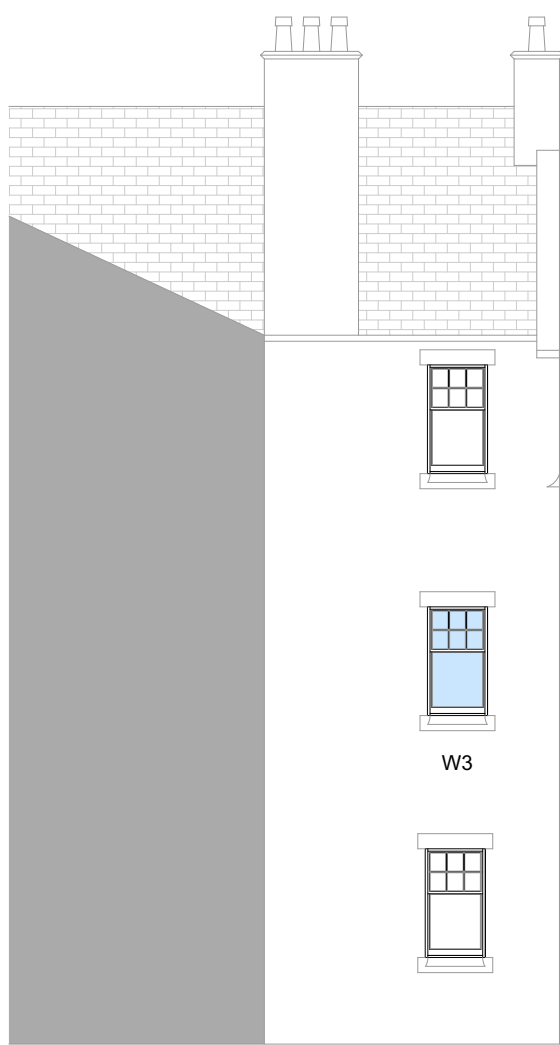
Elevation A
1:100



Elevation B
1:100

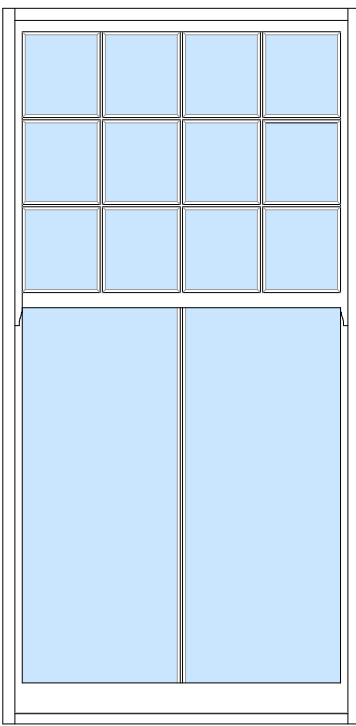


Elevation C
1:100

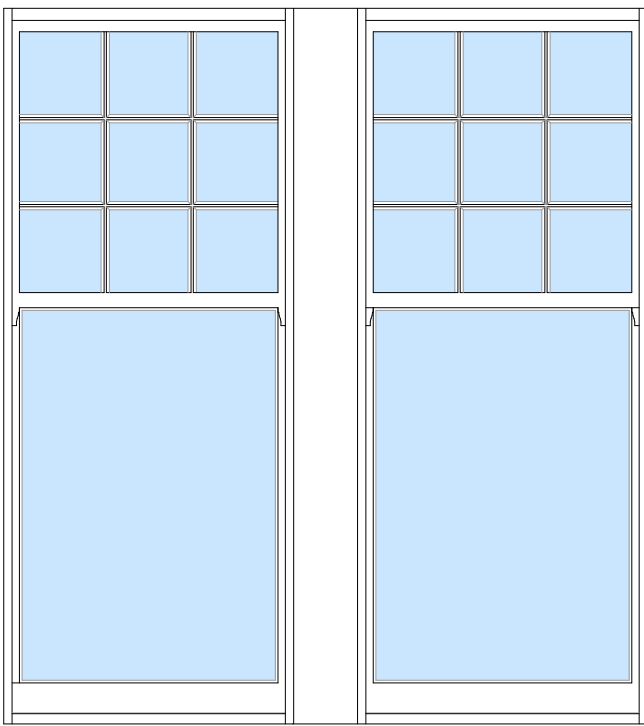


Elevation D
1:100

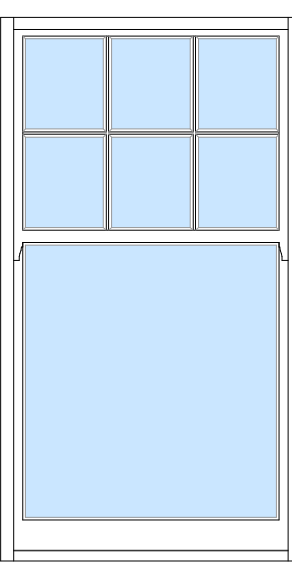
W1



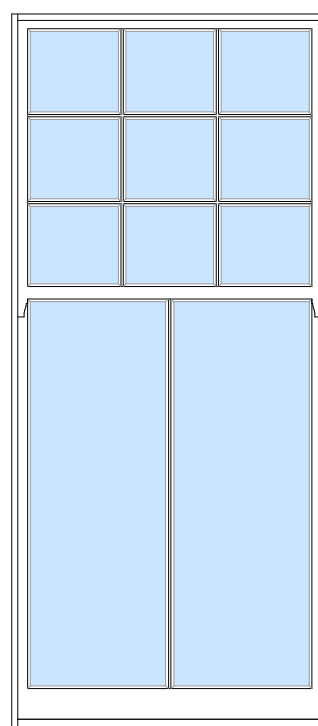
W2



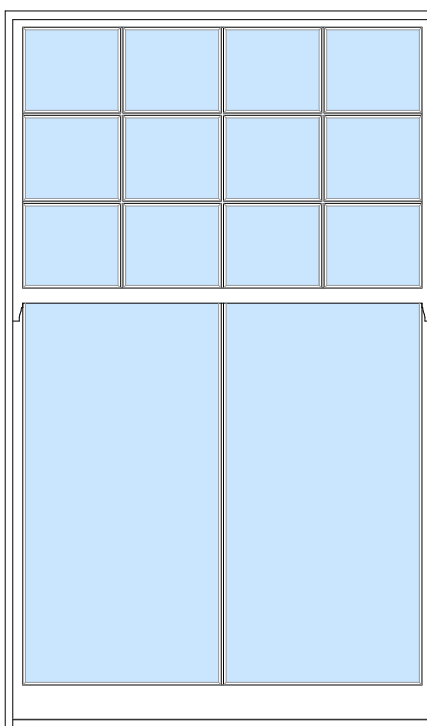
W3



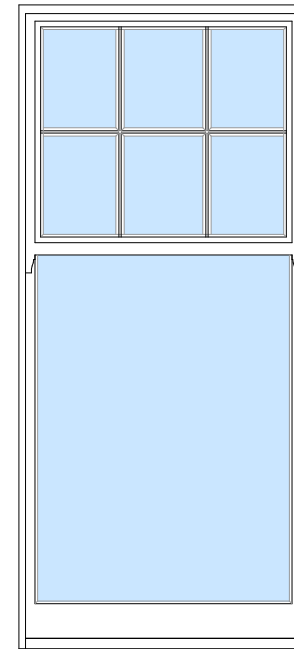
W4



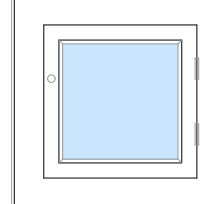
W5



W6



W7

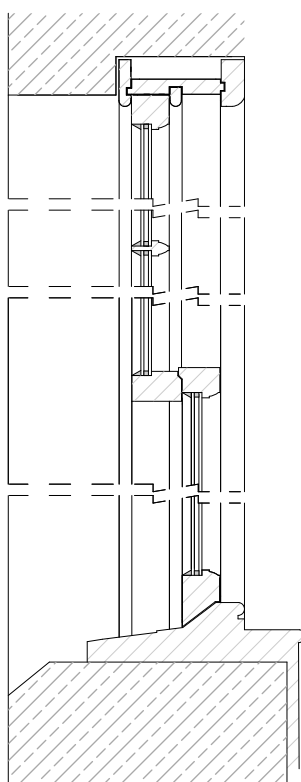


W8

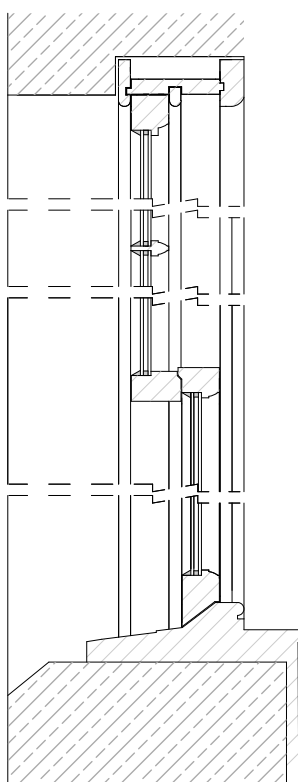


Proposed Window Elevations
1:20

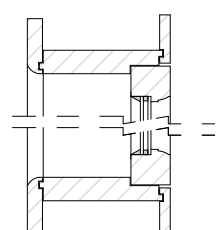
W 1, 2, 3, 4, 5



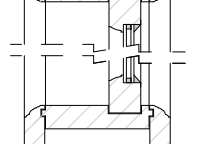
W 6



W 7

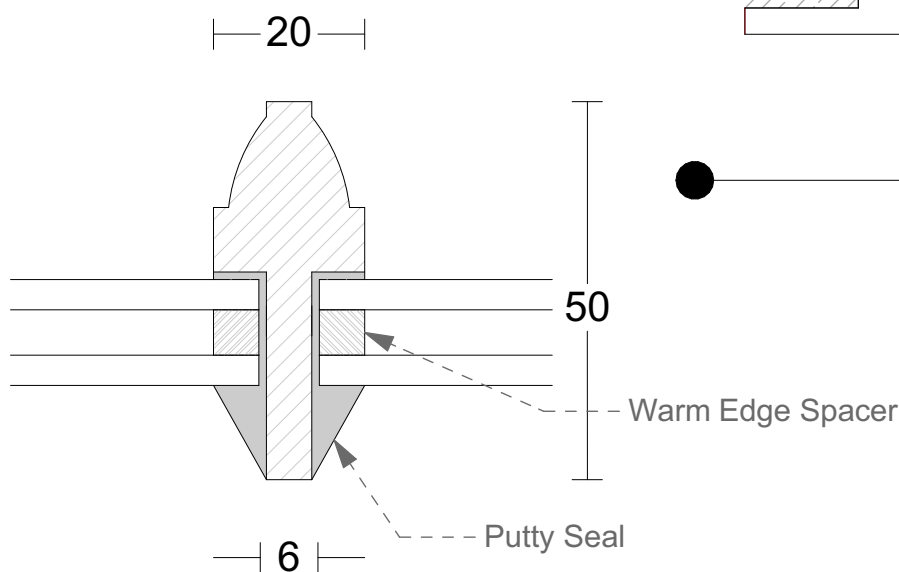


W 8



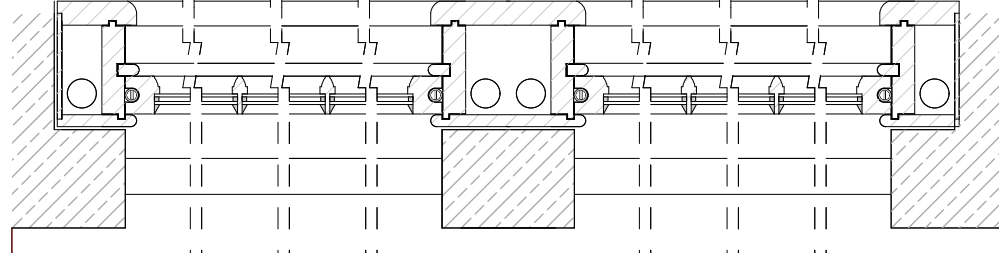
Proposed Vertical Window Sections
1:10

W 1, 2, 3, 4, 5, 6

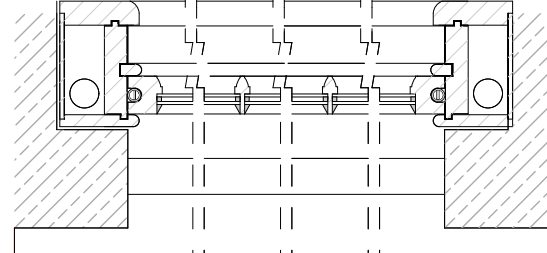


Astragal Detail
1:1

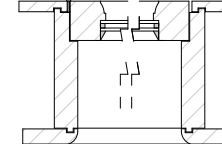
W 2



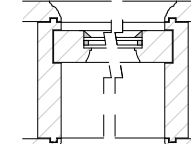
W 1, 3, 4, 5, 6



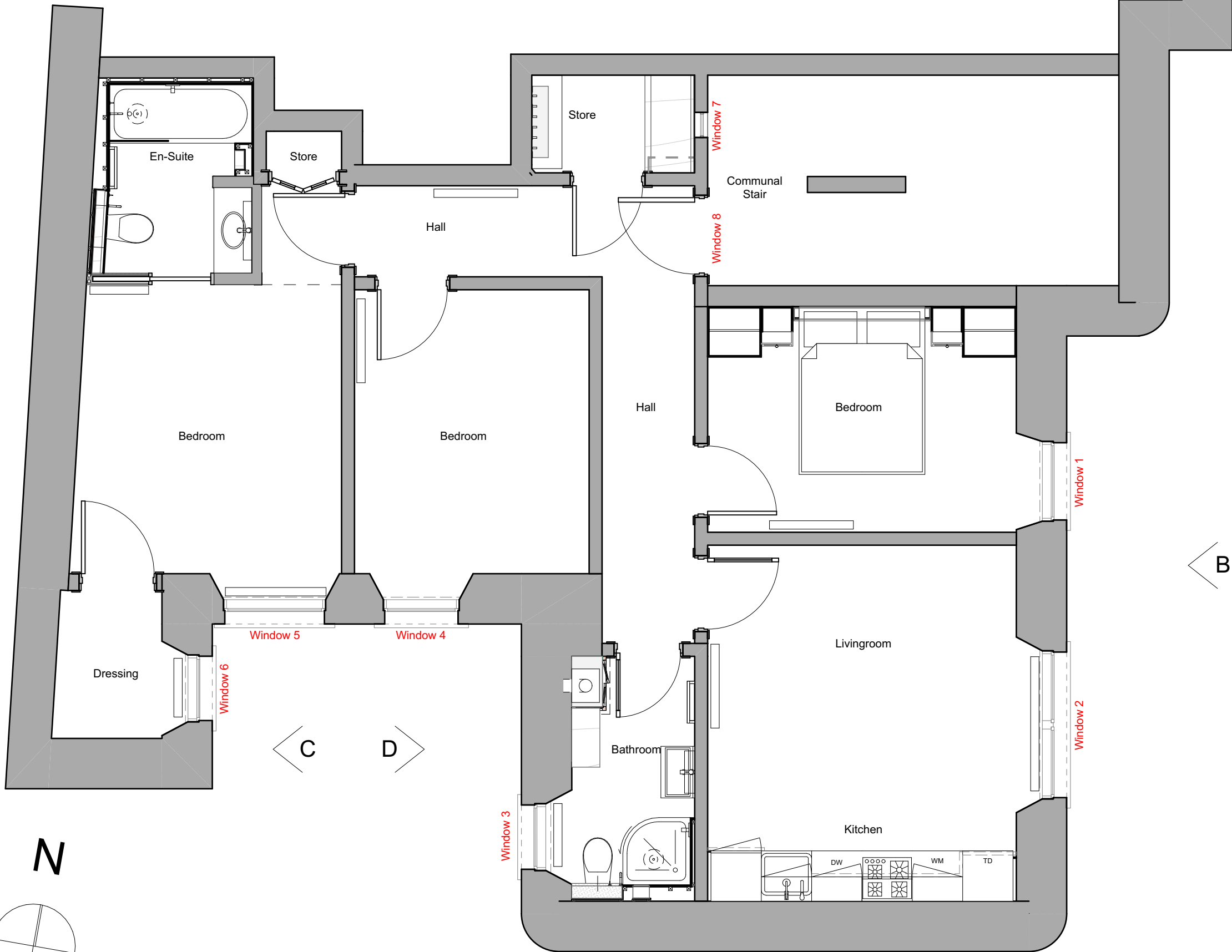
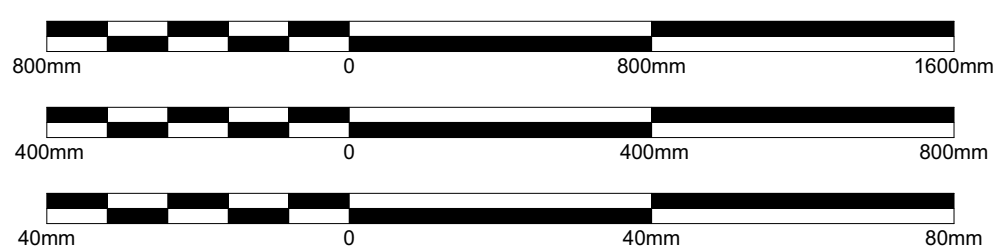
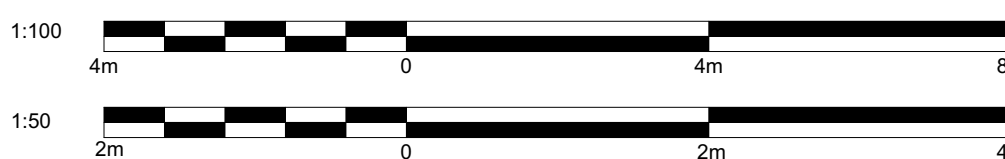
W 7



W 8



Proposed Horizontal Window Sections
1:10



First Floor
1:50

COPYRIGHT OF MUIR WALKER & PRIDE.
VERIFY ALL DIMENSIONS AND LEVELS.

DRAWING PREPARED FOR OBTAINING CONSENTS
ONLY; NOT TO BE USED FOR CONSTRUCTION
PURPOSES.

Specification:

Construction: Windows generally are to be traditional sash and case comprising sliding upper and lower sashes in varying No. panes per sash divided by vertical and horizontal solid timber astragal (see window elevations). Window No.6: extract fan to be removed and replaced by 6 panes on upper sash constructed with astragals as per detail. Casement window to the storage room are to comprise a side hung inward opening casement in one pane fire resistant obscured glazing rated to 60 minutes. Entrance door transom window to comprise of fixed casement in single pane fire resistant obscured glazing rated to 60 minutes.

Timber: All timber used in the manufacture or construction of windows shall be high quality European softwood obtained from a reputable sustainable source, complying with BS EN 942 and BS1186 Parts 2 and 3. All new sills shall be high quality European hardwood. Proof of such may be required from your manufacturer/supplier. Astragals are to be 20mm wide solid timber type. Sash and case window cases are to be 166mm deep overall. Window sashes are to be 50mm thick.

Glazing: Sash and case windows to be improved with double glazed units outer pane of 4mm thick clear float glass, 6mm thick cavity with white warm edge spacer bar and inner pane of 4mm thick clear float glass with " Low E" coating. Windows 7+8 require glazing with 1-hour fire rating as face into communal stairwell.

Paint: Windows No.1-7 sashes, casements and frames to be finished in white gloss (Closest RAL 9010) paint on exterior and interior as per existing. Transom window No.8 to be painted Glossy grey (closest RAL 7015).

Draught-proofing: Any new windows should be fitted with a proprietary draught proofing system.

Ventilators: Trickle vents to be concealed within the frame head, eliminating the need for an unsightly and vulnerable external hood. All to comply with current UK building regulations.

Manufacture: Any new window (or part of a window) must be manufactured by a recognised joinery company experienced in producing traditional sash and case windows. A high level of quality of manufacturing will be expected and a sample window and/or glazing unit may be requested. Contractor to site size all window and door openings prior to fabrication.

Installation: Windows shall be installed by a suitable contractor experienced with such works in traditional buildings.

Ironmongery to sash and case windows: New lead/steel weights, nylon sash cords and steel knot holders. Draughtstrip to meeting rail of sashes and bottom rail of lower sash, offset leg carrier with weather pile with fin to vertical edges of sashes and top of upper sash. Low-visibility white vent and grille to head of the window (1no. per window). Concealed white draught cover (2no. per window) to the rear face of the inner sash pulleys.

REVISION		DATE
CLIENT	Ms Hala Zia	
PROJECT	Proposed Replacement Windows 18 Argyle Street St Andrews Fife KY16 9BU	
DRAWING	Proposed Replacement Windows	
<div><div><div>MWP</div><div>HH</div></div><div>MERCAT HOUSE 1 CHURCH STREET ST ANDREWS SCOTLAND, UK KY16 9NW 01334 472244 www.mwparchitects.co.uk mail@mwparchitects.co.uk</div></div>		
SCALE	As Shown @A1	JOB No. 3951
DATE	06.07.21	NUMBER 02
DRAWN	LJC	