

<u>Rev</u>	<u>Date</u>	<u>By</u>	<u>Description</u>
P01	30/09/19	BM	Layout Review
P02	07/10/19	BM	Tender Issue
P03	07/11/19	BM	Amended to BC comment
P04	28/01/20	BM	A.G.01 & door references
P05	11/12/20	BM	Materials amended
P06	22/02/21	BM	Preliminary issue
P07	12/07/21	SK	Drawing amended
P08	16/07/21	BM	Construction Issue
P09	27/07/21	BM	Beam and Block and SFS waterproofing shown



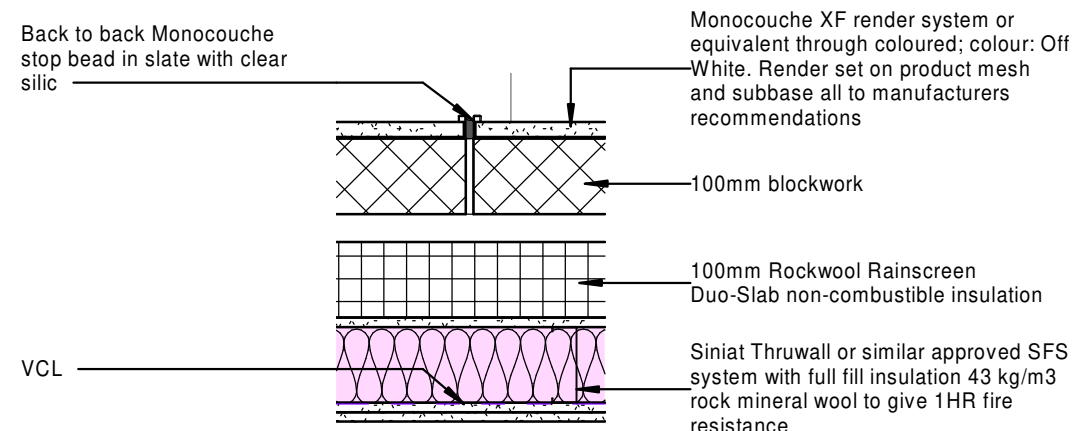
A.GA South Elevation

1 : 100



A.GA North Elevation

1 : 100



Typical Back to Back Stop Bead Detail.

1:10

- KEY

1. Monocouche XF Render or equiv. through coloured in Off White
2. Ibstock Ivanhoe Cream set in Tarmac Natural Y111 recessed mortar joints
3. Camtech Pinot Noir Black brick set in Tarmac Y14 recessed mortar joints
4. Catnic Tata steel standing seam SSR2 wall cladding. PPC RAL 7016
5. Sarna metal coping edging PPC RAL7016
6. Recessed Band to be Camtech Pinot Noir Black brick set in Tarmac Y14 recessed mortar joints
7. Seamless aluminium downpipes. PPC RAL 7016
8. Openable window to apartment. (For sizes please refer to window schedule). PPC RAL 7016
9. Render day lines
10. Tobemore paving, type refer to hardlandscaping plan
11. Timber clad bike shelter with green roof
12. Camtech Pinot Noir Black brick set in Tarmac Y14 recessed mortar joints to form walkway facing
13. Steel balustrade at 1100mm. To be painted anthracite grey
14. Taper Loc glass balustrade to balconies
15. Fencing to determine property boundaries
16. Balconies to have non-slip composite decking and press aluminium flashing to edge
17. Aluminium sliding doors. PPC RA 7016
18. Stairs to raised terraces
19. Obscured bathroom windows
20. Lift shaft overrun
21. Access ladder
22. AOV

Movement joint

RIW LAC paint to protect
SFS and beam and block
against water egress



Feel at home

SGP

Architects + Masterplanners

Waterfront House
2a Smith Way
Grove Park
Enderby
Leicester LE19 1SX

t: +44 (0)116 247 0557

www.stephengeorge.co.uk

Proposed Residential Development
32 Wilford Lane, West Bridgford
Nottingham NG2 7RL

Drawing Name:
A.GA - North & South
Elevations

Drawing Stage: Construction

Suitability: S3

SGP File Ref: 16-173 Building.rvt

16-173 19/06/19 BM IY As@A1 P09

SGP Project No. _____ Date: _____ Drawn: _____ Team: _____ Indication: _____ Rev: _____
Drawing Number: _____

16-173 - SGP - B1 - ZZ - DR - A - 2100