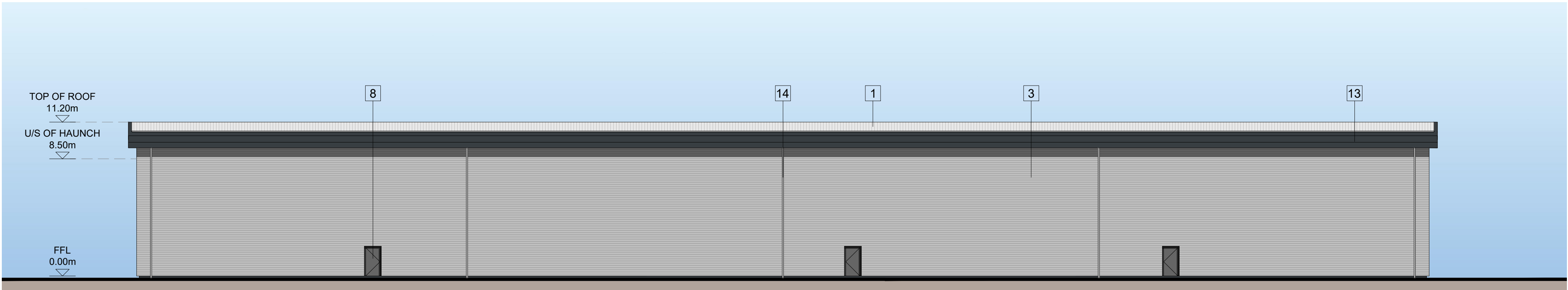
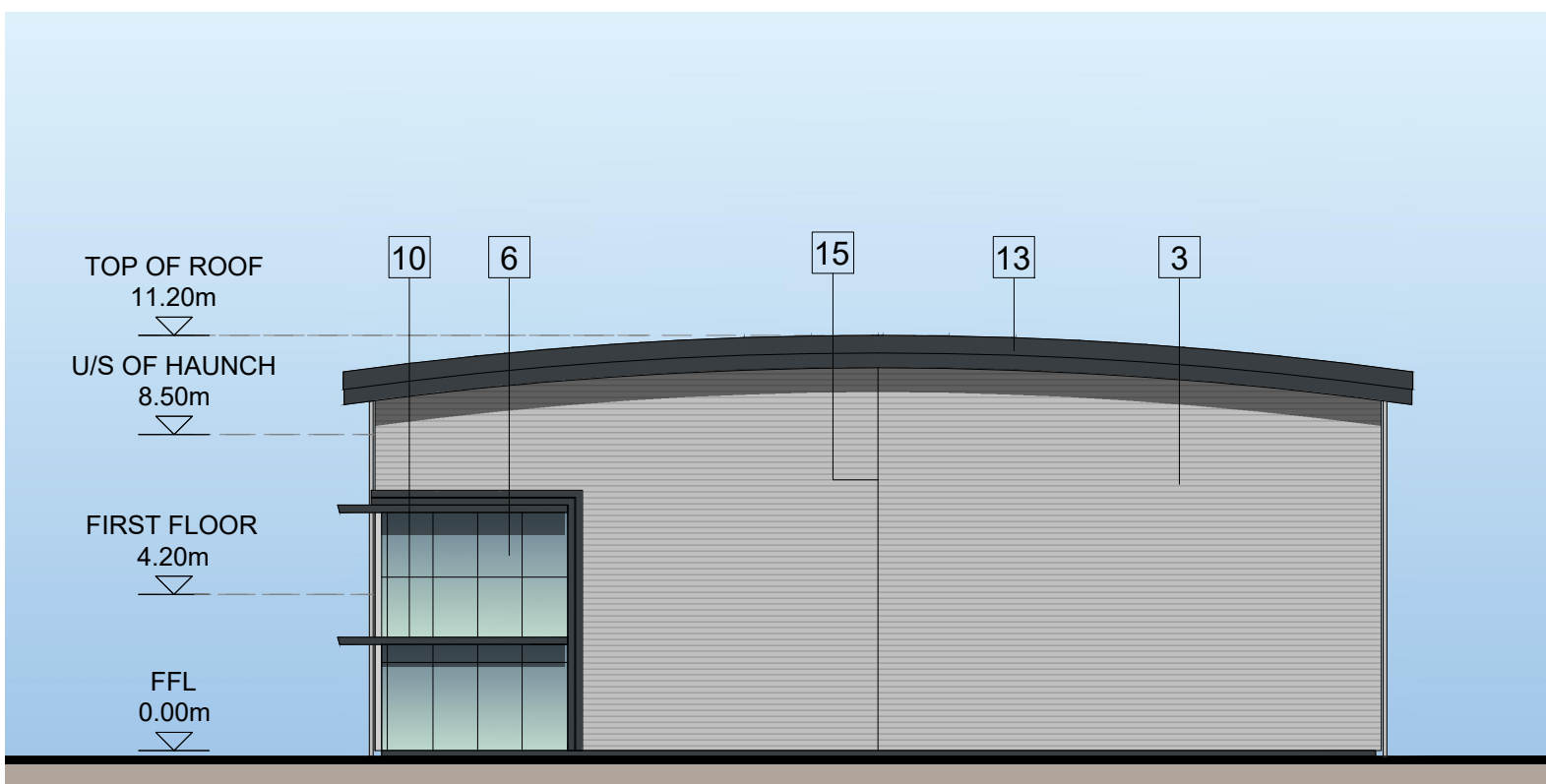


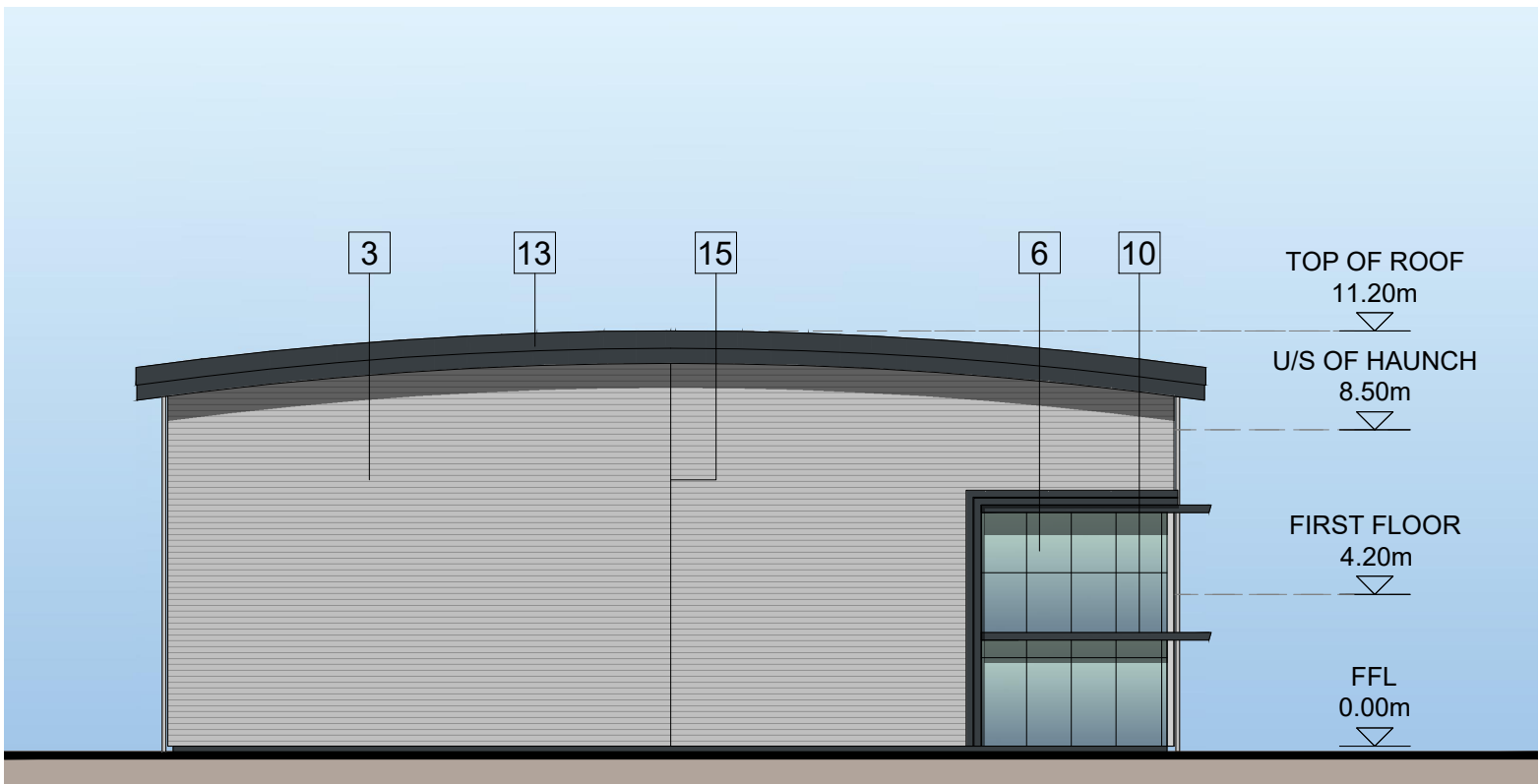
NORTH WESTERN ELEVATION



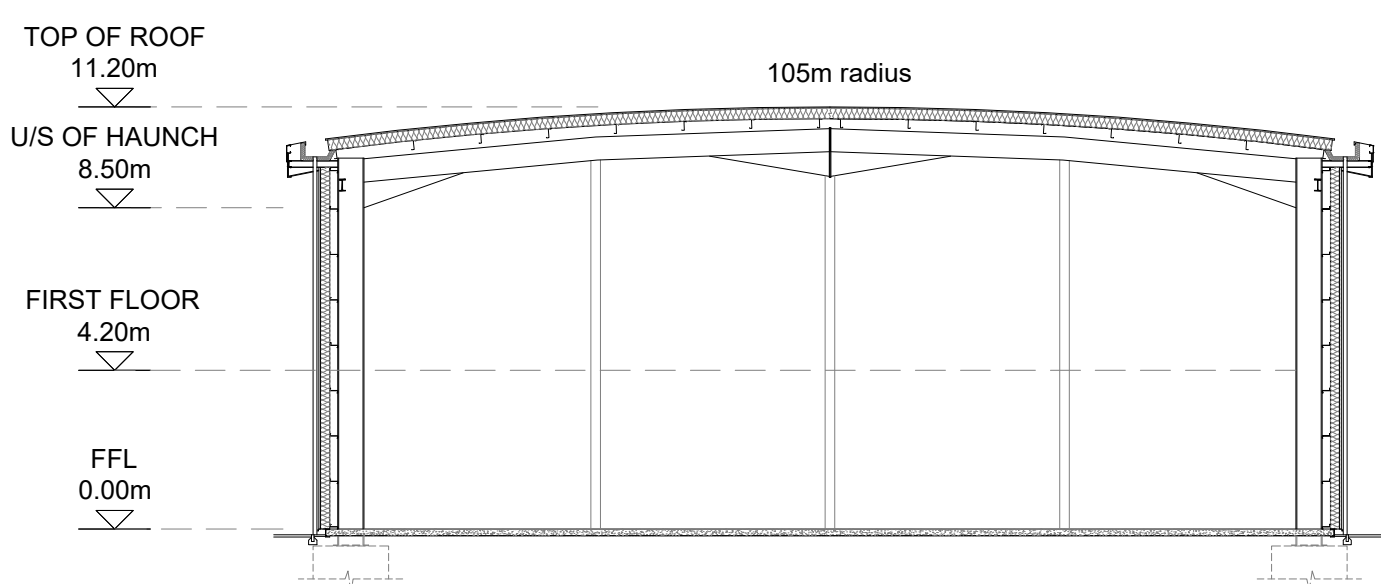
SOUTH EASTERN ELEVATION



SOUTH WESTERN ELEVATION

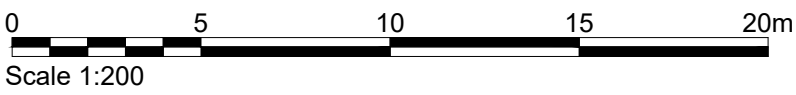


NORTH EASTERN ELEVATION



TYPICAL CROSS SECTION

- MATERIALS KEY
- 1 PROFILED ROOF CLADDING (GOOSEWING GREY RAL 7038)
 - 2 BRICKWORK
 - 3 HORIZONTAL ARC PROFILE CLADDING (METALLIC SILVER RAL 9006)
 - 4 MICRO-RIB CLADDING (WHITE RAL 9010)
 - 5 ALUMINIUM FRAMED WINDOWS (ANTHRACITE RAL 7016)
 - 6 ALUMINIUM FRAMED DOUBLE ENTRANCE DOORS AND FULL HEIGHT GLAZING (ANTHRACITE RAL 7016)
 - 7 LOADING BAY DOORS (ANTHRACITE RAL 7016)
 - 8 STEEL PERSONNEL DOORS (ANTHRACITE RAL 7016)
 - 9 STEEL BOLLARD
 - 10 MAIN ENTRANCE BRISE-SOLEIL
 - 11 SIGNAGE ZONE, INDICATIVE
 - 12 ALUMINIUM UNIT NUMERAL
 - 13 FLASHING (ANTHRACITE RAL 7016)
 - 14 RAINWATER PIPE (METALLIC SILVER RAL 9006)
 - 15 FIN FLASHING



Client: XLB PROPERTY & PATRON HOOK LTD

Project: BARTLEY WOOD BUSINESS PARK, HOOK

Drawing Title: UNITS 2-4 PROPOSED ELEVATIONS & SECTIONS

Scale @ A1: 1:200

Checked by: ME

Date: MAY 21

Job No: 11248

Stage: PL

Drawing No: 131

Rev: A

Issue Status: Construction Information Tender

Architecture Planning Master Planning Urban Design Interiors Landscape

Offices: Working London Milton Keynes Warsaw

PRC Architecture & Planning