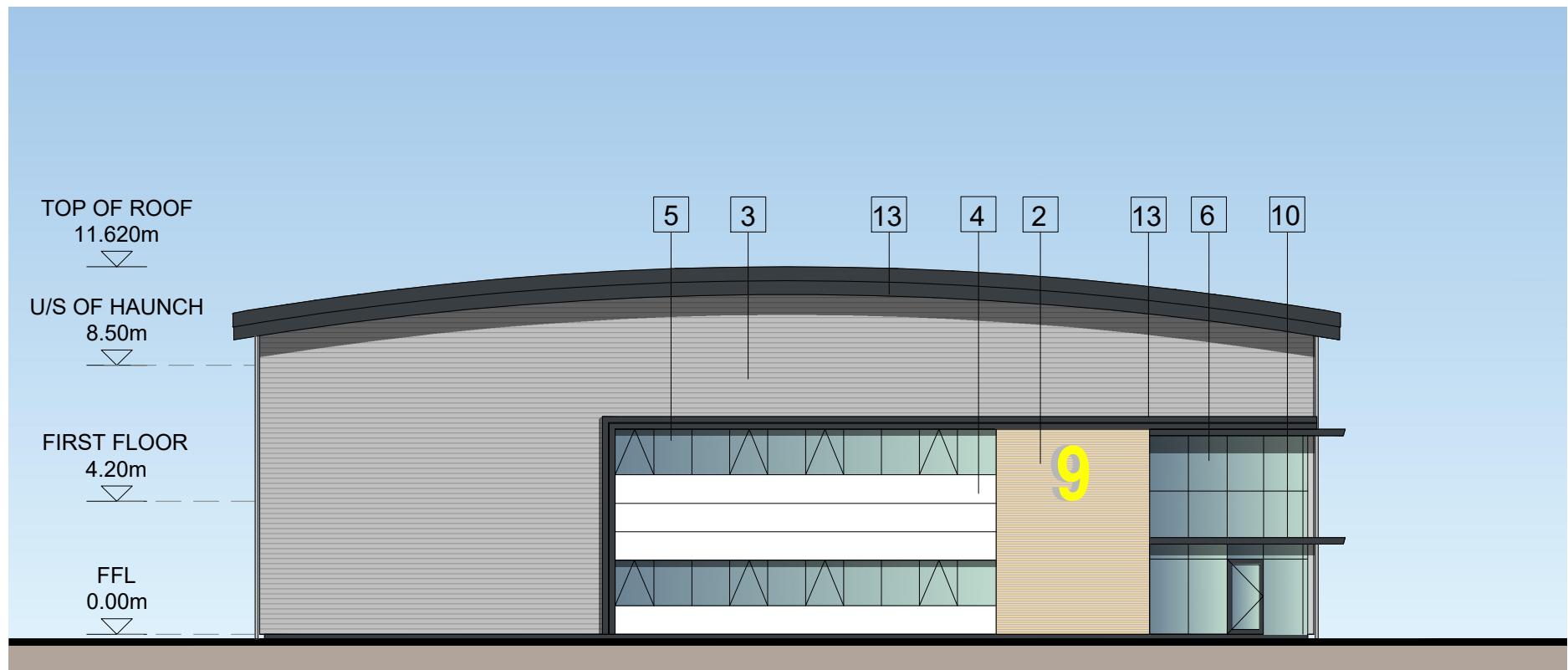
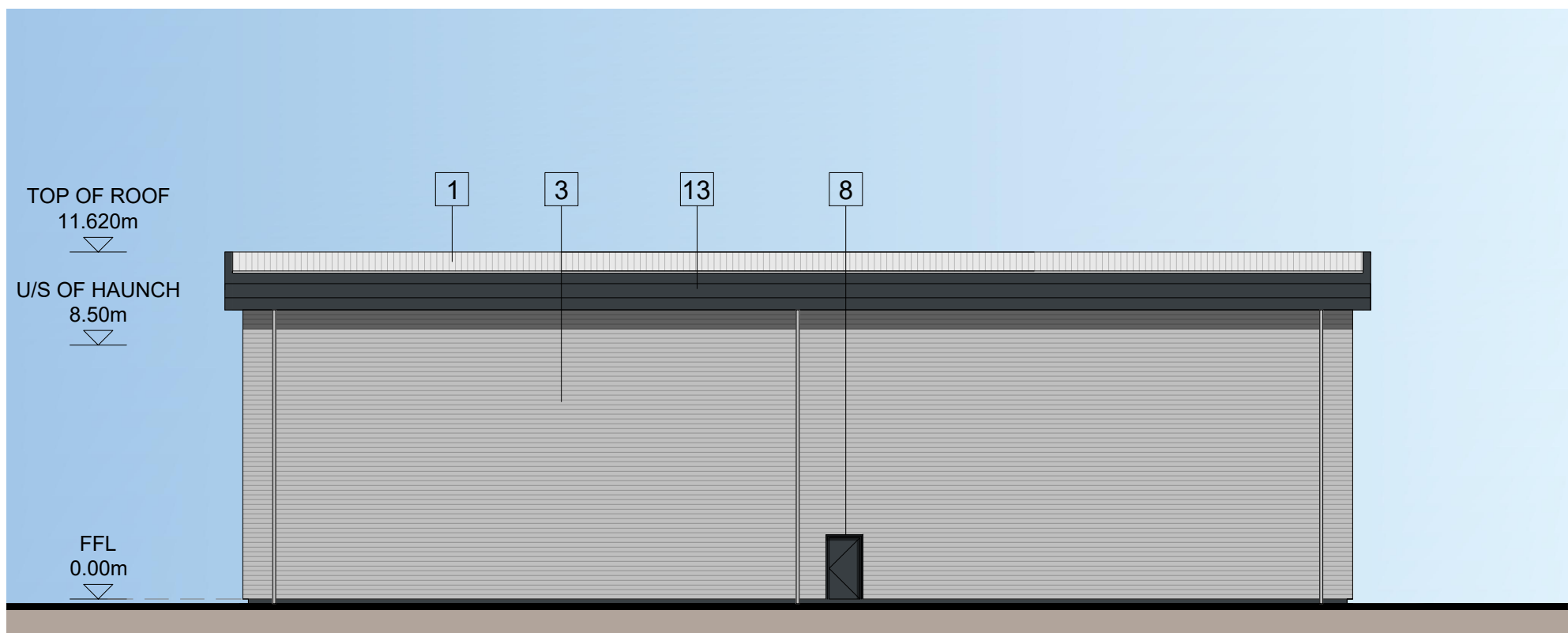


Revisions:	Drawn/Chkd:	Date:
A. Elevations generally revised and updated.	AMc	June 21



NORTH EASTERN ELEVATION



SOUTH EASTERN ELEVATION



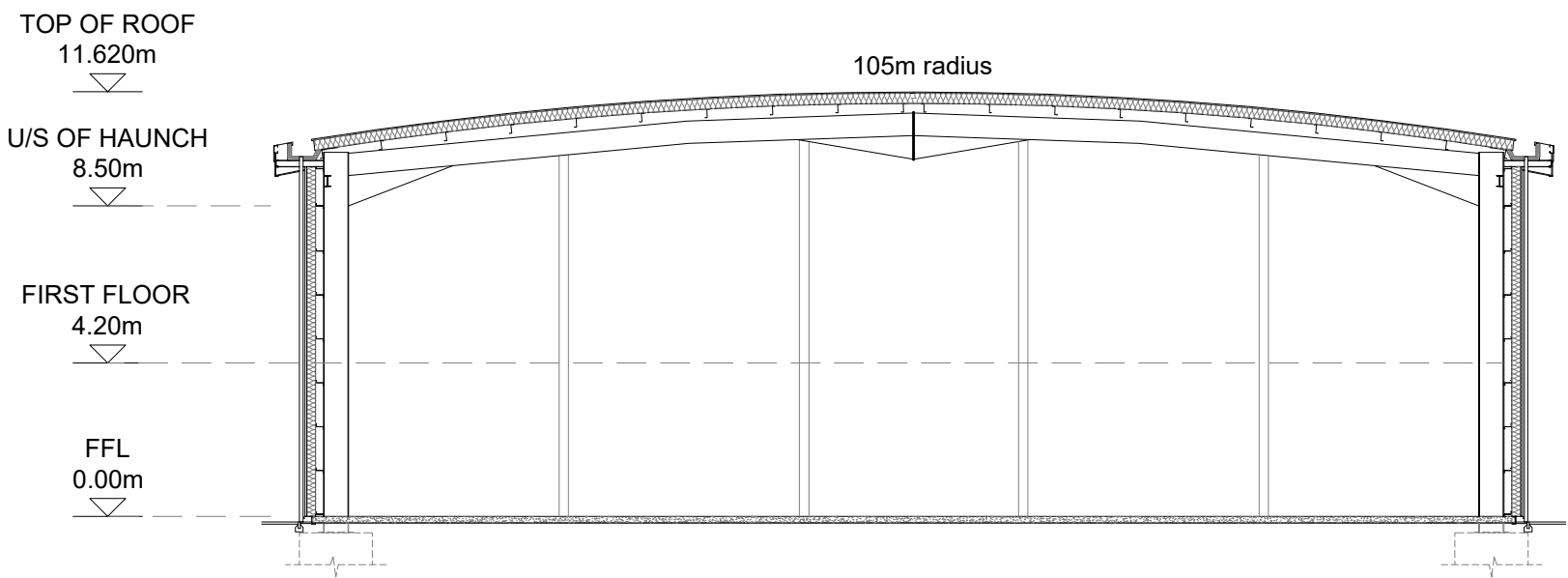
SOUTH WESTERN ELEVATION



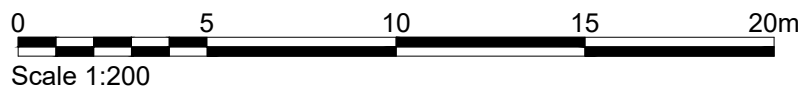
NORTH WESTERN ELEVATION

MATERIALS KEY

- ① PROFILED ROOF CLADDING (GOOSEWING GREY RAL 7038)
- ② BRICKWORK
- ③ HORIZONTAL ARC PROFILE CLADDING (METALLIC SILVER RAL 9006)
- ④ MICRO-RIB CLADDING (WHITE RAL 9010)
- ⑤ ALUMINIUM FRAMED WINDOWS (ANTHRACITE RAL 7016)
- ⑥ ALUMINIUM FRAMED DOUBLE ENTRANCE DOORS AND FULL HEIGHT GLAZING (ANTHRACITE RAL 7016)
- ⑦ LOADING BAY DOORS (ANTHRACITE RAL 7016)
- ⑧ STEEL PERSONNEL DOORS (ANTHRACITE RAL 7016)
- ⑨ STEEL BOLLARD
- ⑩ MAIN ENTRANCE BRISE-SOLEIL
- ⑪ SIGNAGE ZONE, INDICATIVE
- ⑫ ALUMINIUM UNIT NUMERAL
- ⑬ FLASHING (ANTHRACITE RAL 7016)
- ⑭ RAINWATER PIPE (METALLIC SILVER RAL 9006)



TYPICAL CROSS SECTION



Client:
XLB PROPERTY &
PATRON HOOK LTD



Project:
BARTLEY WOOD BUSINESS PARK,
HOOK

12 Warren Yard,
Warren Park,
Milton Keynes,
MK12 5HW
01908 305 246

info@prc-group.com
www.prc-group.com

Drawing Title:
UNIT 9
PROPOSED ELEVATIONS
& SECTION

Scale @ A1: 1:200

Checked by: ME

Date: MAY 21

Job No: 11248

Stage: PL 123

Rev: A

Issue Status:
Construction ☐ Preliminary ☐
Information ☐ Approval ☐
Tender ☐

Offices
Working
London
Milton Keynes
Warsaw