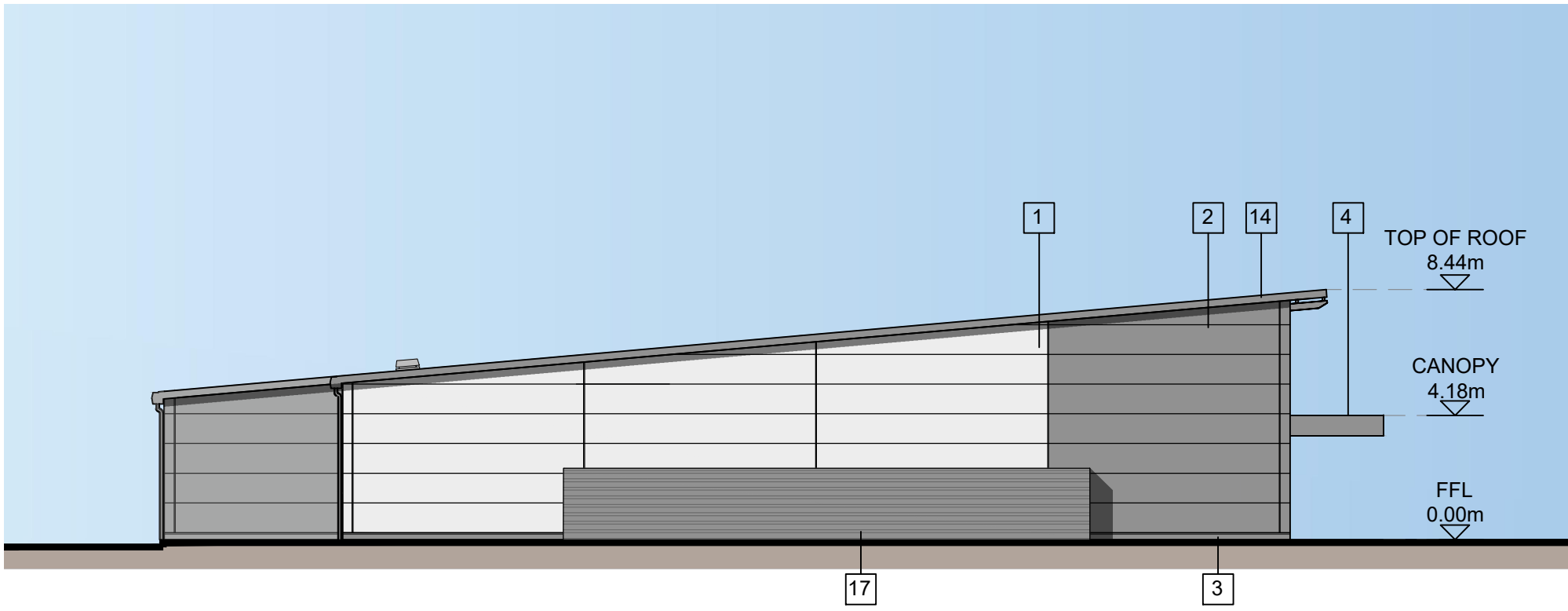
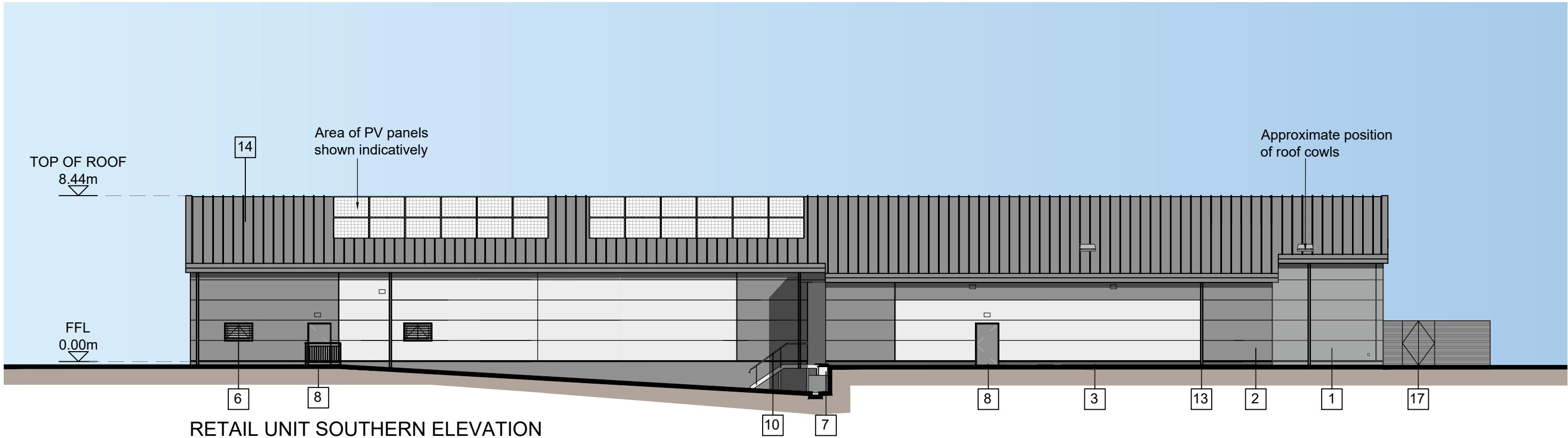


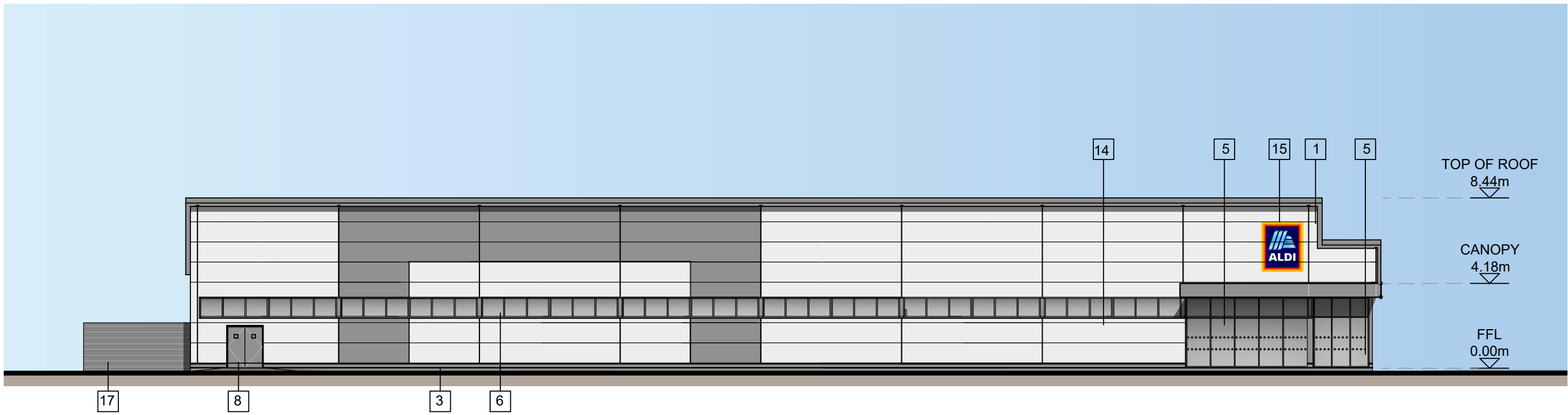
RETAIL UNIT WESTERN ELEVATION



RETAIL UNIT EASTERN ELEVATION



RETAIL UNIT SOUTHERN ELEVATION



RETAIL UNIT NORTHERN ELEVATION

MATERIALS KEY

- 1 MICRORIB CLADDING (METALLIC SILVER RAL 9006)
- 2 MICRORIB CLADDING (ANTHRACITE RAL 7016)
- 3 CHARCOAL BRICKWORK
- 4 ALUMINIUM CANOPY FASCIA (ANTHRACITE RAL 7016 RAL )
- 5 ALUMINIUM FRAMED SHOPFRONTS (RAL 7016 ANTHRACITE)
- 6 ALUMINIUM FRAMED WINDOWS (RAL 7016 ANTHRACITE)
- 7 STEEL SECTIONAL OVERHEAD DOOR (ANTHRACITE RAL 7016)
- 8 STEEL ESCAPE DOORS (ANTHRACITE RAL 7016)
- 9 ALUMINIUM FRAMED AUTOMATIC SLIDING ENTRANCE DOORS (ANTHRACITE RAL 7016)
- 10 HANDRAILS (GALVANISED TUBULAR STEEL)
- 11 TROLLEY BAY RAILS (SATIN FINISH STAINLESS STEEL)
- 12 ALUMINIUM DRIP FLASHING (METALLIC SILVER RAL 9006)
- 13 RAINWATER GOODS PPPC ALUMINIUM (ANTHRACITE RAL 7016)
- 14 TRAPEZOIDAL COMPOSITE ROOF (ANTHRACITE RAL 7016)
- 15 STORE SIGNAGE
- 16 EXTERNAL LIGHTS
- 17 PLANT ENCLOSURE - LOUVRED SCREEN (ANTHRACITE RAL 7016)
- 18 CANOPY ROOF GOOSE WING GREY RAL 7038

Client:  
XLB PROPERTY &  
PATRON HOOK LTD



Project:  
BARTLEY WOOD BUSINESS PARK,  
HOOK

12 Warren Yard,  
Warren Park,  
Milton Keynes,  
MK12 5NW  
01908 305 246

info@prc-group.com  
www.prc-group.com

Drawing Title:  
PROPOSED RETAIL FOODSTORE  
ELEVATIONS

Scale @ A1: 1:200  
Checked by: ME  
Date: MAY 21

Job No: 11248  
Stage: PL  
Drawing No: 124  
Rev: A

Issue Status:  
Construction ☐ Preliminary ☐  
Information ☐ Approval ☒  
Tender ☐

Architecture  
Planning  
Master Planning  
Urban Design  
Interiors  
Landscape

Offices  
Working  
London  
Milton Keynes  
Warsaw