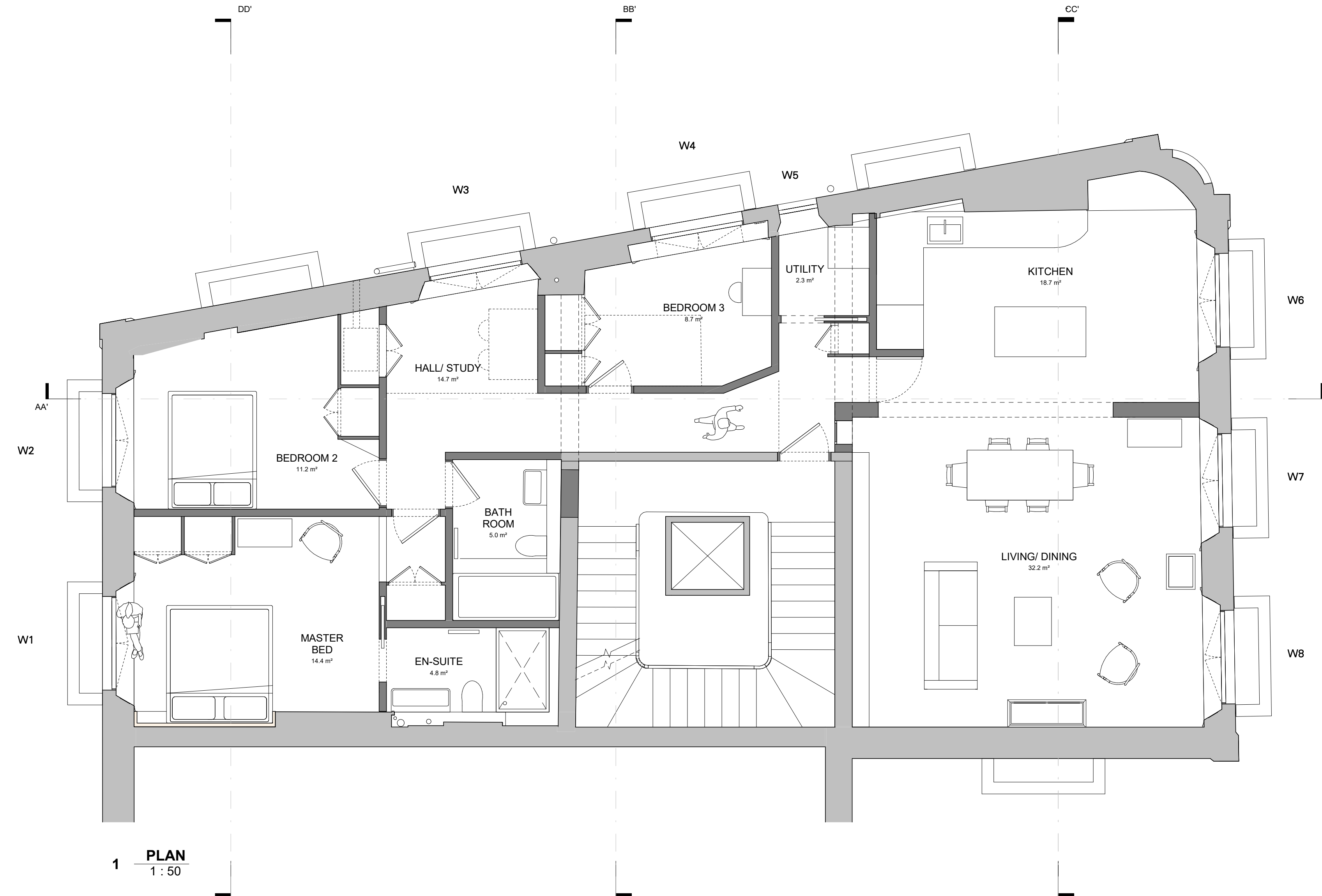


This drawing has been produced for the below named Client for the development of the below named Project and for that application alone and is not intended for use by any other person or for any other purpose. Drawings remain copyright of RAFT and may not be reproduced without written consent or licence. Do not scale off this drawing. All dimensions and levels to be checked on site or measured survey before starting work. Any discrepancies to be reported to architects before execution of relevant works. Read with other drawings and specification.



WINDOW SCHEDULE						
COD E	HEIGH T	WIDTH	OPENING RHS	OPENING LHS	CONDITION	PROPOSED WORKS
W1	2750	1400	Open	Fixed	No condensation, generally good	Reglazing with high performance slim double glazing within the existing, retained window frames. Hinging LHS casement to open, repairing RHS casement opening.
W2	2750	1400	Open	Fixed	No condensation, difficult to open	Reglazing with high performance slim double glazing within the existing, retained window frames. Hinging LHS casement to open, repairing RHS casement opening.
W3	2750	1400	Open	Fixed	No condensation, difficult to close	Reglazing with high performance slim double glazing within the existing, retained window frames. Hinging LHS casement to open, repairing RHS casement opening.
W4	2750	1400	Lower Frame Open	Fixed	Good condition	Reglazing with high performance slim double glazing within the existing, retained window frames. Hinging LHS casement to open, repairing RHS casement opening.
W5	1990	662	Lower Frame Open	N/A	Good condition	Reglazing with high performance slim double glazing within the existing, retained window frame, reglazing currently blind upper pane with clear double glazing. Hinging LHS casement to open.
W6	2750	1400	Open	Fixed	Not openable, blocked	Reglazing with high performance slim double glazing within the existing, retained window frames, reglazing currently blind lower panes with clear double glazing.
W7	2750	1400	Open	Fixed	Cracking throughout	Reglazing with high performance slim double glazing within the existing, retained window frames. Hinging LHS casement to open, repairing RHS casement opening.
W8	2750	1400	Open	Open	Cracking throughout	Reglazing with high performance slim double glazing within the existing, retained window frames.Repairing LHS & RHS casement opening.

P01	Stage 3 Issue	21/07/21	ZP	HP
Issue Record Revision Number	Revision Description	Revision Date	Issued by	Checked by
project name				
CLEVELAND				
client name				
Marta Weiss and Alexander Paseau				
project address				
Flat C, 15 Cleveland Square, W2 6DG, London				
scale				sheet size
1 : 50				A2
drawing title				
Window Schedule				
suitability description				current stage
S4 - Issued for stage approval				3
drawing number				revision
R006_RAFT_00_00_DR_A_5.00				P01