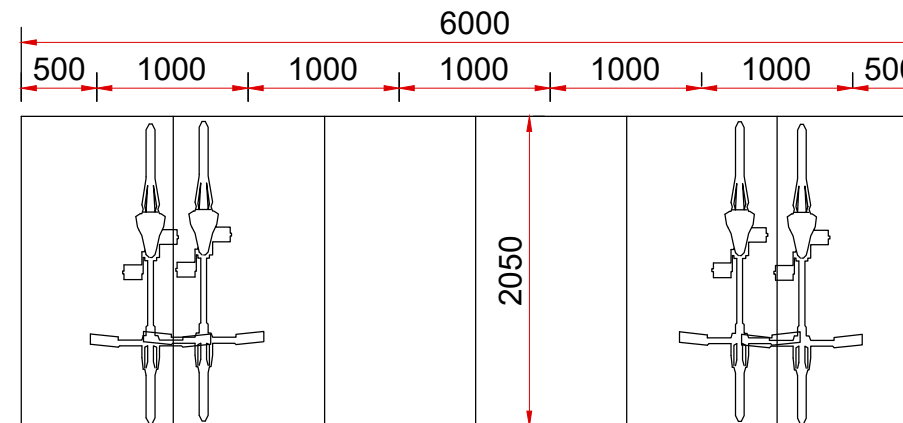
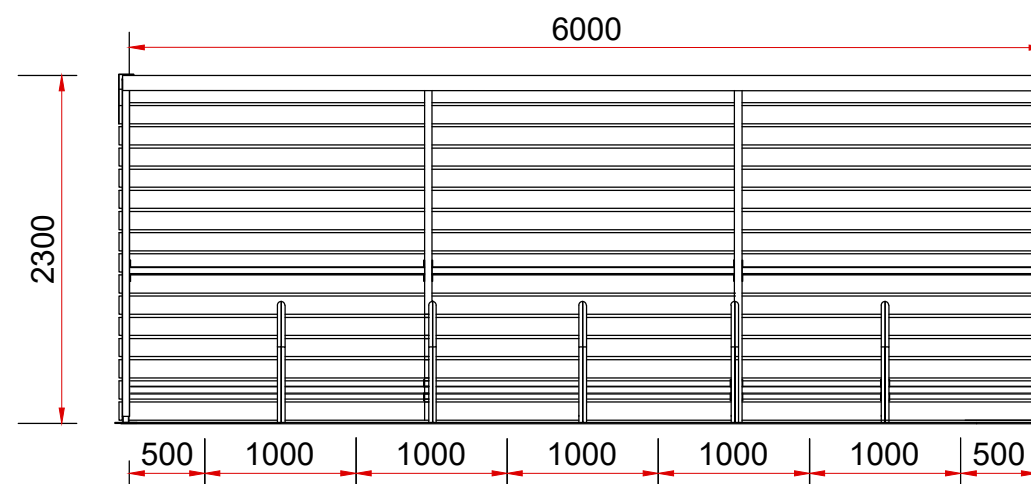


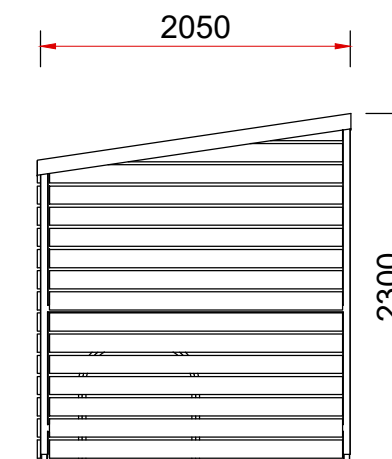
FRONT ELEVATION



Able Canopies Ltd The Grassmere Timber Clad Cycle Shelter.



INTERIOR ELEVATION

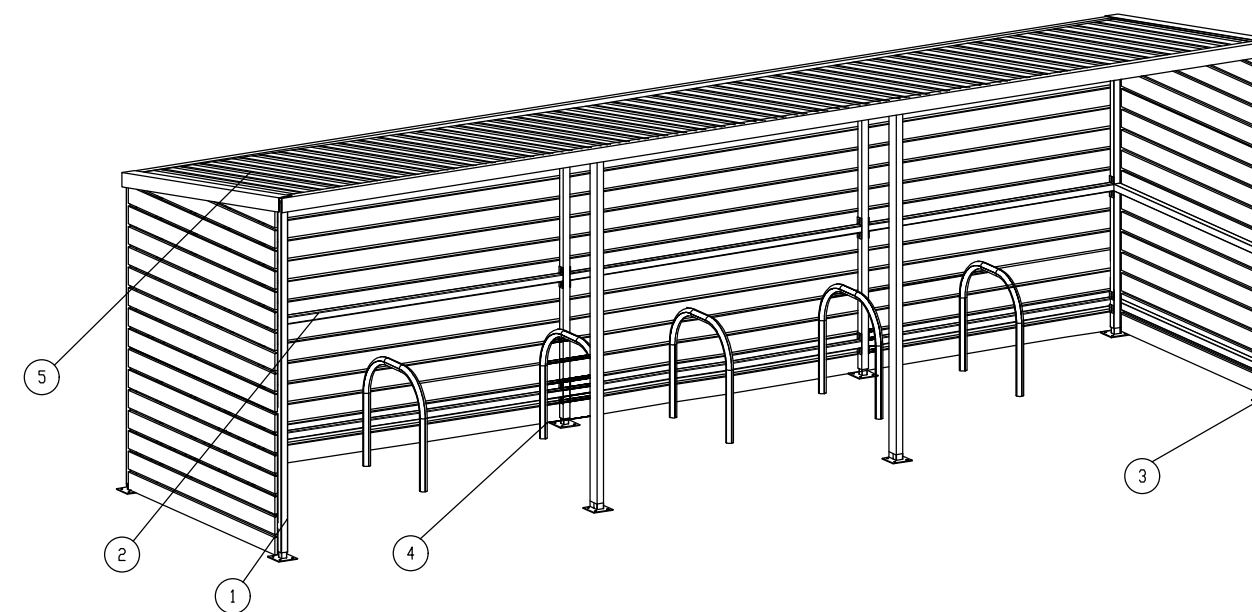
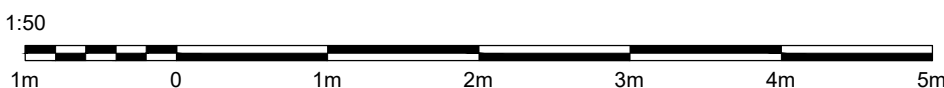


SIDE ELEVATION

Material List & Component Information

- 1, Main frame is made from 50mm x 50mm x 2.5mm steel box section.
- 2, Sections of 50mm x 50mm x 2.5mm steel box are fixed between each roof bar to create a solid frame for the polycarbonate sheets to be clamped to.
- 3, The base plates are approximately 150mm x 150mm x 6mm thick steel, with 4 holes for fixing to the concrete base.
- 4, Toast racks are made from 42.3mm x 3mm steel tube and are fixed using M8 x 25mm bolts into press fit nutserts.
- 5, Shelter is clad with Timber colour Western Red Cedar (this is a low reactive Timber)
- 6, Roof sheets are made from 1mm thick powder coated steel corrugated sheets.

The steel frame is colour Silver Grey RAL7001 Powder Coated & Galvanised.



Unit 2 Sayer House
Oxgate Lane
london
NW2 7JN

tel:+44 (0)208 432 2828 fax:+44 (0) 208 150 6558
admin@morphuse.co.uk -- www.morphuse.co.uk

PROJECT:
25-26 EASTON STREET, HIGH
WYCOMBE, HP11 1NT

CLIENT:

NOTES :

DRAWING : 109 - BICYCLE SHELTER FOR 10 CYCLES

PROJECT STAGE: PLANNING

DRAWN:SM CHECK:

VERSION:

SCALE: 1:50 @ A3

REV:

DATE:
JULY - 2021