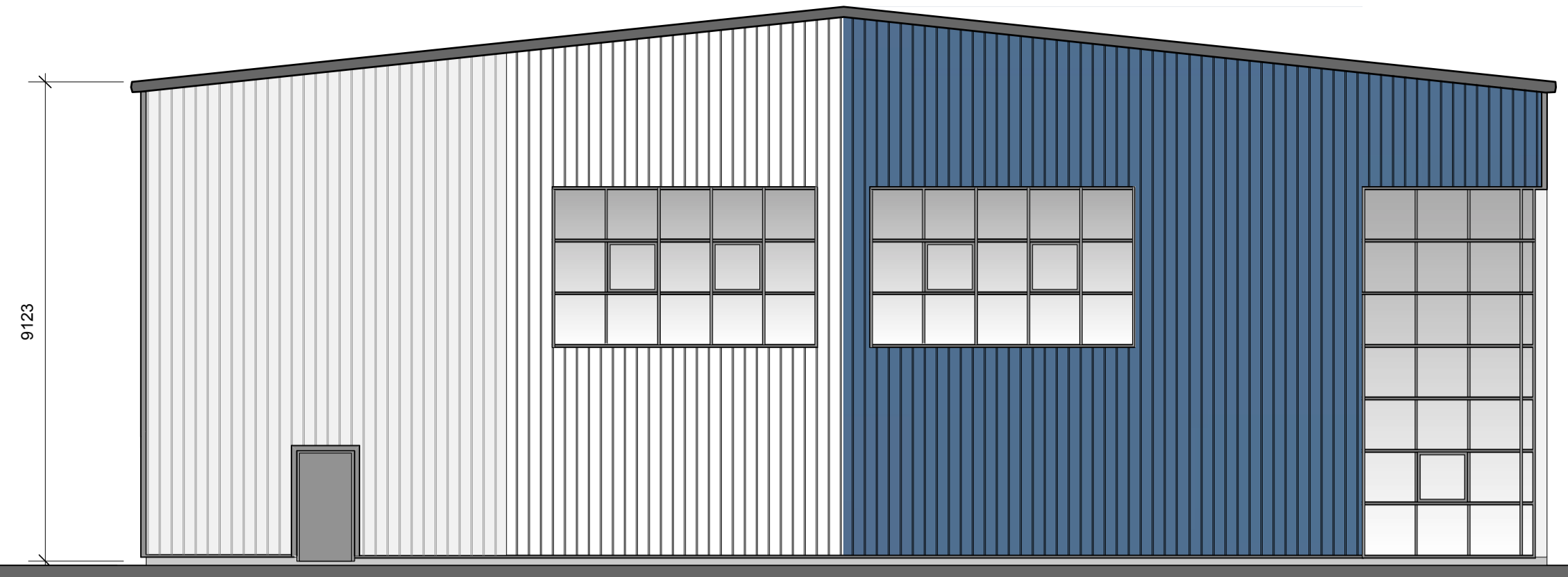
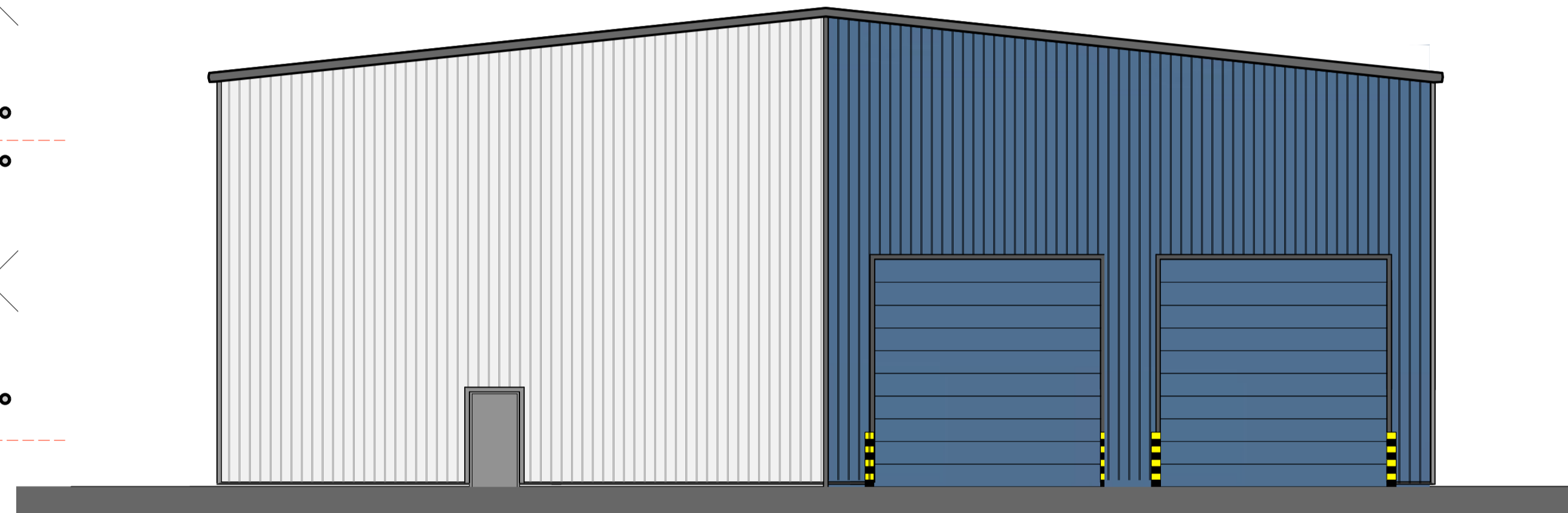
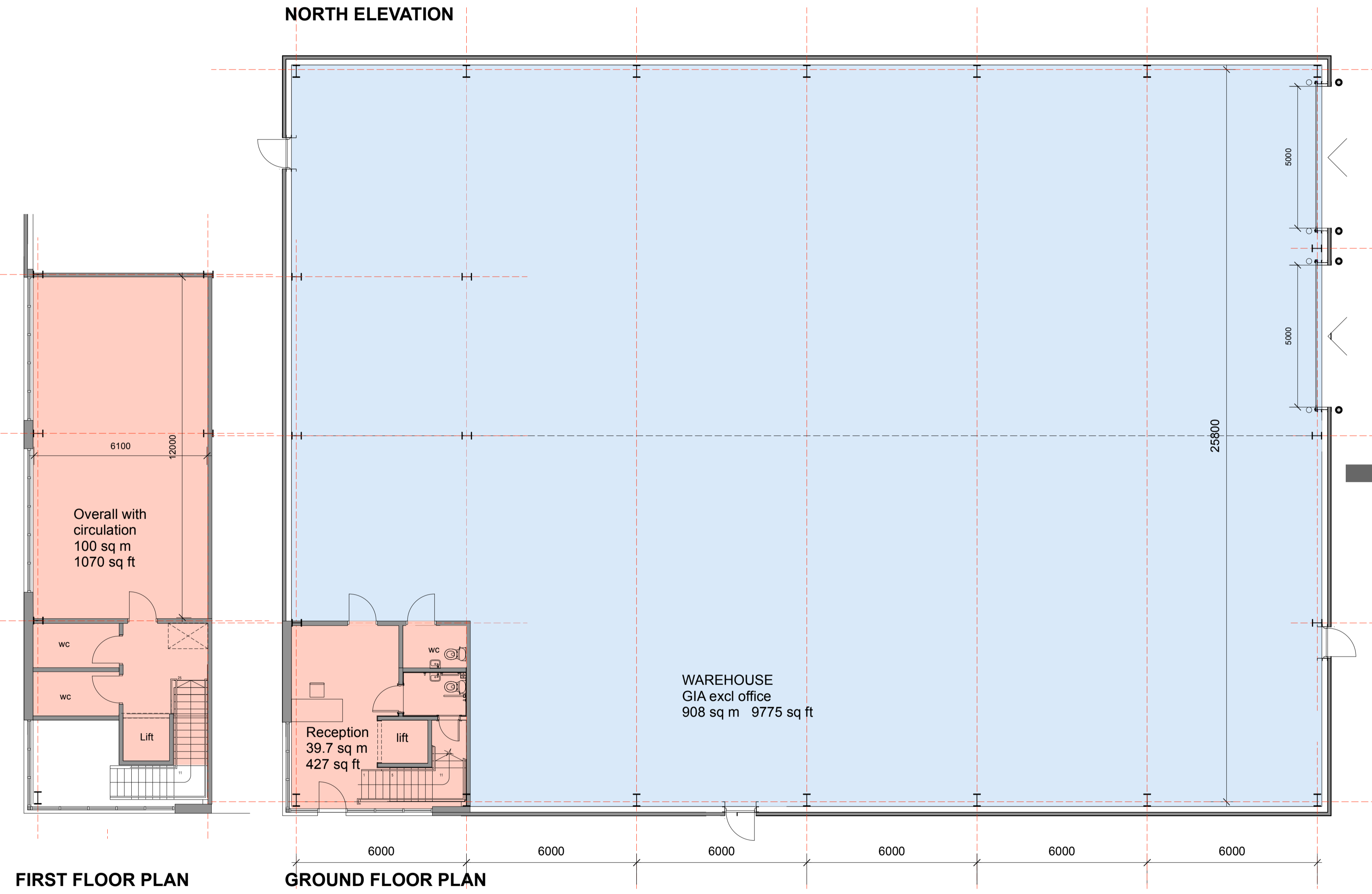


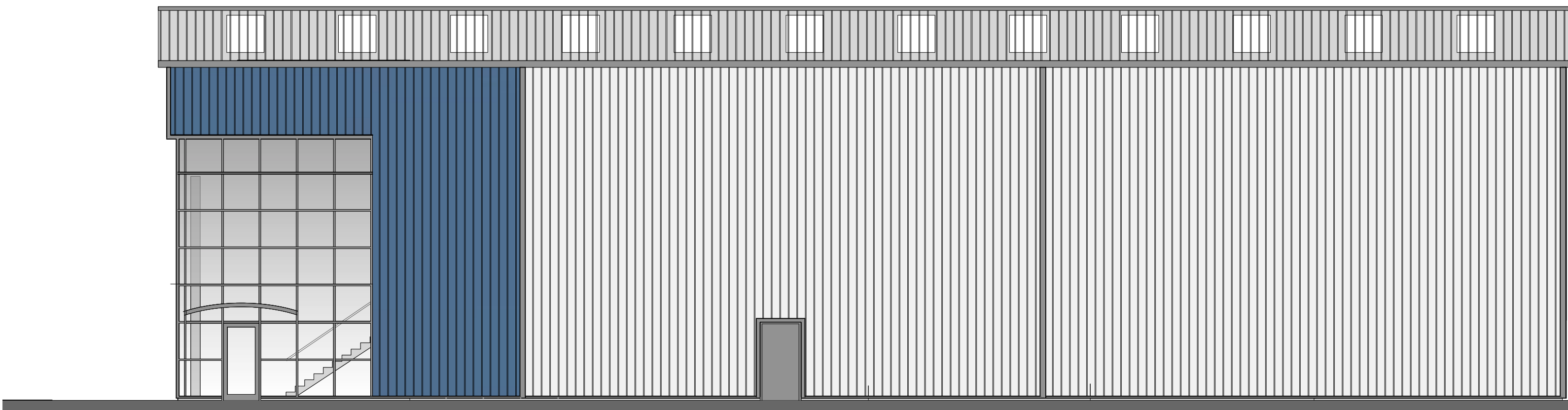
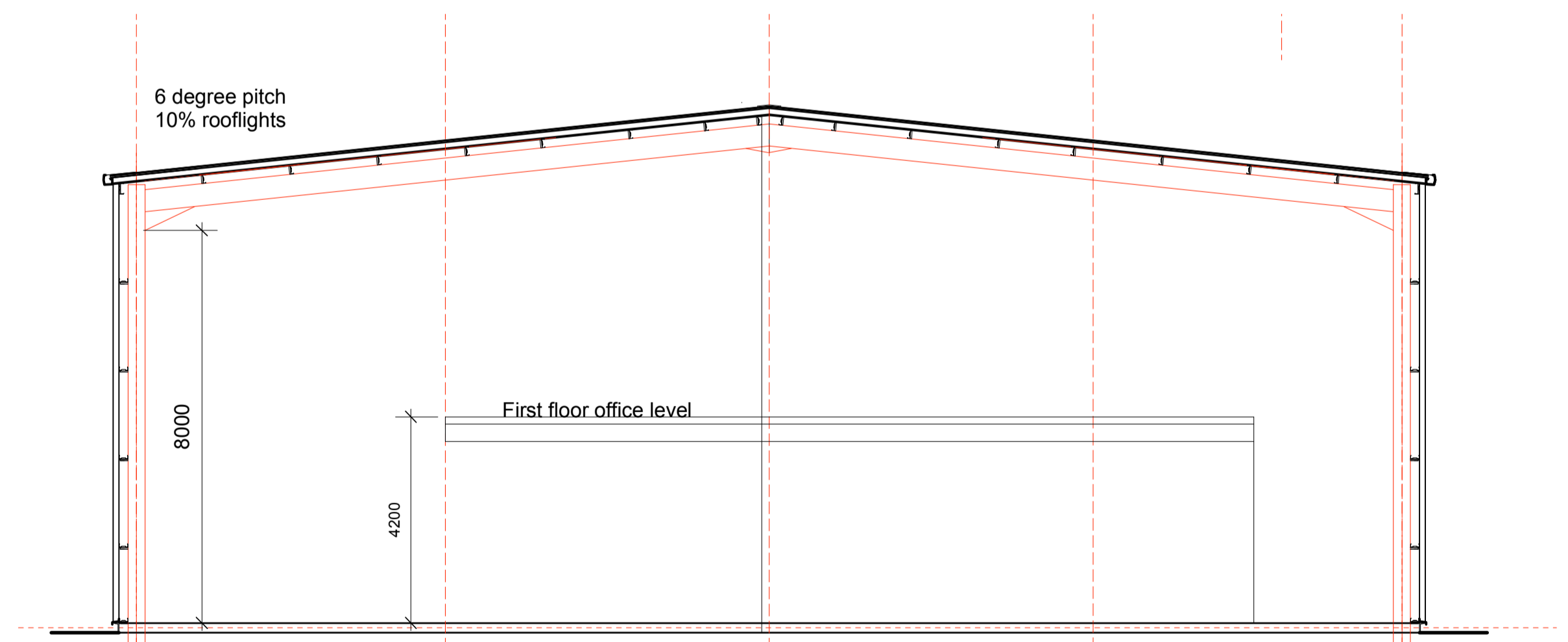
**NORTH ELEVATION**



**WEST ELEVATION**



**EAST ELEVATION**



**SOUTH ELEVATION**


**Materials Key:**

Walls: 80mm Kingspan Goosewing Grey vertical cladding with feature panels of microrb composite horizontal cladding XL Forte Deep Blue RAL 260 40 20  
Mini  
Contrasting flashings and trim RAL 7016 Anthracite Grey

Roof: Composite ribbed metal cladding Goosewing grey with 10% rooflights

Doors: 5 x 5m Insulated loading dock doors and level loading doors: Deep Blue

Windows: Office windows polyester powder coated double glazed RAL 7016

Project	<b>UNIT 9-10 REPLACEMENT</b> FISHWICK INDUSTRIAL ESTATE KILBUCK LANE ST HELENS WA11 9SZ			Drawing Title	<b>PROPOSED PLAN &amp; ELEVATIONS</b>		
Client	WILLIAM FISHWICK & SON LTD			Drawing No	<b>20011 P104</b>	rev	
Status	<b>PLANNING APPLICATION</b>			<small>Damson Consultancy Limited Pells Test Farm Studio Kilby, Lonsdale Cumbria 015395 41743 tony@damsondesign.com architects and landscape designers</small> 			
Scale	1: 100	Drwg size	A1	Drawn	TH	Date	2 7 21