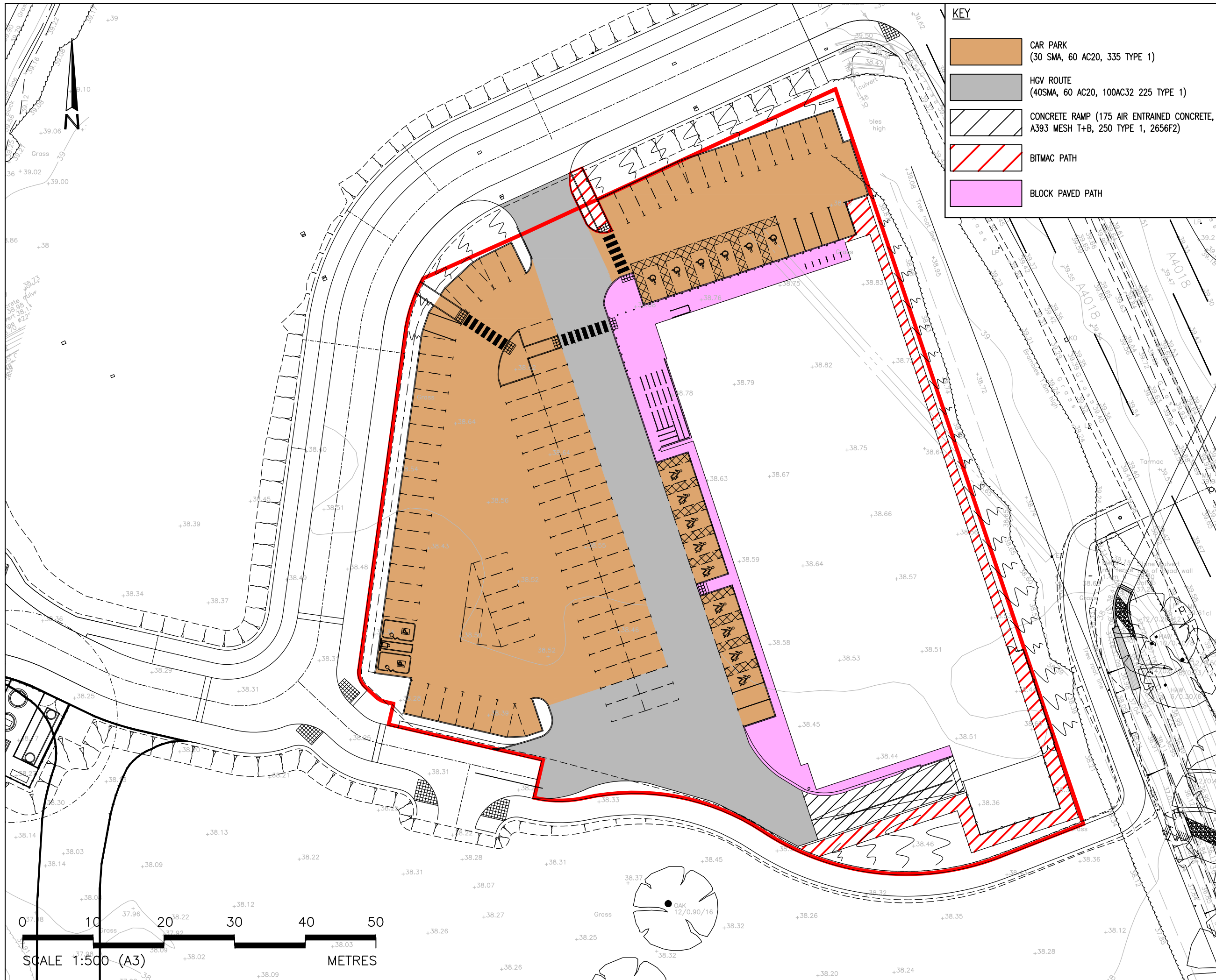


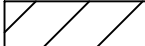




DWG INFO: M:\BS1192\B05581 - CRIBBS TRIANGLE FOODSTORE\01_MIP_DR_DRAWING\B05581-C-800A - SURFACING



KEY

	CAR PARK (30 SMA, 60 AC20, 335 TYPE 1)
	HGV ROUTE (40SMA, 60 AC20, 100AC32 225 TYPE 1)
	CONCRETE RAMP (175 AIR ENTRAINED CONCRETE, A393 MESH T+B, 250 TYPE 1, 2656F2)
	BITMAC PATH
	BLOCK PAVED PATH

CDM RESIDUAL RISKS
 The work shown on this drawing is both familiar to the designers and routinely safely built in similar circumstances by competent contractors.
 Risks are not considered significant.
 Relevant data is included in the Pre-Construction Information Pack
 Signed: **D. HENSON** Date: **13.05.21**

DO NOT SCALE THIS DRAWING FOR CONSTRUCTION PURPOSES.
 CONTRACTOR TO CHECK ALL DIMENSIONS AND REPORT ALL ERRORS AND OMISSIONS TO THE ENGINEER

Rev	Detail	By	Chk	Date
A	UPDATED TO SUIT LAYOUT	MY	DH	15.07.21
*	PRELIMINARY FIRST ISSUE.	MY	DH	17.05.21

clarkebond
 MULTIDISCIPLINARY ENGINEERING CONSULTANTS
 The Cocoa House
 129 Cumberland Road
 Bristol BS1 6UY
 tel +44 (0) 117 929 2244
 fax +44 (0) 117 929 3095
 e-mail bristol@clarkebond.com
 web www.clarkebond.com
 Bristol Exeter London

Client
CRIBBS TRIANGLE LIMITED
 Project
CRIBBS TRIANGLE FOODSTORE SITE

Drawing Title
SURFACING PLAN

Drawing Status
PLANNING

Project No. B05581	Discipline C	Drawing No. 800
Scale 1:500	Date 05.2021	Revision
Drawn MY	Checked DH	Sheet Size A3
		A

© This drawing may not be copied without prior written permission