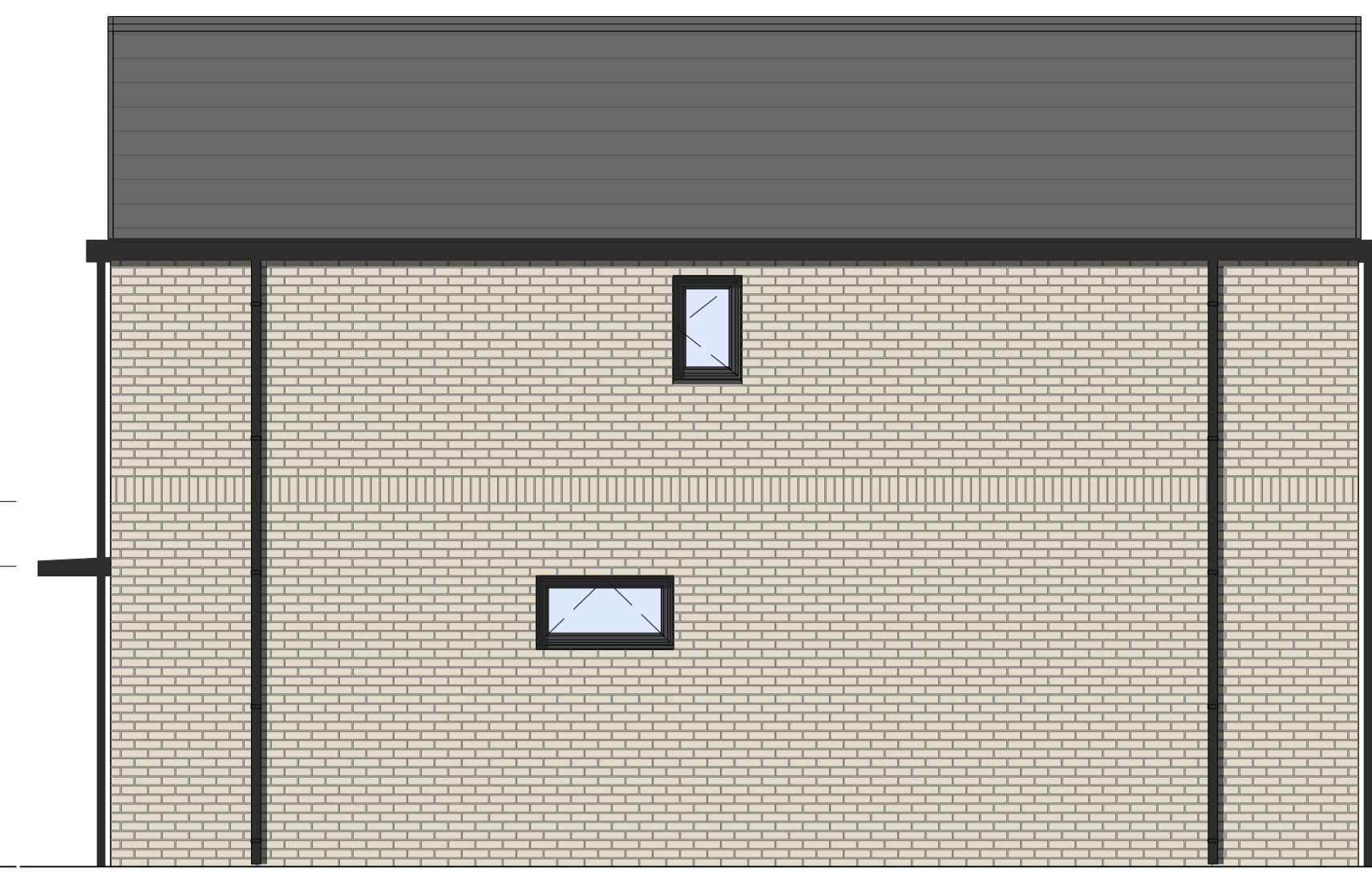




Front Elevation Gable Front - Brick Option A



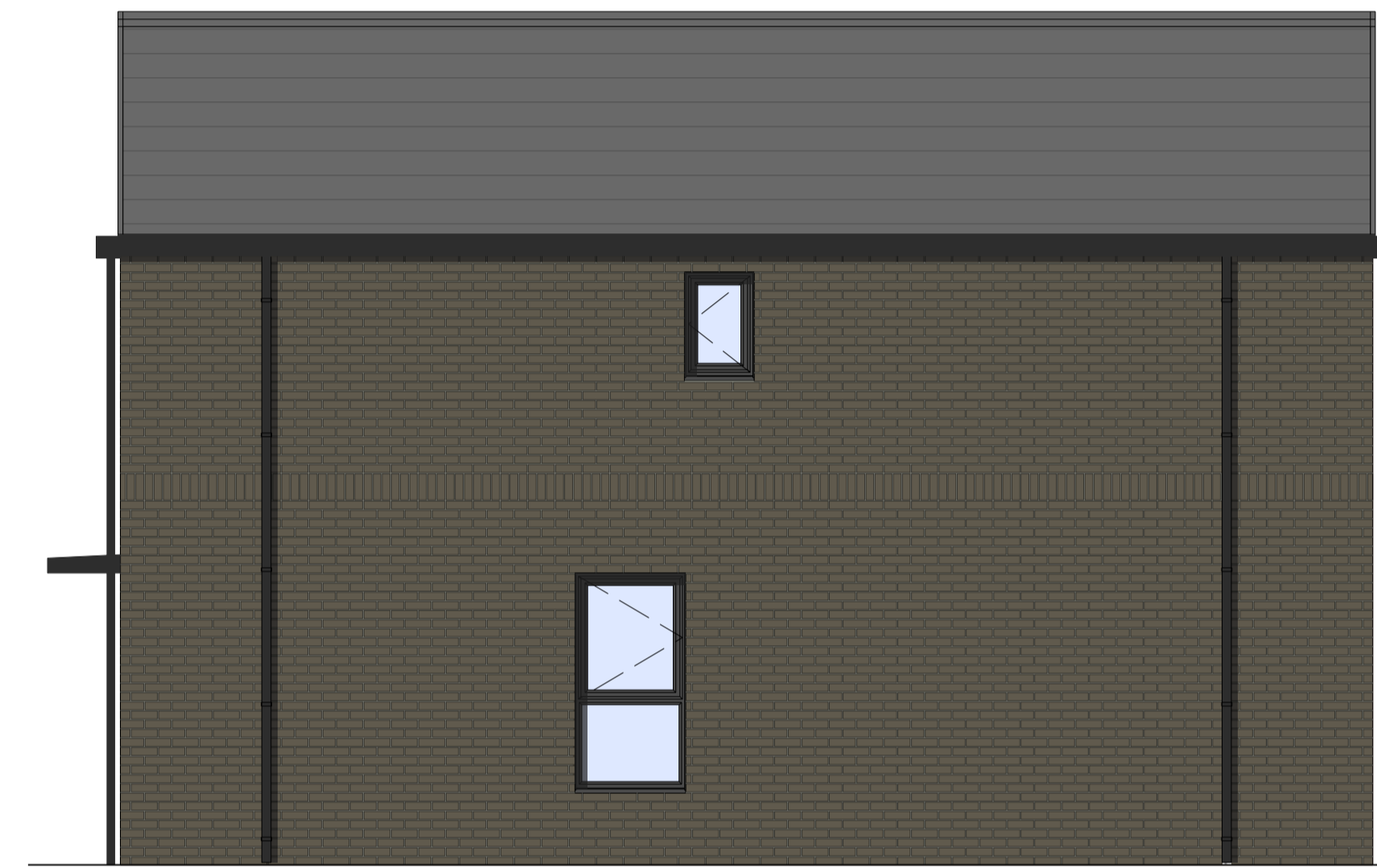
Side Elevation Gable Front - Brick Option A



Rear Elevation Gable Front - Brick Option A



Front Elevation Gable Front - Brick Option B



Side Elevation Gable Front - Brick Option B

Notes:  
 All contractors must visit the site and be responsible for taking and checking Dimensions.  
 All construction information should be taken from figured dimensions only.  
 Any discrepancies between drawings, specifications and site conditions must be brought to the attention of the supervising officer.  
 This drawing and the works depicted are the copyright of JTP.  
 This drawing is for planning purposes only. It is not intended to be used for construction purposes. Whilst all reasonable efforts are used to ensure drawings are accurate, JTP accept no responsibility or liability for any reliance placed on, or use made of, this plan by anyone for purposes other than those stated above.

Key

**Material Key**

Material option A  
 Buff multi facing brick cladding with light grey mortar

Material option B  
 Grey multi facing brick cladding with grey mortar

Accent panel to entrance; Soltherm render panel in Regency Blue

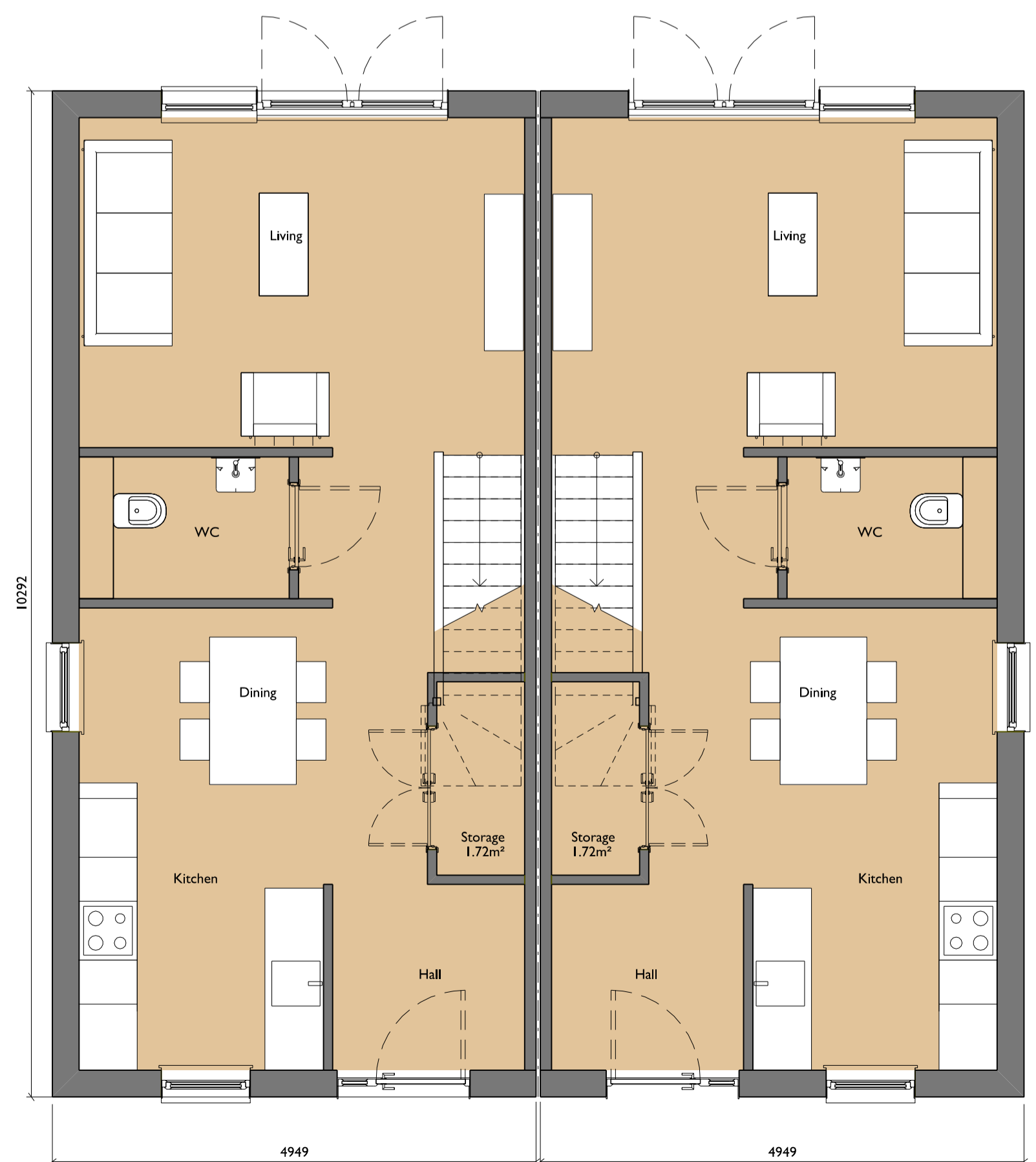
Accent panel to entrance; Soltherm render panel in Pale Orange

Ceramic slate roof tile in slate grey

Flush sash uPVC windows in an anthracite grey finish on the outside and white on the inside

Aluminium gutters and down pipes finished in PPC anthracite grey

Note: Please refer to drawing HST-JTP-SW-GL-DR-A-SL-5004 for material locations.



Ground Floor



First Floor

Rev	Date	Description	Drawn	Chkd
P3	07.07.21	Planning submission updates.	SC	GA
P2	02.07.21	Planning submission updates.	SC	GA
P1	30.06.21	First issue for planning.	SC	GA

Rev	Date	Description	Drawn	Chkd

PLANNING

Client

JTP Studios  
 Unit 5, The Rum Warehouse  
 Pennington Street  
 London, E1W 2AP  
 +44 (0)20 7017 1780  
 www.jtp.co.uk

Project  
**Hoodlands Farm**

Drawing Title  
**Housetype THC3  
 Gable**

Scale @ A1 1:50 Job Ref. 01784A  
 Drawing No. HST-JTP-HC6-ZZ-DR-A-GA-5104 Revision P3

