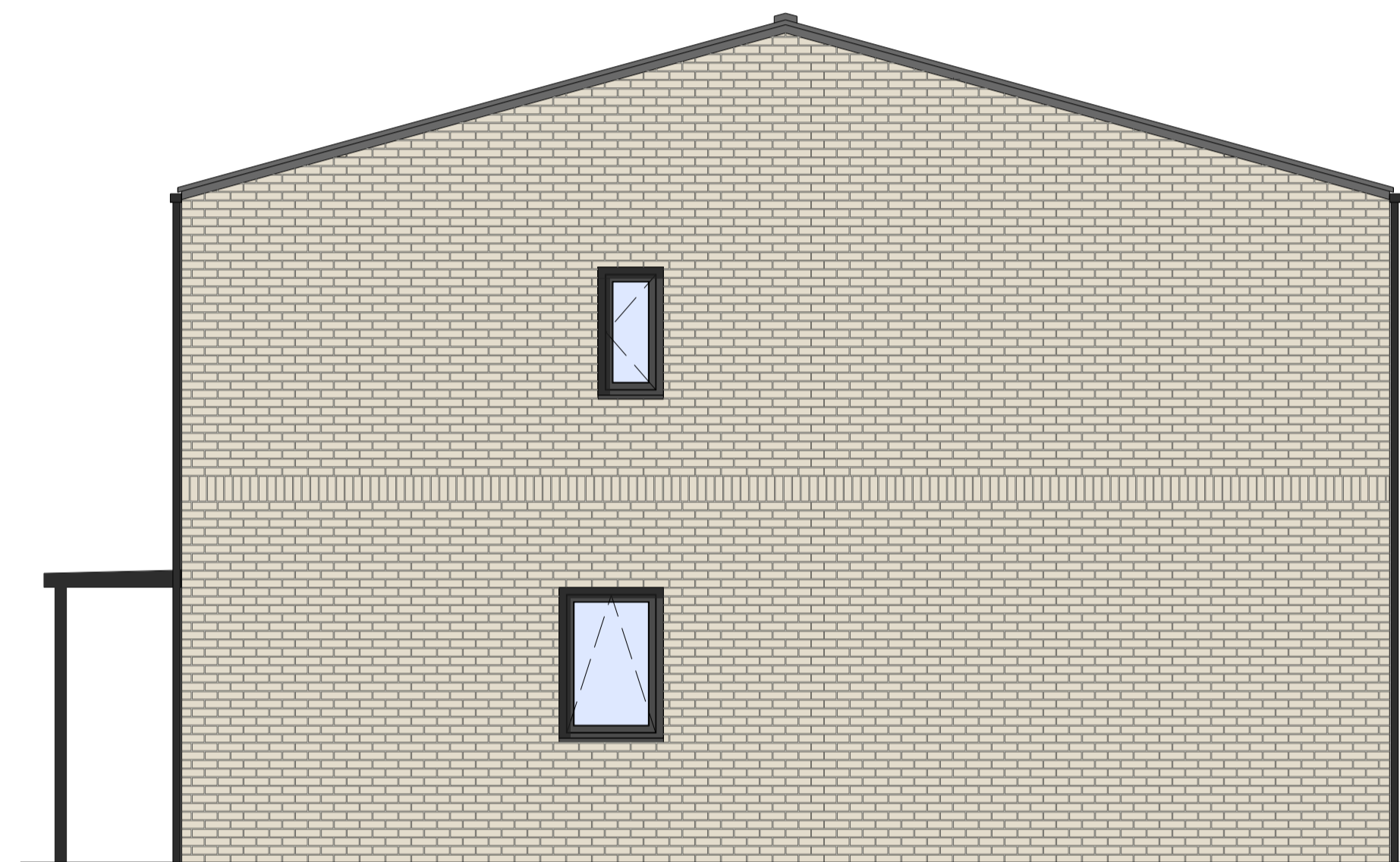




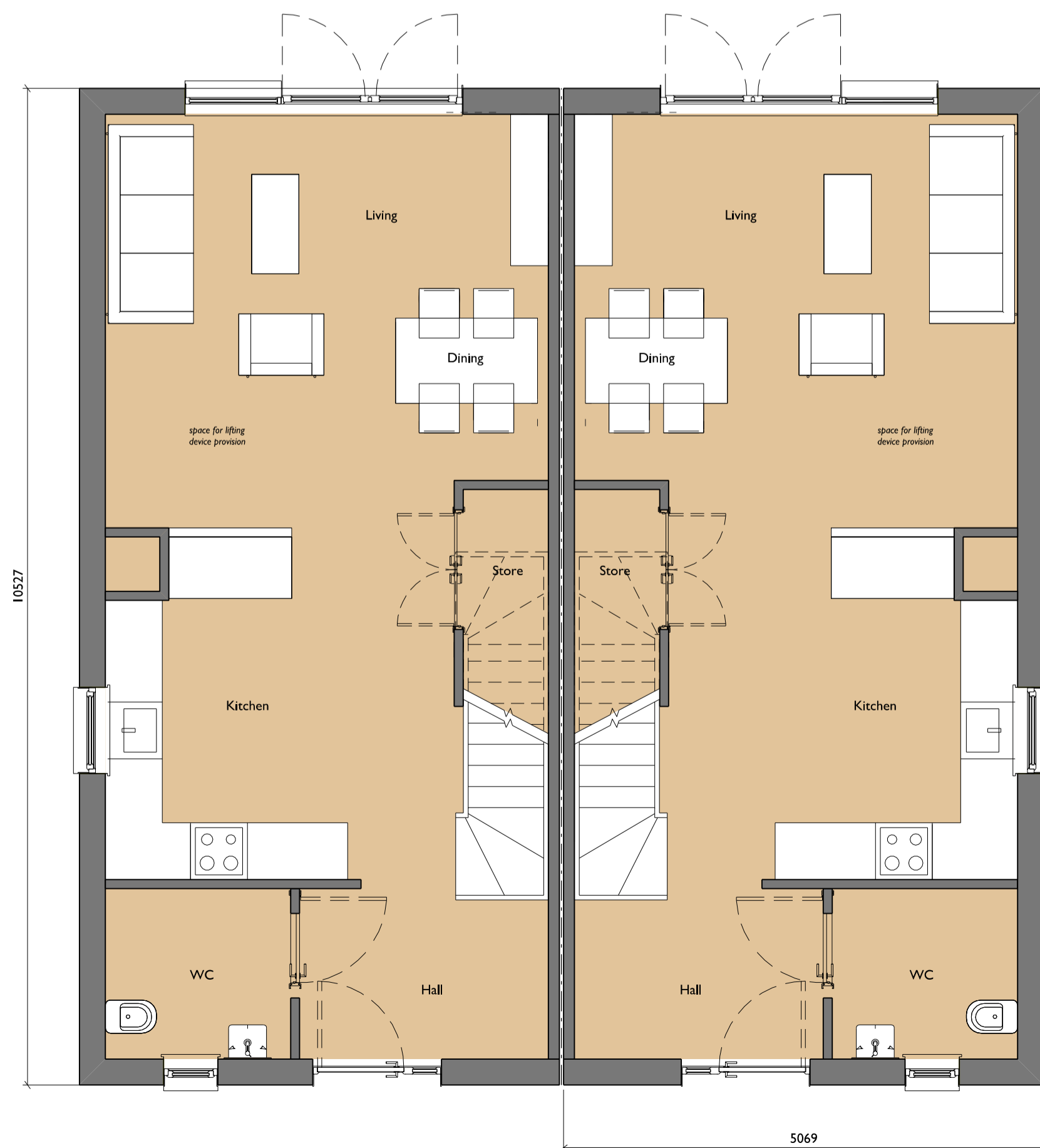
Front Elevation - Brick Option A



Rear Elevation - Brick Option A



Side Elevation - Brick Option A



Ground Floor



First Floor

Notes:

All contractors must visit the site and be responsible for taking and checking Dimensions.
 All construction information should be taken from figured dimensions only.
 Any discrepancies between drawings, specifications and site conditions must be brought to the attention of the supervising officer.
 This drawing and the works depicted are the copyright of JTP.

This drawing is for planning purposes only. It is not intended to be used for construction purposes. Whilst all reasonable efforts are used to ensure drawings are accurate, JTP accept no responsibility or liability for any reliance placed on, or use made of, this plan by anyone for purposes other than those stated above.

Key

Material Key

- Material option A
 - Buff multi facing brick cladding with light grey mortar
- Material option B
 - Grey multi facing brick cladding with grey mortar
- Accent panel to entrance:
 - Soltherm render panel in Regency Blue
 - Soltherm render panel in Pale Orange
- Ceramic slate roof tile in slate grey
- Flush sash uPVC windows in an anthracite grey finish on the outside and white on the inside
- Aluminium gutters and down pipes finished in PPC anthracite grey

Note: Please refer to drawing HST-JTP-SW-GL-DR-A-SL-5004 for material locations.

Rev	Date	Description	Drawn	Chkd
P2	02.07.21	Planning submission updates.	SC	GA
P1	30.06.21	First issue for planning.	SC	GA

Drawing Status

PLANNING

Client

JTP Studios
 Unit 5, The Rum Warehouse
 Pennington Street
 London, E1W 2AP
 +44 (0)20 7017 1780
 www.jtp.co.uk

Project
Hoodlands Farm

Drawing Title
**Housetype THC6
 FtB**

Scale @ A1 1:50 Job Ref. 01784A

Drawing No. HST-JTP-HC6-ZZ-DR-A-GA-5105 Revision P2

