

Key, signs and symbols

Cycle routes		Other information	
			National Cycle Network route number
			Regional Cycle Network route number
			Light controlled crossing
			Closed road with cycle exemption
			Cycle contra flow / One way
			Footbridge
Bristol signed cycleways			Road
	Downs Way		Motorway
	Bristol to Bath Railway Path		Railway / Station / Level crossing
	Portway		Local authority boundary
	Whitchurch Way	Better By Bike	
	River Avon Trail		Public bike pump / BMX / Mountain biking
	Malago Greenway	Symbols	
	Frome Valley Greenway		Tourist information / National Trust / Museum / Historic attraction
	Concorde Way		Nature reserve / Heritage railway / Farm shop / Other attraction
	Festival Way		University / College / School
	Filwood Greenway		Hospital / Park & Ride / Bus station
	Wesley Way		Sports or leisure centre / Library / Community centre
	Southmead Quietway		

Contours are shown at 10 metre intervals

Whilst every effort has been made to ensure the accuracy of these maps, South Gloucestershire Council, FourPoint Mapping and partners cannot be held responsible for any errors or omissions. Users of these routes do so at their own risk.

Scale 1:40,000
 0 Miles
 0 Kilometres

Contains Ordnance Survey data © Crown copyright and database right 2019.

Appendix E: Bus Timetable



m1

Cribbs Causeway - Bristol Centre - Hengrove

HCT Group

Timetable valid from 16/05/2021 until further notice.

Direction of stops: where shown (eg: W-bound) this is the compass direction towards which the bus is pointing when it stops

Mondays to Fridays

Table with columns for stop names and departure times from 0600 to 0910. Rows include Cribbs Causeway, Frenchay Campus, Bristol City Centre, Bedminster, and Hengrove Park.

Mondays to Fridays

Table with columns for stop names and departure times from 0920 to 1316. Rows include Cribbs Causeway, Frenchay Campus, Bristol City Centre, Bedminster, and Hengrove Park.

Notes: § - Time at this stop is indicative. You are advised to be at any stop several minutes before the times shown



Timetable valid from 16/05/2021 until further notice.

Direction of stops: where shown (eg: W-bound) this is the compass direction towards which the bus is pointing when it stops

Mondays to Fridays

Table with columns for stop names and times from 1220 to 1623. Rows include Cribbs Causeway, Patchway, Bradley Stoke, Frenchay, Bristol City Centre, Bedminster, Inn's Court, and Hengrove Park.

Mondays to Fridays

Table with columns for stop names and times from 1520 to 1916. Rows include Cribbs Causeway, Patchway, Bradley Stoke, Frenchay, Bristol City Centre, Bedminster, Inn's Court, and Hengrove Park.

Notes: § - Time at this stop is indicative. You are advised to be at any stop several minutes before the times shown



Timetable valid from 16/05/2021 until further notice.

Direction of stops: where shown (eg: W-bound) this is the compass direction towards which the bus is pointing when it stops

Mondays to Fridays

Table with columns for stop names and departure/arrival times from 1820 to 0029. Includes stops like Cribbs Causeway, Bradley Stoke, Frenchay Campus, Bristol City Centre, and Hengrove Park.

Mondays to Fridays

Table with columns for stop names and departure/arrival times from 2350 to 0109. Includes stops like Cribbs Causeway, Bradley Stoke, Frenchay Campus, Bristol City Centre, and Hengrove Park.

Notes: * - Part or all of this journey operates in the morning of the following day
§ - Time at this stop is indicative. You are advised to be at any stop several minutes before the times shown



Timetable valid from 16/05/2021 until further notice.

Direction of stops: where shown (eg: W-bound) this is the compass direction towards which the bus is pointing when it stops

Saturdays

Table with columns for stop names and departure times (0600-1040). Rows include Cribbs Causeway, Patchway, Bradley Stoke, Frenchay Campus, Bristol City Centre, Bedminster, Inn's Court, and Hengrove Park.

Saturdays

Table with columns for stop names and departure times (1055-1402). Rows include Cribbs Causeway, Patchway, Bradley Stoke, Frenchay Campus, Bristol City Centre, Bedminster, Inn's Court, and Hengrove Park.

Notes: § - Time at this stop is indicative. You are advised to be at any stop several minutes before the times shown



Timetable valid from 16/05/2021 until further notice.

Direction of stops: where shown (eg: W-bound) this is the compass direction towards which the bus is pointing when it stops

Saturdays

Table with 13 columns representing departure times and 13 rows of bus routes including Cribbs Causeway, Frenchay Campus, Bristol City Centre, Bedminster, and Hengrove Park.

Saturdays

Table with 13 columns representing departure times and 13 rows of bus routes including Cribbs Causeway, Frenchay Campus, Bristol City Centre, Bedminster, and Hengrove Park.

Notes: § - Time at this stop is indicative. You are advised to be at any stop several minutes before the times shown



Timetable valid from 16/05/2021 until further notice.

Direction of stops: where shown (eg: W-bound) this is the compass direction towards which the bus is pointing when it stops

Saturdays

Table with columns for stop names and departure times. Rows include Cribbs Causeway, Bus Station (Stop E), Patchway, Fire Station (NE-bound), Bradley Stoke, Patchway Brook (SE-bound), Frenchay, Frenchay Campus (Stop E), Bristol City Centre, The Centre (C1), Bedminster, Bedminster Parade (SW-bound), Bedminster, Parson Street Stn (S-bound), Inn's Court, Inns Court (E-bound), and Hengrove Park, Hengrove Park (E-bound).

Saturdays

Table with columns for stop names and departure times. Rows include Cribbs Causeway, Bus Station (Stop E), Patchway, Fire Station (NE-bound), Bradley Stoke, Patchway Brook (SE-bound), Frenchay, Frenchay Campus (Stop E), Bristol City Centre, The Centre (C1), Bedminster, Bedminster Parade (SW-bound), Bedminster, Parson Street Stn (S-bound), Inn's Court, Inns Court (E-bound), and Hengrove Park, Hengrove Park (E-bound).

Notes: * - Part or all of this journey operates in the morning of the following day
§ - Time at this stop is indicative. You are advised to be at any stop several minutes before the times shown



Timetable valid from 16/05/2021 until further notice.

Direction of stops: where shown (eg: W-bound) this is the compass direction towards which the bus is pointing when it stops

Saturdays

Table with columns for stop names, direction, and departure times (2330, 2350, 0010). Includes stops like Cribbs Causeway, Bradley Stoke, Frenchay Campus, Bristol City Centre, Bedminster Parade, and Hengrove Park.

Sundays

Table with columns for stop names, direction, and departure times (0600 to 1137). Includes stops like Cribbs Causeway, Bradley Stoke, Frenchay Campus, Bristol City Centre, Bedminster Parade, and Hengrove Park.

Notes: * - Part or all of this journey operates in the morning of the following day
§ - Time at this stop is indicative. You are advised to be at any stop several minutes before the times shown



Timetable valid from 16/05/2021 until further notice.

Direction of stops: where shown (eg: W-bound) this is the compass direction towards which the bus is pointing when it stops

Sundays

Table with columns for stop names and departure times. Rows include Cribbs Causeway, Frenchay Campus, Bristol City Centre, Bedminster, Inn's Court, and Hengrove Park.

Sundays

Table with columns for stop names and departure times. Rows include Cribbs Causeway, Frenchay Campus, Bristol City Centre, Bedminster, Inn's Court, and Hengrove Park.

Notes: § - Time at this stop is indicative. You are advised to be at any stop several minutes before the times shown



Timetable valid from 16/05/2021 until further notice.

Direction of stops: where shown (eg: W-bound) this is the compass direction towards which the bus is pointing when it stops

Sundays

Table with columns for stop names and departure times (dep) and arrival times (arr) for various bus routes on Sundays. Includes routes like Cribbs Causeway, Frenchay Campus, Bristol City Centre, and Hengrove Park.

Sundays

Table with columns for stop names, departure times (dep), arrival times (arr), and notes. Includes routes like Cribbs Causeway, Frenchay Campus, Bristol City Centre, and Hengrove Park. Notes indicate part of the journey operates in the morning of the following day.

Notes: * - Part of all of this journey operates in the morning of the following day
§ - Time at this stop is indicative. You are advised to be at any stop several minutes before the times shown



Timetable valid from 16/05/2021 until further notice.

Direction of stops: where shown (eg: W-bound) this is the compass direction towards which the bus is pointing when it stops

Bank Holidays

Table with columns for stop names and departure times. Rows include Cribbs Causeway, Bradley Stoke, Frenchay Campus, Bristol City Centre, Bedminster, Inn's Court, and Hengrove Park.

Bank Holidays

Table with columns for stop names and departure times. Rows include Cribbs Causeway, Bradley Stoke, Frenchay Campus, Bristol City Centre, Bedminster, Inn's Court, and Hengrove Park.

Notes: § - Time at this stop is indicative. You are advised to be at any stop several minutes before the times shown



Timetable valid from 16/05/2021 until further notice.

Direction of stops: where shown (eg: W-bound) this is the compass direction towards which the bus is pointing when it stops

Bank Holidays

Table with columns for stop names and departure times for various days. Includes stops like Cribbs Causeway, Patchway, Bradley Stoke, Frenchay Campus, Bristol City Centre, Bedminster, Inn's Court, and Hengrove Park.

Bank Holidays

Table with columns for stop names and departure times for various days. Includes stops like Cribbs Causeway, Patchway, Bradley Stoke, Frenchay Campus, Bristol City Centre, Bedminster, Inn's Court, and Hengrove Park.

Notes: § - Time at this stop is indicative. You are advised to be at any stop several minutes before the times shown

**m1****Cribbs Causeway - Bristol Centre - Hengrove**

HCT Group

Timetable valid from 16/05/2021 until further notice.

Direction of stops: where shown (eg: W-bound) this is the compass direction towards which the bus is pointing when it stops

Bank Holidays

	Notes	*	*	*	*		
Cribbs Causeway, Bus Station (Stop E)	dep	2230	2250	2310	2330	2350	0010
§ Patchway, Fir Tree Close (NE-bound)		2232	2252	2312	2332	2352	0012
§ Patchway, Fire Station (NE-bound)		2233	2253	2313	2333	2353	0013
§ Patchway, Aztec West Roundabout (Stop A)		2236	2256	2316	2336	2356	0016
Bradley Stoke, Patchway Brook (SE-bound)		2238	2258	2318	2338	2358	0018
§ Bradley Stoke, Willow Brook (S-bound)		2239	2259	2319	2339	2359	0019
§ Bradley Stoke, Webbs Wood (SE-bound)		2241	2301	2321	2341	0001	0021
§ Great Stoke, Great Meadow (SE-bound)		2242	2302	2322	2342	0002	0022
§ Great Stoke, Great Stoke (S-bound)		2244	2304	2324	2344	0004	0024
§ Harry Stoke, Harry Stoke (S-bound)		2247	2307	2327	2347	0007	0027
§ Harry Stoke, UWE The Gardens (S-bound)		2249	2309	2329	2349	0009	0029
Frenchay, Frenchay Campus (Stop E)		2250	2310	2330	2350	0010	0030
§ Frenchay, Stoke Park (S-bound)		2251	2311	2331	2351	0011	0031
§ Broomhill, Begbrook (E-bound)		2252	2312	2332	2352	0012	0032
§ Cabot Circus, Cabot Circus (S2)		2302	2322	2342	0002	0022	0042
§ Broadmead, Broadmead (B2)		2303	2323	2343	0003	0023	0043
Bristol City Centre, The Centre (C1)		2304	2324	2344	0004	0024	0044
§ Bristol City Centre, Queen Square (Q1)		2305	2325	2345	0005	0025	0045
§ Redcliffe, Redcliff Hill (R1)		2307	2327	2347	0007	0027	0047
Bedminster, Bedminster Parade (SW-bound)		2309	2329	2349	0009	0029	0049
§ Bedminster, Dalby Avenue (S-bound)		2310	2330	2350	0010	0030	0050
§ Bedminster, West Street (SW-bound)		2312	2332	2352	0012	0032	0052
Bedminster, Parson Street Stn (S-bound)		2314	2334	2354	0014	0034	0054
§ Novers Park, Novers Lane (NE-bound)		2318	2338	2358	0018	0038	0058
Inn's Court, Inns Court (E-bound)		2320	2340	0000	0020	0040	0100
§ Filwood Park, Filwood Broadway (E-bound)		2321	2341	0001	0021	0041	0101
§ Hengrove Park, Alverstoke (S-bound)		2323	2343	0003	0023	0043	0103
§ Whitchurch, Paddock Gardens (S-bound)		2326	2346	0006	0026	0046	0106
Hengrove Park, Hengrove Park (E-bound)	arr	2329	2349	0009	0029	0049	0109

Notes: * - Part or all of this journey operates in the morning of the following day

§ - Time at this stop is indicative. You are advised to be at any stop several minutes before the times shown

**m1****Hengrove - Bristol Centre - Cribbs Causeway**

HCT Group

Timetable valid from 16/05/2021 until further notice.

Direction of stops: where shown (eg: W-bound) this is the compass direction towards which the bus is pointing when it stops

Mondays to Fridays

Hengrove Park, Hengrove Park (E-bound)	dep	0600	0615	0630	0645	0700	0710	0720	0730	0740	0750	0800	0810	0820	0830	0840	0850	0900	0910
§ Whitchurch, Paddock Gardens (N-bound)		0602	0617	0632	0647	0702	0712	0722	0732	0742	0752	0802	0812	0822	0832	0842	0852	0902	0912
§ Hengrove Park, Alverstoke (N-bound)		0605	0620	0635	0650	0706	0716	0726	0736	0746	0756	0806	0816	0826	0836	0846	0856	0906	0916
§ Filwood Park, Filwood Broadway (W-bound)		0607	0622	0637	0652	0708	0718	0728	0738	0748	0758	0808	0818	0828	0838	0848	0858	0908	0917
Inn's Court, Inns Court (W-bound)		0609	0624	0639	0654	0710	0720	0730	0740	0750	0800	0810	0820	0830	0840	0850	0900	0909	0919
§ Novers Park, Novers Lane (SW-bound)		0609	0624	0639	0654	0711	0721	0731	0741	0751	0801	0811	0821	0831	0841	0851	0901	0910	0920
Bedminster, Parson Street Stn (NW-bound)		0614	0629	0644	0659	0717	0727	0737	0747	0757	0807	0817	0827	0837	0847	0857	0906	0915	0925
§ Bedminster, East Street (E-bound)		0617	0632	0647	0702	0721	0731	0741	0751	0801	0811	0821	0831	0841	0851	0901	0910	0919	0929
Bedminster, Bedminster Parade (NE-bound)		0619	0634	0649	0704	0723	0733	0743	0753	0803	0813	0823	0833	0843	0853	0903	0913	0922	0932
§ Redcliffe, Redcliff Hill (R2)		0620	0635	0650	0706	0725	0735	0745	0755	0805	0815	0825	0835	0845	0855	0905	0915	0924	0934
§ Bristol City Centre, Queen Square (Q2)		0623	0638	0653	0710	0729	0739	0749	0759	0809	0819	0829	0839	0849	0859	0909	0919	0928	0938
Bristol City Centre, The Centre (C2)		0625	0640	0655	0712	0731	0741	0751	0801	0811	0821	0831	0841	0851	0901	0911	0921	0930	0940
§ Broadmead, Broadmead (B1)		0625	0640	0655	0712	0731	0741	0751	0801	0811	0821	0831	0841	0851	0901	0911	0921	0930	0940
§ Cabot Circus, Cabot Circus (S1)		0626	0641	0656	0714	0733	0743	0753	0803	0813	0823	0833	0843	0853	0903	0913	0923	0932	0942
§ Broomhill, Begbrook (W-bound)		0635	0650	0705	0725	0744	0754	0804	0814	0824	0834	0844	0854	0904	0914	0924	0933	0942	0952
§ Frenchay, Stoke Park (N-bound)		0636	0651	0706	0726	0745	0755	0805	0815	0825	0835	0845	0855	0905	0914	0924	0934	0943	0953
Frenchay, Frenchay Campus (Stop E)		0638	0653	0708	0728	0747	0757	0807	0817	0827	0837	0847	0857	0907	0916	0926	0936	0945	0955
§ Harry Stoke, UWE The Gardens (N-bound)		0638	0653	0708	0728	0747	0757	0807	0817	0827	0837	0847	0857	0907	0916	0926	0936	0945	0955
§ Harry Stoke, Harry Stoke (N-bound)		0640	0655	0710	0730	0749	0759	0809	0819	0829	0839	0849	0859	0909	0918	0928	0938	0947	0957
§ Great Stoke, Great Stoke (N-bound)		0642	0657	0714	0734	0753	0803	0813	0823	0833	0843	0853	0903	0912	0921	0931	0941	0950	1000
§ Great Stoke, Great Meadow (NW-bound)		0643	0658	0715	0735	0754	0804	0814	0824	0834	0844	0854	0904	0913	0922	0932	0942	0951	1001
§ Great Stoke, Webbs Wood (NW-bound)		0644	0659	0716	0736	0755	0805	0815	0825	0835	0845	0855	0905	0914	0923	0933	0943	0952	1002
§ Bradley Stoke, Willow Brook (N-bound)		0646	0701	0719	0739	0758	0808	0818	0828	0838	0848	0858	0908	0916	0925	0935	0945	0954	1004
Bradley Stoke, Patchway Brook (NW-bound)		0648	0703	0721	0741	0800	0810	0820	0830	0840	0850	0900	0910	0918	0927	0937	0947	0956	1006
§ Patchway, Aztec West Roundabout (Stop B)		0649	0704	0722	0742	0801	0811	0821	0831	0841	0851	0901	0911	0919	0928	0938	0948	0957	1007
§ Patchway, Fire Station (SW-bound)		0652	0708	0726	0746	0805	0815	0825	0835	0845	0855	0905	0915	0923	0932	0942	0952	1001	1011
§ Patchway, Fir Tree Close (SW-bound)		0653	0710	0728	0748	0807	0817	0827	0837	0847	0857	0906	0916	0924	0933	0943	0953	1002	1012
Cribbs Causeway, Bus Station (Stop E)	arr	0656	0713	0731	0751	0810	0820	0830	0840	0850	0900	0909	0919	0927	0936	0946	0956	1005	1015

Notes: § - Time at this stop is indicative. You are advised to be at any stop several minutes before the times shown



m1

Hengrove - Bristol Centre - Cribbs Causeway

HCT Group

Timetable valid from 16/05/2021 until further notice.

Direction of stops: where shown (eg: W-bound) this is the compass direction towards which the bus is pointing when it stops

Mondays to Fridays

Table with columns for stop names and departure times from 0920 to 1025. Includes stops like Hengrove Park, Inn's Court, Bedminster, and Cribbs Causeway.

Mondays to Fridays

Table with columns for stop names and departure times from 1220 to 1325. Includes stops like Hengrove Park, Inn's Court, Bedminster, and Cribbs Causeway.

Mondays to Fridays

Table with columns for stop names and departure times from 1520 to 1626. Includes stops like Hengrove Park, Inn's Court, Bedminster, and Cribbs Causeway.

Notes: § - Time at this stop is indicative. You are advised to be at any stop several minutes before the times shown



Timetable valid from 16/05/2021 until further notice.

Direction of stops: where shown (eg: W-bound) this is the compass direction towards which the bus is pointing when it stops

Mondays to Fridays

Table with columns for stop names and departure times (1820-0042). Includes notes for specific stops like 'dep' and 'arr'.

Mondays to Fridays

Table with columns for stop names and departure times (0005-0102). Includes notes for specific stops like 'dep' and 'arr'.

Notes: * - Part or all of this journey operates in the morning of the following day
§ - Time at this stop is indicative. You are advised to be at any stop several minutes before the times shown



m1

Hengrove - Bristol Centre - Cribbs Causeway

HCT Group

Timetable valid from 16/05/2021 until further notice.

Direction of stops: where shown (eg: W-bound) this is the compass direction towards which the bus is pointing when it stops

Saturdays

Hengrove Park, Hengrove Park (E-bound)	dep	0600	0630	0700	0720	0740	0800	0820	0840	0855	0910	0925	—	0940	—	0955	—	1010	—
§ Whitchurch, Paddock Gardens (N-bound)		0602	0632	0702	0722	0742	0802	0822	0842	0857	0912	0927	—	0942	—	0957	—	1012	—
§ Hengrove Park, Alverstoke (N-bound)		0605	0635	0705	0725	0745	0805	0825	0845	0900	0916	0931	—	0946	—	1001	—	1016	—
§ Filwood Park, Filwood Broadway (W-bound)		0607	0637	0707	0727	0747	0807	0827	0847	0902	0918	0933	—	0948	—	1003	—	1018	—
Inn's Court, Inns Court (W-bound)		0609	0639	0709	0729	0749	0809	0829	0849	0904	0920	0935	—	0950	—	1005	—	1020	—
§ Novers Park, Novers Lane (SW-bound)		0609	0639	0709	0729	0749	0809	0829	0849	0905	0921	0936	—	0951	—	1006	—	1021	—
Bedminster, Parson Street Stn (NW-bound)		0614	0644	0714	0734	0754	0814	0834	0854	0910	0926	0941	0949	0956	1004	1011	1019	1026	—
§ Bedminster, East Street (E-bound)		0617	0647	0717	0737	0757	0817	0837	0857	0914	0930	0945	0953	1000	1008	1015	1023	1030	—
Bedminster, Bedminster Parade (NE-bound)		0619	0649	0719	0739	0759	0819	0839	0859	0917	0933	0948	0956	1003	1011	1018	1026	1033	—
§ Redcliffe, Redcliff Hill (R2)		0620	0650	0720	0740	0800	0820	0840	0900	0918	0934	0949	0957	1004	1012	1019	1027	1034	—
§ Bristol City Centre, Queen Square (Q2)		0623	0653	0723	0743	0803	0823	0843	0903	0922	0938	0953	1001	1008	1016	1023	1031	1038	—
Bristol City Centre, The Centre (C2)		0625	0655	0725	0745	0805	0825	0845	0905	0924	0940	0955	1003	1010	1018	1025	1033	1040	1048
§ Broadmead, Broadmead (B1)		0625	0655	0725	0745	0805	0825	0845	0905	0924	0940	0955	1003	1010	1018	1025	1033	1040	1048
§ Cabot Circus, Cabot Circus (S1)		0626	0656	0726	0746	0806	0826	0846	0907	0926	0942	0957	1005	1012	1020	1027	1035	1042	1050
§ Broomhill, Begbrook (W-bound)		0635	0705	0735	0755	0815	0835	0855	0918	0937	0953	1008	1016	1023	1031	1038	1046	1053	1101
§ Frenchay, Stoke Park (N-bound)		0636	0706	0736	0756	0816	0836	0856	0919	0938	0954	1009	1017	1024	1032	1039	1047	1054	1102
Frenchay, Frenchay Campus (Stop E)		0638	0708	0738	0758	0818	0838	0858	0921	0940	0956	1011	1019	1026	1034	1041	1049	1056	1104
§ Harry Stoke, UWE The Gardens (N-bound)		0638	0708	0738	0758	0818	0838	0858	0921	0940	0956	1011	—	1026	—	1041	—	1056	—
§ Harry Stoke, Harry Stoke (N-bound)		0640	0710	0740	0800	0820	0840	0900	0923	0942	0958	1013	—	1028	—	1043	—	1058	—
§ Great Stoke, Great Stoke (N-bound)		0642	0712	0742	0802	0822	0842	0902	0926	0945	1001	1016	—	1031	—	1046	—	1101	—
§ Great Stoke, Great Meadow (NW-bound)		0643	0713	0743	0803	0823	0843	0903	0927	0946	1002	1017	—	1032	—	1047	—	1102	—
§ Great Stoke, Webbs Wood (NW-bound)		0644	0714	0744	0804	0824	0844	0904	0928	0947	1003	1018	—	1033	—	1048	—	1103	—
§ Bradley Stoke, Willow Brook (N-bound)		0646	0716	0746	0806	0826	0846	0906	0930	0949	1005	1020	—	1035	—	1050	—	1105	—
Bradley Stoke, Patchway Brook (NW-bound)		0648	0718	0748	0808	0828	0848	0908	0932	0951	1007	1022	—	1037	—	1052	—	1107	—
§ Patchway, Aztec West Roundabout (Stop B)		0649	0719	0749	0809	0829	0849	0909	0933	0952	1008	1023	—	1038	—	1053	—	1108	—
§ Patchway, Fire Station (SW-bound)		0651	0721	0752	0812	0832	0852	0913	0937	0956	1012	1027	—	1042	—	1057	—	1112	—
§ Patchway, Fir Tree Close (SW-bound)		0653	0723	0753	0813	0833	0853	0914	0938	0957	1013	1028	—	1043	—	1058	—	1113	—
Cribbs Causeway, Bus Station (Stop E)	arr	0655	0725	0755	0816	0836	0856	0917	0941	1000	1016	1031	—	1046	—	1101	—	1116	—

Saturdays

Hengrove Park, Hengrove Park (E-bound)	dep	1025	—	1040	—	1055	—	1110	—	1125	—	1140	—	1155	—	1210	—	1225	—
§ Whitchurch, Paddock Gardens (N-bound)		1027	—	1042	—	1057	—	1112	—	1127	—	1142	—	1157	—	1212	—	1227	—
§ Hengrove Park, Alverstoke (N-bound)		1031	—	1046	—	1101	—	1116	—	1131	—	1146	—	1201	—	1216	—	1231	—
§ Filwood Park, Filwood Broadway (W-bound)		1033	—	1048	—	1103	—	1118	—	1133	—	1148	—	1203	—	1218	—	1233	—
Inn's Court, Inns Court (W-bound)		1035	—	1050	—	1105	—	1120	—	1135	—	1150	—	1205	—	1220	—	1235	—
§ Novers Park, Novers Lane (SW-bound)		1036	—	1051	—	1106	—	1121	—	1136	—	1151	—	1206	—	1221	—	1236	—
Bedminster, Parson Street Stn (NW-bound)		1041	—	1056	—	1111	—	1126	—	1141	—	1156	—	1211	—	1226	—	1241	—
§ Bedminster, East Street (E-bound)		1045	—	1100	—	1115	—	1130	—	1145	—	1200	—	1215	—	1230	—	1245	—
Bedminster, Bedminster Parade (NE-bound)		1048	—	1103	—	1118	—	1133	—	1148	—	1203	—	1218	—	1233	—	1248	—
§ Redcliffe, Redcliff Hill (R2)		1049	—	1104	—	1119	—	1134	—	1149	—	1204	—	1219	—	1234	—	1249	—
§ Bristol City Centre, Queen Square (Q2)		1053	—	1108	—	1123	—	1138	—	1153	—	1208	—	1223	—	1238	—	1253	—
Bristol City Centre, The Centre (C2)		1055	1103	1110	1118	1125	1133	1140	1148	1155	1203	1210	1218	1225	1233	1240	1248	1255	1303
§ Broadmead, Broadmead (B1)		1055	1103	1110	1118	1125	1133	1140	1148	1155	1203	1210	1218	1225	1233	1240	1248	1255	1303
§ Cabot Circus, Cabot Circus (S1)		1057	1105	1112	1120	1127	1135	1142	1150	1157	1205	1212	1220	1227	1235	1242	1250	1257	1305
§ Broomhill, Begbrook (W-bound)		1108	1116	1123	1131	1138	1146	1153	1201	1208	1216	1223	1231	1238	1246	1253	1301	1308	1316
§ Frenchay, Stoke Park (N-bound)		1109	1117	1124	1132	1139	1147	1154	1202	1209	1217	1224	1232	1239	1247	1254	1302	1309	1317
Frenchay, Frenchay Campus (Stop E)		1111	1119	1126	1134	1141	1149	1156	1204	1211	1219	1226	1234	1241	1249	1256	1304	1311	1319
§ Harry Stoke, UWE The Gardens (N-bound)		1111	—	1126	—	1141	—	1156	—	1211	—	1226	—	1241	—	1256	—	1311	—
§ Harry Stoke, Harry Stoke (N-bound)		1113	—	1128	—	1143	—	1158	—	1213	—	1228	—	1243	—	1258	—	1313	—
§ Great Stoke, Great Stoke (N-bound)		1116	—	1131	—	1146	—	1201	—	1216	—	1231	—	1246	—	1301	—	1316	—
§ Great Stoke, Great Meadow (NW-bound)		1117	—	1132	—	1147	—	1202	—	1217	—	1232	—	1247	—	1302	—	1317	—
§ Great Stoke, Webbs Wood (NW-bound)		1118	—	1133	—	1148	—	1203	—	1218	—	1233	—	1248	—	1303	—	1318	—
§ Bradley Stoke, Willow Brook (N-bound)		1120	—	1135	—	1150	—	1205	—	1220	—	1235	—	1250	—	1305	—	1320	—
Bradley Stoke, Patchway Brook (NW-bound)		1122	—	1137	—	1152	—	1207	—	1222	—	1237	—	1252	—	1307	—	1322	—
§ Patchway, Aztec West Roundabout (Stop B)		1123	—	1138	—	1153	—	1208	—	1223	—	1238	—	1253	—	1308	—	1323	—
§ Patchway, Fire Station (SW-bound)		1127	—	1142	—	1157	—	1212	—	1227	—	1242	—	1257	—	1312	—	1327	—
§ Patchway, Fir Tree Close (SW-bound)		1128	—	1143	—	1158	—	1213	—	1228	—	1243	—	1258	—	1313	—	1328	—
Cribbs Causeway, Bus Station (Stop E)	arr	1131	—	1146	—	1201	—	1216	—	1231	—	1246	—	1301	—	1316	—	1331	—

Saturdays

Hengrove Park, Hengrove Park (E-bound)	dep	1240	—	1255	—	1310	—	1325	—	1340	—	1355	—	1410	—	1425	—	1440	—
§ Whitchurch, Paddock Gardens (N-bound)		1242	—	1257	—	1312	—	1327	—	1342	—	1357	—	1412	—	1427	—	1442	—
§ Hengrove Park, Alverstoke (N-bound)		1246	—	1301	—	1316	—	1331	—	1346	—	1401	—	1416	—	1431	—	1446	—
§ Filwood Park, Filwood Broadway (W-bound)		1248	—	1303	—	1318	—	1333	—	1348	—	1403	—	1418	—	1433	—	1448	—
Inn's Court, Inns Court (W-bound)		1250	—	1305	—	1320	—	1335	—	1350	—	1405	—	1420	—	1435	—	1450	—
§ Novers Park, Novers Lane (SW-bound)		1251	—	1306	—	1321	—	1336	—	1351	—	1406	—	1421	—	1436	—	1451	—
Bedminster, Parson Street Stn (NW-bound)		1256	—	1311	—	1326	—	1341	—	1356	—	1411	—	1426	—	1441	—	1456	—
§ Bedminster, East Street (E-bound)		1300	—	1315	—	1330	—	1345	—	1400	—	1415	—	1430	—	1445	—	1500	—
Bedminster, Bedminster Parade (NE-bound)		1303	—	1318	—	1333	—	1348	—	1403	—	1418	—	1433	—	1448	—	1503	—
§ Redcliffe, Redcliff Hill (R2)		1304	—	1319	—	1334	—	1349	—	1404	—	1419	—	1434	—	1449	—	1504	—
§ Bristol City Centre, Queen Square (Q2)		1308	—	1323	—	1338	—	1353	—	1408	—	1423	—	1438	—	1453	—	1508	—
Bristol City Centre, The Centre (C2)		1310	1318	1325	1333	1340	1348	1355	1403	1410	1418	1425	1433	1440	1448	1455	1503	1510	1518
§ Broadmead, Broadmead (B1)		1310	1318	1325	1333	1340	1348	1355	1403	1410	1418	1425	1433	1440	1448	1455	1503	1510	1518
§ Cabot Circus, Cabot Circus (S1)		1312	1320	1327	1335	1342	1												



m1

Hengrove - Bristol Centre - Cribbs Causeway

HCT Group

Timetable valid from 16/05/2021 until further notice.

Direction of stops: where shown (eg: W-bound) this is the compass direction towards which the bus is pointing when it stops

Saturdays

Table with 14 columns representing departure times and 14 rows of bus routes including Hengrove Park, Bristol City Centre, and Cribbs Causeway.

Saturdays

Table with 14 columns representing departure times and 14 rows of bus routes including Hengrove Park, Bristol City Centre, and Cribbs Causeway.

Saturdays

Table with 14 columns representing departure times and 14 rows of bus routes including Hengrove Park, Bristol City Centre, and Cribbs Causeway.

Notes: § - Time at this stop is indicative. You are advised to be at any stop several minutes before the times shown

**m1****Hengrove - Bristol Centre - Cribbs Causeway**

HCT Group

Timetable valid from 16/05/2021 until further notice.

Direction of stops: where shown (eg: W-bound) this is the compass direction towards which the bus is pointing when it stops

Saturdays

	Notes	*	*	*	*
Hengrove Park, Hengrove Park (E-bound)	dep	2305	2325	2345	0005
§ Whitchurch, Paddock Gardens (N-bound)		2307	2327	2347	0007
§ Hengrove Park, Alverstoke (N-bound)		2310	2330	2350	0010
§ Filwood Park, Filwood Broadway (W-bound)		2312	2332	2352	0012
Inn's Court, Inns Court (W-bound)		2314	2334	2354	0014
§ Novers Park, Novers Lane (SW-bound)		2314	2334	2354	0014
Bedminster, Parson Street Stn (NW-bound)		2319	2339	2359	0019
§ Bedminster, East Street (E-bound)		2322	2342	0002	0022
Bedminster, Bedminster Parade (NE-bound)		2324	2344	0004	0024
§ Redcliffe, Redcliff Hill (R2)		2325	2345	0005	0025
§ Bristol City Centre, Queen Square (Q2)		2328	2348	0008	0028
Bristol City Centre, The Centre (C2)		2330	2350	0010	0030
§ Broadmead, Broadmead (B1)		2330	2350	0010	0030
§ Cabot Circus, Cabot Circus (S1)		2331	2351	0011	0031
§ Broomhill, Begbrook (W-bound)		2340	0000	0020	0040
§ Frenchay, Stoke Park (N-bound)		2341	0001	0021	0041
Frenchay, Frenchay Campus (Stop E)		2343	0003	0023	0043
§ Harry Stoke, UWE The Gardens (N-bound)		2343	0003	0023	0043
§ Harry Stoke, Harry Stoke (N-bound)		2345	0005	0025	0045
§ Great Stoke, Great Stoke (N-bound)		2348	0008	0028	0048
§ Great Stoke, Great Meadow (NW-bound)		2349	0009	0029	0049
§ Great Stoke, Webbs Wood (NW-bound)		2350	0010	0030	0050
§ Bradley Stoke, Willow Brook (N-bound)		2352	0012	0032	0052
Bradley Stoke, Patchway Brook (NW-bound)		2354	0014	0034	0054
§ Patchway, Aztec West Roundabout (Stop B)		2355	0015	0035	0055
§ Patchway, Fire Station (SW-bound)		2358	0018	0038	0058
§ Patchway, Fir Tree Close (SW-bound)		2359	0019	0039	0059
Cribbs Causeway, Bus Station (Stop E)	arr	0002	0022	0042	0102

Sundays

Hengrove Park, Hengrove Park (E-bound)	dep	0600	0630	0700	0720	0740	0800	0820	0840	0900	0920	0940	—	1000	—	1020	—	1040	—
§ Whitchurch, Paddock Gardens (N-bound)		0602	0632	0702	0722	0742	0802	0822	0842	0902	0922	0942	—	1002	—	1022	—	1042	—
§ Hengrove Park, Alverstoke (N-bound)		0605	0635	0705	0725	0745	0805	0825	0845	0905	0925	0945	—	1005	—	1025	—	1045	—
§ Filwood Park, Filwood Broadway (W-bound)		0607	0637	0707	0727	0747	0807	0827	0847	0907	0927	0947	—	1007	—	1027	—	1047	—
Inn's Court, Inns Court (W-bound)		0609	0639	0709	0729	0749	0809	0829	0849	0909	0929	0949	—	1009	—	1029	—	1049	—
§ Novers Park, Novers Lane (SW-bound)		0609	0639	0709	0729	0749	0809	0829	0849	0910	0930	0950	—	1010	—	1030	—	1050	—
Bedminster, Parson Street Stn (NW-bound)		0614	0644	0714	0734	0754	0814	0834	0854	0916	0936	0956	—	1016	—	1036	—	1056	—
§ Bedminster, East Street (E-bound)		0617	0647	0717	0737	0757	0817	0837	0857	0920	0940	1000	—	1020	—	1040	—	1100	—
Bedminster, Bedminster Parade (NE-bound)		0619	0649	0719	0739	0759	0819	0839	0859	0922	0942	1002	—	1022	—	1042	—	1102	—
§ Redcliffe, Redcliff Hill (R2)		0620	0650	0720	0740	0800	0820	0840	0900	0923	0943	1003	—	1023	—	1043	—	1103	—
§ Bristol City Centre, Queen Square (Q2)		0623	0653	0723	0743	0803	0823	0843	0903	0927	0947	1007	—	1027	—	1047	—	1107	—
Bristol City Centre, The Centre (C2)		0625	0655	0725	0745	0805	0825	0845	0905	0929	0949	1009	1019	1029	1039	1049	1059	1109	1119
§ Broadmead, Broadmead (B1)		0625	0655	0725	0745	0805	0825	0845	0905	0929	0949	1009	1019	1029	1039	1049	1059	1109	1119
§ Cabot Circus, Cabot Circus (S1)		0626	0656	0726	0746	0806	0826	0846	0907	0931	0951	1011	1021	1031	1041	1051	1101	1111	1121
§ Broomhill, Begbrook (W-bound)		0635	0705	0735	0755	0815	0835	0855	0917	0941	1001	1021	1031	1041	1051	1101	1111	1121	1131
§ Frenchay, Stoke Park (N-bound)		0636	0706	0736	0756	0816	0836	0856	0918	0942	1002	1022	1032	1042	1052	1102	1112	1122	1132
Frenchay, Frenchay Campus (Stop E)		0638	0708	0738	0758	0818	0838	0858	0920	0944	1004	1024	1034	1044	1054	1104	1114	1124	1134
§ Harry Stoke, UWE The Gardens (N-bound)		0638	0708	0738	0758	0818	0838	0858	0920	0944	1004	1024	—	1044	—	1104	—	1124	—
§ Harry Stoke, Harry Stoke (N-bound)		0640	0710	0740	0800	0820	0840	0900	0922	0946	1006	1026	—	1046	—	1106	—	1126	—
§ Great Stoke, Great Stoke (N-bound)		0642	0712	0742	0802	0822	0842	0902	0925	0949	1009	1029	—	1049	—	1109	—	1129	—
§ Great Stoke, Great Meadow (NW-bound)		0643	0713	0743	0803	0823	0843	0903	0926	0950	1010	1030	—	1050	—	1110	—	1130	—
§ Great Stoke, Webbs Wood (NW-bound)		0644	0714	0744	0804	0824	0844	0904	0927	0951	1011	1031	—	1051	—	1111	—	1131	—
§ Bradley Stoke, Willow Brook (N-bound)		0646	0716	0746	0806	0826	0846	0906	0929	0953	1013	1033	—	1053	—	1113	—	1133	—
Bradley Stoke, Patchway Brook (NW-bound)		0648	0718	0748	0808	0828	0848	0908	0931	0955	1015	1035	—	1055	—	1115	—	1135	—
§ Patchway, Aztec West Roundabout (Stop B)		0649	0719	0749	0809	0829	0849	0909	0932	0956	1016	1036	—	1056	—	1116	—	1136	—
§ Patchway, Fire Station (SW-bound)		0652	0722	0752	0812	0832	0852	0913	0936	1000	1020	1040	—	1100	—	1120	—	1140	—
§ Patchway, Fir Tree Close (SW-bound)		0653	0723	0753	0813	0833	0853	0914	0937	1001	1021	1041	—	1101	—	1121	—	1141	—
Cribbs Causeway, Bus Station (Stop E)	arr	0656	0726	0756	0816	0836	0856	0917	0940	1004	1024	1044	—	1104	—	1124	—	1144	—

Notes: * - Part or all of this journey operates in the morning of the following day

§ - Time at this stop is indicative. You are advised to be at any stop several minutes before the times shown



Timetable valid from 16/05/2021 until further notice.

Direction of stops: where shown (eg: W-bound) this is the compass direction towards which the bus is pointing when it stops

Sundays

Table with 14 columns (dep, 1100-1204) and 28 rows of bus routes including Hengrove Park, Inn's Court, Bedminster, Bristol City Centre, Frenchay, and Cribbs Causeway.

Sundays

Table with 14 columns (dep, 1400-1504) and 28 rows of bus routes including Hengrove Park, Inn's Court, Bedminster, Bristol City Centre, Frenchay, and Cribbs Causeway.

Sundays

Table with 14 columns (dep, 1700-1804) and 28 rows of bus routes including Hengrove Park, Inn's Court, Bedminster, Bristol City Centre, Frenchay, and Cribbs Causeway.

Notes: § - Time at this stop is indicative. You are advised to be at any stop several minutes before the times shown



m1

Hengrove - Bristol Centre - Cribbs Causeway

HCT Group

Timetable valid from 16/05/2021 until further notice.

Direction of stops: where shown (eg: W-bound) this is the compass direction towards which the bus is pointing when it stops

Sundays

Table with columns for stop names and departure times (dep) and arrival times (arr) for various bus routes on Sundays. Includes stops like Hengrove Park, Inn's Court, Bedminster, Bristol City Centre, Frenchay, Bradley Stoke, and Cribbs Causeway.

Bank Holidays

Table with columns for stop names and departure times (dep) and arrival times (arr) for various bus routes on Bank Holidays. Includes stops like Hengrove Park, Inn's Court, Bedminster, Bristol City Centre, Frenchay, Bradley Stoke, and Cribbs Causeway.

Notes: * - Part or all of this journey operates in the morning of the following day
§ - Time at this stop is indicative. You are advised to be at any stop several minutes before the times shown



m1

Hengrove - Bristol Centre - Cribbs Causeway

HCT Group

Timetable valid from 16/05/2021 until further notice.

Direction of stops: where shown (eg: W-bound) this is the compass direction towards which the bus is pointing when it stops

Bank Holidays

Table with columns for stop names and times. Rows include Hengrove Park, Bristol City Centre, Frenchay, and Cribbs Causeway with various time slots.

Bank Holidays

Table with columns for stop names and times. Rows include Hengrove Park, Bristol City Centre, Frenchay, and Cribbs Causeway with various time slots.

Bank Holidays

Table with columns for stop names and times. Rows include Hengrove Park, Bristol City Centre, Frenchay, and Cribbs Causeway with various time slots.

Notes: § - Time at this stop is indicative. You are advised to be at any stop several minutes before the times shown

**m1****Hengrove - Bristol Centre - Cribbs Causeway**

HCT Group

Timetable valid from 16/05/2021 until further notice.

Direction of stops: where shown (eg: W-bound) this is the compass direction towards which the bus is pointing when it stops

Bank Holidays

	Notes	*	*	*			
Hengrove Park, Hengrove Park (E-bound)	dep	2200	2220	2240	2300	2320	2340 0000
§ Whitchurch, Paddock Gardens (N-bound)		2202	2222	2242	2302	2322	2342 0002
§ Hengrove Park, Alverstoke (N-bound)		2205	2225	2245	2305	2325	2345 0005
§ Filwood Park, Filwood Broadway (W-bound)		2207	2227	2247	2307	2327	2347 0007
Inn's Court, Inns Court (W-bound)		2209	2229	2249	2309	2329	2349 0009
§ Novers Park, Novers Lane (SW-bound)		2209	2229	2249	2309	2329	2349 0009
Bedminster, Parson Street Stn (NW-bound)		2214	2234	2254	2314	2334	2354 0014
§ Bedminster, East Street (E-bound)		2217	2237	2257	2317	2337	2357 0017
Bedminster, Bedminster Parade (NE-bound)		2219	2239	2259	2319	2339	2359 0019
§ Redcliffe, Redcliff Hill (R2)		2220	2240	2300	2320	2340	0000 0020
§ Bristol City Centre, Queen Square (Q2)		2223	2243	2303	2323	2343	0003 0023
Bristol City Centre, The Centre (C2)		2225	2245	2305	2325	2345	0005 0025
§ Broadmead, Broadmead (B1)		2225	2245	2305	2325	2345	0005 0025
§ Cabot Circus, Cabot Circus (S1)		2226	2246	2306	2326	2346	0006 0026
§ Broomhill, Begbrook (W-bound)		2235	2255	2315	2335	2355	0015 0035
§ Frenchay, Stoke Park (N-bound)		2236	2256	2316	2336	2356	0016 0036
Frenchay, Frenchay Campus (Stop E)		2238	2258	2318	2338	2358	0018 0038
§ Harry Stoke, UWE The Gardens (N-bound)		2238	2258	2318	2338	2358	0018 0038
§ Harry Stoke, Harry Stoke (N-bound)		2240	2300	2320	2340	0000	0020 0040
§ Great Stoke, Great Stoke (N-bound)		2243	2303	2323	2343	0003	0023 0043
§ Great Stoke, Great Meadow (NW-bound)		2244	2304	2324	2344	0004	0024 0044
§ Great Stoke, Webbs Wood (NW-bound)		2245	2305	2325	2345	0005	0025 0045
§ Bradley Stoke, Willow Brook (N-bound)		2247	2307	2327	2347	0007	0027 0047
Bradley Stoke, Patchway Brook (NW-bound)		2249	2309	2329	2349	0009	0029 0049
§ Patchway, Aztec West Roundabout (Stop B)		2250	2310	2330	2350	0010	0030 0050
§ Patchway, Fire Station (SW-bound)		2253	2313	2333	2353	0013	0033 0053
§ Patchway, Fir Tree Close (SW-bound)		2254	2314	2334	2354	0014	0034 0054
Cribbs Causeway, Bus Station (Stop E)	arr	2257	2317	2337	2357	0017	0037 0057

Notes: * - Part or all of this journey operates in the morning of the following day

§ - Time at this stop is indicative. You are advised to be at any stop several minutes before the times shown



For times of the next departures from a particular stop you can use **traveline-txt** - by sending the SMS code to **84268**. Add the service number after the code if you just want a specific service - eg: **buctdgt 60**. The return message from **traveline-txt** will show the next three departures, and it currently costs 25p plus any message sending charge. Departure times will be real-time predictions where available, or scheduled departure times if not.

You can also get the same information by using the SMS code at www.nextbuses.mobi (only normal browsing charges apply) or through several iPhone or Android apps that offer access to **NextBuses**.

NOTE: SMS codes are different in each direction. Make sure you choose the right direction from these lists.

SMS Code	Stop Name	Street	ATCO Code
sglagta	Cribbs Causeway, Bus Station (Stop E)		0170SGP90855
sglajdt	Patchway, Fir Tree Close (NE-bound)	Highwood Road	0170SGP90848
sglptpd	Patchway, Fire Station (NE-bound)	Highwood Road	0170SGA56552
sglamwa	Patchway, Aztec West Roundabout (Stop A)	Gloucester Road	0170SGP90764
sglpwmj	Bradley Stoke, Patchway Brook (SE-bound)	Bradley Stoke Way	017000045
sglpwmt	Bradley Stoke, Willow Brook (S-bound)	Bradley Stoke Way	017000047
sgldajp	Bradley Stoke, Webbs Wood (SE-bound)	Bradley Stoke Way	0170SGP90730
sglpwppd	Great Stoke, Great Meadow (SE-bound)	Bradley Stoke Way	017000050
sglpwpj	Great Stoke, Great Stoke (S-bound)	Great Stoke Way	017000052
sglpwpt	Harry Stoke, Harry Stoke (S-bound)	Rosedown Avenue	017000054
sglawtw	Harry Stoke, UWE The Gardens (S-bound)	Coldharbour Lane	0170SGP90688
sglawmp	Frenchay, Frenchay Campus (Stop E)		0170SGP90686
sgldagd	Frenchay, Stoke Park (S-bound)	Stoke Lane	0170SGP90680
bstpidg	Broomhill, Begbrook (E-bound)		010000044
bstgwaw	Cabot Circus, Cabot Circus (S2)	Bond Street	0100BRP90363
bstgtdt	Broadmead, Broadmead (B2)	Rupert Street	0100BRP90368
bstgajm	Bristol City Centre, The Centre (C1)	Colston Avenue	0100BRP90373
bstgwja	Bristol City Centre, Queen Square (Q1)	Prince Street	0100BRP90355
bstpjmt	Redcliffe, Redcliff Hill (R1)	Redcliff Hill	010000062
bstgjам	Bedminster, Bedminster Parade (SW-bound)	Bedminster Parade	0100BRA10065
bstgawd	Bedminster, Dalby Avenue (S-bound)	Dalby Avenue	0100BRA10070
bstdtap	Bedminster, West Street (SW-bound)	West Street	0100BRA10073
bstdmjd	Bedminster, Parson Street Stn (S-bound)	West Street	0100BRA10077
bstdwdg	Novers Park, Novers Lane (NE-bound)	Novers Lane	0100BRA10154
bstgdaw	Inn's Court, Inns Court (E-bound)	Inns Court Avenue	0100BRA10324
bstgwdp	Filwood Park, Filwood Broadway (E-bound)	Creswicke Road	0100BRA10329
bstjdmd	Hengrove Park, Alverstoke (S-bound)	Bamfield	0100BRA10278
bstjdpг	Whitchurch, Paddock Gardens (S-bound)	Bamfield	0100BRA10270
bstpgma	Hengrove Park, Hengrove Park (E-bound)	Hengrove Promenade	010000008



For times of the next departures from a particular stop you can use **traveline-txt** - by sending the SMS code to **84268**. Add the service number after the code if you just want a specific service - eg: **buctdgttd 60**. The return message from **traveline-txt** will show the next three departures, and it currently costs 25p plus any message sending charge. Departure times will be real-time predictions where available, or scheduled departure times if not.

You can also get the same information by using the SMS code at www.nextbuses.mobi (only normal browsing charges apply) or through several iPhone or Android apps that offer access to **NextBuses**.

NOTE: SMS codes are different in each direction. Make sure you choose the right direction from these lists.

SMS Code	Stop Name	Street	ATCO Code
bstpgma	Hengrove Park, Hengrove Park (E-bound)	Hengrove Promenade	01000008
bstjdma	Whitchurch, Paddock Gardens (N-bound)	Bamfield	0100BRA10269
bstjdgp	Hengrove Park, Alverstoke (N-bound)	Bamfield	0100BRA10279
bstgtpg	Filwood Park, Filwood Broadway (W-bound)	Creswicke Road	0100BRA10328
bstgdat	Inn's Court, Inns Court (W-bound)	Inns Court Avenue	0100BRA10325
bstdwgw	Novers Park, Novers Lane (SW-bound)	Novers Lane	0100BRA10156
bstpadm	Bedminster, Parson Street Stn (NW-bound)	Parson Street	0100BRZ01713
bstdtwg	Bedminster, East Street (E-bound)	East Street	0100BRA10112
bstgdja	Bedminster, Bedminster Parade (NE-bound)	Bedminster Parade	0100BRA10068
bstgpaw	Redcliffe, Redcliff Hill (R2)	Redcliff Hill	0100BRA10802
bstgagd	Bristol City Centre, Queen Square (Q2)	Prince Street	0100BRX32922
bstgama	Bristol City Centre, The Centre (C2)	Colston Avenue	0100BRP90372
bstgdwa	Broadmead, Broadmead (B1)	Lewins Mead	0100BRP90342
bstpgam	Cabot Circus, Cabot Circus (S1)	Bond Street	0100BRA01798
bstpidj	Broomhill, Begbrook (W-bound)		010000045
sgldaga	Frenchay, Stoke Park (N-bound)	Stoke Lane	0170SGP90679
sglawmp	Frenchay, Frenchay Campus (Stop E)		0170SGP90686
sglawtp	Harry Stoke, UWE The Gardens (N-bound)	Coldharbour Lane	0170SGP90687
sglpwpm	Harry Stoke, Harry Stoke (N-bound)	Rosedown Avenue	017000053
sglpwpg	Great Stoke, Great Stoke (N-bound)	Great Stoke Way	017000051
sglpwpa	Great Stoke, Great Meadow (NW-bound)	Bradley Stoke Way	017000049
sglpwmw	Great Stoke, Webbs Wood (NW-bound)	Bradley Stoke Way	017000048
sglpwmp	Bradley Stoke, Willow Brook (N-bound)	Bradley Stoke Way	017000046
sglpwmg	Bradley Stoke, Patchway Brook (NW-bound)	Bradley Stoke Way	017000044
sglamwm	Patchway, Aztec West Roundabout (Stop B)	Gloucester Road	0170SGP90763
sglpwmd	Patchway, Fire Station (SW-bound)	Highwood Road	017000043
sglajdj	Patchway, Fir Tree Close (SW-bound)	Highwood Road	0170SGP90847
sglagta	Cribbs Causeway, Bus Station (Stop E)		0170SGP90855

Appendix F: Proposed Development Layout

Hoodlands Farm - Accommodation Schedule						
OMS Units	Unit Type	GA		Sub-total GA		No.
		sq	mf	sq	mf	
THC2	2B4P	882	81.9	7,938	737.1	9
THC3	3B4P	957	88.9	22,011	2,044.7	23
OMS Totals				29,949	2,781.8	32
AFFORDABLE Units						
Shared Ownership	Unit Type	GA		Sub-total GA		No.
		sq	mf	sq	mf	
THC2	2B4P	882	81.9	2,646	245.7	3
THC3	3B4P	957	88.9	2,871	266.7	3
Shared Ownership Totals				5,517	512.4	6
AFFORDABLE Units						
Social Rent Units	Unit Type	GA		Sub-total GA		No.
		sq	mf	sq	mf	
THC5	2B4P mobility unit	1005	93.4	2,010	198.8	2
THC2	2B4P	882	81.9	4,410	409.5	5
THC3	3B4P	957	88.9	4,785	444.5	5
Social Rent Totals				11,205	1,040.8	12
Affordable Totals				16,722	1,553.2	18
Site Totals				46,671	4,335.0	50

PARKING SPACE PROVISION

Allocated spaces: 87 spaces
 Visitor's parking: 10 spaces
 Substation: 1 space



- M 17.06.21 Redline boundary extended to include Hambrook Lane GA -
- L 17.06.21 Shared Ownership and Social Rent allocations revised. Sheet size changed to A1 GA -
- K 16.06.21 Road extended at plots 09/10 to allow refuse vehicle turning. VP05 relocated, additional VPs to north of PDS, cycle path increased to 3m, on curtilage parking depth increased to 5.5m. GA -
- J 15.06.21 Shared surface road from Hoodlands Road changed to road and footpath with service margin, cycle path connection added adjacent plot 42, turning head added at plot 08, bin collection points added. GA -
- I 10.06.21 Layout revised to include Secondary Access road from SW corner to eastern edge. Rear garden boundaries revised to allow greater wildlife corridor. OMS mix revised. Substation relocated. GA -
- H 03.06.21 Affordable mix updated. Terraces on northern and southern boundaries separated into semi-detached to allow access to rear gardens. Plots 15-31 reconfigured to removed shared rear access and additional plot added. Boundary to plots now defined by Heras fence. GA -
- G 01.06.21 Topo survey attached, Play park moved north. GA -
- F 31.05.21 Road layout moved to the west and margin replaced footpath. Road geometry revised at proposed access to align with engineer's drawing. VP added. Houses and parking reconfigured. GA -
- E 26.05.21 Road layout revised to run along western boundary, units replotted to run with contours where possible. GA -
- D 18.05.21 Southern access added from Crest development. Northern access blocked up. One less unit as a result. DS -
- C 06.05.21 Plot 35 changed to a 3 bed unit. DS -
- B 05.05.21 2 no. mobility units added at plots 1 & 2 to meet LA policy requirements. 2bed/3bed mix adjusted to suit. Affordable mix and locations adjusted as per email from Boklok sales. Pumping station and substation added to layout. Plots 17 to 19 pulled forward 2m. DS -
- A 26.04.21 4 no. additional plots added in place of existing house. DS -
- 21.04.21 First issue. DS -

Rev	Date	Description	Drawn	Chkd
Drawing Status				

Client

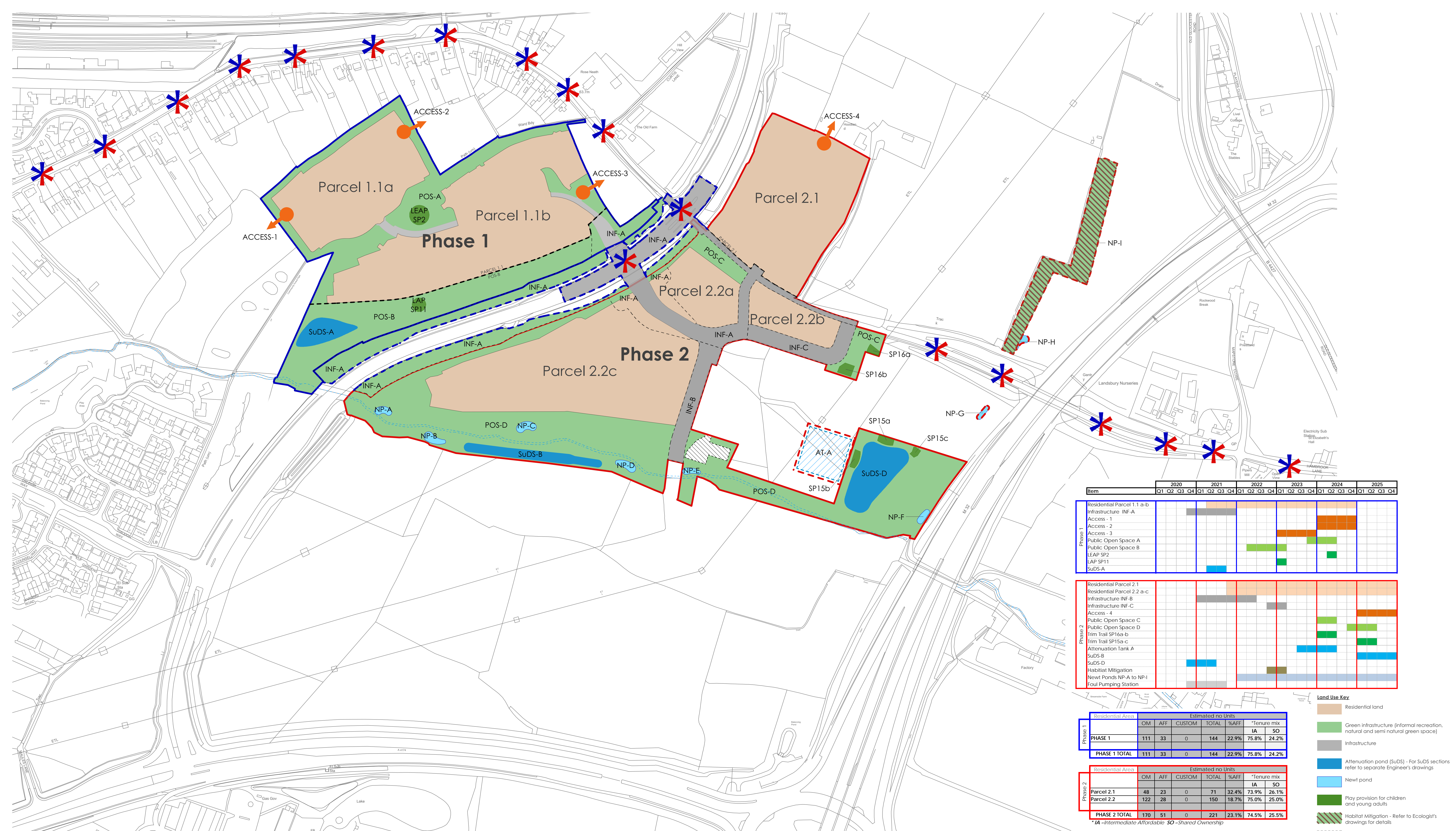
Venue Studios
 21 Calton Road
 Edinburgh, EH8 8DL
 +44 (0)131 550 6600
 www.jtp.co.uk

Project
Hoodlands Farm

Drawing Title
Site Layout

Scale @ A1 1:500 Job Ref. 01784A
 Drawing No. HDF-JTP-SW-GL-DR-A-SL-5000 Revision M
 Scale Bar 0 5 10 15 20 25m

Appendix G: Crest Development – Phase 1 & 2



Item	2020			2021			2022			2023			2024			2025				
	Q1	Q2	Q3	Q4	Q1	Q2	Q3	Q4	Q1	Q2	Q3	Q4	Q1	Q2	Q3	Q4	Q1	Q2	Q3	Q4
Phase 1																				
Residential Parcel 1.1 a-b																				
Infrastructure INF-A																				
Access - 1																				
Access - 2																				
Access - 3																				
Public Open Space A																				
Public Open Space B																				
LEAP SP2																				
LAP SP11																				
SuDS-A																				
Phase 2																				
Residential Parcel 2.1																				
Residential Parcel 2.2 a-c																				
Infrastructure INF-B																				
Infrastructure INF-C																				
Access - 4																				
Public Open Space C																				
Public Open Space D																				
Trim Trail SP16a-b																				
Trim Trail SP15a-c																				
Attenuation Tank A																				
SuDS-B																				
SuDS-D																				
Habitat Mitigation																				
New Ponds NP-A to NP-I																				
Foul Pumping Station																				

Phase	Residential Area		Estimated no Units				*Tenure mix	
	OM	AFF	CUSTOM	TOTAL	%AFF	%SO	IA	SO
Phase 1	111	33	0	144	22.9%	75.8%	24.2%	
Phase 1 TOTAL	111	33	0	144	22.9%	75.8%	24.2%	
Phase 2	48	23	0	71	32.4%	73.9%	26.1%	
Parcel 2.1	122	28	0	150	18.7%	75.0%	25.0%	
Parcel 2.2	170	51	0	221	23.1%	74.5%	25.5%	

- Land Use Key**
- Residential land
 - Green infrastructure (informal recreation, natural and semi natural green space)
 - Infrastructure
 - Attenuation pond (SuDS) - For SuDS sections refer to separate Engineers drawings
 - New pond
 - Play provision for children and young adults
 - Habitat Mitigation - Refer to Ecologist's drawings for details
 - Area reserved for foul pumping station, subject to detail RM design
 - Sub-ground attenuation tank - Refer to separate Engineers drawings for details
 - The Ham brook
 - Indicative location of highways works to be delivered inline with phase 1 and 2.
 - Indicative location of access into adjoining land (subject to detailed design) - access provided to boundary only.

NOTE: Geographic phase 1 is reliant on the implementation of the following infrastructure located within geographic phase 2:
 1. Foul water pumping station.
 2. SuDS-D required for INF-A (S278 works).
 3. INF-B required to serve the foul water pumping station.

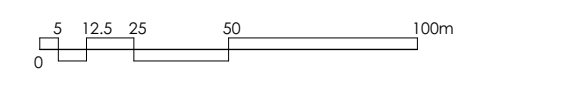
NOTE: For SuDS basins details refer to separate Engineers drawings.

NOTE: Dashed boundary indicates required infrastructure that sits outside of geographical phase.

NOTE: The timings and programme identified on this plan should not be read as absolute trigger dates. Rather, it should be treated as illustrative and is focussed on showing how the various pieces of infrastructure will be delivered in relation to each other.

Unit numbers amended inline with latest sketch/planning layout. SR 13/10/20
 Amended inline with client comments. SR 27/07/20
 Amendments By Date

Land East Of Harry Stoke South - Phase 1 and 2 Plan



DRAFT WORK IN PROGRESS

Job No/Drawing No: 13168/6202J Job Title: East of Harry Stoke
 Scale: 1:2000 Date: 04/19 Drawn: SR Drawing Title: Phase 1 and 2 Plan
 © A1

All Dimensions to be checked on site. OS Licence No: 100022432
 pad Design Ltd - The Tobacco Factory - Raleigh Road - Bristol BS3 1TF - Tel: 0117 953059 - www.pad-design.com

Appendix H: Hambrook Lane