
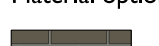


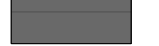




Notes:

All contractors must visit the site and be responsible for taking and checking Dimensions.  
 All construction information should be taken from figured dimensions only.  
 Any discrepancies between drawings, specifications and site conditions must be brought to the attention of the supervising officer.  
 This drawing and the works depicted are the copyright of JTP.

This drawing is for planning purposes only. It is not intended to be used for construction purposes. Whilst all reasonable efforts are used to ensure drawings are accurate, JTP accept no responsibility or liability for any reliance placed on, or use made of, this plan by anyone for purposes other than those stated above.

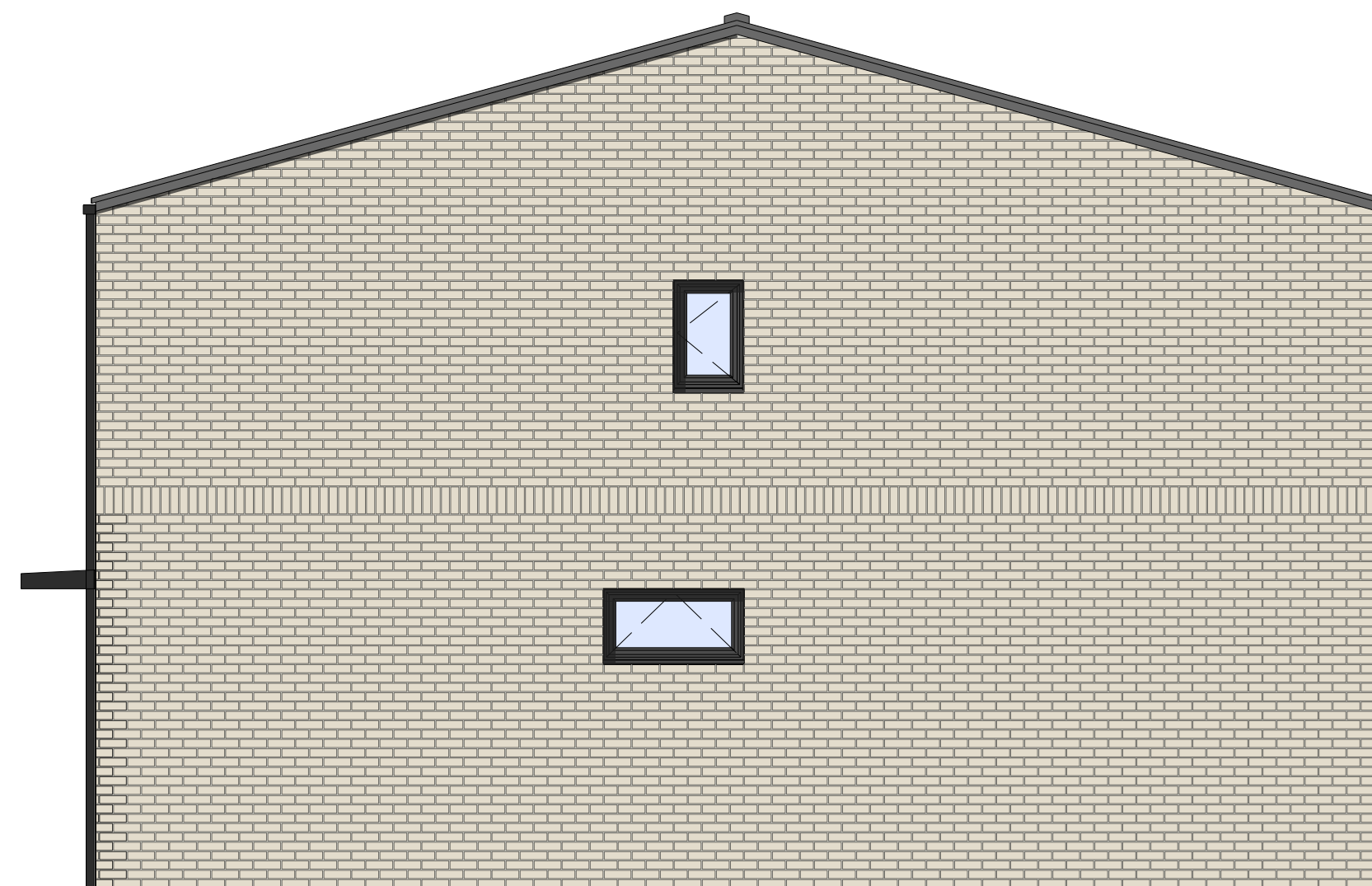
Material Key

- Material option A  
 Buff multi facing brick cladding with light grey mortar
- Material option B  
 Grey multi facing brick cladding with grey mortar
-  Accent panel to entrance: Soltherm render panel in Regency Blue
-  Accent panel to entrance: Soltherm render panel in Pale Orange
-  Ceramic slate roof tile in slate grey
-  Flush sash uPVC windows in an anthracite grey finish on the outside and white on the inside
-  Aluminium gutters and down pipes finished in PPC anthracite grey

Note: Please refer to drawing HST-JTP-SW-GL-DR-A-SL-5004 for material locations.



Front Elevation - Brick Option A



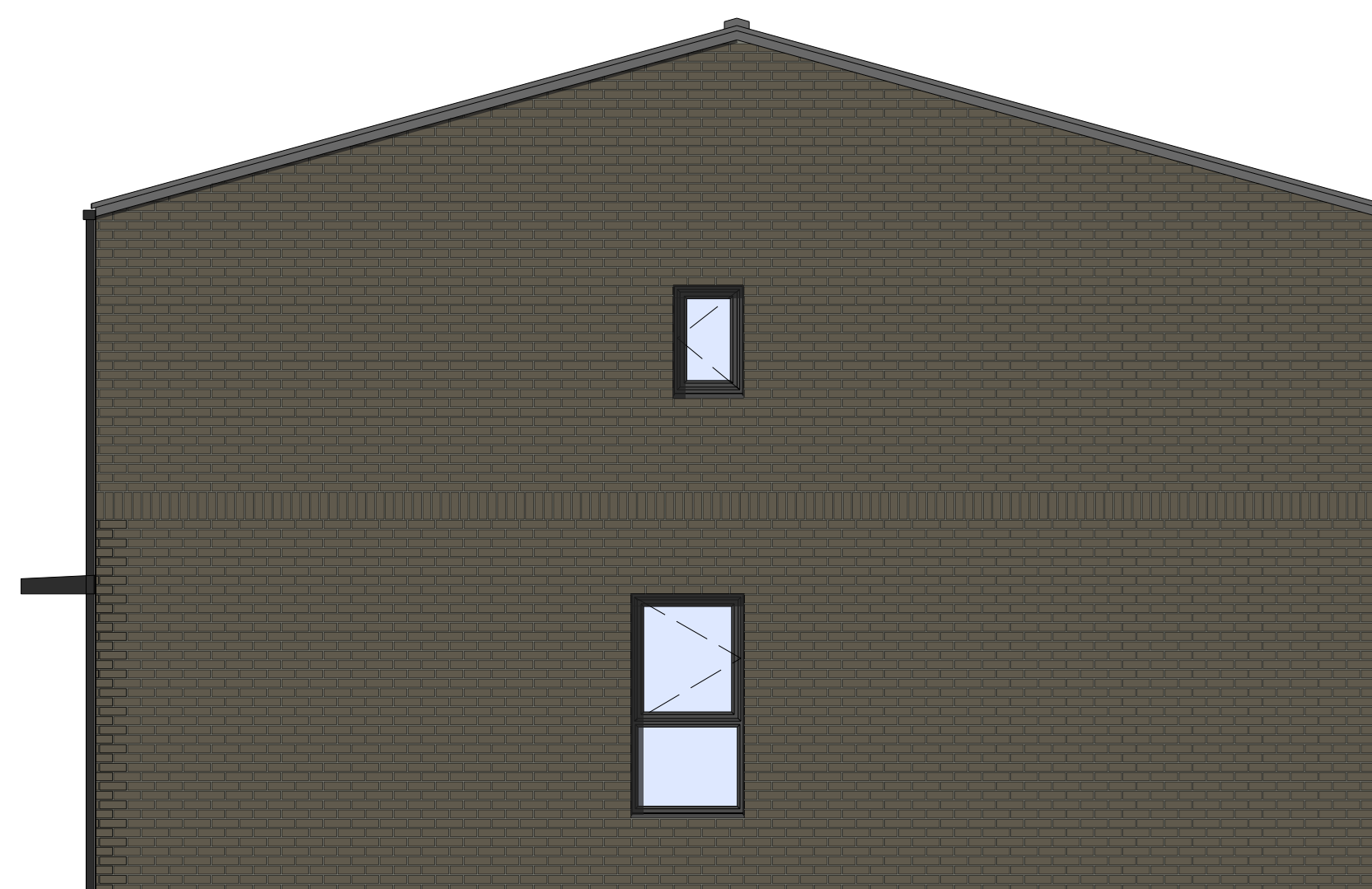
Side Elevation - Brick Option A



Rear Elevation - Brick Option A



Front Elevation - Brick Option B

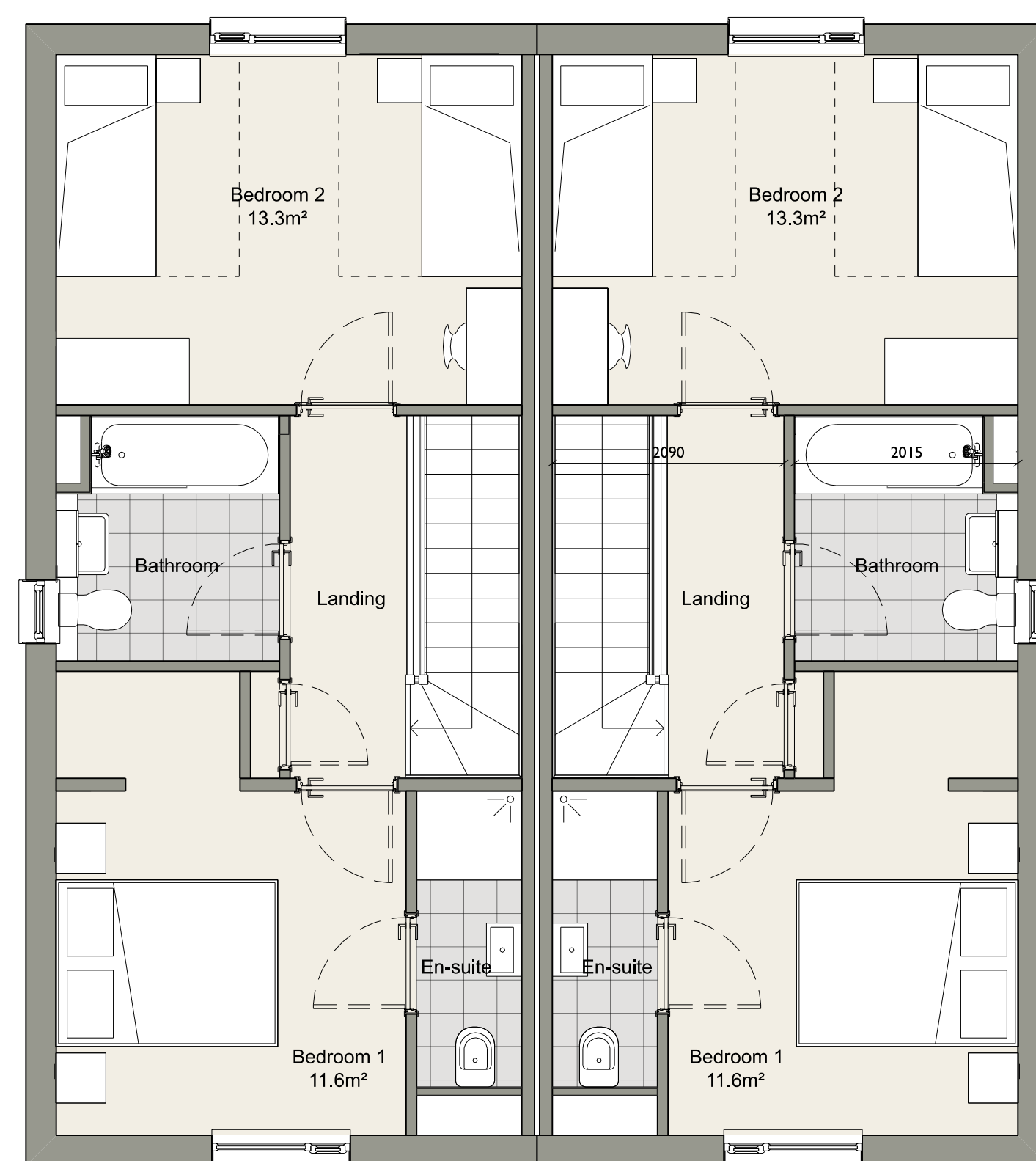


Side Elevation - Brick Option B

Full height gable window to plot 43 only.



Ground Floor



First Floor

P3	07.07.21	Planning submission updates.	SC	GA
P2	02.07.21	Planning submission updates.	SC	GA
P1	30.06.21	First issue for planning.	SC	GA

Rev	Date	Description	Drawn	Chkd

Drawing Status

PLANNING

Client



Project

Hoodlands Farm

Drawing Title

Housetype THC2  
OMS FiB

Scale @ A1 1:50 Job Ref. 01784A

Drawing No. HST-JTP-HC2-ZZ-DR-A-GA-5101 Revision P3

