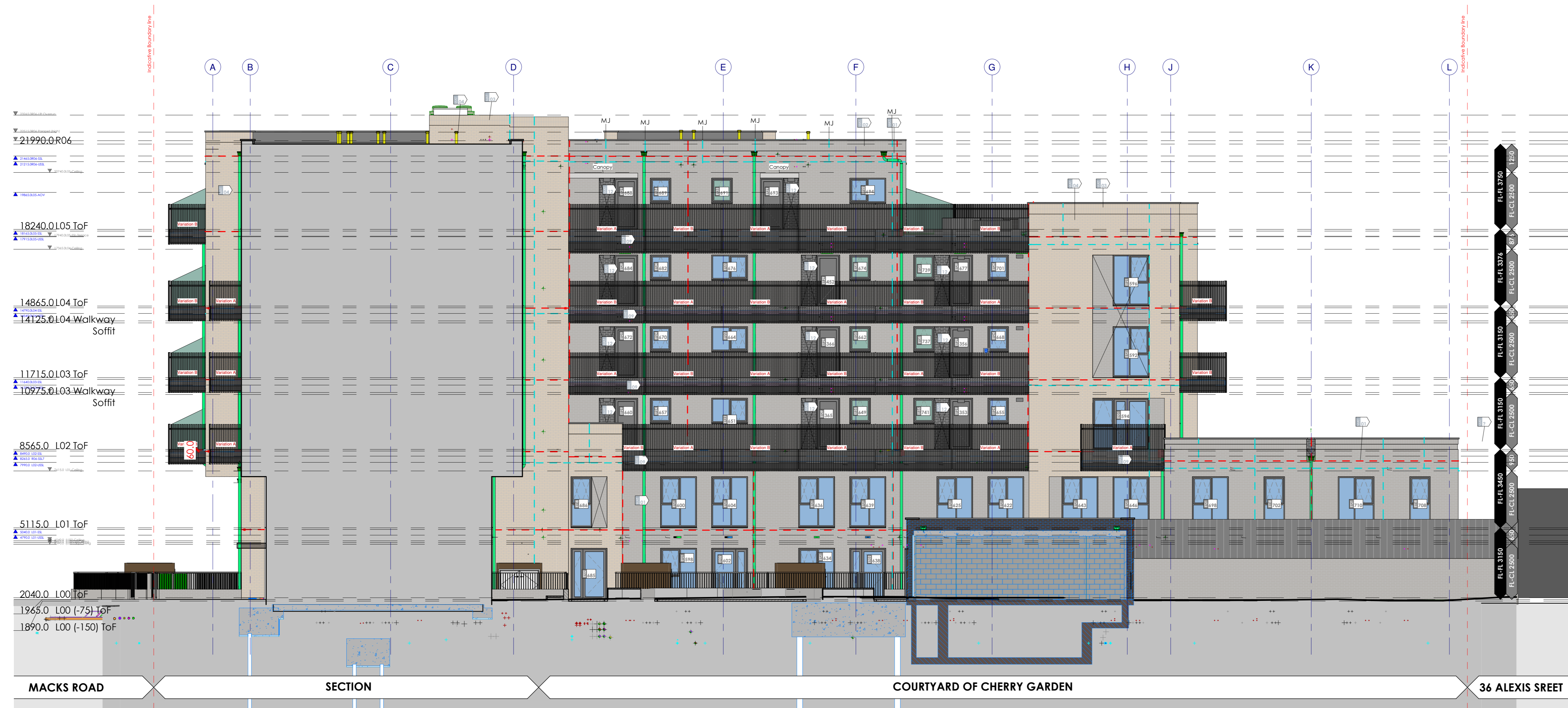


Note: All dimensions to be checked on site before commencement of the work. If the drawing exceeds the quantities only the quantities are to be dimensioned. Once work has commenced, the drawing is copyright. Revisions prior to commencement refer to the drawing. Revisions after commencement refer to the drawing.

| rev | date | description | drawn | check |
|-----|----------|--|-------|-------|
| 1 | 12.02.21 | Issued for Construction. | ASM | SL |
| 2 | 05.03.21 | Electrical substation door adjusted to match TIC drawing received 26.02.21. Parapet breaks added inline with MEP model | ASM | SL |
| 3 | 25.06.21 | Cavity barriers, movement joints, swift nests and bat nests added to elevations | ASM | SL |



Courtyard North Elevation
1 : 100

| Code | Suitability |
|------|---|
| SD | Work in Progress |
| S1 | Suitable for coordination/ Preliminary |
| S2 | For Information |
| S3 | Suitable for review and comment/ Design |
| D2 | Suitable Tender |
| D3 | Suitable for manufacture/ Construction |
| CR | Construction records/ as-built |

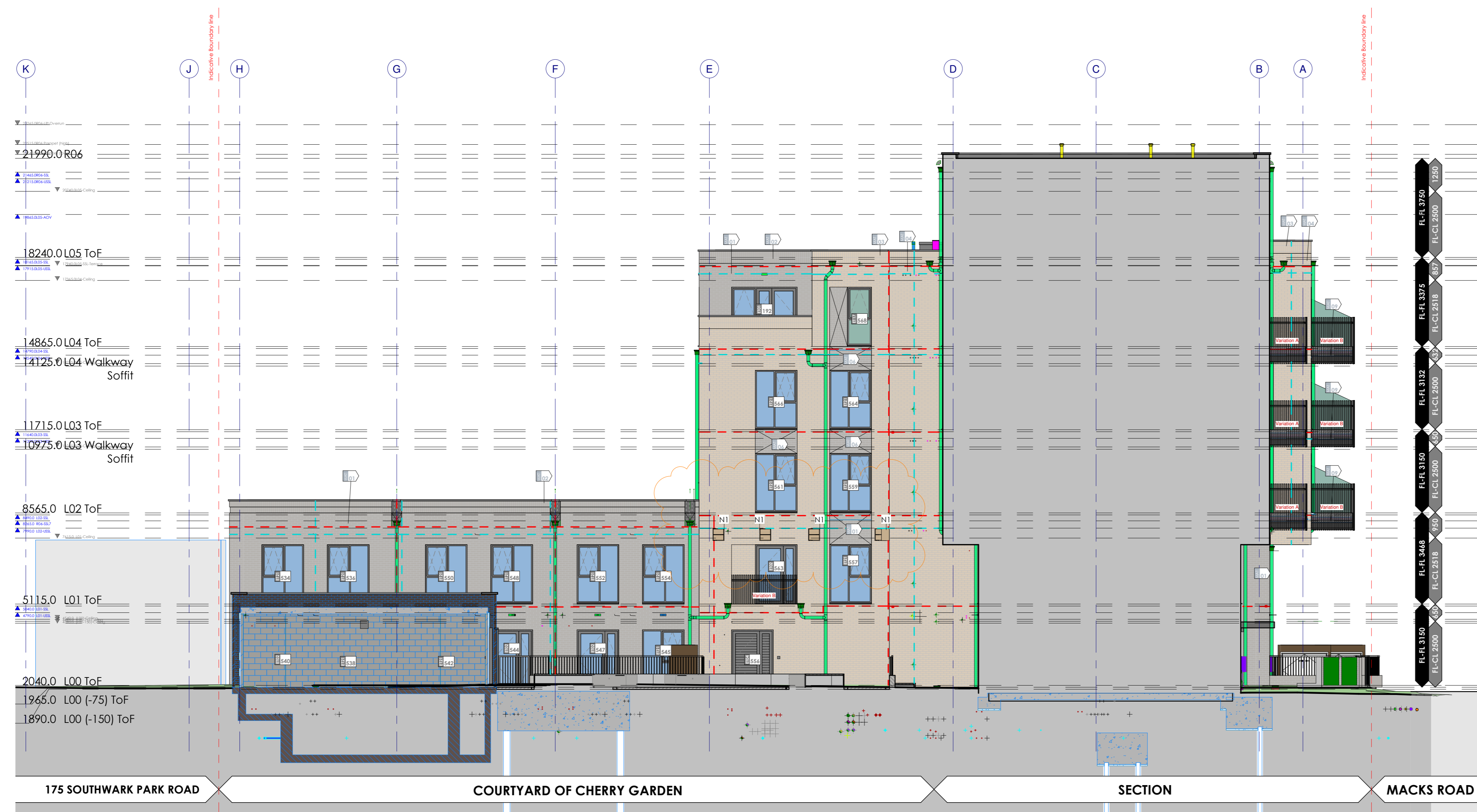
MATERIAL KEY LEGEND (REFER TO SC-EM FOR DETAILS- F2347-ACA-XX-XX-SCM-A01-6109)

- MAT 01 - BRICK, dark brown with white raked mortar joint
- MAT 02 - BRICK, dark brown soldier course band, raked mortar joints
- MAT 03 - BRICK, light cream soldier course with matching mortar
- MAT 04 - BRICK, light cream with matching mortar
- MAT 05 - Rain water goods, Aluminum PPC RWP to match MAT 07
- MAT 06 - BRICK, dark brown recessed with white mortar joints
- MAT 07 - WINDOW FRAME, TBC - dark grey PPC aluminium/finishes composite window/ doors
- MAT 08 - Louvered refuse door - Louvered metal door - RAL 9016
- MAT 08A - Louvered substation door - Louvered metal door - colour to match MAT 07
- MAT 09 - Flat plate 60x5 metal railing balustrade - colour to match MAT 07
- MAT 10 - GRP entrance canopy - RAL 9016
- MAT 11 - Balcony surround & soffit, TBC PPC aluminium cladding panels - colour to match MAT 07
- MAT 12 - BRICK, dark grey

- Rolling Variation - refer to Detail 5601.2
- Variation A
- Variation B
- - - FR60 Cavity Barriers
- - - Indicative Movement joint positions, TBC by SE
- N1 Double Swift Nest positions
- N2 Bat Nest Positions

GA-GENERAL NOTES

- Based on:
- ACA Planning approved scheme Ref: 20/AF/1383
 - DESIGN BASE topography survey drawing: D61520-TOPO
 - Land Registry Title Number SGL32285
 - Refer to ACA 8100 series for remaining coordination comments
- NIA = Inside wall line of unit with staircases included at every level
 * Minimum Areas - as per Technical housing standards - nationally described space standard
 ** Minimum Amenity Areas - as per RDS Residential Design Standards SPD, 2011
 R= Rented SQ= Shared Ownership PR= Private
 M4(3)(2)(a) Category 3= Adaptable Wheelchair user dwelling
 M4(3)(2)(b) Category 3= Accessible Wheelchair user dwelling
 Based on Approved Document M BR_PDF_AD_M1_2015_with_2016_amendments_V3
- To be read in conjunction with:
 "GA-P" series Plans - ACA drawing series 1000
 "GA-S" series Sections - ACA drawing series 3000
 "SC" series Schedule - ACA drawing series 6000
 "D" series Detail - ACA drawing series 4000 & 5000
 Flat Type (FT#) - Refer to GA-FT, ACA drawing series 1500
 Bathroom Type (BT#) - Refer to SC-BT, ACA drawing series 6400
 Kitchen Type (KT#) - Refer to SC-KT, ACA drawing series 6500



Courtyard South Elevation
1 : 100

| HATCH | INFO. | COMPANY | SPECIFIC DRAWING OR MODEL/ SERIES REF | DATE |
|-------|-------|-----------------|---------------------------------------|------------|
| GREEN | M&E | Hendrick Waring | CGS-ACA-XX-XX-ELV-A01-2003-03 | 27.04.2021 |
| BLUE | SE | Fully De-Arch | CGS-88-02-02-M4-021-21 | 18.05.2021 |

