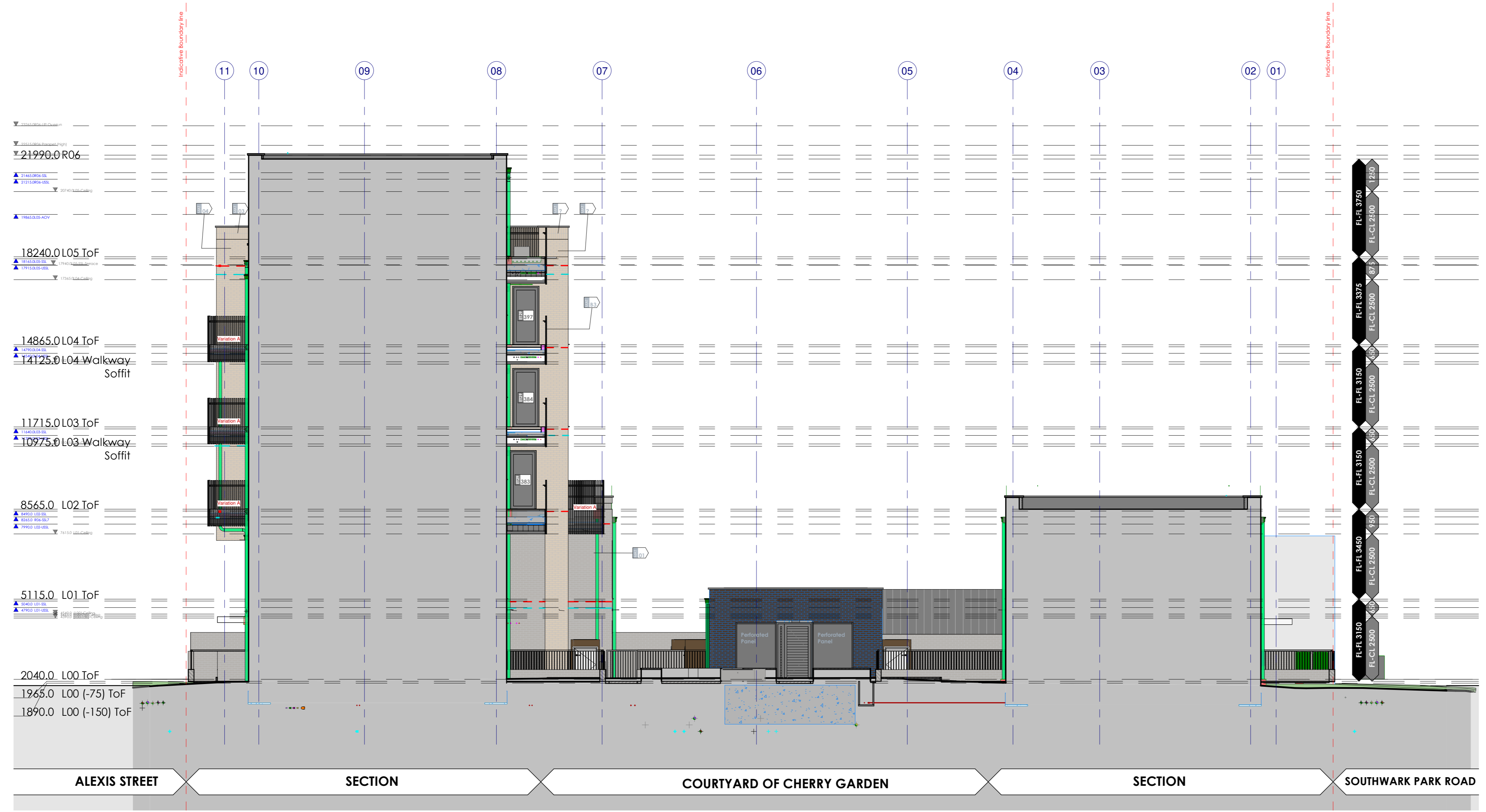


rev	date	description	drawn	check
1	12.02.21	Issued for Construction.	ASM	SL
2	05.03.21	Electrical substation door adjusted to match TIC drawing received 26.02.21. Parapet breaks added inline with MEP model	ASM	SL
3	25.06.21	Cavity barriers, movement joints, swift nests and bat nests added to elevations	ASM	SL



**Courtyard East Elevation**  
1 : 100



**Courtyard West Elevation**  
1 : 100

Code	Suitability
S0	Work in Progress
S1	Suitable for coordination/ Preliminary
S2	For Information
S3	Suitable for review and comment/ Design
D2	Suitable Tender
D3	Suitable for manufacture/ Construction
CR	Construction records/ as-built

**MATERIAL KEY LEGEND (REFER TO SC-EM FOR DETAILS- F2347-ACA-XX-XX-SCM-A01-610P)**

- MAT 01 - BRICK, dark brown with white raked mortar joint
- MAT 02 - BRICK, dark brown soldier course band, raked mortar joints
- MAT 03 - BRICK, light cream soldier course with matching mortar
- MAT 04 - BRICK, light cream with matching mortar
- MAT 05 - Rain water goods, Aluminum PPC RWP to match MAT 07
- MAT 06 - BRICK, dark brown recessed with white mortar joints
- MAT 07 - WINDOW FRAME, TBC - dark grey PPC aluminum/finer composite window/ doors
- MAT 08 - Louvered refuse door - Louvered metal door - RAL 9016
- MAT 08A - Louvered substation door - Louvered metal door - colour to match MAT 07
- MAT 09 - Flat plate 60x5 metal railing balustrade - colour to match MAT 07
- MAT 10 - GRP entrance canopy - RAL 9016
- MAT 11 - Balcony surround & soffit, TBC PPC aluminum cladding panels - colour to match MAT 07
- MAT 12 - BRICK, dark grey

- Rolling Variation - refer to Detail 5601.2
- Variation A
- Variation B
- - - FR60 Cavity Barriers
- - - Indicative Movement joint positions, TBC by SE
- N1 Double Swift Nest positions
- N2 Bat Nest Positions

**GA-GENERAL NOTES**

- Based on:
  - ACA Planning approved scheme Ref: 20/AF/1383
  - DESIGN BASE topography survey drawing: Db1520-TOPO
  - Land Registry Title Number SGL322885
  - Refer to ACA 8100 series for remaining coordination comments

- NIA = Inside wall line of unit with staircases included at every level
- \* Minimum Areas - as per Technical housing standards - nationally described space standard
- \*\* Minimum Amenity Areas - as per RDS Residential Design Standards SPD, 2011
- R= Rented SQ= Shared Ownership PR= Private
- M4(3)(2)(a) Category 3= Adaptable Wheelchair user dwelling
- M4(3)(2)(b) Category 3= Accessible Wheelchair user dwelling
- Based on Approved Document M BR\_PDF\_AD\_M1\_2015, with 2016 amendments V3

- To be read in conjunction with:
  - "GA-P" series Plans - ACA drawing series 1000
  - "GA-S" series Sections - ACA drawing series 3000
  - "SC" series Schedule - ACA drawing series 6000
  - "D" series Detail - ACA drawing series 4000 & 5000
  - Floor Type (FT#) - Refer to GA-FT, ACA drawing series 1500
  - Bathroom Type (BT#) - Refer to SC-BT, ACA drawing series 6400
  - Kitchen Type (KT#) - Refer to SC-KT, ACA drawing series 6500

HATCH	INFO.	COMPANY	SPECIFIC DRAWING OR MODEL/ SERIES REF	DATE
MAE	Handicap marking	CGS-ACA-XX-XX-ELV-A01-2004	27/04/2021	
SE	Fully De-Br	CGS-88-07-02-M4-3021	18/05/2021	

**LOCATION PLAN** SCALE 1:1250

