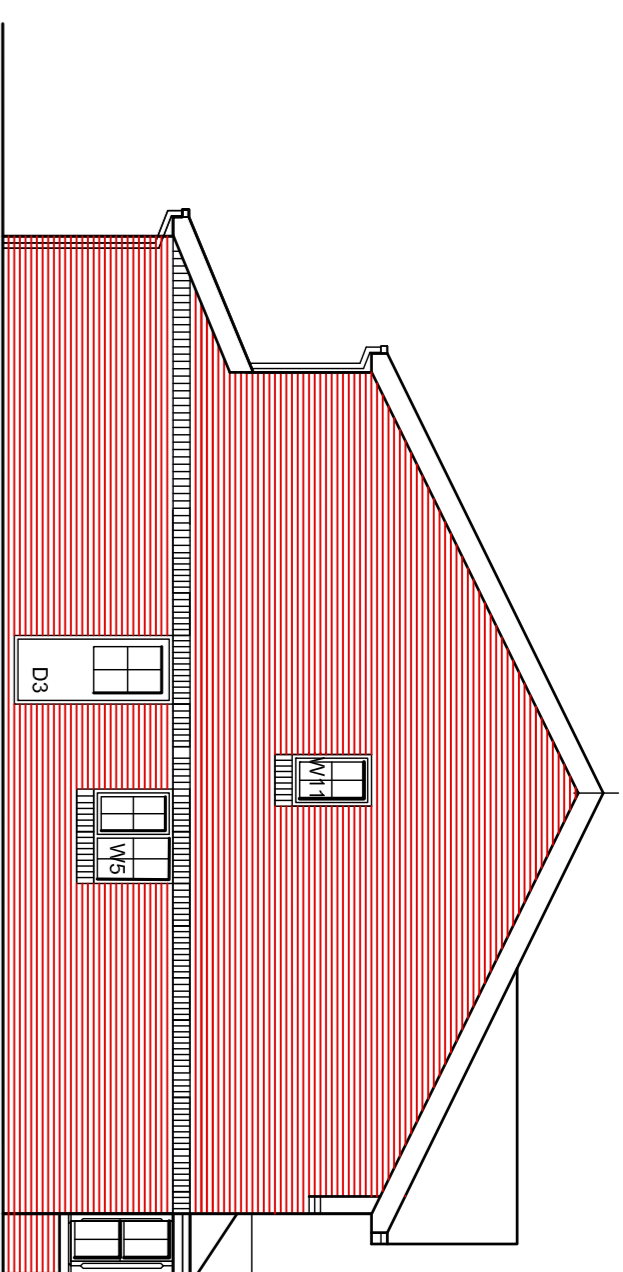
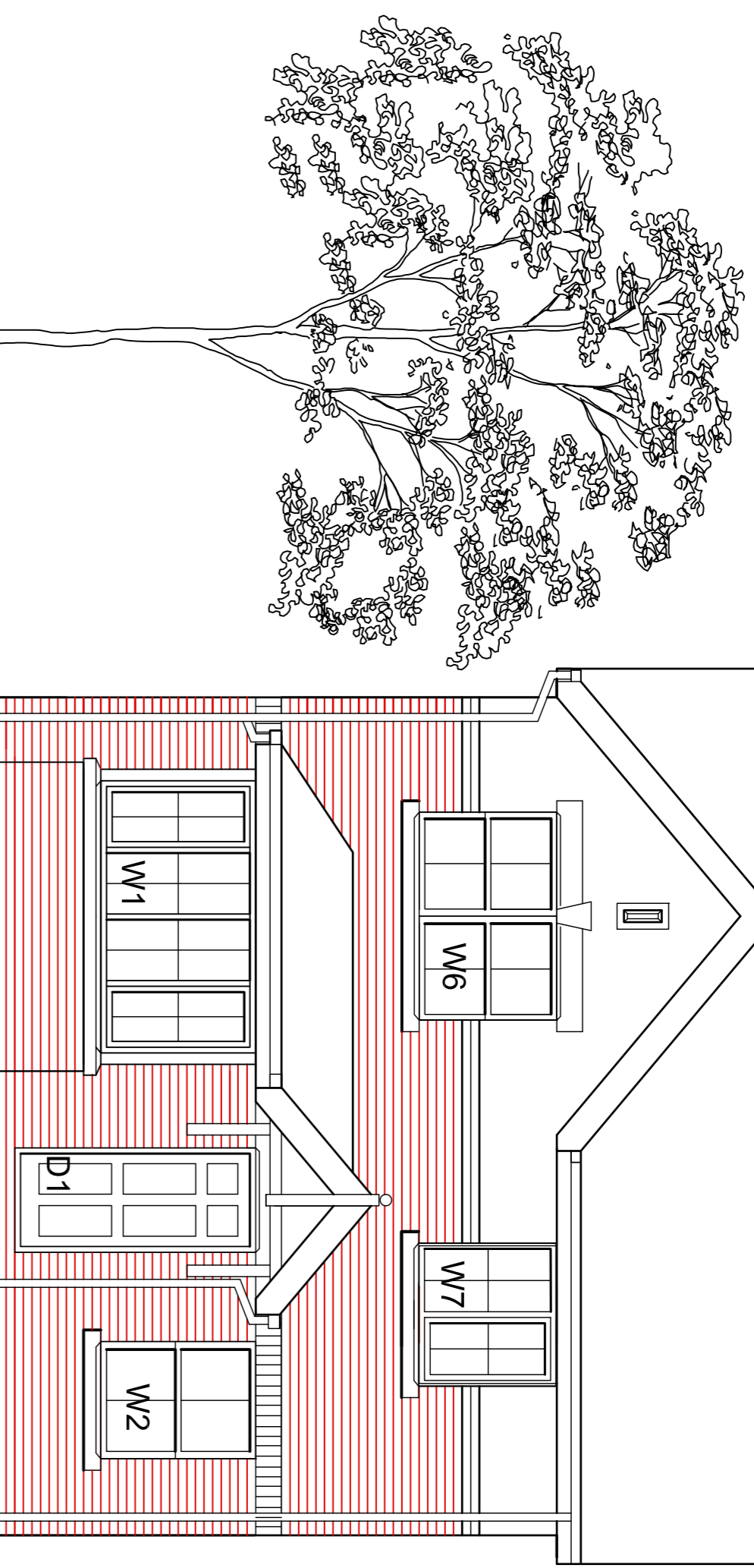
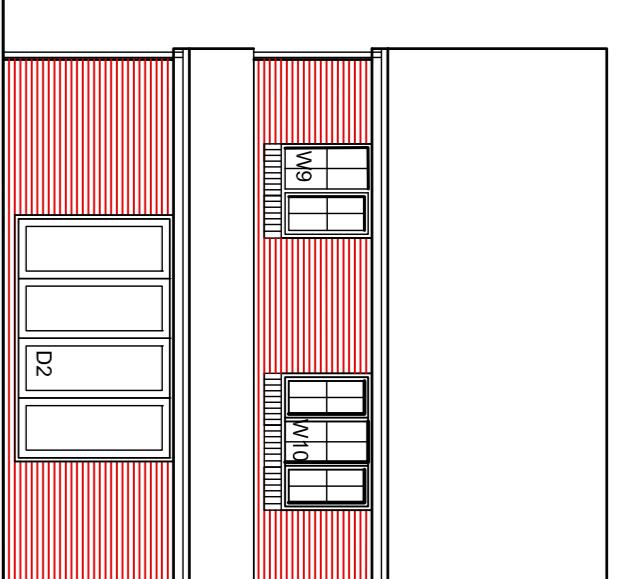


# the WINCHESTER

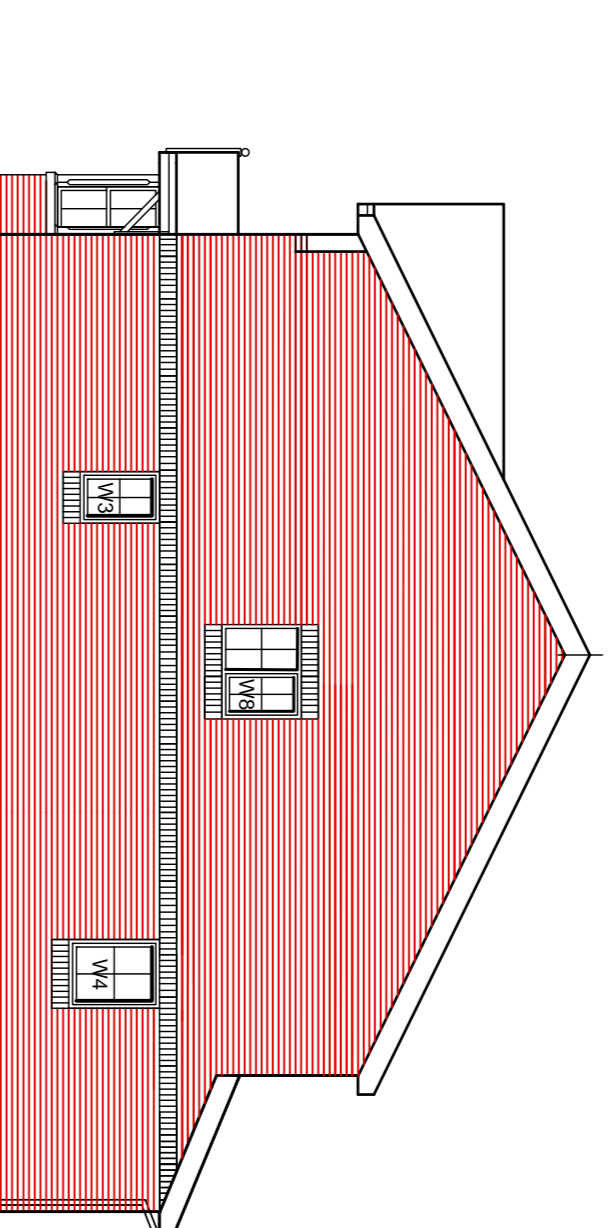
Plots -  
Plots - (handed)



**SIDE ELEVATION** 1:100



**REAR ELEVATION** 1:100

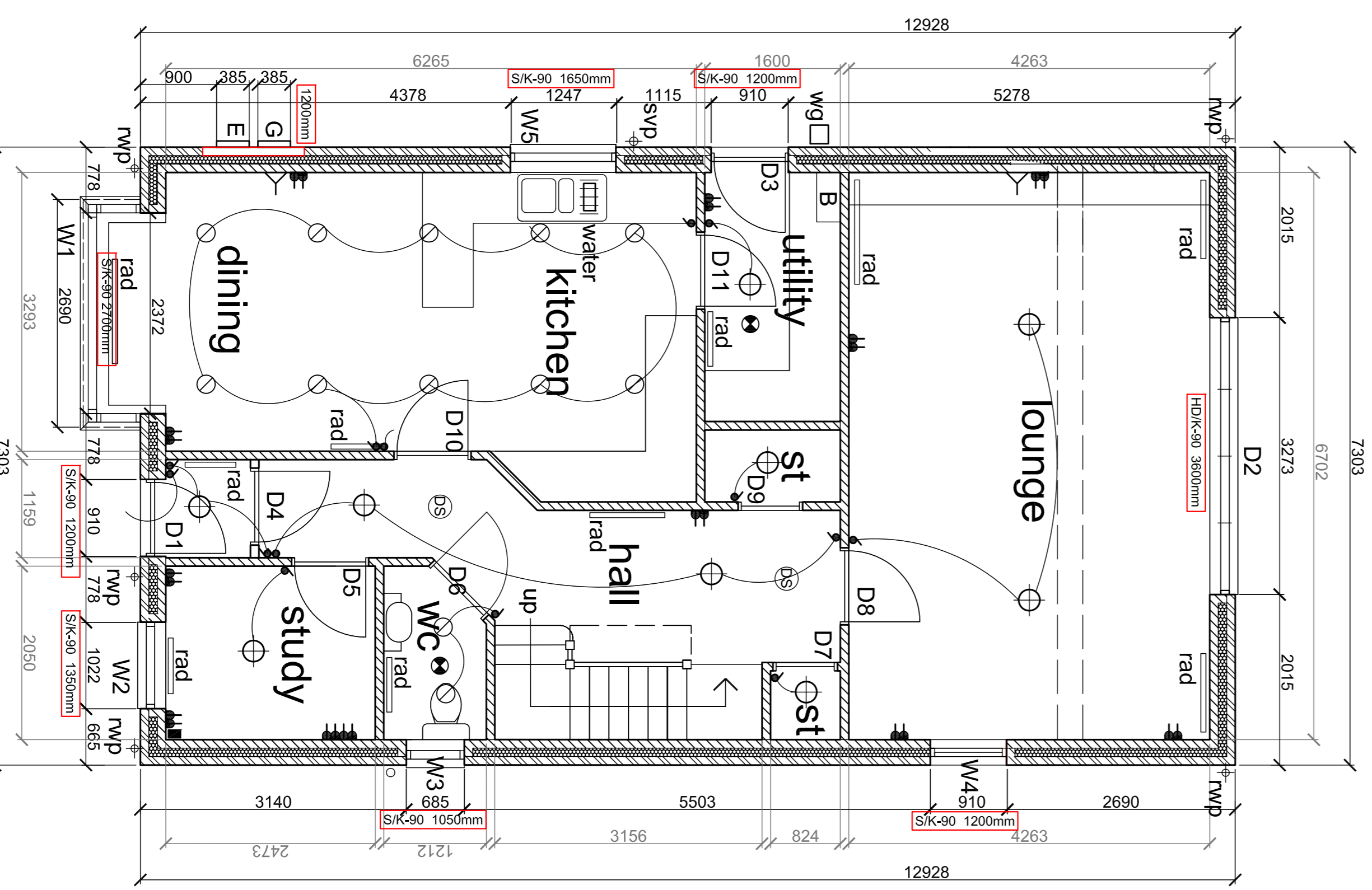


**SIDE ELEVATION** 1:100

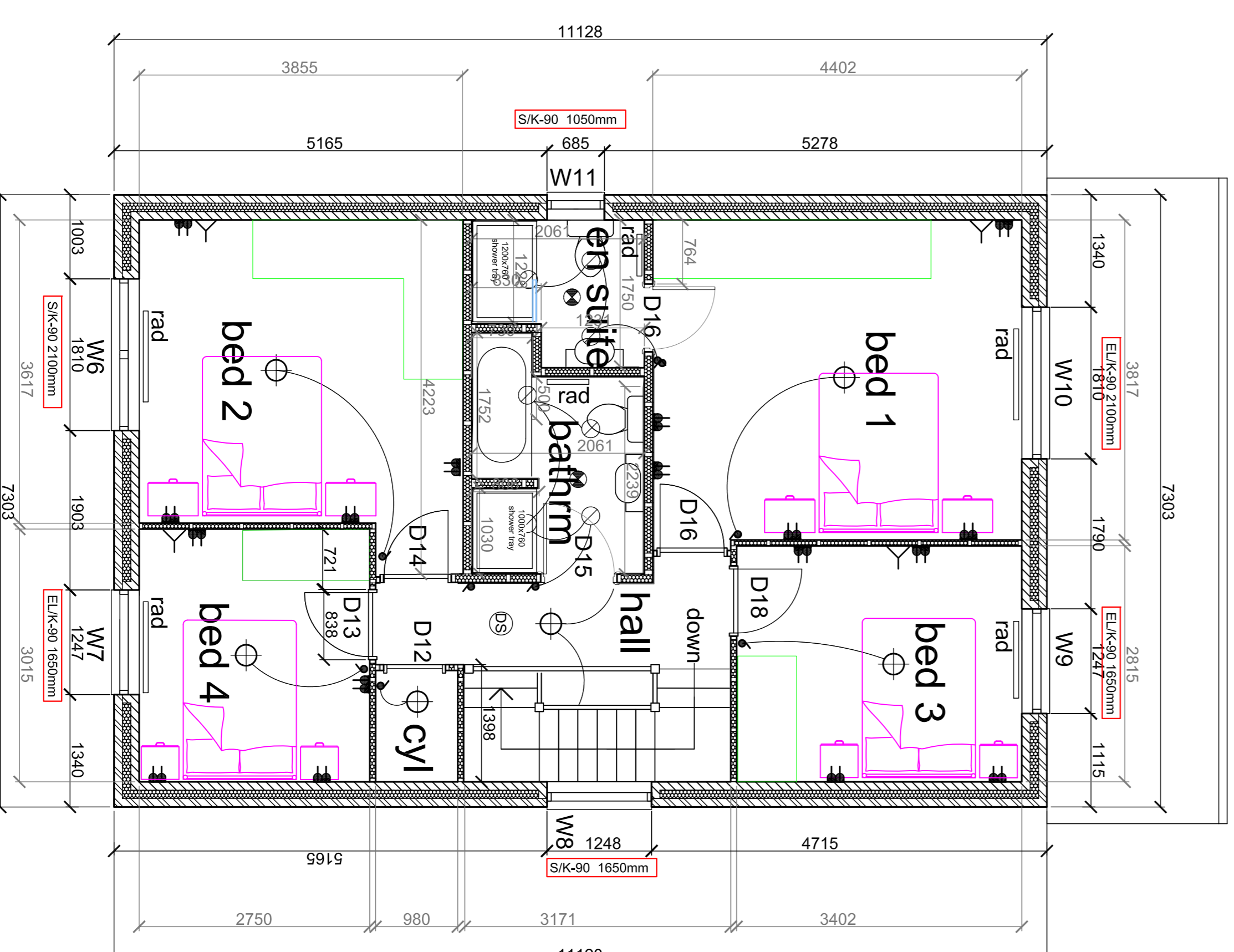
ref	opening width	opening height	door notes	lintel	length
D1	910	2100	838 P/M access	SIK-90	1200
D2	3278	2100	838 BiRad	HD/K-90	3600
D3	910	2100	838 utility person	SIK-90	1200
D4	910	2100	838 hall glazed		
D5	910	2100	838 store		
D6	910	2100	838 store		
D7	762	2100	686 store		
D8	910	2100	838 store		
D9	762	2100	686 store		
D10	910	2100	838 store		
D11	910	2100	838 store		
D12	762	2100	686 cylinder		
D13	838	2100	782		
D14	838	2100	782		
D15	838	2100	782		
D16	838	2100	782		
D17	838	2100	782		
D18	838	2100	782		

ref	opening width	opening height	notes	lintel	length
W1	2372	1350	bay	SIK-90	2700
W2	1022	1200	obscure glazed	SIK-90	1350
W3	685	1050	obscure glazed	SIK-90	1050
W4	1247	1650		SIK-90	1650
W5	1247	1650		SIK-90	1650
W6	1810	1200		SIK-90	2100
W7	1247	1200	obscure glazed	ELK-90	1650
W8	1248	1050	obscure glazed	SIK-90	1650
W9	1247	1200		ELK-90	1650
W10	810	1200		ELK-90	2100
W11	659	1050	obscure glazed	SIK-90	1050

ref	opening width	opening height	notes	lintel	length
E.G.	385 x 21	525	Single leaf		1200



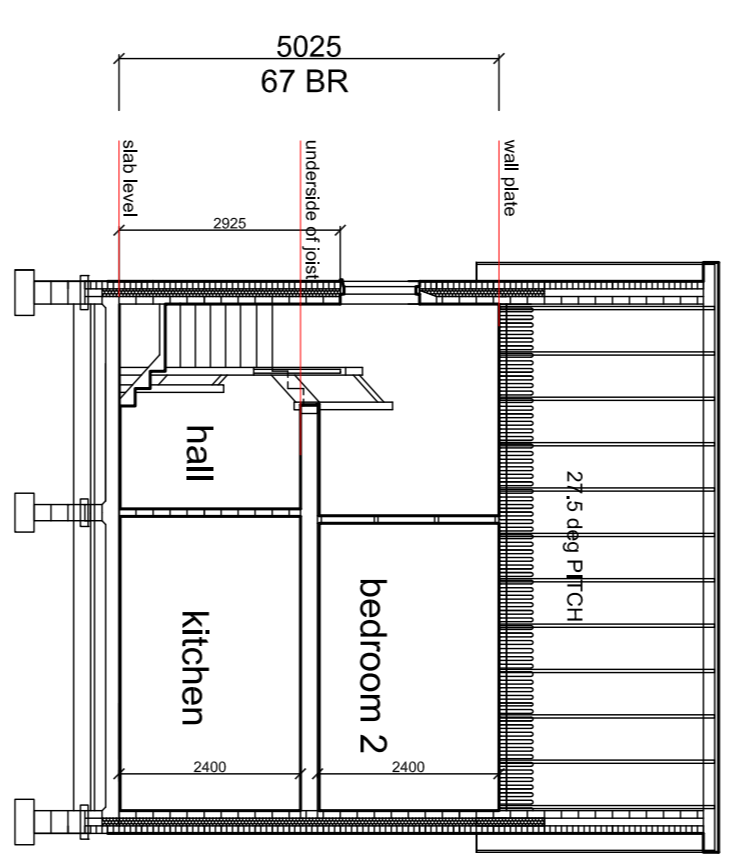
**GROUND FLOOR PLAN** 1:50



**FIRST FLOOR PLAN** 1:50

FLOOR AREA	Sq ft
Floor	905
Ground Floor	2400
First Floor	760
GIFA	1685

Ceiling Height	From Slab	mm
Ground Floor	2400	
First Floor	2400	
Utility	2400	



**SECTION** 1:100

- KEY**
- ⊞ double switched socket
  - ⊞ F fused spur
  - ⊞ TV aerial point
  - ⊞ light switch
  - ⊞ recessed light point
  - ⊞ pendant light point
  - ⊞ wall light point
  - ⊞ telephone point
  - ⊞ smoke detector
  - ⊞ ceiling extractor
  - ⊞ electric vehicle charging point
  - ⊞ ONT (fibre box)
  - rad



**Baxter homes**  
www.baxterhomes.co.uk

**Proposed Housing Development**  
Gradwells Farm  
Copp Lane  
Great Eccleston

The Winchester House Type

job no. 4667  
scale 1:50, 1:100  
date 29-04-2021

drawn: MAG  
checked: RJB  
issue

Drawing No. **A1** F205-01

All dimensions are to be checked on site prior to commencing any works. Any discrepancies are to be reported immediately to the Site Agent. The Site Agent will be responsible for ensuring that the works are carried out in accordance with the approved plans and specifications. The Site Agent will be responsible for ensuring that the works are carried out in accordance with the approved plans and specifications. The Site Agent will be responsible for ensuring that the works are carried out in accordance with the approved plans and specifications.