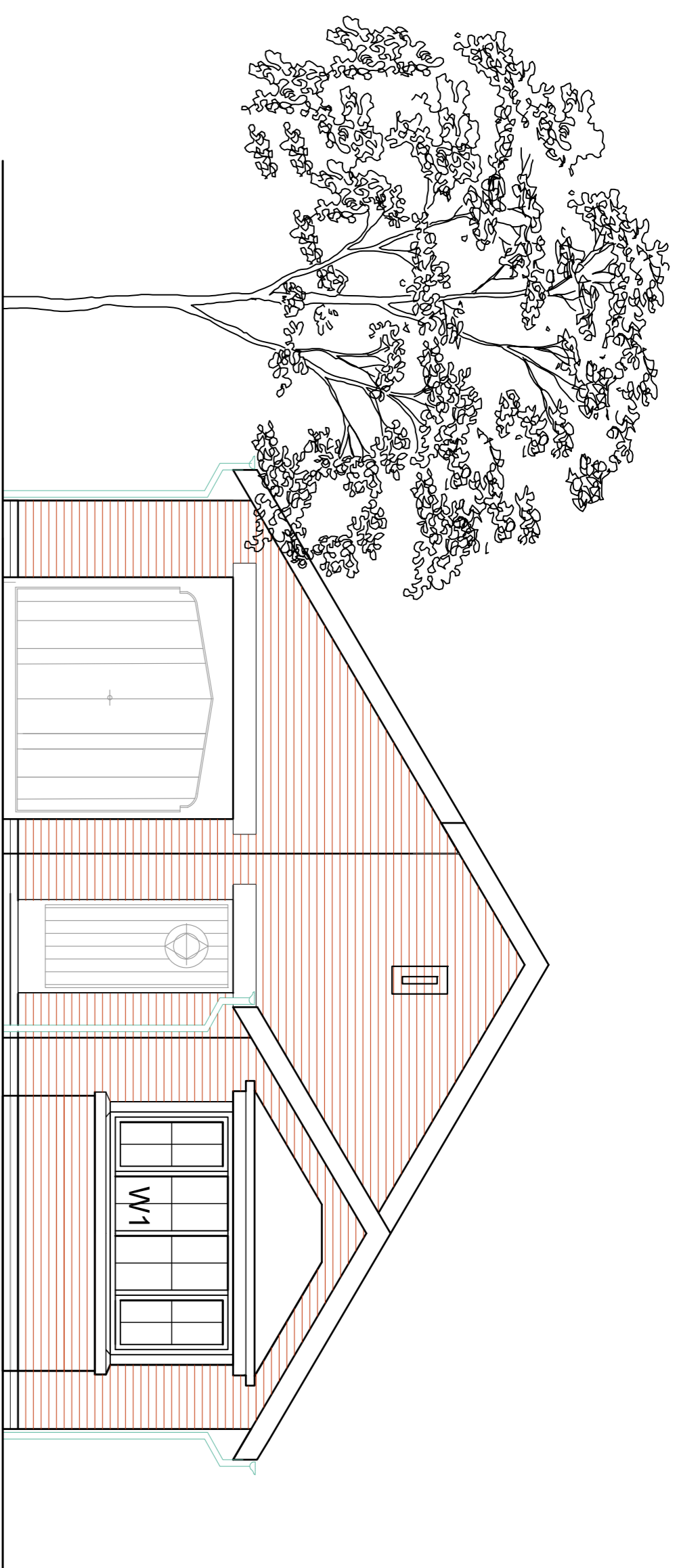


GROUND FLOOR PLAN 1:50

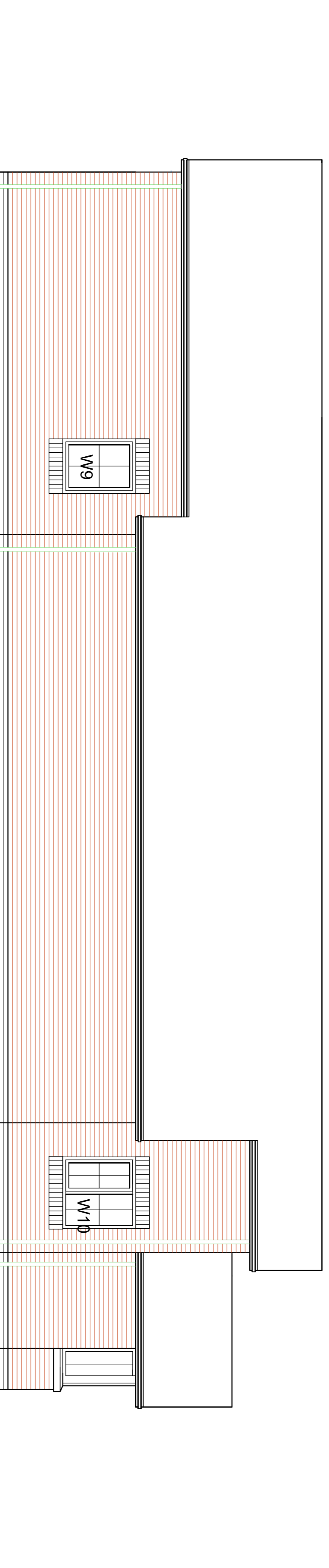


FRONT ELEVATION 1:50

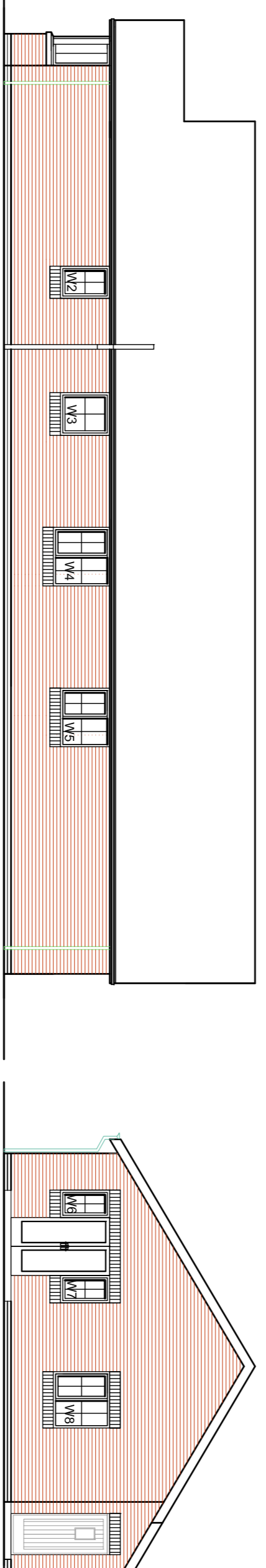
ref	opening	door	notes	lintel	length
D1	910	2100	838	SIK-90	1200
D2	1340	2100	720 x2	SIK-90	2850
D3	910	2100	838	SIK-90	1200
D4	2992	2100	838	SIK-90	2700
D6	675	2100	420 x2	SIK-90	1200
D7	910	2100	838	SIK-90	1200
D8	910	2100	838	SIK-90	1200
D9	910	2100	838	SIK-90	1200
D10	910	2100	838	SIK-90	1200
D11	910	2100	838	SIK-90	1200
D12	1700	2100	800 x2	hair glazed 3B1	2100

ref	opening	opening notes	lintel	length
W1	2690	1200	SIK-90	3000
W2	24	1050	obscure glazed	1050
W3	910	1050	obscure glazed	1200
W4	910	1050	obscure glazed	1200
W5	1248	1050	ELK-90	1650
W6	537	1200	ELK-90	1650
W7	537	1200	SIK-90	1650
W8	1248	1200	SIK-90	1650
W9	910	1200	SIK-90	1200
W10	1135	1200	SIK-90	1500

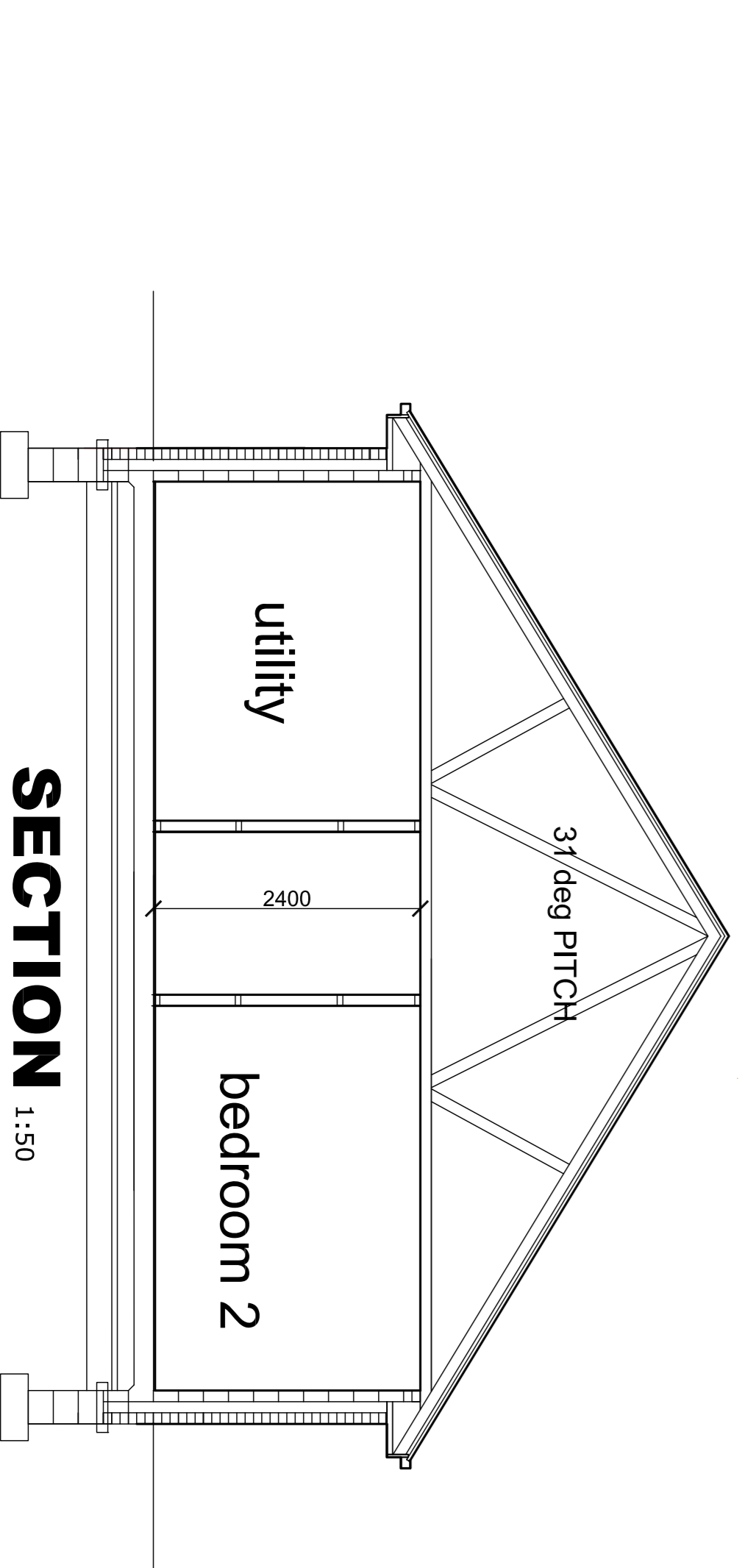
ref	opening	opening notes	lintel	length
E G	385 x 2	535	Single leaf	1200



SIDE ELEVATION 1:50



REAR ELEVATION 1:100



SECTION 1:50

Ceiling Height		FLOOR AREA	
Floor	mm	Floor	Sq ft
From Slab	2400	Ground Floor	1212
Ground Floor	2400	Utility	

Baxter homes
www.baxterhomes.co.uk

Proposed Housing Development
Gradwells Farm
Copp Lane
Great Eccleston

drawing	The Buckingham House Type	drawn	MAG
job no.	4667	checked	RJB
scale	1:50, 1:100	issue	
date	29-04-2021		
Drawing Size	A1	Drawing No	F220/01

- KEY**
- ⊞ double switched socket
 - ⊞ fused spur
 - ⊞ TV aerial point
 - ⊞ light switch
 - ⊞ recessed light point
 - ⊞ pendant light point
 - ⊞ wall light point
 - ⊞ telephone point
 - ⊞ smoke detector
 - ⊞ ceiling extractor
 - ⊞ electric vehicle charging point
 - ⊞ ONT (fibre box)
 - rad

THE BAXTER GROUP

All dimensions are to be checked on site prior to commencing any works. Any discrepancy between the drawings and the actual site conditions shall be reported to the architect immediately. The architect shall not be responsible for any errors or omissions in the drawings. The architect shall not be responsible for any errors or omissions in the drawings. The architect shall not be responsible for any errors or omissions in the drawings.