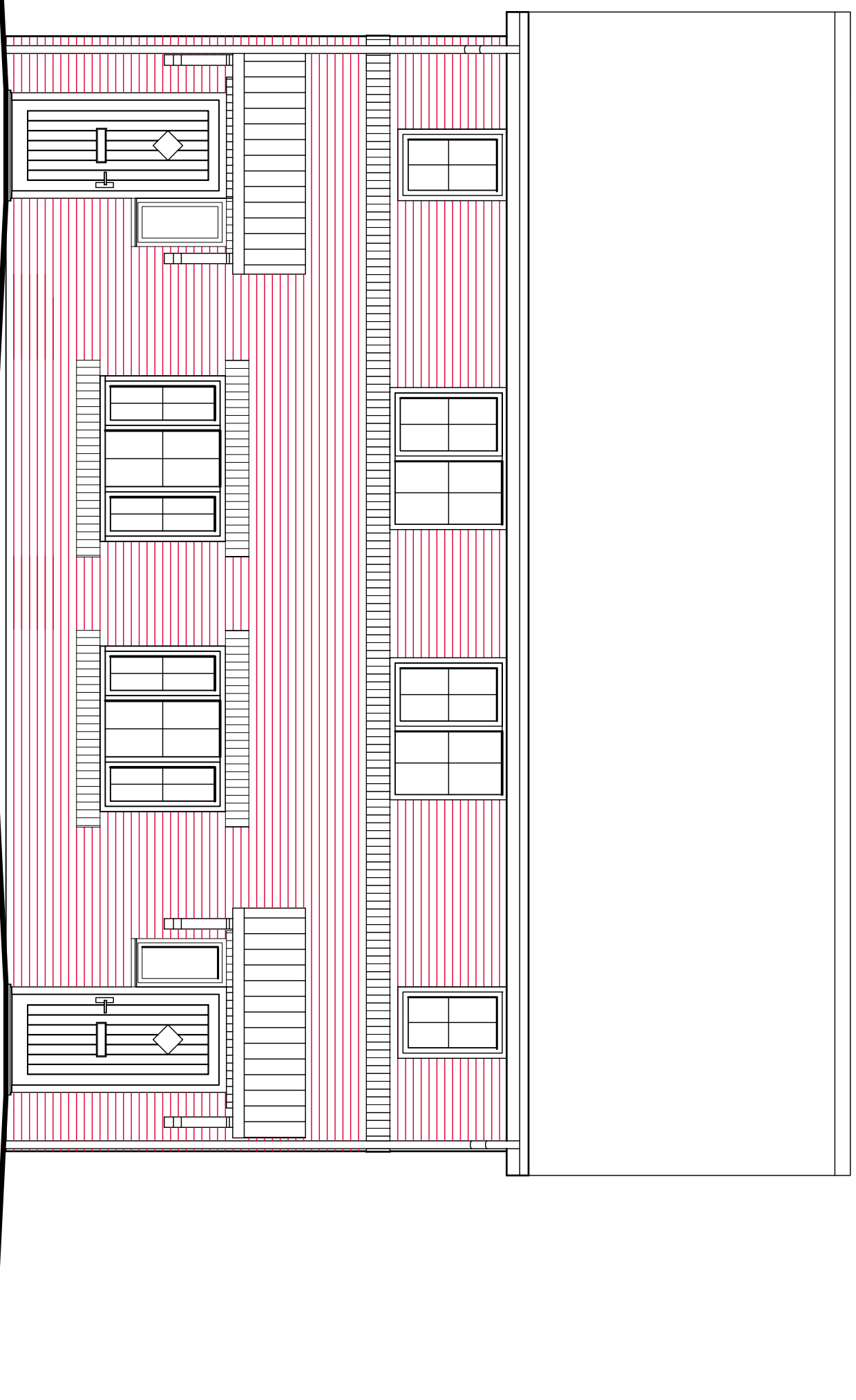
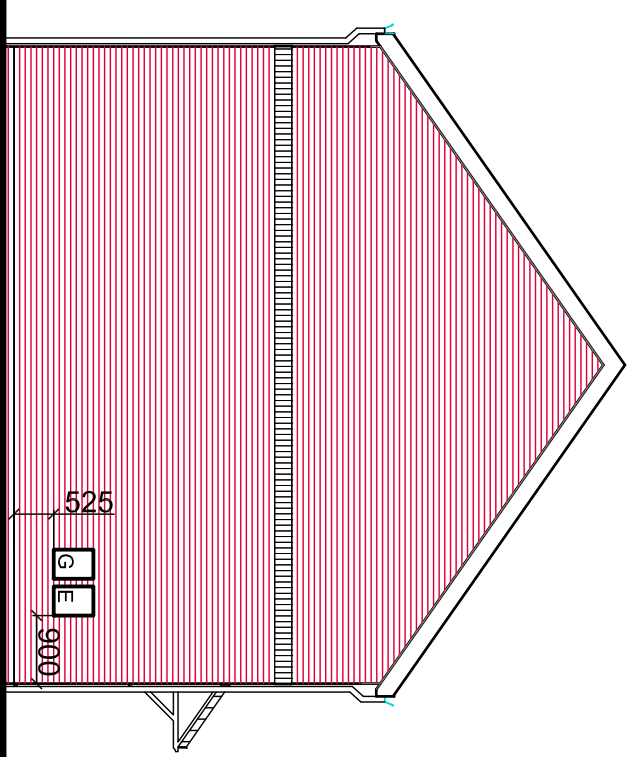


AFFORDABLE

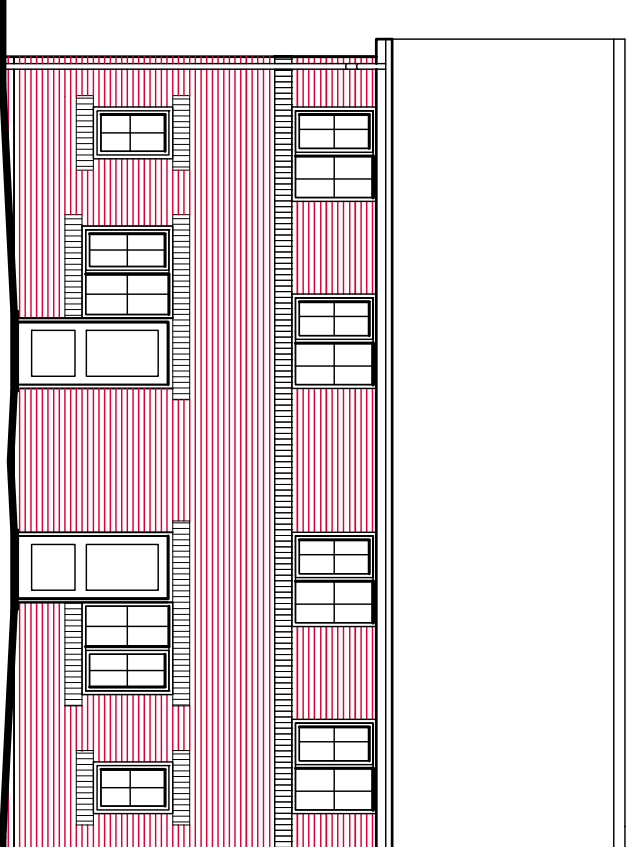
Plot -



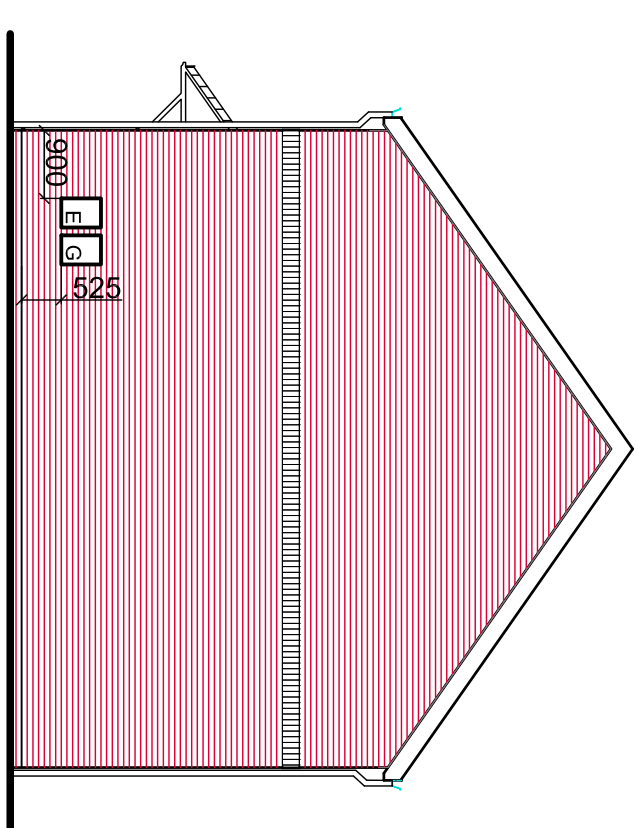
FRONT ELEVATION 1:50



SIDE ELEVATION 1:100



REAR ELEVATION 1:100

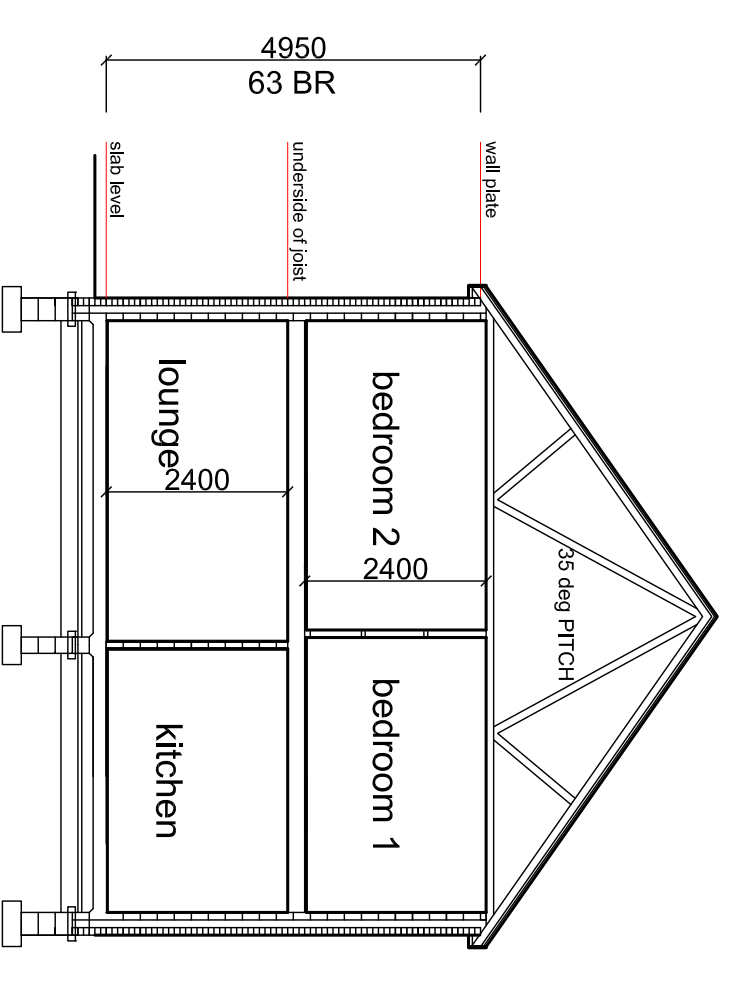


SIDE ELEVATION 1:100

ref	opening	door	notes	lintel	length
D1	910	2100	838	SIK-90	1200
D2	910	2100	838	PI M access	1200
D3	910	2100	838	PI M access	1200
D4	655	2100	563	store	1450
D5	655	2100	563	store	1450
D6	910	2100	838	store	1200
D7	910	2100	838	store	1200
D8	910	2100	838	store	1200
D9	910	2100	838	store	1200
D10	910	2100	838	store	1200
D11	910	2100	838	store	1200
D12	910	2100	838	store	1200

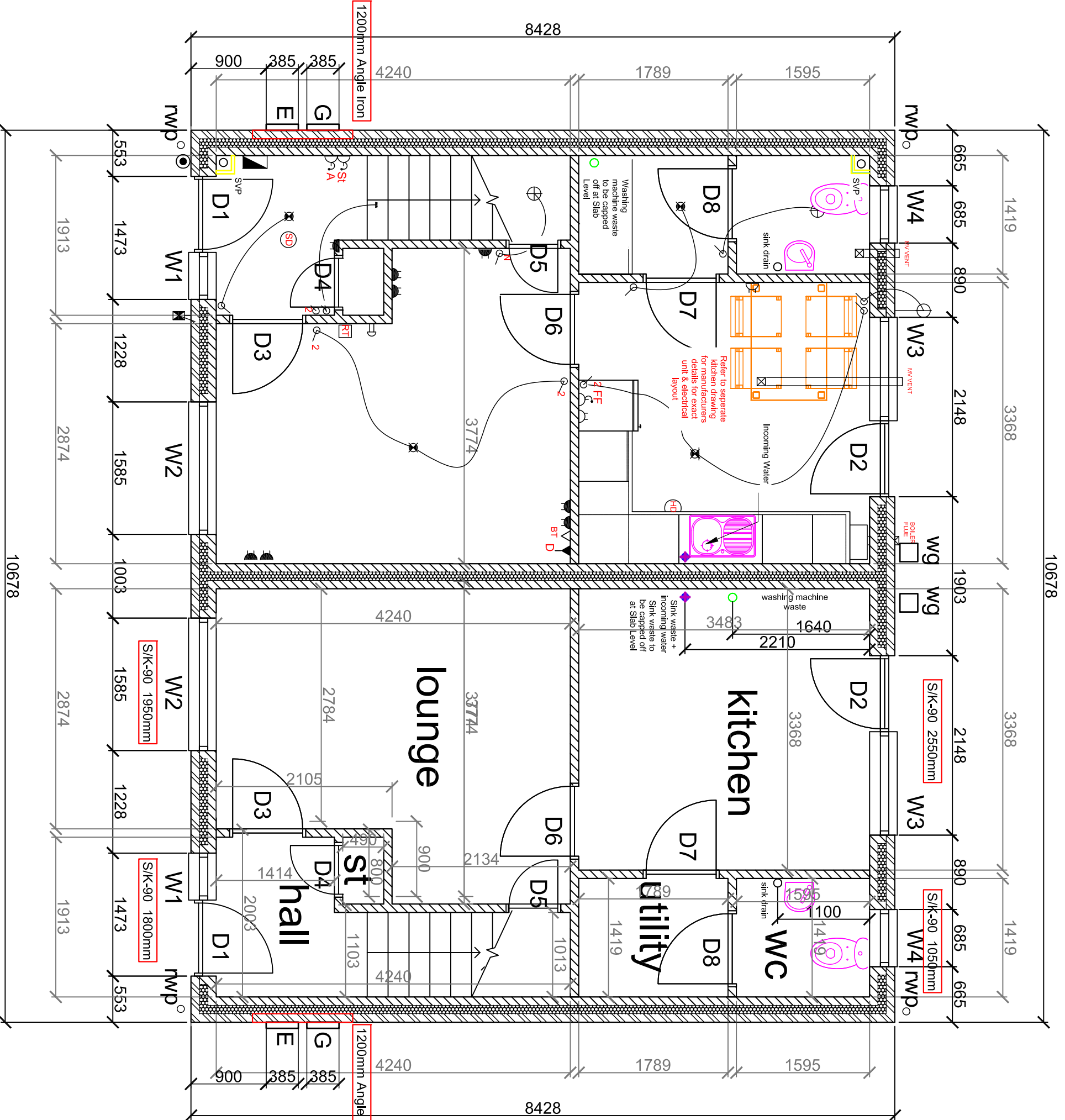
ref	opening	notes	lintel	length
W1	553	900	SIK-90	1950
W2	1248	1200	SIK-90	1800
W3	1248	1200	SIK-90	1800
W4	685	1050	obscure	2550
W5	685	1050	obscure	1800
W6	1360	1125	obscure	1050
W7	1248	1125	ELIK-90	1850
W8	1248	1125	ELIK-90	1850

ref	opening	notes	lintel	length
E-G	385 x 2	525	Single lead angle iron	1200

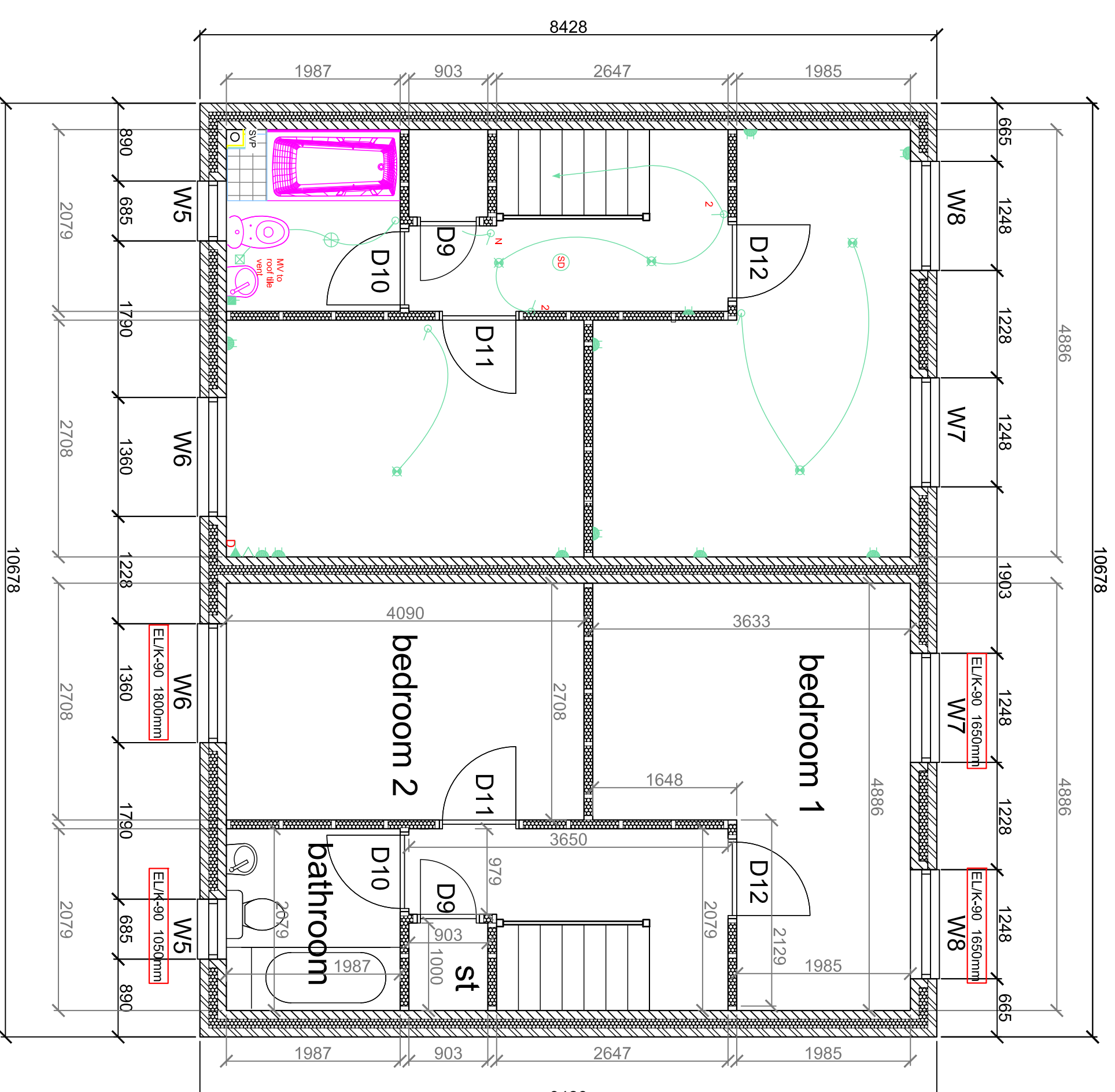


SECTION

Floor	Sq ft
2 Bed	820
Ground Floor	410
First Floor	410
GIFA	820



GROUND FLOOR PLAN



FIRST FLOOR PLAN

⚡	consumer unit required	⊕	Master telephone/cable socket
D	high level double socket	+	gas supply
L	low level double socket	□	cooker control unit
D-1	electric shower - 4 line flow rate	■	combined light & shower point
L-1	light switch	⊙	door but with illuminated push
L-2	2 way light switch	⊙	door but chain
L-3	light switch with neon indicator	⊗	mechanical extend
⊗	wall light fitting	⊗	reflector
⊗	flashes fire alarm smoke detector	⊗	low energy lamp
D-REF	flashed spur for electric fire	⊗	heat detector
D-VA	flashed spur for alarm	⊗	digital television aerial point
D-VA	flashed spur for alarm	⊗	telephone point
D-VA	flashed spur for alarm	⊗	low level socket for wash basin
D-VA	flashed spur for alarm	⊗	D-1WM switched from below workshop
D-VA	flashed spur for alarm	⊗	D-1H1 flashed spur for kitchen through lin
D-VA	flashed spur for alarm	⊗	D-1H2 flashed spur for fridge freezer
D-VA	flashed spur for alarm	⊗	IFOP fire alarm control panel
D-VA	flashed spur for alarm	⊗	8RFG fire alarm break glass
H	Mansfield LED exit sign light	⊕	Balustraded light

GENERAL NOTES:
 All lighting switches to be engraved clearly to identify their purpose.
 All light fittings to be low energy/ 4 pin with 'stark' lid dowsers' sensors.
 max 150 wattage in accordance with CODE.
 Electric shower to have 6 line flow rate with heater switch located
 Low level level 'thead' button for the smoke alarm to be provided.

Baxterhomes
 www.baxterhomes.co.uk

Proposed Housing Development
 Gradwell's Farm
 Copp Lane
 Great Eccleston

Drawing No	Drawing to	Rev
A1	BH-04667-A-01	-



All dimensions are to be checked on site prior to commencing any works. Any discrepancies are to be notified immediately to the surveyor.
 This drawing and all the information contained therein is subject to copyright and must not be reproduced in part or in whole, without the written consent of The Baxter Group.
 All trademarks and registered trademarks are the property of their respective owners.