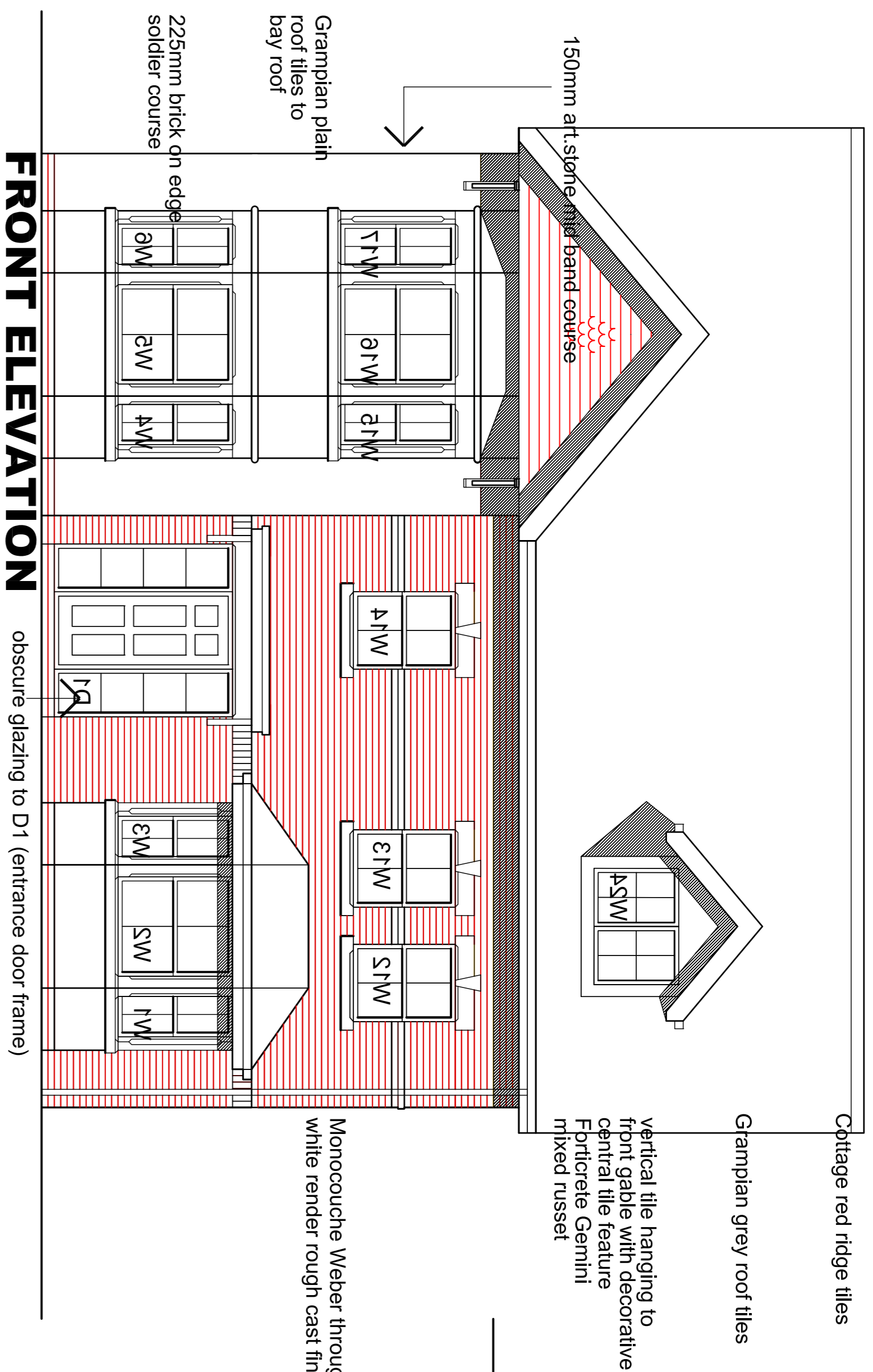


# the WINDSOR

Plot 3 & 6



**FRONT ELEVATION**

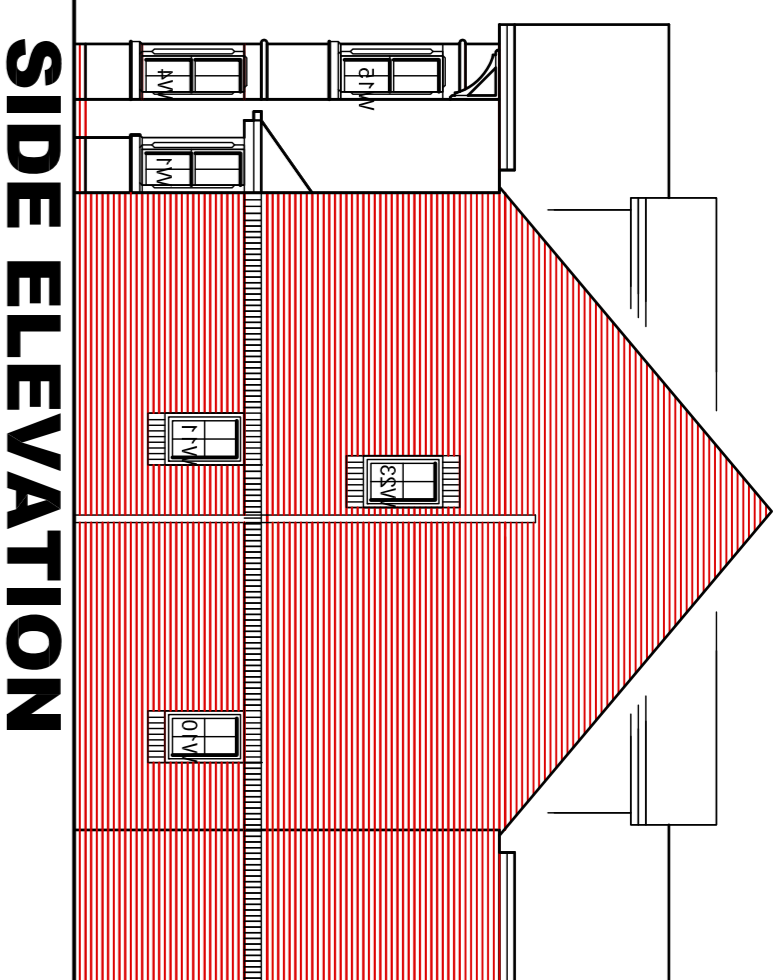
obscur glazing to D1 (entrance door frame)

Chertage red ridge tiles

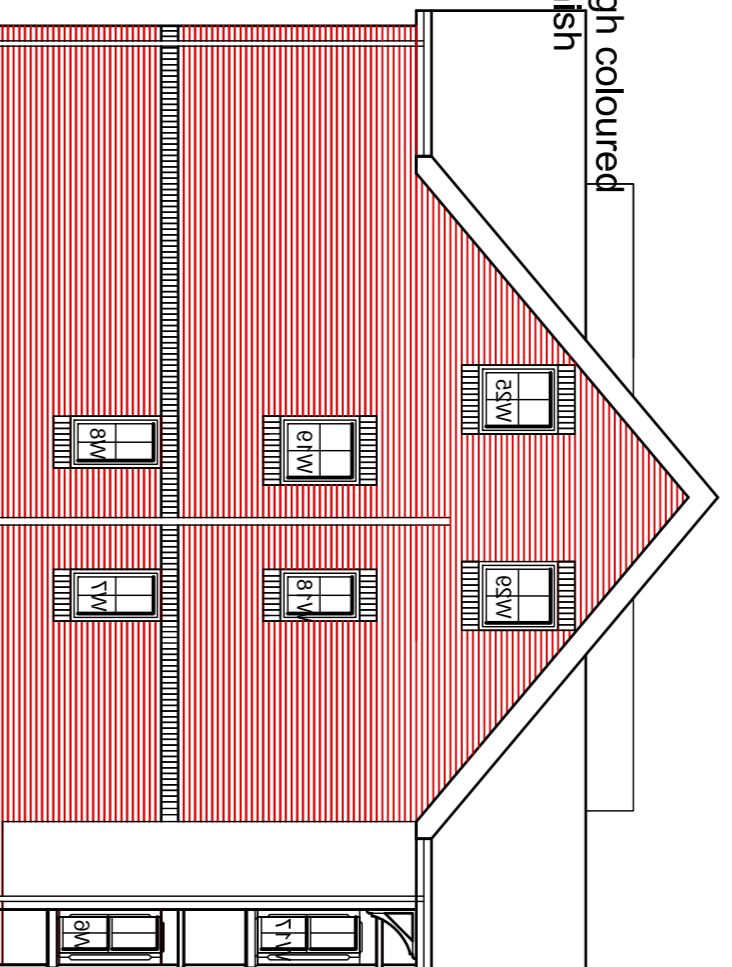
Grampian grey roof tiles

vertical tile hanging to front gable with decorative central gable feature  
Fornitec Gemini  
mixed russet

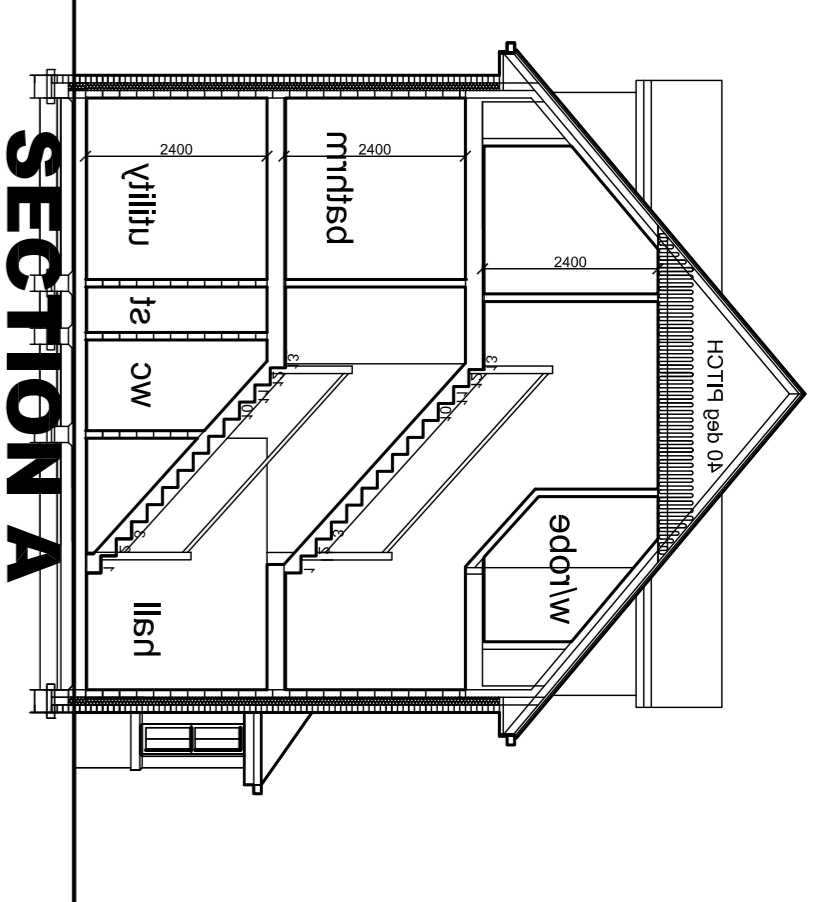
Monocouche Weber through coloured white render rough cast finish



**SIDE ELEVATION**



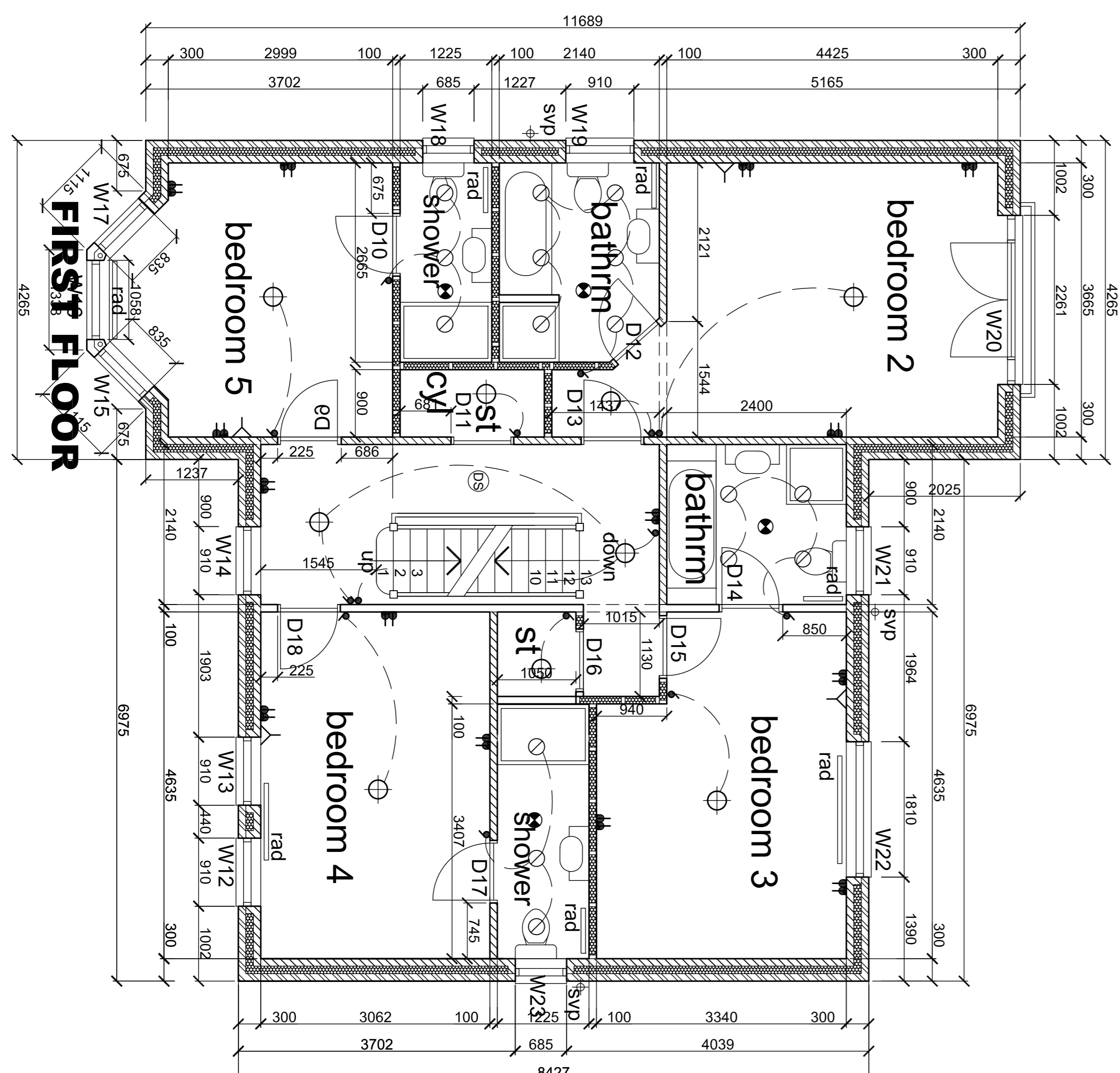
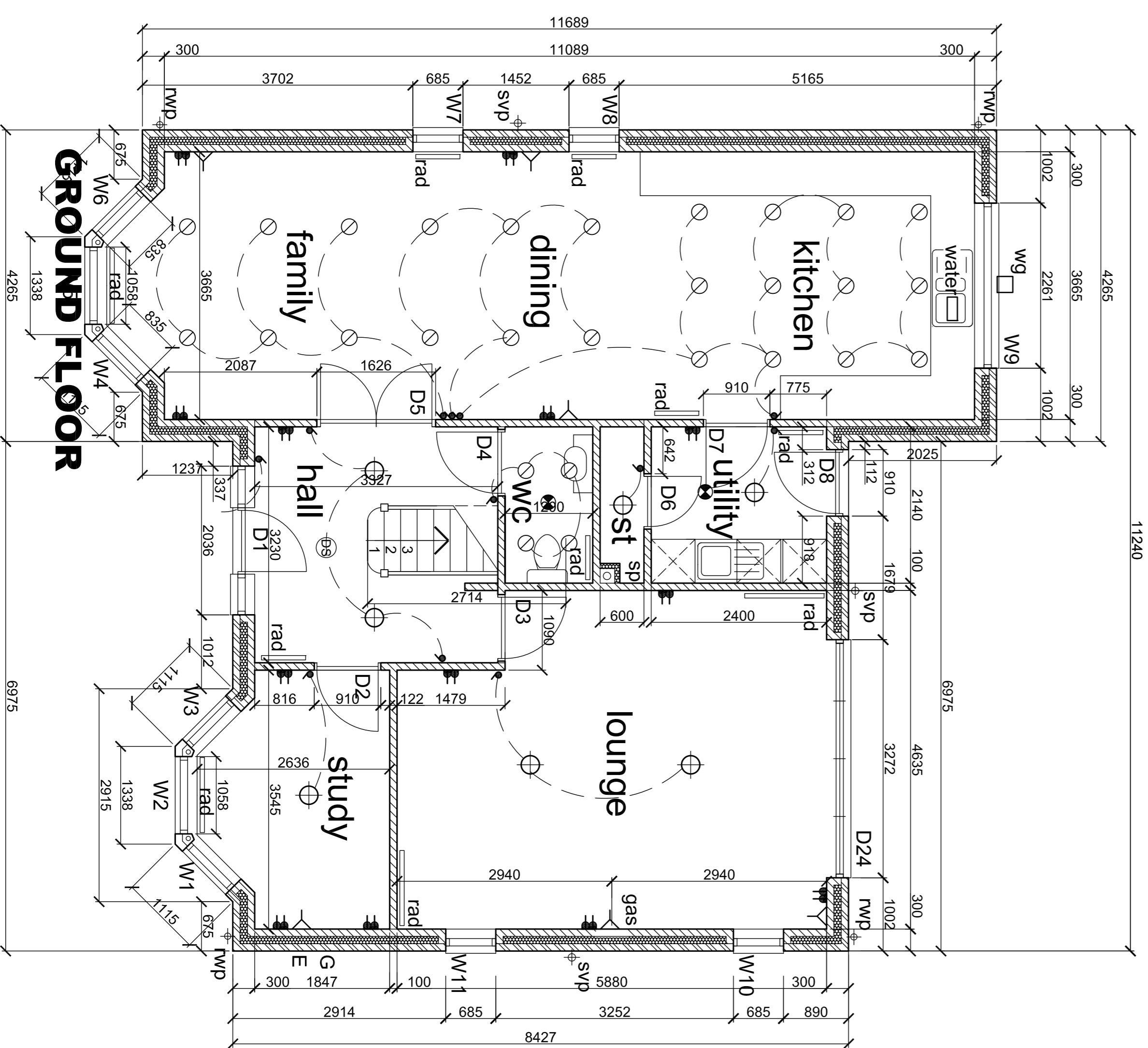
**SIDE ELEVATION**



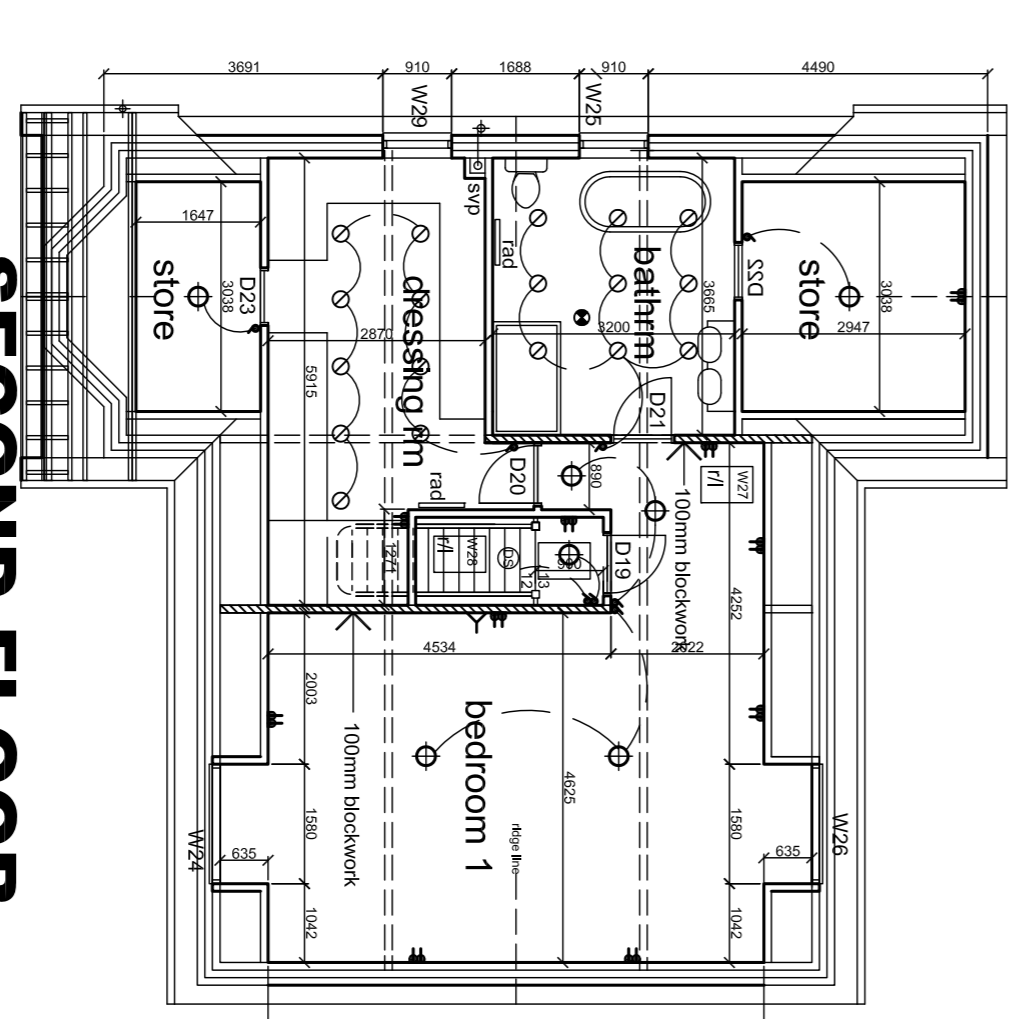
**SECTION A**



**REAR ELEVATION**



ref	opening width	opening height	lintel	length	notes
W1	835	1350			bay window
W2	1058	1350			bay window
W3	835	1350			bay window
W4	835	1350			bay window
W5	1058	1350			bay window
W6	835	1350			bay window
W7	685	1200			bay window
W8	685	1200			bay window
W9	2250	1050			opaque glazed
W10	685	1050			opaque glazed
W11	685	1050			opaque glazed
W12	910	1200			bay window
W13	910	1200			bay window
W14	835	1350			bay window
W15	835	1350			bay window
W16	1058	1350			bay window
W17	835	1350			opaque glazed
W18	685	1050			opaque glazed
W19	910	1050			opaque glazed
W20	2250	2100			opaque glazed
W21	910	1050			opaque glazed
W22	1810	1200			opaque glazed
W23	1550	1050			opaque glazed
W24	910	1050			opaque glazed
W25	1550	1050			opaque glazed
W26	1550	1050			opaque glazed
W27	780	980			opaque glazed
W28	780	980			opaque glazed
W29	910	1050			opaque glazed



**SECOND FLOOR**

- KEY
- double switched socket
  - fused spur
  - TV aerial point
  - light switch
  - recessed light point
  - pendant light point
  - wall light point
  - consumer unit
  - telephone point
  - boiler switch
  - smoke detector

**Baxterhomes**  
www.baxterhomes.co.uk

**Proposed Housing Development**  
Gradwells Farm  
Copp Lane  
Great Eccleston

Drawing: The Windsor House Type  
Job No: 4667  
Scale: 1:50 / 1:100  
Date: 27-04-2021  
Drawing No: A1  
Revision: F30-01

Copyright © (2014) Pkdx Design Associates Limited. All Rights Reserved.  
All work shall comply with the Building Regulations, Statutory Authority requirements, NHBC requirements  
Suppliers must check all relevant building and site dimensions, details and levels prior to commencing any  
fabrication or site work.