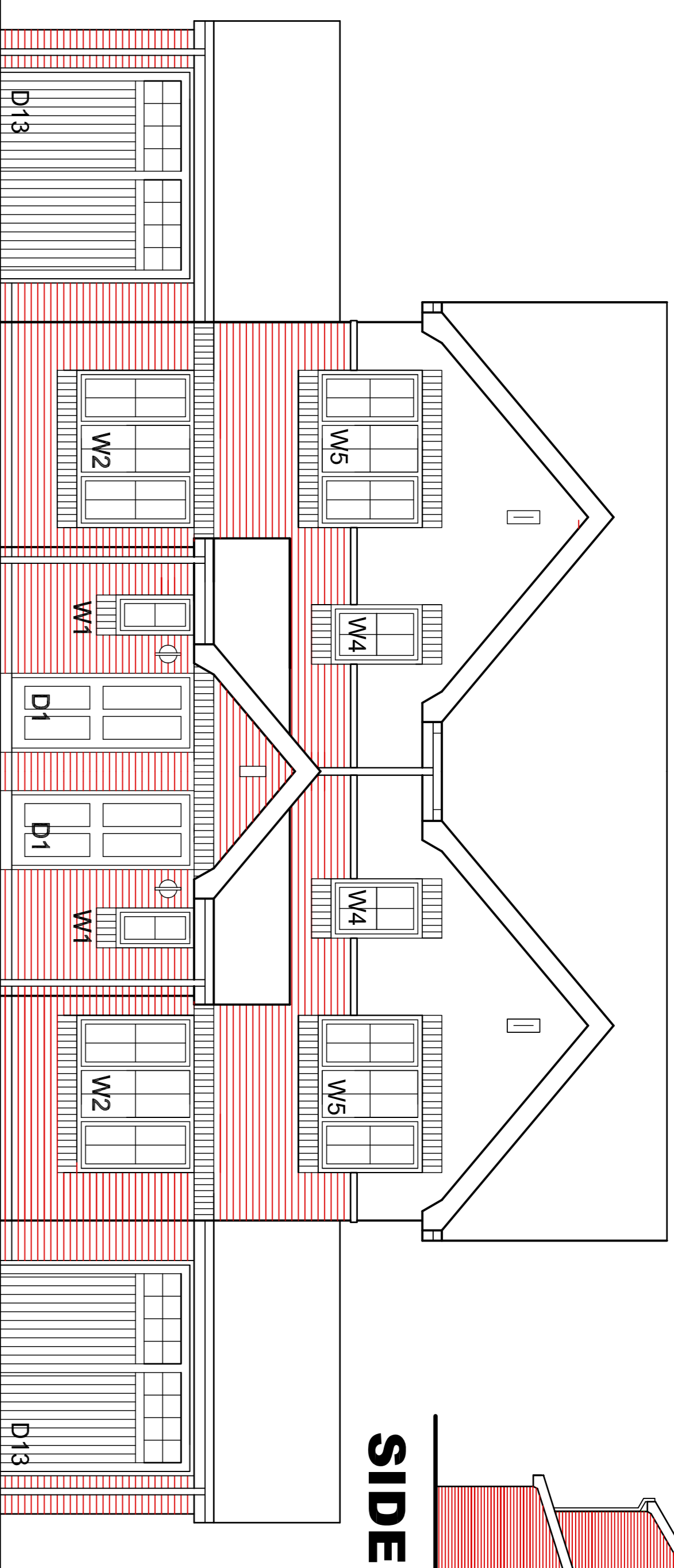
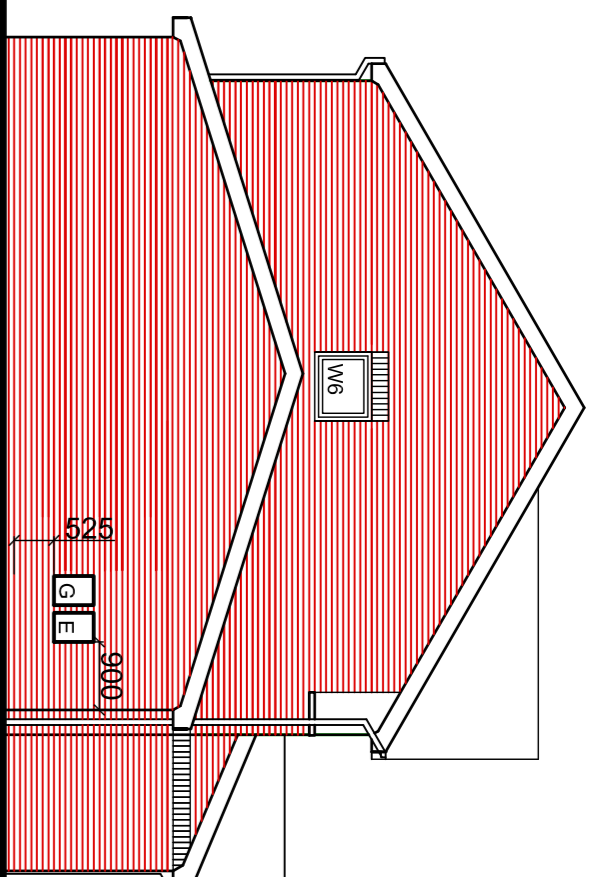


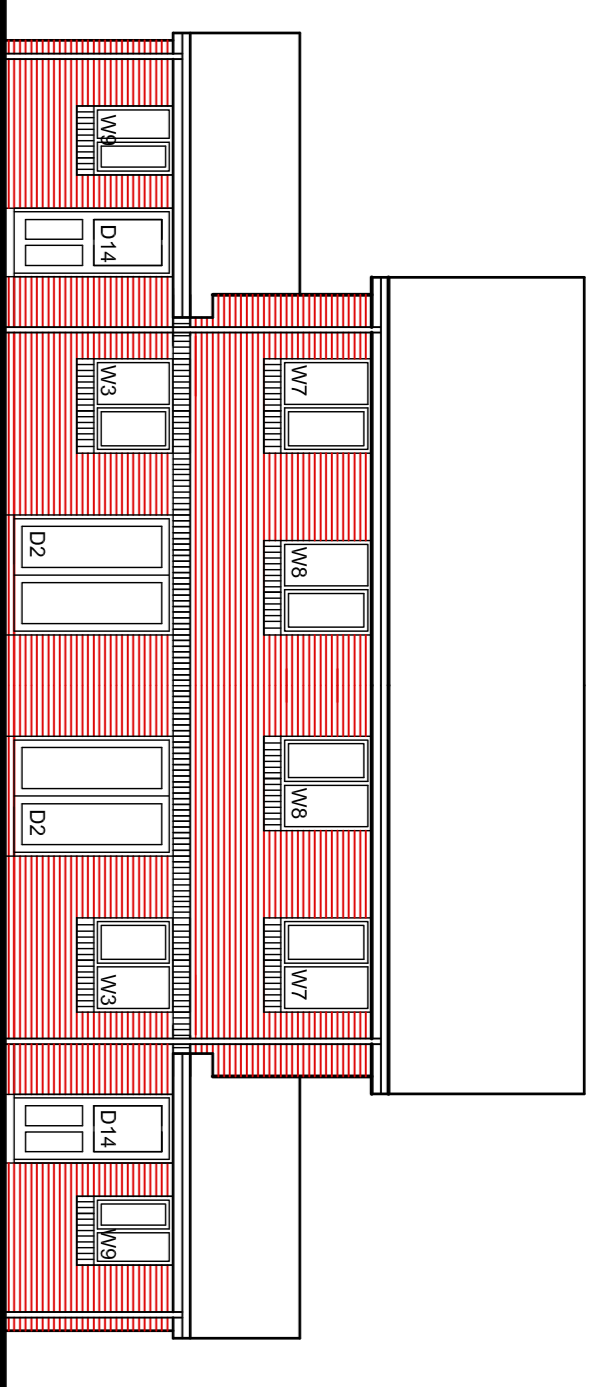
the TUDOR A Plots -



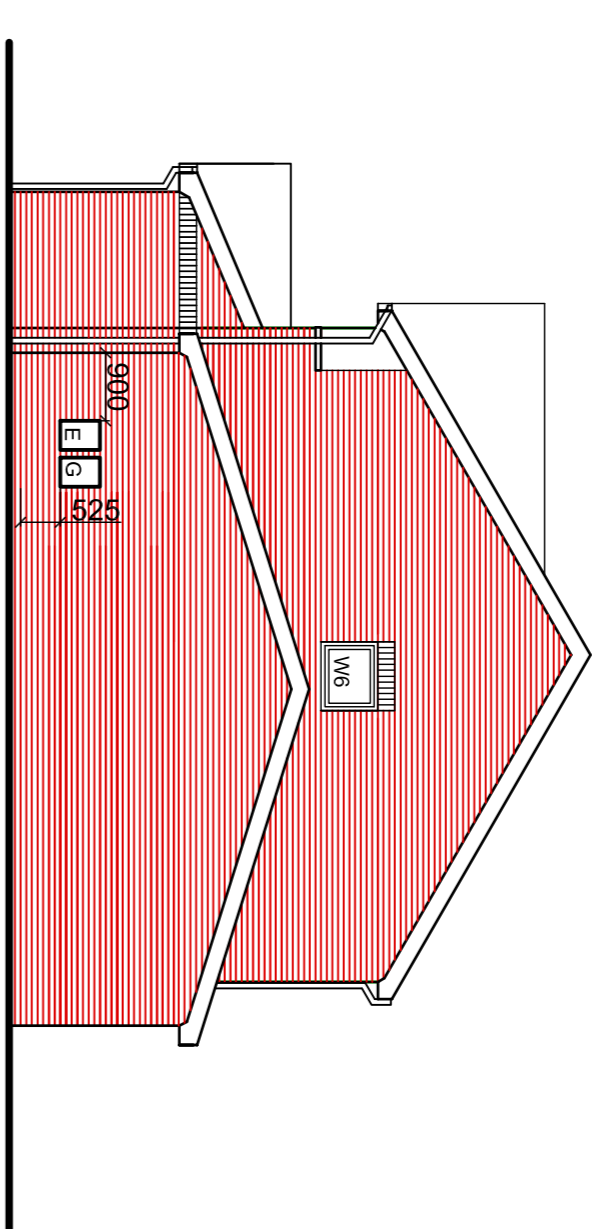
FRONT ELEVATION 1:50



SIDE ELEVATION 1:100



REAR ELEVATION 1:100

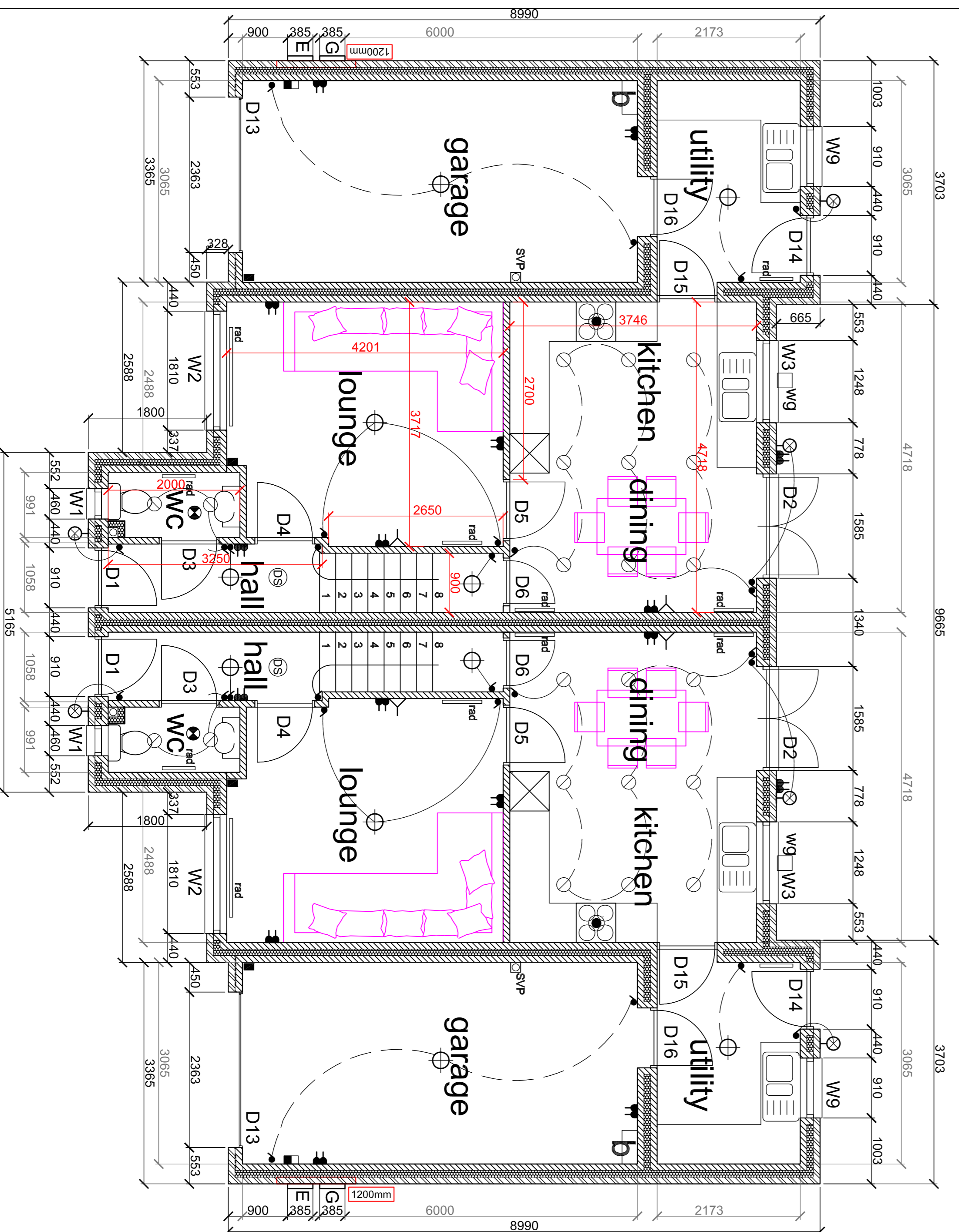


SIDE ELEVATION 1:100

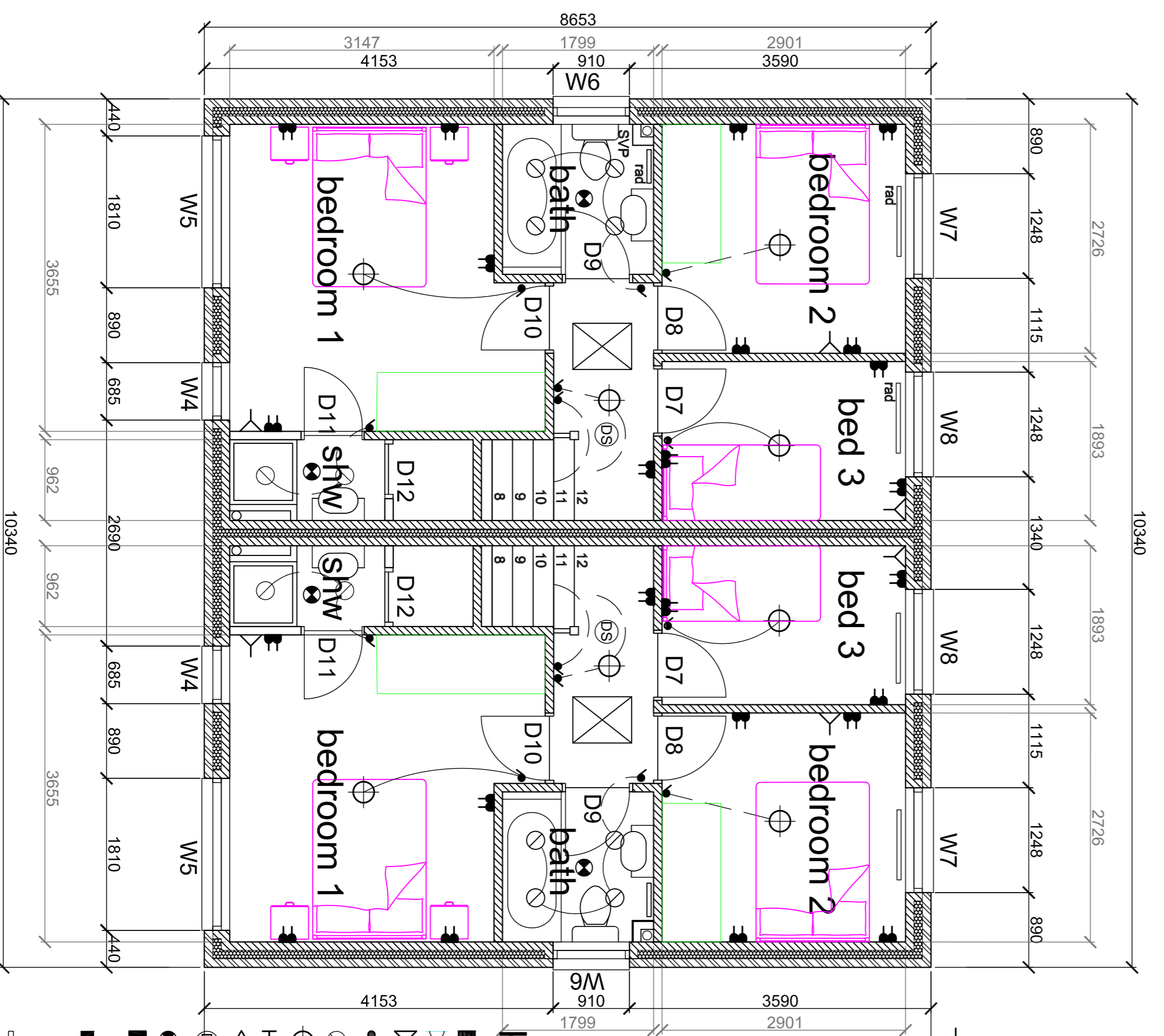
ref	opening	door	notes	initial	length
D1	910	2100	838	PI M access	EL/K-90 1200
D2	1585	2100	885 x 2	patio	S/K-90(CB) 1950
D3	910	2100	838		
D4	910	2100	838	hair glazed	
D5	910	2100	838	store	
D6	726	2100	654		
D7	838	2100	782		
D8	838	2100	782		
D9	838	2100	782		
D10	838	2100	782		
D11	738	2100	686		
D12	2363	2250	2313	garage	
D13	910	2100	838	exterior utility	
D14	910	2100	838		
D15	910	2100	838		
D16	910	2100	838		

ref	opening	opening notes	initial	length
W1	460	1050	obscure glazed	S/K-90 750
W2	1810	1200		S/K-90(CB) 2100
W3	1248	1050		S/K-90 1650
W4	1810	1200		S/K-90 2100
W5	1810	1200	obscure glazed	S/K-90 2100
W6	910	1050		EL/K-90 1200
W7	1248	1200		EL/K-90 1650
W8	1248	1200		EL/K-90 1650
W9	910	1050		EL/K-90 1200

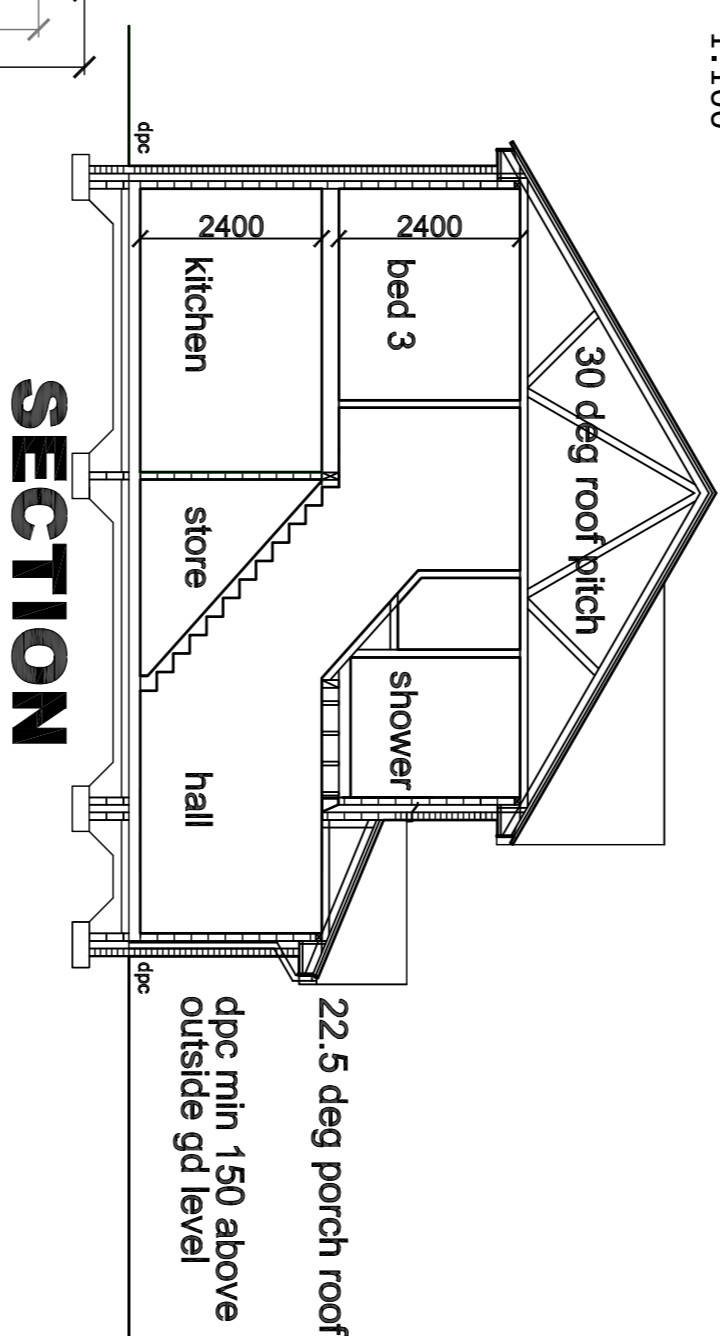
ref	opening	opening notes	initial	length
E.G.	385 x 2	525	Single leaf	1200



GROUND FLOOR PLAN 1:50



FIRST FLOOR PLAN 1:50



FLOOR AREA	Floor	SqT
Ground Floor	450	
First Floor	409	
Garage	2400	
Utility	2550	
GIFA	859	

- KEY**
- double switched socket
 - fused spur
 - TV aerial point
 - light switch
 - recessed light point
 - pendant light point
 - wall light point
 - telephone point
 - smoke detector
 - ceiling extractor
 - electric vehicle charging point
 - ONT (fibre box)



Baxter homes
www.baxterhomes.co.uk

Proposed Housing Development
Gradwells Farm
Copp Lane
Great Eccleston

The Tudor A House Type

job no. 4667
scale 1:50, 1:100
date 29-04-2021

drawing no. A1
drawing no. F215-01

check. MAG
issue. RJB

All dimensions are to be checked on site prior to commencing any works. Any discrepancies are to be reported immediately to the Supervisor.
This drawing is the property of Baxter Homes and shall not be used for any other purpose without the written consent of Baxter Homes.
The information contained herein is for information only and is not intended to constitute an offer of any financial product or service.
The information contained herein is for information only and is not intended to constitute an offer of any financial product or service.