

**LIGHTING NOTES:**

**SAFETY, HEALTH AND ENVIRONMENTAL INFORMATION**  
IN ADDITION TO THE HAZARDS/RISKS NORMALLY ASSOCIATED WITH THE TYPES OF WORK DETAILED ON THIS DRAWING, NOTE THE FOLLOWING SIGNIFICANT RISKS (REFERENCE SHALL ALSO BE MADE TO THE DESIGN RISK ASSESSMENT)

1. UNKNOWN UTILITIES MAY BE PRESENT - ANY UTILITIES SHOWN ARE INDICATIVE. CONTRACTOR MUST REFER TO UP TO DATE UTILITY PLANS.
2. REFER TO WLC481-1300-001 RISK ASSESSMENT.

**SYMBOL QUANTITY**

LC	LC	6
----	----	---

**PROPOSED COLUMN AND LANTERN**

**COLUMN:**  
6m TUBULAR GALVANISED STEEL ROOTED LIGHTING COLUMN FINISHED BLACK RAL9005 WITH FLUSH DOOR.  
WELDED MERRISON DEEPBOWL WITH BLACK LIGHT SHIELDING

**LANTERN:**  
36 LED 3000K WARM WHITE  
4.00m  
30W  
FORWARD THROW  
WELDED SWAN NECK BRACKET

**LANTERN MOUNTING:** 0°  
**LANTERN INCLINATION:** 0°  
**CONTROL GEAR REF:** LED ELECTRONIC DRIVER  
**ISOLATOR:** CHARLES ENDRECHT DOUBLE POLE ISOLATOR  
**SWITCHING:** 8MM DUSK TO DAWN PHOTOCELL  
**SUPPLY:** PRIVATE SUPPLY

**FEEDER PILLAR 1:**  
PROPOSED FUSEY DIAMOND 400/700 SINGLE DOOR FEEDER PILLAR TO HOUSE ELECTRICAL SUPPLY CUT-OUT AND PROPOSED CONSUMER UNIT.

**CABLING AND DUCTING - 1 WAY:**  
100MM HDPE ORANGE DUCT FOR PRIVATE CABLE NETWORK LAID AT A MINIMUM COVER OF 400MM IN FOOTPATH. (DAMP XLPE/PVC/SWA 3 CORE CABLE)

**PROPOSED EARTH ROD:**  
EARTH ROD TO BE INSTALLED TO CONFORM WITH BS7671 AND BS7430.  
AN EARTH ELECTRODE SHALL BE CONNECTED TO THE COLUMN USING 16MM PVC SINGLE SLEEVE CABLE (BS 6843/44/45). THE ELECTRODE SHALL BE A MINIMUM 2.0M LONG, 20MM Ø OVERALL AND MANUFACTURED FROM COPPER COVERED STEEL ROD. THE ROD HEAD SHALL BE DRIVEN TO 400MM BELOW GROUND LEVEL AND CONNECTED TO THE EARTHING CONDUCTOR BY A MECHANICAL CLAMP INSIDE PURPOSE MADE PRE-CAST CONCRETE CHAMBER. EARTH ELECTRODE CLAMP TO BE PROTECTED WITH WATERPROOF TAPE. THE FLUSH FITTING COVER SET AT FINISHED GROUND LEVEL. THE RESISTANCE OF THE EARTH ELECTRODE SHALL NOT BE MORE THAN 20 OHMS WHEN MEASURED.

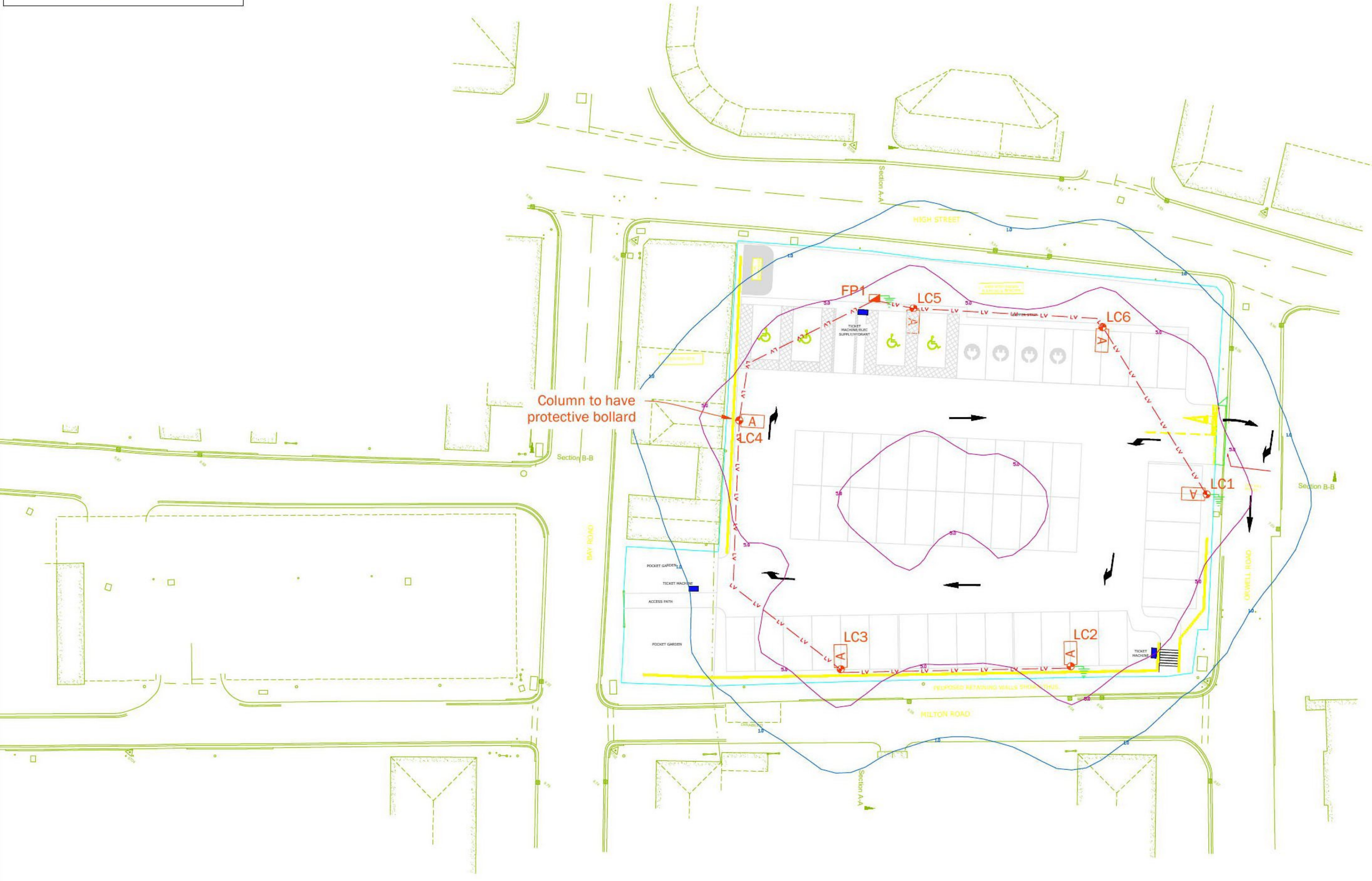
**LIGHTING CALCULATION DETAILS:**  
THE PROPOSALS HAVE BEEN DESIGNED TO MEET THE REQUIREMENTS OF THE FOLLOWING TARGET LIGHTING CLASSES: LIGHT TRAFFIC CAR PARK IN ACCORDANCE WITH BS 5489-2:2020.

**LEVELS ACHIEVED:**  
REFER TO WLC481-1300-001 LIGHTING CALCULATIONS.

**LUX CONTOUR LINES:**

SYMBOL	DESCRIPTION
	1.00 LUX CONTOUR LINE
	5.00 LUX CONTOUR LINE

- LIGHTING NOTES:**
1. THE PROPOSALS HAVE BEEN DESIGNED TO MEET THE REQUIREMENTS OF THE FOLLOWING TARGET LIGHTING CLASSES: LIGHT TRAFFIC CAR PARK
  2. THIS DESIGN HAS BEEN PREPARED IN ACCORDANCE WITH HEA/HEMSA GUIDANCE NOTE - CONDO 15 REGULATIONS, ISSUE 1.1, DATED 09/04/15
  - 2.1. PROCEDURE 1 - DETAILED DESIGN - BASED ON INFORMATION PROVIDED BY THE CLIENT
  3. REFER TO DESIGNERS HAZARD ELIMINATION AND MANAGEMENT DOCUMENT (REF: WLC481-1300-001 RISK ASSESSMENT)
  4. ALL APPARATUS TO BE:
    - 4.1. INSTALLED AND TESTED IN COMPLIANCE WITH BS7171 LATEST EDITION.
    - 4.2. NUMBERED / LABELLED AS AGREED WITH DEVELOPMENT ENGINEER.
    - 4.3. NEW AT THE TIME OF INSTALLATION AND SUPPORTED BY RELEVANT MANUFACTURERS GUARANTEES AND DATA SHEETS.
  5. ALL WORKS SHOULD BE CARRIED OUT BY A SUITABLY QUALIFIED AND COMPETENT PERSONS IN ACCORDANCE WITH BUT NOT LIMITED TO, GS39 'WORKING IN THE VICINITY OF DNO EQUIPMENT', WORKING AT HEIGHT REGULATIONS, 'ELECTRICITY AT WORK REGULATIONS', SAFE DIGGING PRACTICES (SISG) 'AVOIDING DANGER FROM UNDERGROUND SERVICES' AND 'CODE OF PRACTICE FOR ELECTRICAL SAFETY AND HIGHWAY ELECTRICAL OPERATIONS'
  6. IT IS THE RESPONSIBILITY OF THE INSTALLING ORGANISATION TO UNDERTAKE FINAL DUE DILIGENCE AND DETERMINE THE EXACT LOCATION OF ANY STATUTORY UNDERGROUND SERVICES PRIOR TO THE COMMENCEMENT OF ANY CONSTRUCTION WORKS ON SITE. ANY UTILITIES INDICATED ARE INDICATIVE ONLY.
  7. CONTRACTORS SHOULD SATISFY THEMSELVES THAT ANY UTILITY DRAWINGS AFFECTING THE SCHEME ARE ACCURATE AND UP TO DATE FROM THE COMMENCEMENT OF CONSTRUCTION WORKS. IN SOME CIRCUMSTANCES, TRIAL HOLES OF A SUITABLE SIZE ARE TO BE DUG BEFORE PLANNED INSTALLATION OF ANY COLUMNS.
  8. ISO-LUX CONTOUR LINES SHOWN ARE INDICATIVE.
  9. ALL COLUMNS ARE TO BE AT REAR OF FOOTWAY / SERVICE STRIP OR AT CLEARANCE INDICATED, IF COLUMNS CANNOT BE INSTALLED AS SET OUT IN THIS DRAWING THEN THE DESIGNER IS TO BE CONSULTED FOR ALTERNATIVE POSITIONS.
  10. CONSTRUCTION SHOULD NOT BE STARTED UNTIL PLANNING PERMISSION HAS BEEN GRANTED BY THE AUTHORITY. ANY WORKS TAKING PLACE PRIOR TO APPROVAL SHALL BE AT THE DEVELOPERS RISK.



REV:	FIRST ISSUE	PW	31.03.21
DESCRIPTION:		BY:	DATE:

STATUS: **FOR APPROVAL**

Williams Lighting Consultants Ltd.



SITE: MILTON ROAD DOVERCOURT

TITLE: PROPOSED CAR PARK LIGHTING LAYOUT

SCALE AT A1:	DATE:	DRAWN:	CHECKED:
1:500	31.03.21	PW	LD
PROJECT NO:	DRAWING NO:	REVISION:	
WLC481	WLC481-1300-001	-	