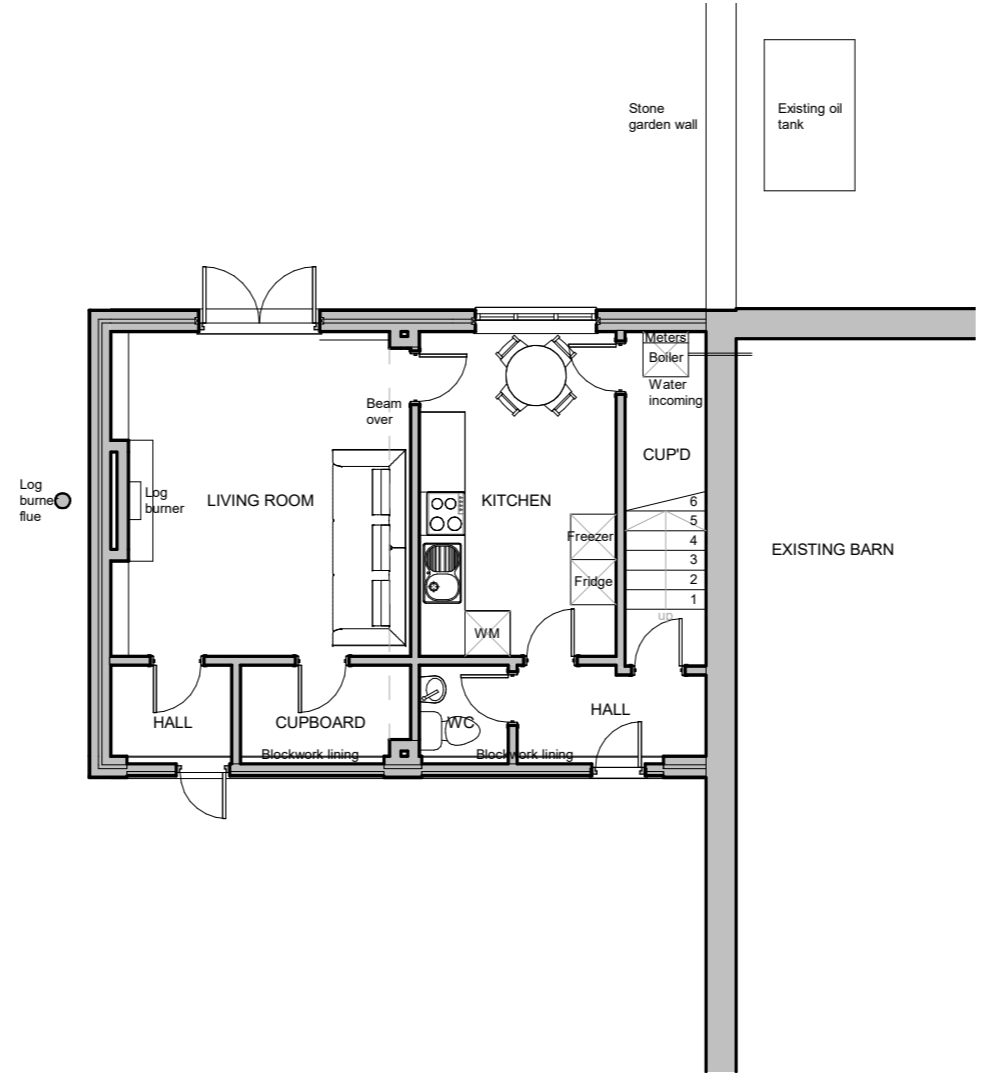


This drawing is COPYRIGHT. It must not be reproduced or disclosed to third parties without our prior permission. Do not scale from this drawing, or, interrogate and use electronic information.

Any discrepancies should be reported immediately.

Any surveyed information incorporated within this drawing cannot be guaranteed as accurate unless confirmed by a fixed dimension. All dimensions are in millimetres unless noted otherwise.



Existing Ground Floor Plan
1 : 100



Head Office
29 Broad Street
Newtown
Powys
SY16 2BQ
t - 01686 610311
w - www.hughesarchitects.co.uk

Project :- Two Storey Extension to Existing Dwelling at Dyffryn Barn Cottage, Llanwrthwl, Powys, LD1 6NU			
Drawing Status :- Stage 3a: Planning		Drawing Title :- Existing Ground Floor Plan	
Scale :- 1 : 100	Date :- 01.03.21	Drawing No :- W013.3a. 3.100	Rev :-
Drawn by :- NB	Checked :- DH		