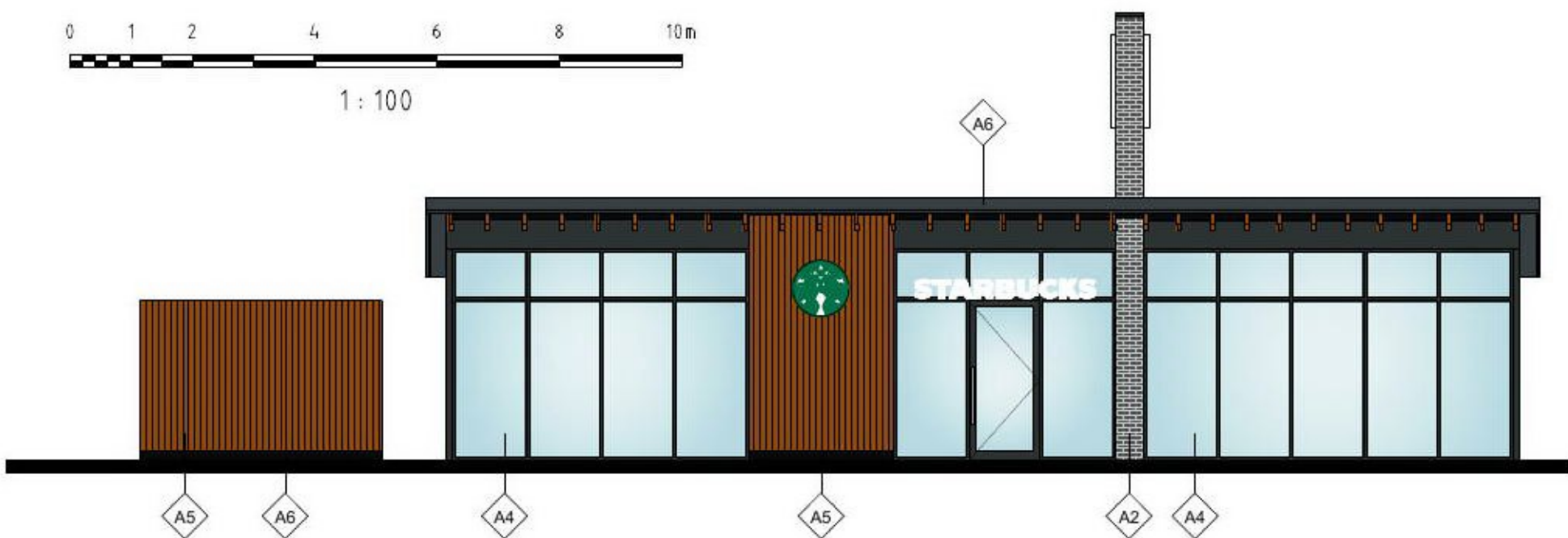
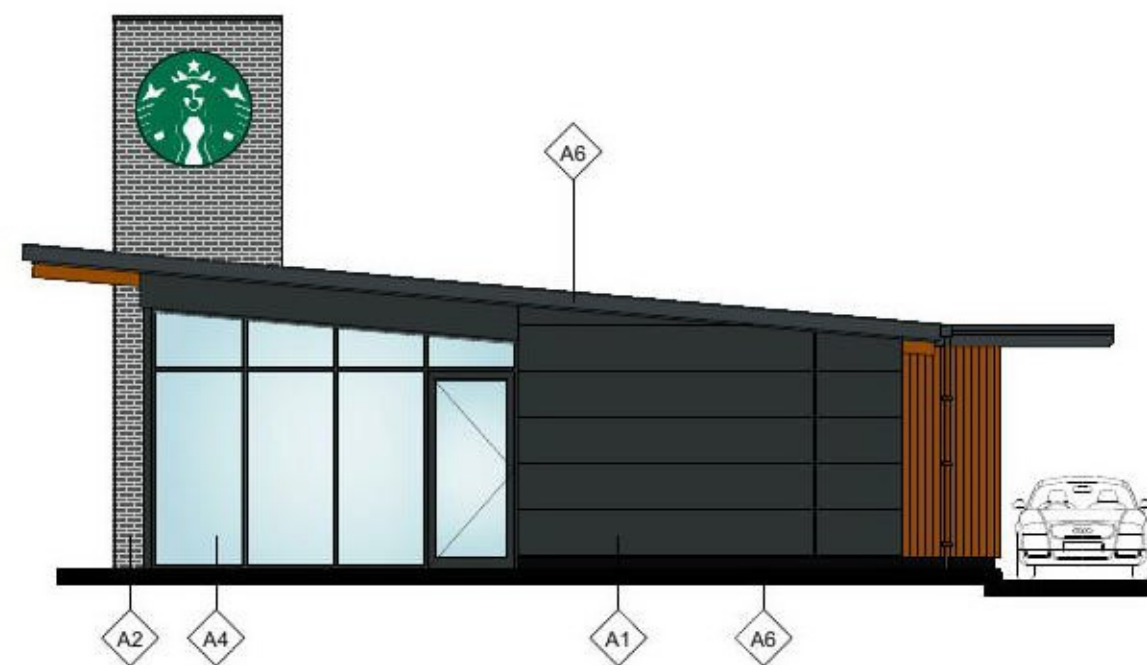


0 1 2 4 6 8 10m

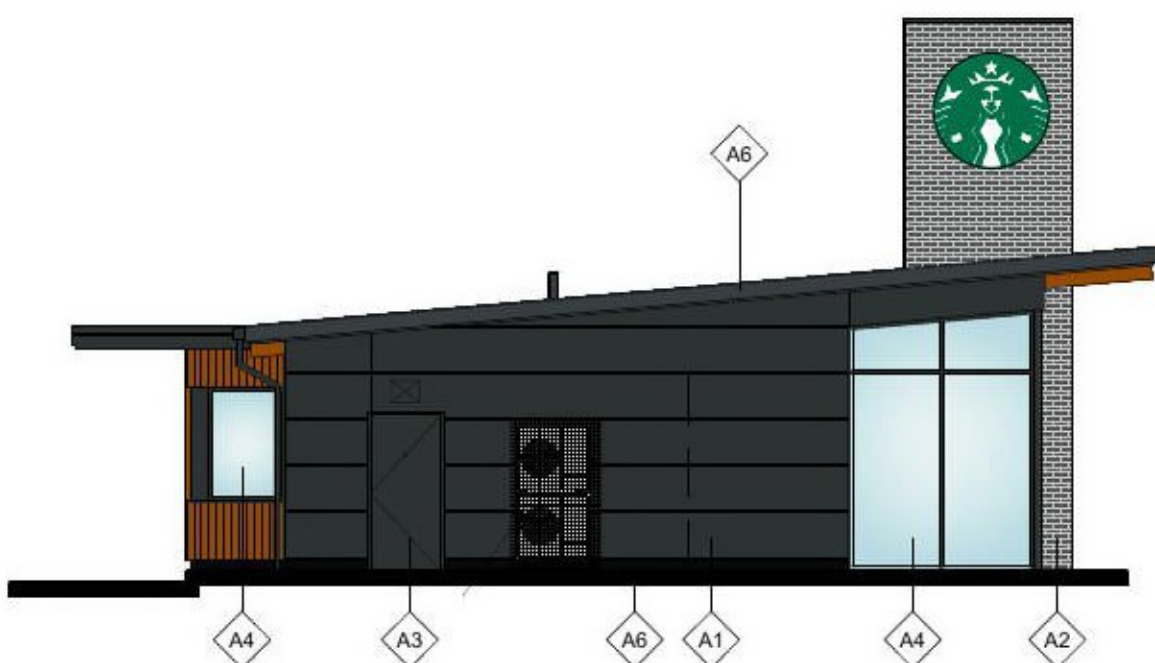
1:100



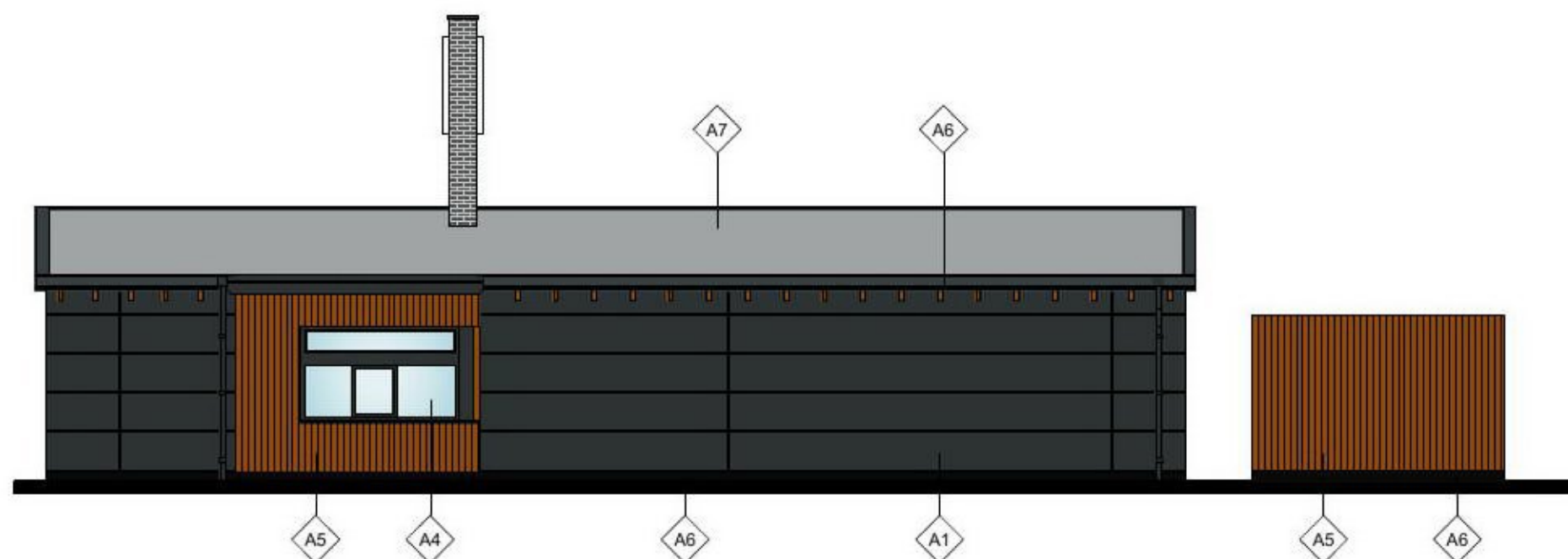
West Elevation



South Elevation



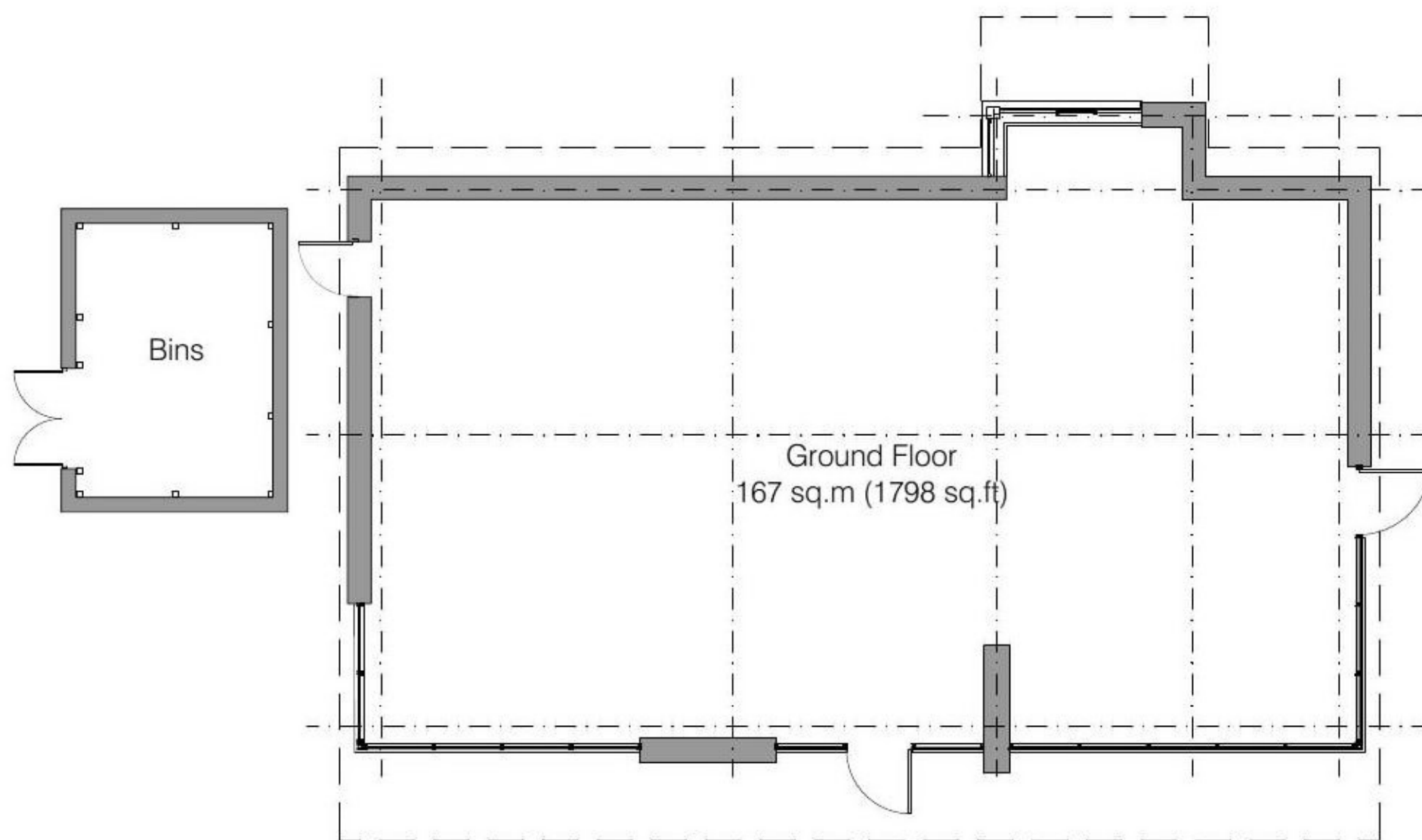
North Elevation



East Elevation

MATERIALS LEGEND:

- A1 600mm high 100mm thick Kingspan Cladding panels  
Folder/Mitred corners, hidden fixings  
Exact details TBC
- A2 Weinerberger Corium System  
Compatible clay facing brick slips
- A3 Ply flush solid core single leaf door and frame with outer face clad with Dark Grey RAL 7021 powder coated galvanised mild steel sheet
- A4 Thermally broken Aluminium powder coated shopfront frames colour RAL 7021  
Double glazed with glazing to south and south west to have solar vinyl fitted
- A5 Accoya LT AC 02 Profiled Acetylated Vertical Boards - Profile ref: VT9B
- A6 150mm high by 3mm thick Aluminium skirting around base of pod  
Powder coated black RAL 9005
- A7 Renolit Alkorsmart Single Ply Light Laminated Membrane  
Colour Grey
- A8 3mm Aluminium Profiled Verge Fascia  
Colour Dark Grey RAL 7016



Ground Floor Plan

Planning Drawing

rev.	date	drawn	chk'd
 <b>Gould Singleton Architects</b> Earls Way, Halesowen, West Midlands, B63 3HR			
scales	1:100@A2	Proposed Retail & Trade Development Old Gas Works Site Old Road Clacton On Sea	
date	May 2021		
number drawn	DB	checked	GSA
	18-1704/204	Proposed Plans & Elevations - A3 Restaurant	

This drawing and the building works depicted are the copyright of the Architects and may not be reproduced except by written permission. This drawing must be read and checked against any specialist drawings and information provided. Do not scale prints. Figured dimensions only to be taken from this drawing.