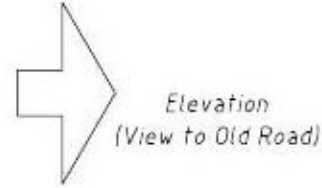
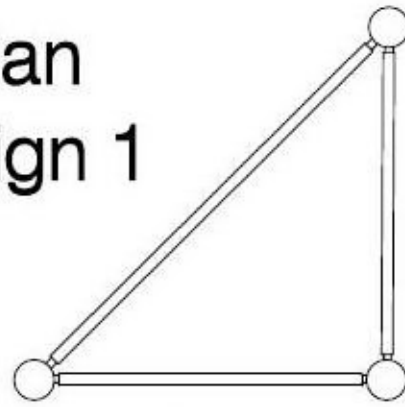


# Plan Sign 1

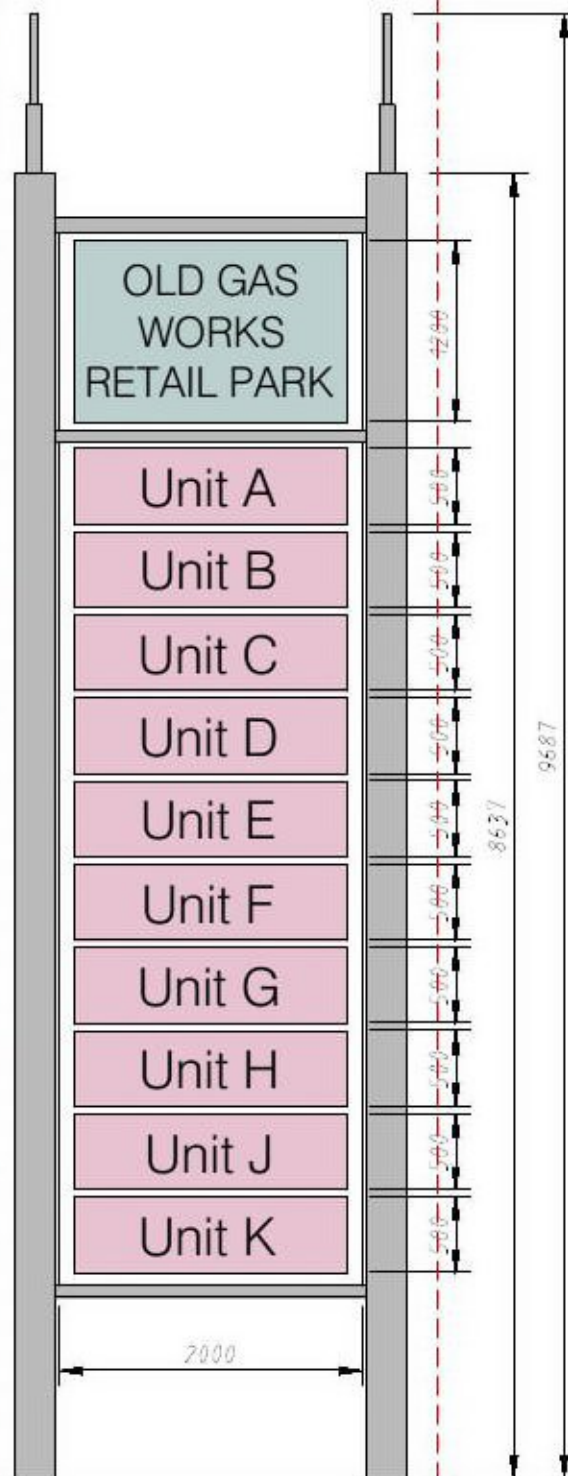


Outline of Totem Sign approved under Planning Permission 19/00338/FUL

Text, size, style, logos and colour subject to agreement.  
Proposed Tenant Logo and signage subject to separate Approval  
NOTE: 2 sided 'triangular' sign (Signs facing to Old Rd).

NOTE: ALL DIMENSIONS NOMINAL AND SUBJECT TO FINAL DESIGN

268mm CHS posts or similar to Struct Engs or specialist signage manufacturers details and design.  
Polyester powder coated steel posts. Colour - Silver.



Foundations to Struct Engs details

# Elevation - Sign 1

## Planning Drawing

Rev B	05.07.21	Sign 2 omitted	DB
Rev A	07.06.21	Outline of previously approved Totem Sign added	DB
rev.	date		drawn/chk'd

**Gould Singleton Architects**  
Earls Way, Halesowen, West Midlands, B63 3HR

1:50@A3 Proposed Retail & Trade Development  
Old Gas Works Site  
Old Road  
Clacton On Sea

DB checked GSA Proposed Site Totem Signs

number/drawn/date/scales  
18-1704/206B



This drawing and the building works depicted are the copyright of the Architects and may not be reproduced except by written permission. The drawing must be read and checked against any specialist drawings and information provided. Do not scale prints. Figured dimensions only to be taken from this drawing.