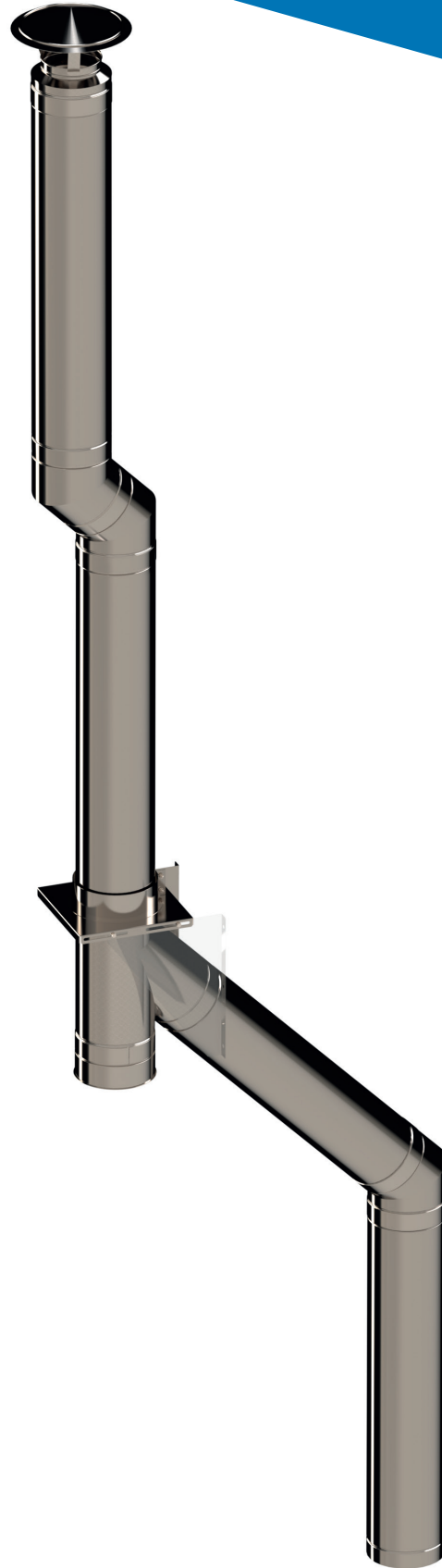


HT-S

2019



Twin Wall HT-S Insulated Flue System

For: Multi-fuel
Woodburning
Biomass
Pellet
Gas and oil applications

Made in the UK
100mm to 300mm available
from stock
Powder Coated Stock available

0333 456 8000
www.midtherm.co.uk

**Midtherm**
Flue Systems Ltd.

Twin Wall HT-S

High Temperature Insulated Flue System

Designed with a sleek modern appearance, easy and consistent connection, with laser welded seams and machine formed joints using the latest techniques and technology.

HT-S products are all manufactured and stocked at our factory in the United Kingdom allowing for fast delivery and on-demand manufacturing for any special requirements.

- *Suitable for: Gas and Oil
Solid Fuel
Multi-fuel
Pellet
Biomass*
- *Available from stock in 100mm to 300mm, 350mm made to order*
- *130mm and 150mm Matt Black available from stock*
- *4 hour fire rating, with 450 Degrees C operating temperature*
- *Constructed from stainless steel 0.5mm 316 2b inner and 0.5mm 304 BA outer*



100mm to 300mm available from stock. 130mm and 150mm Powder Coated Matt Black in stock. Locking Bands included on all components with male connectors.

10 Year Warranty

Available for registered and properly maintained HT-S installations, please see our website for full details, requirements and registration.

Quality Assurance

Midtherm HT-S is manufactured under our ISO 9001 accredited quality management system, with CE Certification, and we are also a HETAS Registered manufacturer.



HT-S Specification

Internal Diameter	Product Dia. Order Code	04	05	06	07	08	10	12	14
	I/D mm	100	130	150	180	200	250	300	350
External Diameter	Ancillaries Dia. Order Code	06	07	08	09	10	12	14	16
	O/D mm	152	178	203	229	254	305	356	406

Construction	Precision rolled and laser welded pipe, continuous seam weld on bends. Lining material - 0.5mm 316 (EN1,4404). Casing material - 0.5mm 304 (EN1.4301) bright annealed. Insulation type - high density mineral wool 128kg/m3 25mm thick.	
Max Operating Temp	450 degrees C normal operating. Soot fire resistance 1000 degrees C.	4 Hour Fire Rating.

HT-S Designations

Designation Type	Product BS EN 1856-1 System Chimney	Corresponding Installation BS EN 1443
Solid Fuel (100-300mm)	T450 N1 D Vm L50050 G(50)	T450 N1 D V3 G(50)
Solid Fuel (350mm)	T450 N1 D Vm L50050 G(75)	T450 N1 D V3 G(75)
Gas, Oil < 40Pa	T200 N1 D Vm L50050 O(30)	T200 N1 D V3 O(30)
Gas, Oil > 40Pa (with sealant)	T200 P1 D Vm L50050 O(30)	T200 P1 D V3 O(30)
Please Note:	Designations only apply to systems installed in compliance with the appropriate installation instructions.	

Product Codes included in this brochure

Product	Code No	Notes
HT-S	08	100mm through to 350mm
HT-S Powder Coated Matt Black	41	Other colours and items available
Universal Ancillary Components	00	Size on the outer diameter of the flue
Rotorvent	36	See Page 11

Powder Coating

Powder Coated products are available and can be used in visible areas of installations.

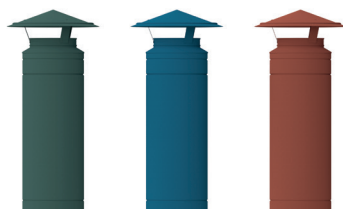
130mm and 150mm HT-S powder coated Matt Black flue (PCMB) components are available from stock, and we are also able to powder coat any of our products to your requirement.

High temperature powder coating, which has a slightly different finish to the standard powder coating, is used on certain products in the powder coated Matt Black range (where there is direct connection onto the stove or in close proximity to the stove). If this variation is not acceptable for particular projects we recommend ordering the full exposed system in the higher temperature PCMB finish.

Please call us to discuss your requirements.

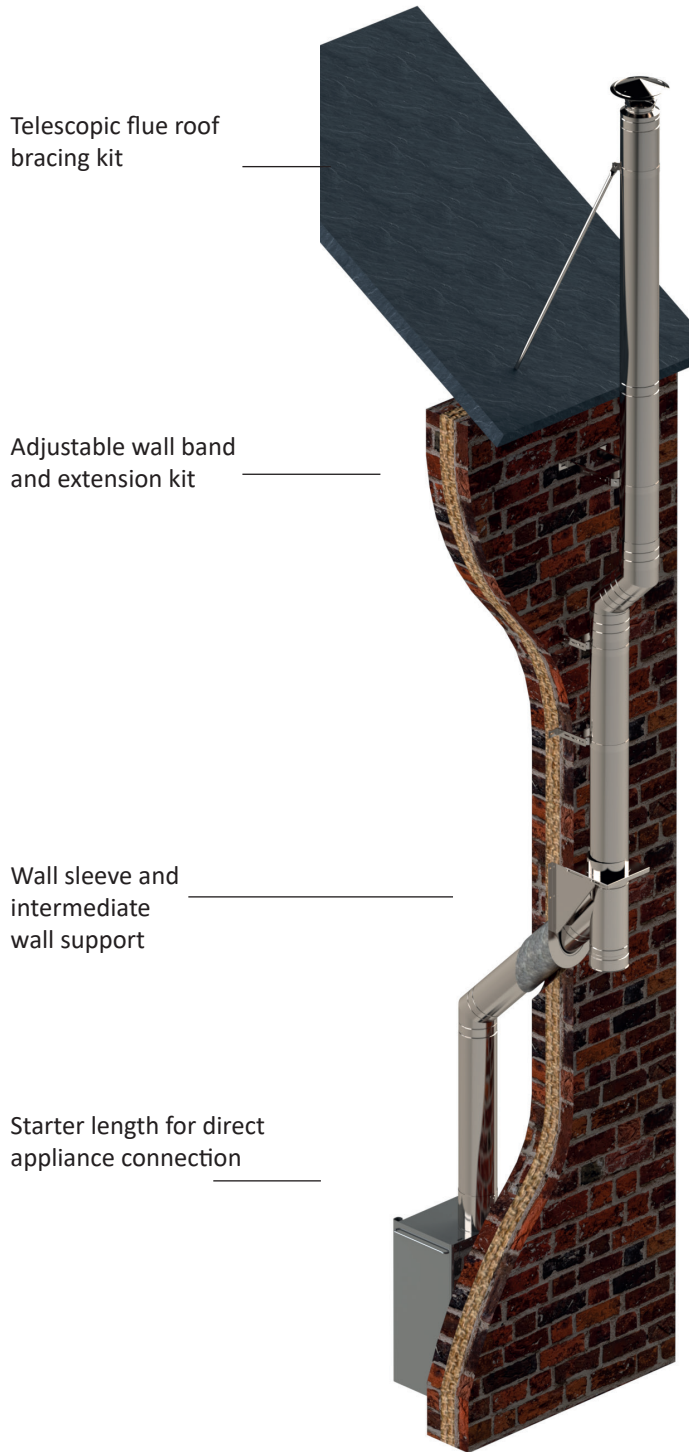


Products powder coated **High Temperature** Matt Black will have this icon showing.

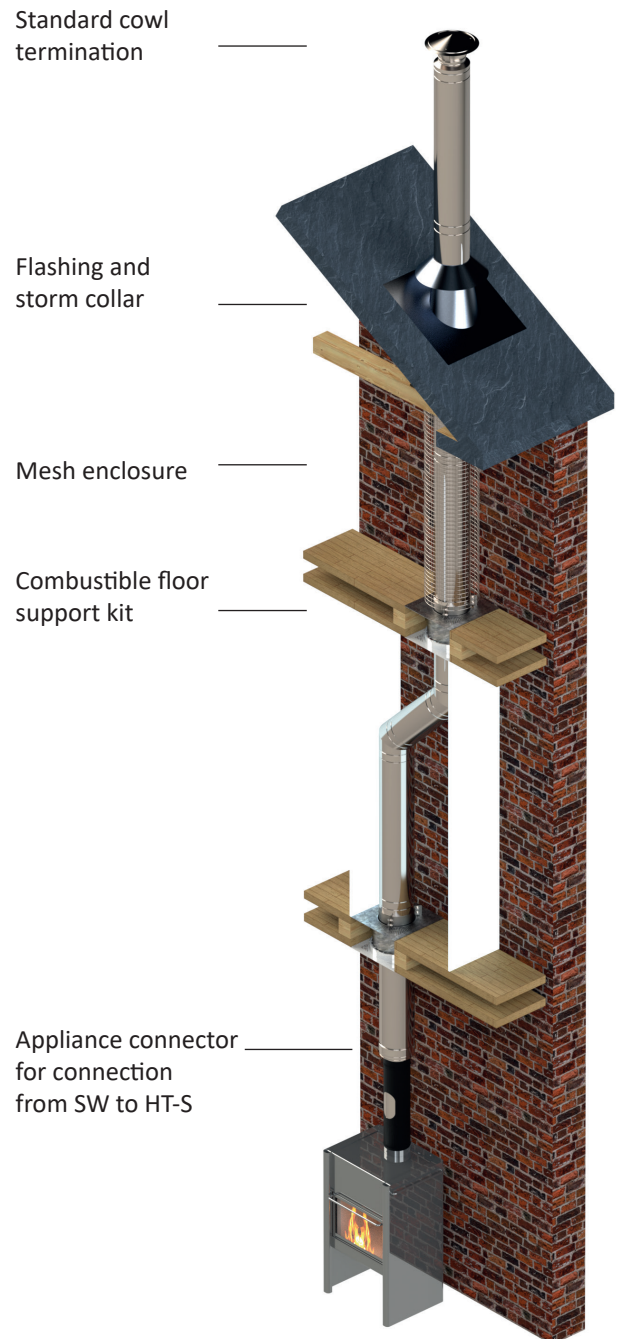


Typical Installations

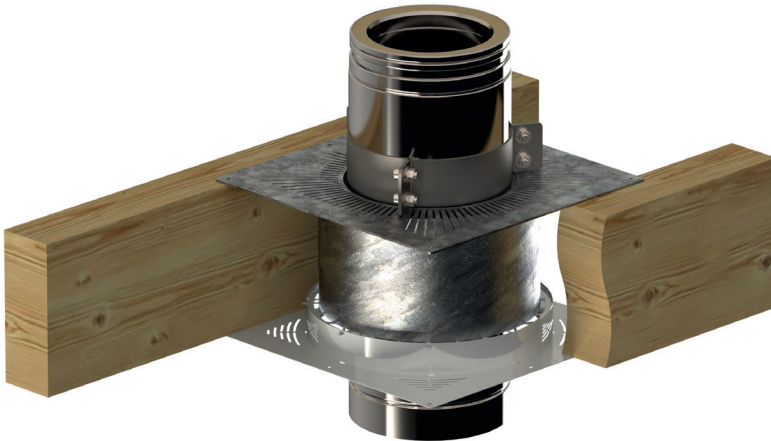
External Installation



Internal Installation



Flue systems are designed to safely and legally carry away toxic fumes and exhaust heat without risk of fire, therefore It is required that all HT-S flue system installations are carried out by accredited installers and in compliance with all current regulatory requirements.



To comply with BS EN 1856-1, specific requirements exist for anywhere a HT-S flue system penetrates a combustible floor, this is in order to provide ventilation to the space created and prevent excessive heat building up.

To comply with building regulations, a completed data plate must be installed and on display with all new installations.

Order Code 009000

Midtherm
Flue Systems Ltd.

IMPORTANT SAFETY INFORMATION
This label must not be removed or covered

Product Type: System Chimney Metal Liner

Product Name: _____

Installation Designation: EN 1443 - T
Example: EN 1443 - T450-N1-03-G50

Suitable for condensing appliances: Yes No

Distance to combustibles in mm: _____

Nominal Size: 100 150 180 200 250

Product Type: Connecting Flue Pipe

Product Name: _____

Installation Designation: EN 1443 - T
Example: EN 1443 - T450-N1-03-G50

Suitable for condensing appliances: Yes No

Distance to combustibles in mm: _____

Nominal Size: 100 150 180 200

Other: _____ mm

Tel: 0333 456 8000
www.midtherm.co.uk

Property Address: _____

Post code: _____

The Hearth & Chimney installed in the: _____

Are suitable for: _____

Installers Company Name: _____

Installed by: _____

Installed on: _____

Address and Telephone No: _____

Other Information: _____

Barcode: 5092147024870

Carbon Monoxide alarms are required with all installations. We stock the Honeywell XC70 which features a 7 year life span and warranty.

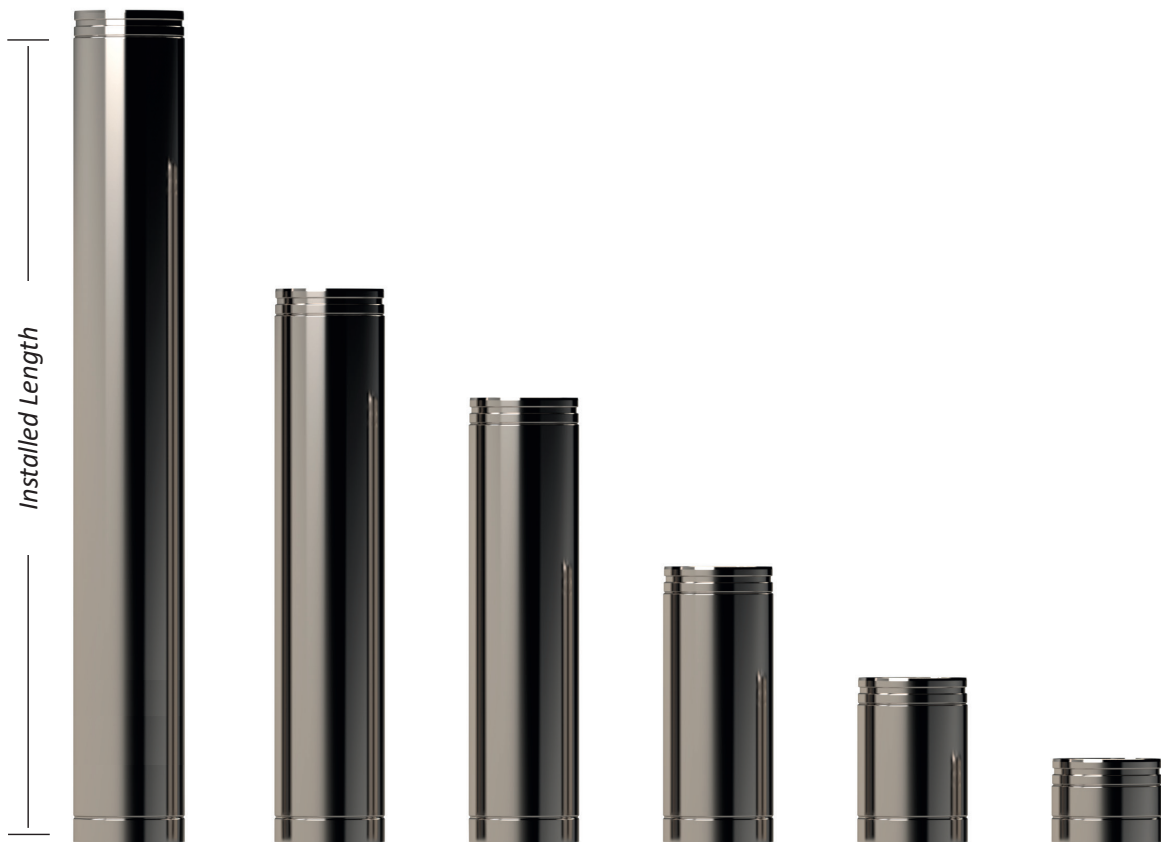
Order Code 009000A



Please contact us or visit our website for:
detailed certification, installation, maintenance and warranty details.

www.midtherm.co.uk, under the product page.

Standard Length		100mm	130mm	150mm	180mm	200mm	250mm	300mm	350mm
1500mm	(1452mm Instl)	080204	080205	080206	080207	080208			
1000mm	(952mm Instl)	080104	080105	080106	080107	080108	080110	080112	080114
800mm	(752mm Instl)	085604	085605	085606	085607	085608			
500mm	(452mm Instl)	080304	080305	080306	080307	080308	080310	080312	080314
300mm	(252mm Instl)	083404	083405	083406	083407	083408	083410	083412	083414
150mm	(102mm Instl)	080304B	080305B	080306B	080307B	080308B	080310B	080312B	



D+ Lengths with 0.9mm Inner Liner

Length	Installed Length	Code
1000mm	955mm	0801**A
500mm	455mm	0803**A

Lengths that can be used in conjunction with an appliance connector with a 0.9mm inner to be installed directly to an appliance.



Extension Length

<i>Installed Length</i>	<i>Code</i>
75mm - 350mm	0804**A
75mm - 150mm	0804**B

The Extension Length comes complete with a special locking band and provides an extension of 75mm to 350mm when slipped over a standard length. This can be used fully with any length starting from 500mm. When used on a 300mm length the minimum extension achieved would be 260mm.
Sold fully insulated.



Starter Lengths c/w 0.9mm Inner Liner and Intergrated Appliance Connector

<i>Length</i>	<i>Installed Length</i>	<i>Code</i>
1000	1095	0801**B
500	595	0803**B
500 C/W Clean Out Door	595	0803**E
1000 (1" Increasing)	1095	0801**C
500 (1" Increasing)	595	0803**C

Starter lengths are designed to be connected directly to an appliance and include an appliance connector and cover band. They are easy to install and give an aesthetically pleasing appearance of a seamless length straight from the appliance.
Please note they are not suitable for appliances with a recessed spigot.



Length with Clean Out Door c/w 0.9mm inner

<i>Installed Length</i>	<i>Code</i>
455mm	0803**D

The length with clean out door comes complete with a 'Wrap Around' outer door that can be removed to allow access to the inner door. This product is to be used when the provision of sweeping through the appliance is not available.
Available from made to order, 130-200mm Internal Diameter

Elbows

90 Degree Elbow

Code 0809**

Diameter Code	04	05	06	07	08	10	12	14
Internal Diameter	100	130	150	180	200	250	300	350
A	153	166	179	191	204	230	255	280
B	197	210	223	235	248	274	299	324

45 Degree Elbow

Code 0810**

A	61	66	72	76	83	93	104	114
B	105	110	115	120	128	138	149	159

30 Degree Elbow

Code 0810**A

A	50	54	58	61	64	71	78	84
B	94	99	102	106	109	116	123	129

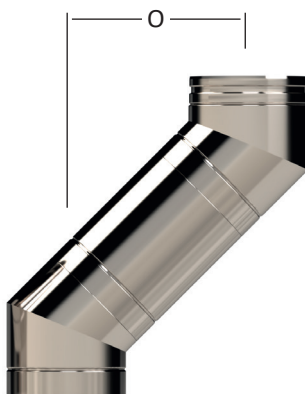
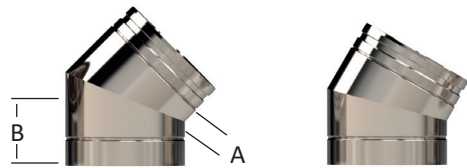
15 Degree Elbow

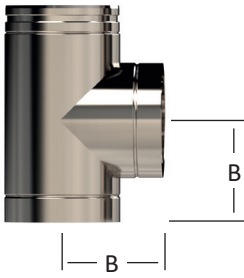
Code 0810**B

A	39	42	44	45	47	50	53	57
B	83	86	88	90	92	95	98	102

Offset Dimensions For Elbows

Diameter Code			04	05	06	07	08	10	12	14
Length	Elbow	Dim	100	130	150	180	200	250	300	350
Without Length	15	O	32	33	33	34	35	37	38	40
		H	240	248	252	259	267	279	291	307
	30	O	71	75	78	82	85	92	99	105
		H	265	280	291	306	317	343	370	392
	45	O	117	124	132	139	147	161	177	191
		H	283	300	318	335	355	389	427	461
150	15	O	58	59	60	61	62	63	65	67
		H	338	346	350	358	366	378	389	405
	30	O	122	126	129	133	136	143	150	156
		H	353	368	380	395	406	432	458	480
	45	O	189	197	204	211	219	233	249	263
		H	355	373	390	407	427	461	499	533
300	15	O	97	98	98	99	100	102	104	106
		H	483	491	495	503	511	523	534	550
	30	O	197	201	204	208	211	218	225	231
		H	483	498	510	525	536	562	588	610
	45	O	296	303	310	317	325	339	355	369
		H	462	479	496	513	533	567	605	639
500	15	O	149	150	150	151	152	154	155	157
		H	676	684	688	696	704	716	728	743
	30	O	297	301	304	308	311	318	325	331
		H	657	672	683	698	709	735	761	784
	45	O	437	444	451	458	467	481	496	510
		H	603	620	637	654	675	709	746	780
800	15	O	228	229	230	230	231	233	234	237
		H	975	981	989	995	1003	1014	1026	1042
	30	O	451	454	458	461	464	471	478	484
		H	928	939	953	965	978	1003	1029	1051
	45	O	653	660	668	675	683	697	713	727
		H	822	840	857	874	894	928	966	1000
1000	15	O	278	279	280	281	282	283	285	287
		H	1159	1167	1171	1179	1187	1199	1210	1226
	30	O	547	551	554	558	561	568	575	581
		H	1090	1105	1116	1131	1142	1168	1195	1217
	45	O	790	797	805	812	820	834	850	864
		H	956	973	991	1008	1028	1062	1100	1134
1500	15	O	407	408	409	410	411			
		H	1642	1650	1654	1662	1670			
	30	O	797	801	804	808	811			
		H	1523	1538	1549	1564	1576			
	45	O	1144	1151	1158	1165	1174			
		H	1310	1327	1344	1361	1382			

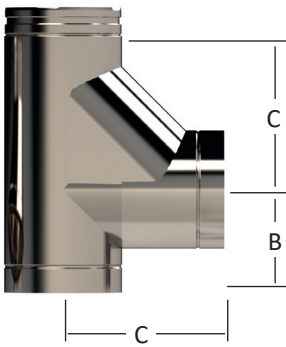




90 Degree Tee

Code 0806**

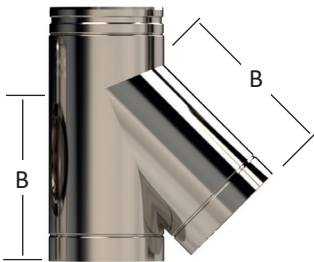
Diameter Code	04	05	06	07	08	10	12	14
Internal Diameter	100	130	150	180	200	250	300	350
Installed Length	294	323	349	373	399	450	501	551
B	151	164	177	189	202	227	253	278



90 Degree Booted Tee

Code 0837**

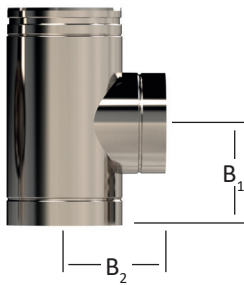
Diameter Code	04	05	06	07	08	10	12	14
Internal Diameter	100	130	150	180	200	250	300	350
Installed Length	398	423	448	474	499	550	601	651
B	150	164	177	190	202	228	253	278
C	248	259	271	284	297	322	348	372



45 Degree Tee

Code 0807**

Diameter Code	04	05	06	07	08	10	12	14
Internal Diameter	100	130	150	180	200	250	300	350
Installed Length	358	395	431	467	502	574	646	717
B	259	290	320	351	382	443	505	565



Modular Tee

Code 0811**

Modular Tees usually include a smaller branch size and are made to order to suit requirements. Please note that 'Installed height' and 'B' dimensions are the same as a 90 degree tee (Installed and B₁ dimensions based on branch diameter, and B₂ is based on body diameter)

Tee Cap

Code 0808**

Diameter Code	04	05	06	07	08	10	12	14
Internal Diameter	100	130	150	180	200	250	300	350
Installed Length	70							



Tee Cap with 3/4" BSP Drain Point

Code 0808**A

Diameter Code	04	05	06	07	08	10	12	14
Internal Diameter	100	130	150	180	200	250	300	350
Installed Length	70							





Standard Cowl

Code 0816**

Standard Cowl With Mesh

Code 0816**A

Double Inverted (DI Cowl)

Code 0817**



<i>Diameter Code</i>	04	05	06	07	08	10	12	14
Internal Diameter	100	130	150	180	200	250	300	350
Top Diameter	210	260	300	360	400	500	600	700
O/All Height	220	235	255	280	290	315	340	365

Rain Shield (RS Cowl)

Code 0816**B



<i>Diameter Code</i>	04	05	06	07	08	10	12	14
Internal Diameter	100	130	150	180	200	250	300	350
Top Diameter	210	260	300	360	400	500	600	700
O/All Height	220	235	255	280	290	315	340	365

Swedish/Universal Cowl

Code 0818**



<i>Diameter Code</i>	04	05	06	07	08	10	12	14
Internal Diameter	100	130	150	180	200	250	300	350
Top Diameter	200	230	280	330	380	460	550	640
O/All Height	250	295	325	353	400	475	550	625

Fitted with bird mesh for use on gas fired applications only.

Anti-Downdraught (AD Cowl)

Code 0855**



<i>Diameter Code</i>	04	05	06	07	08	10	12	14
Internal Diameter	100	130	150	180	200	250	300	350
Top Diameter	180	230	280	320	380	460	550	640
O/All Height	305	380	450	450	610	660	750	840

Top Stub

Code 0820**



<i>Diameter Code</i>	04	05	06	07	08	10	12	14
Internal Diameter	100	130	150	180	200	250	300	350
O/All Height	93							

Rotorvent With Adaptor

Code 3604**



<i>Diameter Code</i>	04	05	06	07	08	10
Internal Diameter	100	130	150	180	200	250
O/All Height	495					

Standard Appliance Connector & Appliance Connector with 0.9mm inner **P+**



HT-S I/D	100	130	150	180	200	250	300	350
Code Standard	082904	082905	082906	082907	082908	082910	082912	082914
Code 0.9mm inner	082904C	082905C	082906C	082907C	082908C	082910C	082912C	082914C
Overall Height	170							
Installed	115							
Tail Length	70							
Use 0.9mm inner when connecting directly onto a stove.								

1" Increasing Appliance Connector & 1" Increasing Appliance Connector with 0.9mm inner **P+**



1" Increasing Code	082904A	082905A	082906A	082907A	082908A	082910A	082912A	082914A
1" Increasing 0.9mm	082904D	082905D	082906D	082907D	082908D			
Overall Height	165							
Installed	115							
Tail Length	75							
Use 0.9mm inner when connecting directly onto a stove.								

Transition Adaptor

Code 0830**



Diameter Code	05	06
Internal Diameter	130	150
Overall Height	495	
Installed	410	
Tail Length	40	
The Transition Adaptor should be treated as a piece of connecting flue pipe whilst designing the installation. Can be used directly off the stove or to make the transition from connecting flue pipe to HT-S. Made to order.		

TW-SW Adaptor

Code 0828**



Diameter Code	04	05	06	07	08	10	12	14
Internal Diameter	100	130	150	180	200	250	300	350
Overall Height	170							
Tail Length	70							
For connecting the top of a twin wall system to a single wall system.								

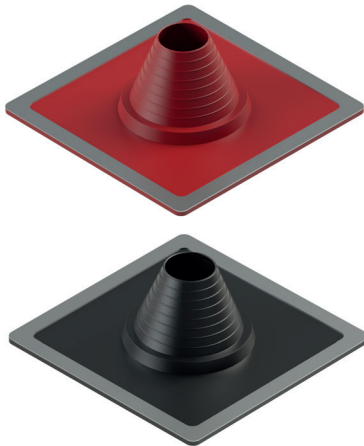
Termination/Anchor Plate

Code 0819**



Diameter Code	04	05	06	07	08	10	12	14
Internal Diameter	100	130	150	180	200	250	300	350
Square Size	302	328	353	379	404	455	506	556
Installed Height	160							
For connecting from a brick chimney or fire chest to HT-S.								

Flexible Flashings



Flexible Rubber Flashings (Size to suit flue Outside Diameter)

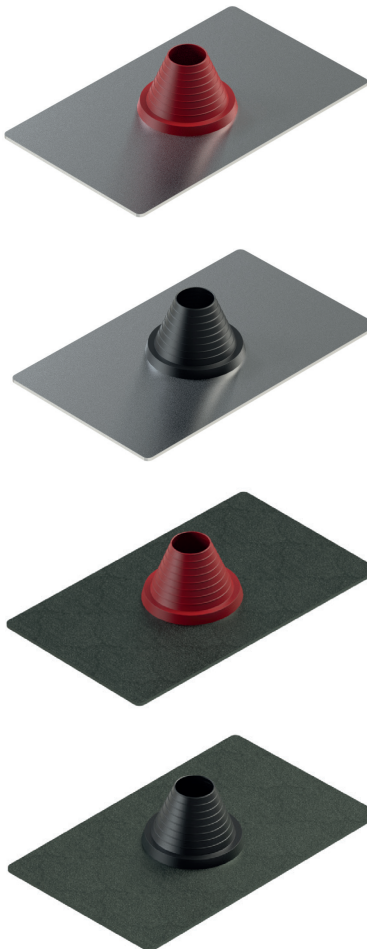
<i>Black Temp Range -40° - +115° Order Codes</i>	<i>Red Temp Range -50° - +240° Order Codes</i>	<i>0-20° roof Pitch Diameter</i>	<i>0-45° roof Pitch Diameter</i>	<i>Base Size</i>	<i>RFC Clips For Retro Fit</i>
0021004	0020004	75-150	75-135	255 x 255	6
0021005	0020005	125-200	125-165	313 x 313	5
0021006	0020006	145-250	145-230	370 x 370	6
0021007	0020007	195-300	195-255	440 x 440	7
0021008	0020008	230-380	230-355	540 x 597	9
0021009	0020009	315-500	315-450	650 x 720	11

Rubber Flashing Fixing Kit Code 002600

Contents : 12 Washer type fasteners, hexagon coloured caps, drill Bit, 80ml silicone sealant, trimming knife, and includes fitting instructions.

Stainless Steel RFC Clips Code 002700

Retro fit clips for flexible rubber flashings, not suitable for aluminium and Acylead base flashings.



Aluminium Base Rubber Flashings (Size to suit flue Outside Diameter)

<i>Black Temp Range -40° - +115° Order Codes</i>	<i>Red Temp Range -50° - +240° Order Codes</i>	<i>0-20° roof Pitch Diameter</i>	<i>0-45° roof Pitch Diameter</i>	<i>Base Size</i>
0023005	0022005	100-225	100-225	500 X 600
0023006	0022006	180-255	180-200	600 X 800
0023007	0022007	175-380	175-350	750 X 900

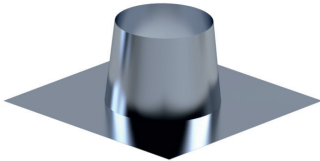
Acylead Base Rubber Flashings (Size to suit flue outside diameter)

<i>Black Temp Range -40° - +115° Order Codes</i>	<i>Red Temp Range -50° - +240° Order Codes</i>	<i>0-20° roof Pitch Diameter</i>	<i>0-45° roof Pitch Diameter</i>	<i>Base Size</i>
0025004	0024004	100-150	100-115	450 x 600
0025006	0024006	150-280	150-255	600 x 850

Acrylic primer coating on lead sheet to assist safe handling.

Flat Roof Plate AL

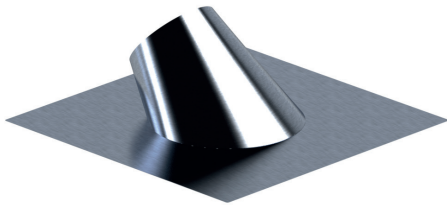
Code 0005**



HT-S I/D	100	130	150	180	200	250	300	350
Order Code	06	07	08	09	10	12	14	16
To suit HT-S O/D	152	178	203	229	254	305	356	406
Base Size (mm Square)	500				600	650	700	750
Upstand Diameter	167	193	218	244	269	320	370	421

Adjustable Roof Plate AL (0-30 or 25-45)

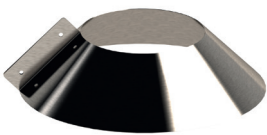
Code 0005**



HT-S I/D	100	130	150	180	200	250	300	350
Order Code (0-30)	06A	07A	08A	09A	10A	12A	14A	16A
Order Code (25-45)	06B	07B	08B	09B	10B	12B	14B	16B
To suit HT-S O/D	152	178	203	229	254	305	356	406
Base Size (mm Square)	550	600		700	800		850	
Upstand Diameter	177	203	228	254	280	330	380	431

Storm Collar AL (Cravat Type)

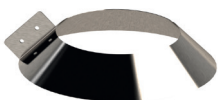
Code 0006**



HT-S I/D	100	130	150	180	200	250	300	350
Order Code	06	07	08	09	10	12	14	16
To suit HT-S O/D	152	178	203	229	254	305	356	406
Collar Diameter	352	378	403	429	454	505	556	606
Height	100							

Storm Collar AL (Washer Type)

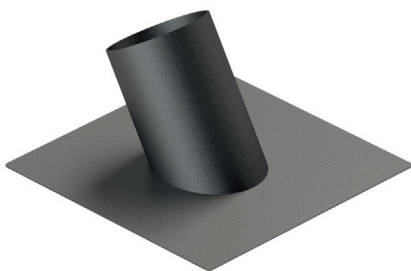
Code 0007**



HT-S I/D	100	130	150	180	200	250	300	350
Order Code	06	07	08	09	10	12	14	16
To suit HT-S O/D	152	178	203	229	254	305	356	406
Collar Diameter	272	298	323	349	374	425	476	526
Height	60							

Lead Flashings

Code 0001**



HT-S I/D	100	130	150	180	200	250	300	350
Base Size (mm)	610mm square				760mm Square			
Upstand (mm)	304 mm Short side							
Order Code Flat	06	07	08	09	10	12	14	16
Order Code 15°	06A	07A	08A	09A	10A	1A	14A	16A
Order Code 30°	06B	07B	08B	09B	10B	12B	14B	16B
Order Code 45°	06C	07C	08C	09C	10C	12C	14C	16C

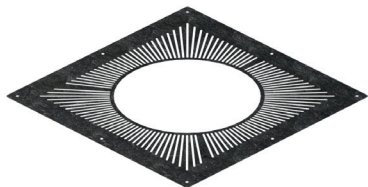
Manufactured from 4lb lead. Installations should be finished off with a storm collar and sealed.

Peak and special flashings are available to order.

Full installation and selection instructions are available on our website and by request.

Non Supporting Ventilated Top Plate

Code 0043**

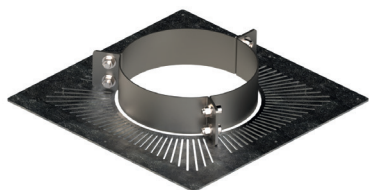


HT-S I/D	100	130	150	180	200	250	300	350
Order Code	004306	004307	004308	004309	004310	004312	004314	004316
Square Size	322	346	373	399	424	475	526	626

The non supporting ventilated top plate is for use where the flue system penetrates floors but no load bearing support is required.

Ventilated Support Plate with collar

Code 0040**

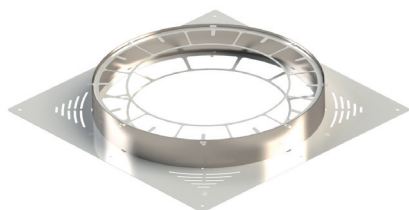


HT-S I/D	100	130	150	180	200	250	300	350
Order Code	004006	004007	004008	004009	004010	004012	004014	004016
Square Size	322	346	373	399	424	475	526	626

A load bearing support must be positioned every six metres.

Ventilated Firestop/Fire Sealing Collar

Code 0042**

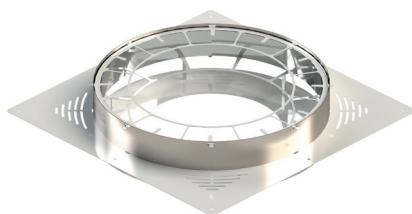


HT-S I/D	100	130	150	180	200	250	300	350
Order Code	004206	004207	004208	004209	004210	004212	004214	004216
Square Size	322	346	373	399	424	475	526	626

The collar attached to the plate houses and supports strips of material that expand when the activation temperature is exceeded, reducing gaps to restrict flame ingress.

Covered Ventilated Firestop cw Fire Collar

Code 0042**A

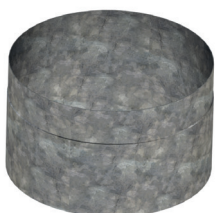


HT-S I/D	100	130	150	180	200	250	300	350
Order Code	004206A	004207A	004208A	004209A	004210A	004212A	004214A	004216A
Square Size	322	346	373	399	424	475	526	626

Only suitable for use when penetrating the ceiling in the same room as the appliance.

Radiation Shield

Code 0041**



HT-S I/D	100	130	150	180	200	250	300	350
Order Code	004106	004107	004108	004109	004110	004112	004114	004116
Diameter	225	247	274	296	325	376	427	477
Height	110-210	110-210	110-210	110-210	110-210	110-210	110-210	110-210

The adjustable radiation shield can be extended to suit the joist height.

Wall Band S/S

0061**



HT-S ID	100	130	150	180	200	250	300	350
Order Code	06	07	08	09	10	12	14	16

Used to provide lateral support for a vertical flue. Standard gives 50mm clearance from a wall.

Wall Band Extension Kits S/S

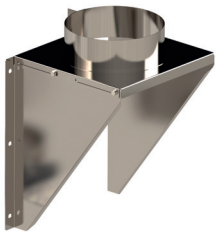


Length	50-100	75-200	150-300
Order Code	0061A	0061B	0061C

Pair of extension arms to be used with any diameter wall band, which allow for clearance from the wall in the ranges as above.

Intermediate Wall Support S/S

0052**



HT-S ID	100	130	150	180	200	250	300	350
Order Code	06	07	008	009	10	12	14	16
Plate Sq	254	279	304	330	355	407	458	508
Side Height	340	365	390	416	440	500	570	620

For use as a load bearing intermediate support from a wall. Supplied complete with a support plate and collar. Also available in galvanised mild steel. Set as standard 50mm from wall, with an additional 75mm adjustment for 100mm Diameter and 100mm adjustment on all other diameters on the plate. For more adjustment, please contact our sales team for pricing, 300mm maximum.

Telescopic Base Support S/S

0051**

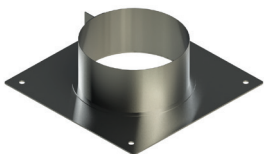


HT-S ID	100	130	150	180	200	250	300	350
Order Code	06	07	08	09	10	12	14	16
Plate Sq	250	280	300	330	350	410	460	510
Flange Sq	300	330	350	380	400	460	510	560

Used to support a vertical flue run. Adjustable from 385mm to 585mm installed.

Support Plate S/S

0053**



HT-S ID	100	130	150	180	200	250	300	350
Order Code	06	07	08	09	10	12	14	16
Square Size	302	328	353	378	403	457	505	559

For where the flue penetrates a non-combustible floor. Also acts as a firestop plate. Supplied complete with support collar. Available in galvanised mild steel.



Split Clip Band S/S

0050**

HT-S ID	100	130	150	180	200	250	300	350
Order Code	06	07	08	09	10	12	14	16

Provides horizontal support or lateral stability.



Guy Wire Bracket S/S

0054**

HT-S ID	100	130	150	180	200	250	300	350
Order Code	06	07	08	09	10	12	14	16

Provides 3 fixing points for use with guy wires to enable lateral support of a vertical flue.



Guy Wire Kit

Order Code	005400a
------------	---------

Contents : 30m of 3mm wire, 12 bulldog clips, 3 strainers and 6 thimbles for use with guy wire bracket.

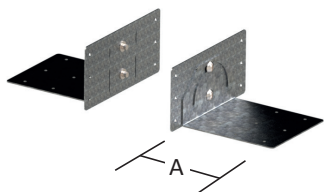


Heavy Duty Rafter Support Bracket

0056**

HT-S ID	100	130	150	180	200	250	300	350
Order Code	06	07	08	09	10	12	14	16
Wing Span	407	433	458	484	509	560	611	661

Heavy duty rafter support brackets are to be used where extra stability is required and maintains 50mm clearance from combustibles.

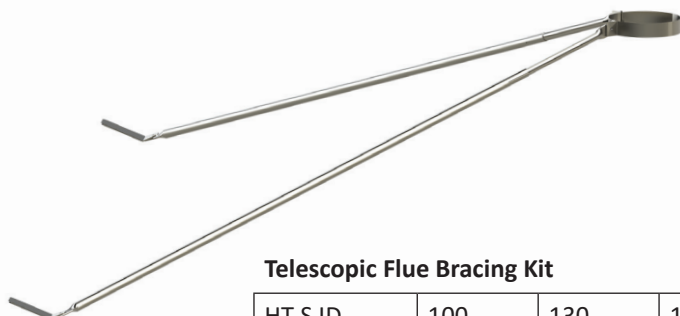


Universal Rafter Support Bracket

Order Code	005600A
------------	---------

Universal rafter support bracket maintains 50mm clearance from combustible materials and provides lateral support.

A = 135mm to 4mm hole centre.



Telescopic Flue Bracing Kit

0055**

HT-S ID	100	130	150	180	200	250	300	350
Order Code	06	07	08	09	10	12	14	16

Kit includes 2 telescopic extension poles made from galvanised mild steel, 2 roof brackets and a support ring. Poles adjust from 1900mm - 3400mm. Used to provide additional support and rigidity above the roof line.



Additional Locking Bands

Code 0833**

O/All Height	50
Used to complete and secure joints. Please note all HT-S components, that have a male end, come with a locking band included.	



Structural Locking Bands

Code 0833**A

O/All Height	148
Structural locking bands to be used when extra stability is required.	



Draught Stabilisers

Code 2701**

Draught stabilisers are manufactured using 304 grade stainless steel and are designed to be fitted to an adapted appliance connector. These can be factory fitted upon request.



Trim Plates

To Suit HT-S ID	100	130	150	180	200	250	300	350
Order Code Square	003106	003107	003108	003109	003110	003112	003114	003116
Order Code Round	003106A	003107A	003108A	003109A	003110A	003112A	003114A	003116A
mm Square	312	338	363	389	414	465	516	566

Trim plates are used to tidy holes cut in wall and suitable for T450 installations. Please specify angle and shape at ordering point. As standard trim plates have a 75mm coverage, specials can be made to order.



Silicone Sealant

Code 008100

Available in 310ml Tubes. Suitable for temperatures upto 180 degrees C.



Firestop Spacer

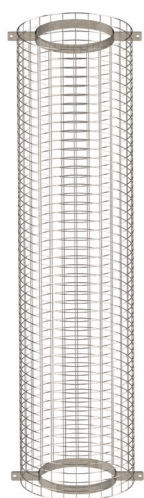
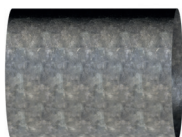
To Suit HT-S ID	100	130	150	180	200	250	300	350
Order Code	003006	003007	003008	003009	003010	003012	003014	003016
mm Square	302	328	353	378	404	455	506	556



Galvanised Wall Sleeves

To Suit HT-S ID	100	130	150	180	200	250	300	350
Sleeve Diameter	203	229	254	280	305	356	406	457
500 Length	003208	003209	003210	003211	003212	003214	003216	003218
1000 Length	003208B	003209B	003210B	003211B	003212B	003214B	003216B	003218B
280-380 Adjustable	003208D	003209D	003210D	003211D	003212D	003214D	003216D	003218D

The order codes above are for straight sleeves, they are also available at a 45 degree angle as shown.



Meshed Enclosure

Code 0853**

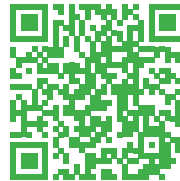
<i>Diameter Code</i>	04	05	06	07	08	10	12	14
To Suit HT-S ID	100	130	150	180	200	250	300	350
Mesh Diameter	254	278	303	329	354	406	457	508
O/All Height	1220 (other lengths available on request)							

Designed to be used in a loft space to prevent accidental contact with the flue. The galvanised mesh enclosure comes complete with 2 spacing clamps that provide 50mm clearance from the flue outer.

Twin Wall Midflex Flexible Flue Liner

Midtherm Midflex is a class 1 flexible flue liner, that is produced in both 316L and 904L grade Stainless Steel. It is used in existing brick chimneys to line the inside of them. Midflex has been tested for a maximum operating temperature of 600 Degrees C.

Manufactured and stocked at our factory in the United Kingdom using the latest techniques and technologies, ensures a high quality product.



Midflex



Single Wall Vitrelux High Temperature Connecting Flue System

Vitrelux flue pipe is a single wall connecting flue pipe with a high temperature, acid resistant enamel coating. Available in both a matt and gloss black finish. Lengths and elbows are available with doors which allow for cleaning access and can be removed and refitted without chipping. Also available with a more economical 0.6mm version "EcoVit".

Manufactured and stocked at our factory in the United Kingdom using the latest techniques and technologies, ensures a high quality product.



Vitrelux



Other connecting systems may be suitable depending on installation requirements.



Midtherm Flue Systems Limited
New Road, Dudley, West Midlands, DY2 8SY
Tel: 01384 458800 Fax: 01384 458811
www.midtherm.co.uk @MidthermFlue
sales@midtherm.co.uk /MidthermFlue
UK Reg. 00936960

Midtherm Flue Systems is a family owned UK Business with over 50 years in the flue industry.

We are committed to providing excellence in both the products and the service we offer.

With one of the largest flue manufacturing, storage and distribution facilities in the UK, we are able to supply direct from stock and rapidly produce for domestic, commercial and industrial customers worldwide.



Midtherm Laser Limited
Sub-Contract Laser Cutting
Tel: 01384 458841
www.midthermlaser.co.uk
sales@midthermlaser.co.uk



Midtherm Powder Coating Limited
Sub-Contract Powder Coating
Tel: 01384 258877
www.midthermcoating.co.uk
sales@midthermcoating.co.uk



Midtherm Stainless Limited
*Stainless Steel Canopies, Sinks, Tables and
Bespoke Commercial Kitchen Fabrications*
Tel: 01384 238786
www.midthermstainless.co.uk
sales@midthermstainless.co.uk