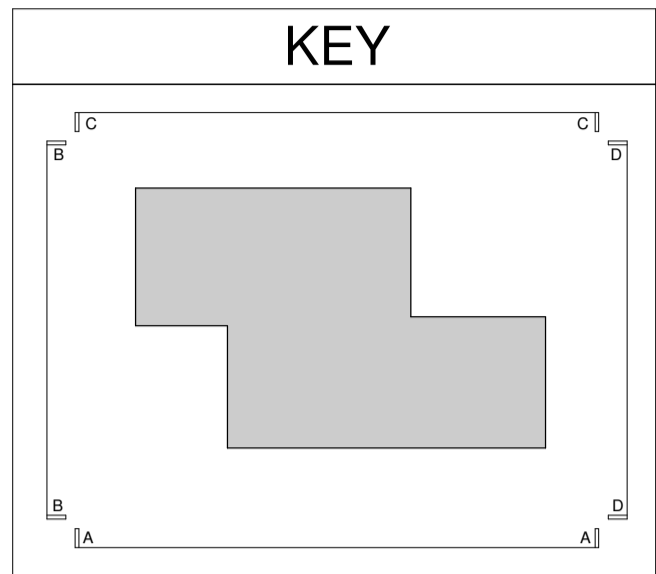
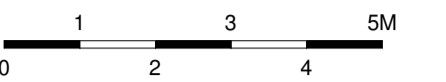


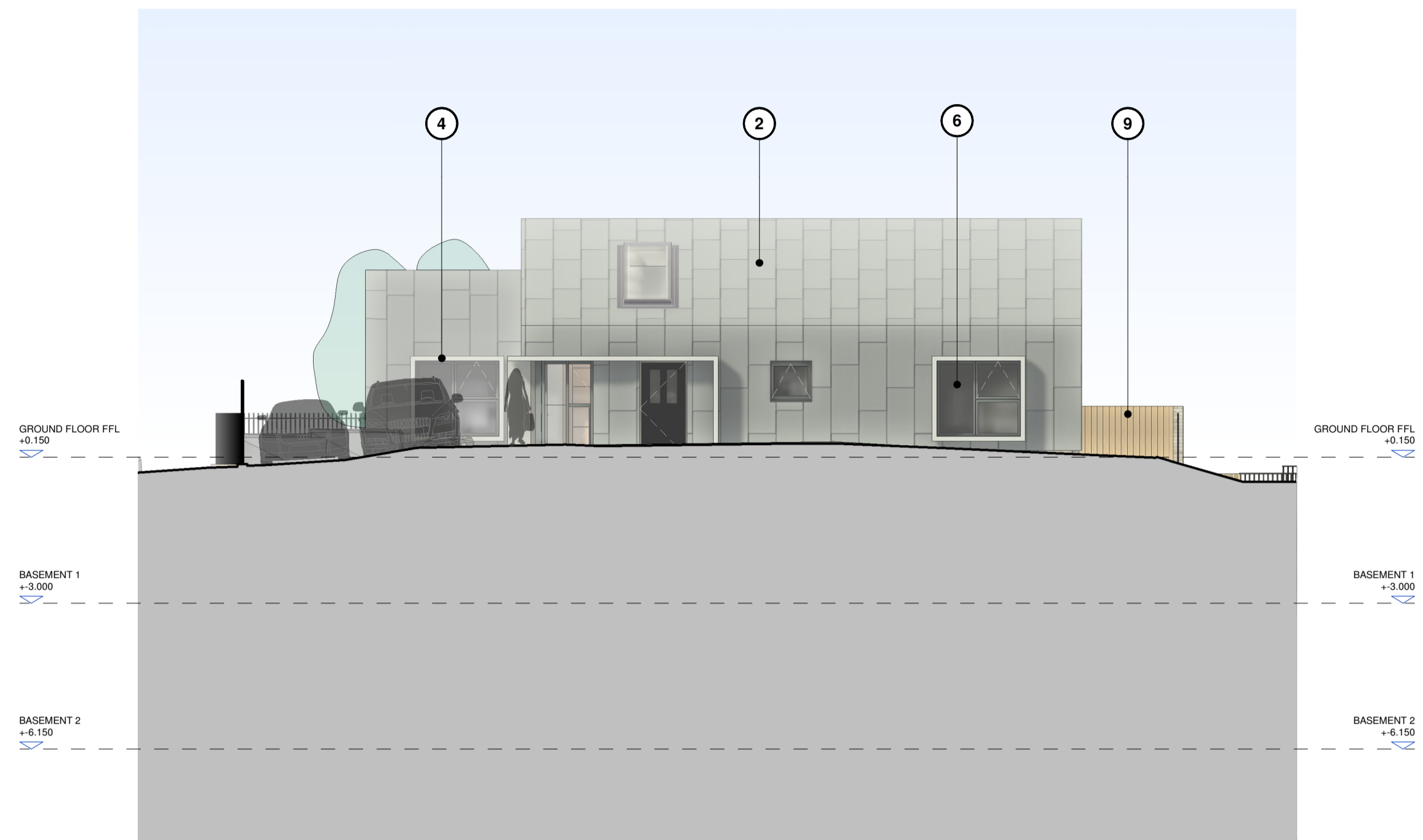
GENERAL NOTES
 1. ALL DIMENSIONS TO BE VERIFIED IN SITE AND ANY DISCREPANCIES REPORTED BACK TO RDT ARCHITECTS.
 2. COPYRIGHT OF THIS DRAWING IS RESERVED BY RDT ARCHITECTS
 3. THIS DRAWING IS FOR PLANNING PURPOSES ONLY



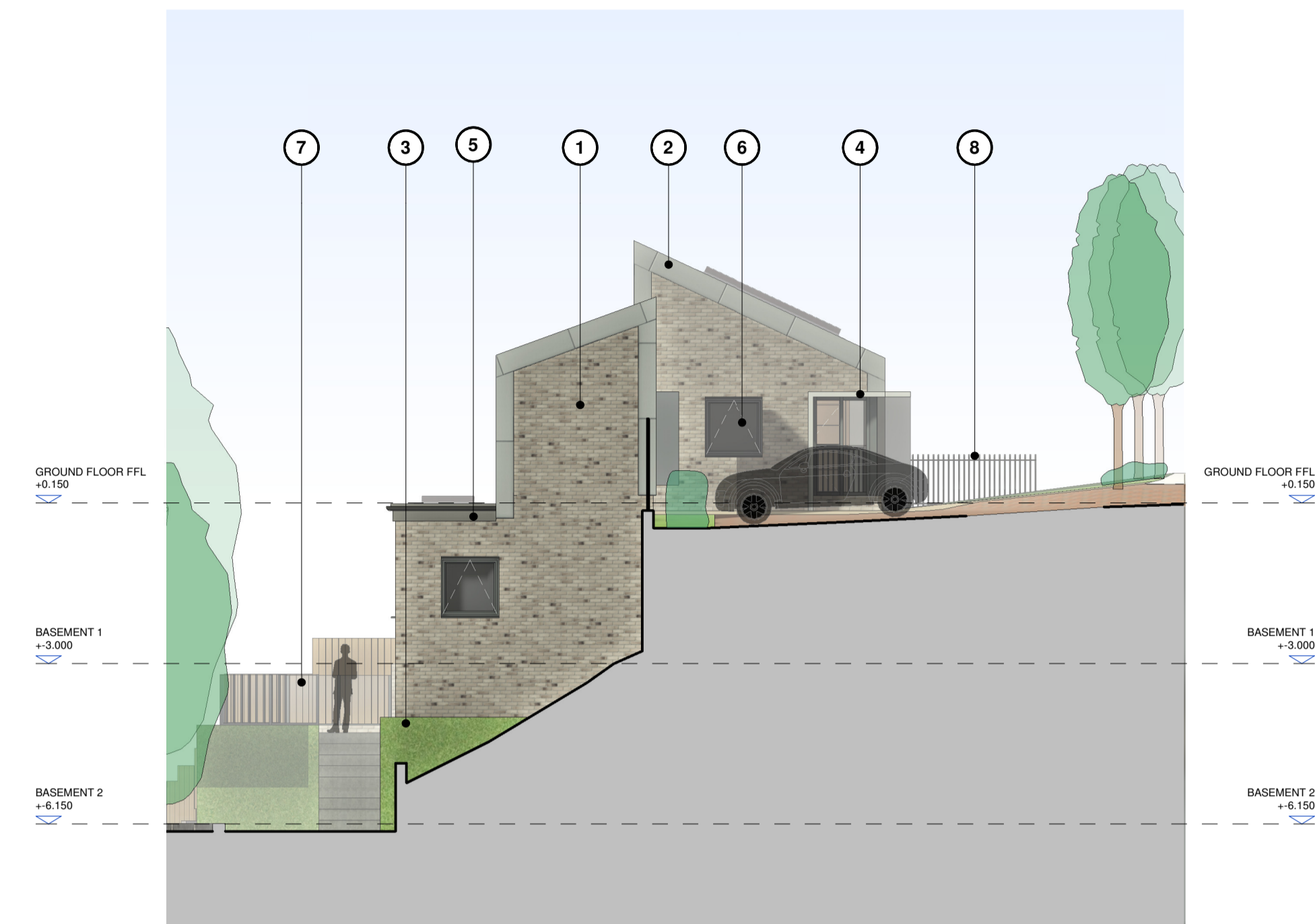
MATERIALS KEY

- 1 BRICK, LONDON STOCK BRICK
- 2 ZINC CLADDING VERTICAL STANDING SEAM
- 3 GREEN WALL
- 4 CANOPY/WINDOW SURROUND ZINC CLAD
- 5 METAL COPING/FLASHING FOLDED PPC METAL COPING IN DARK GREY
- 6 WINDOWS AND DOORS ALUMINIUM FRAMED
- 7 RAILINGS - TYPE 1 GLASS BALUSTRADE
- 8 RAILINGS - TYPE 2 METAL RAILINGS
- 9 TIMBER TIMBER PANEL DOOR

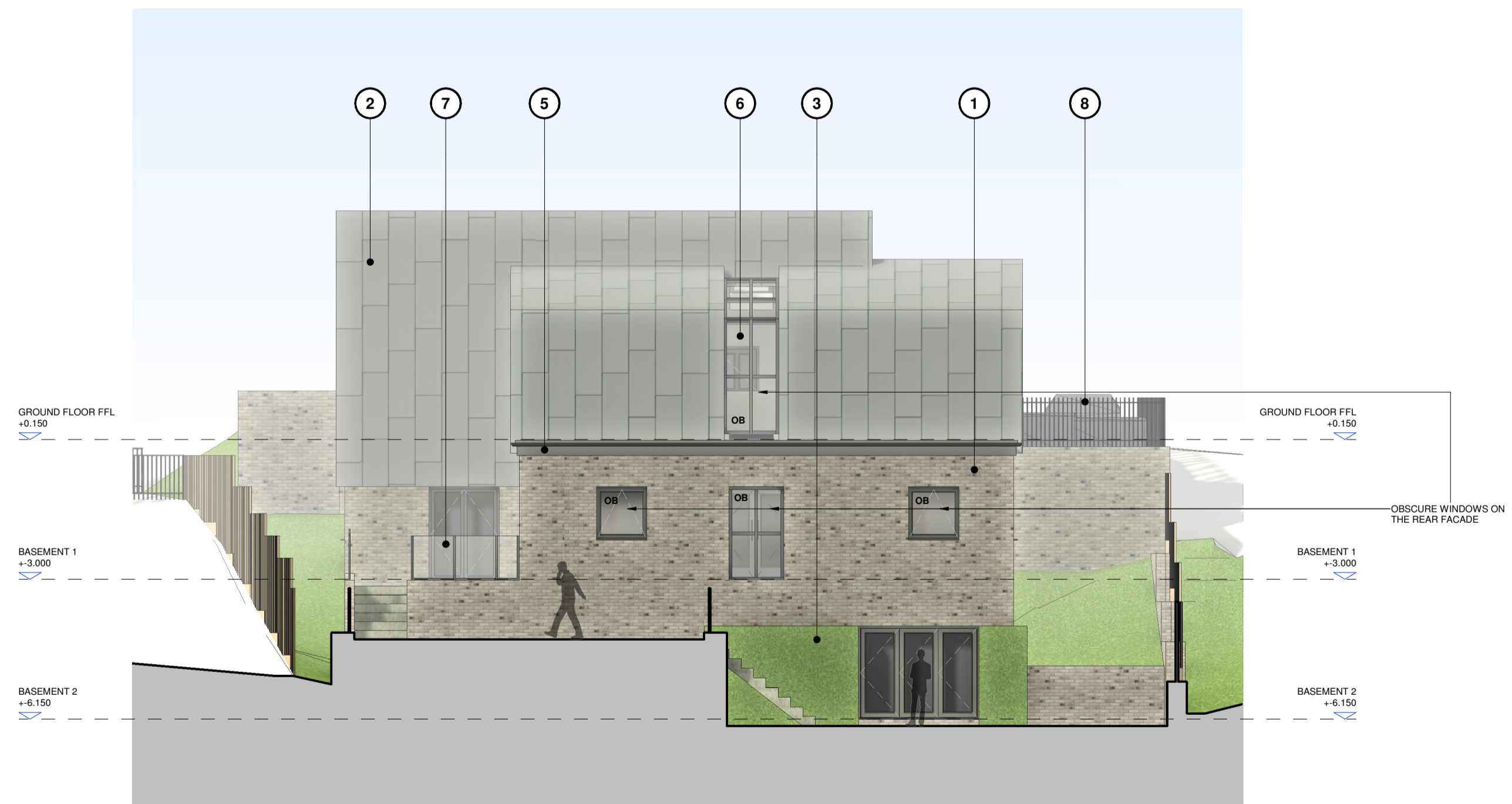
OB OBSCURE WINDOWS



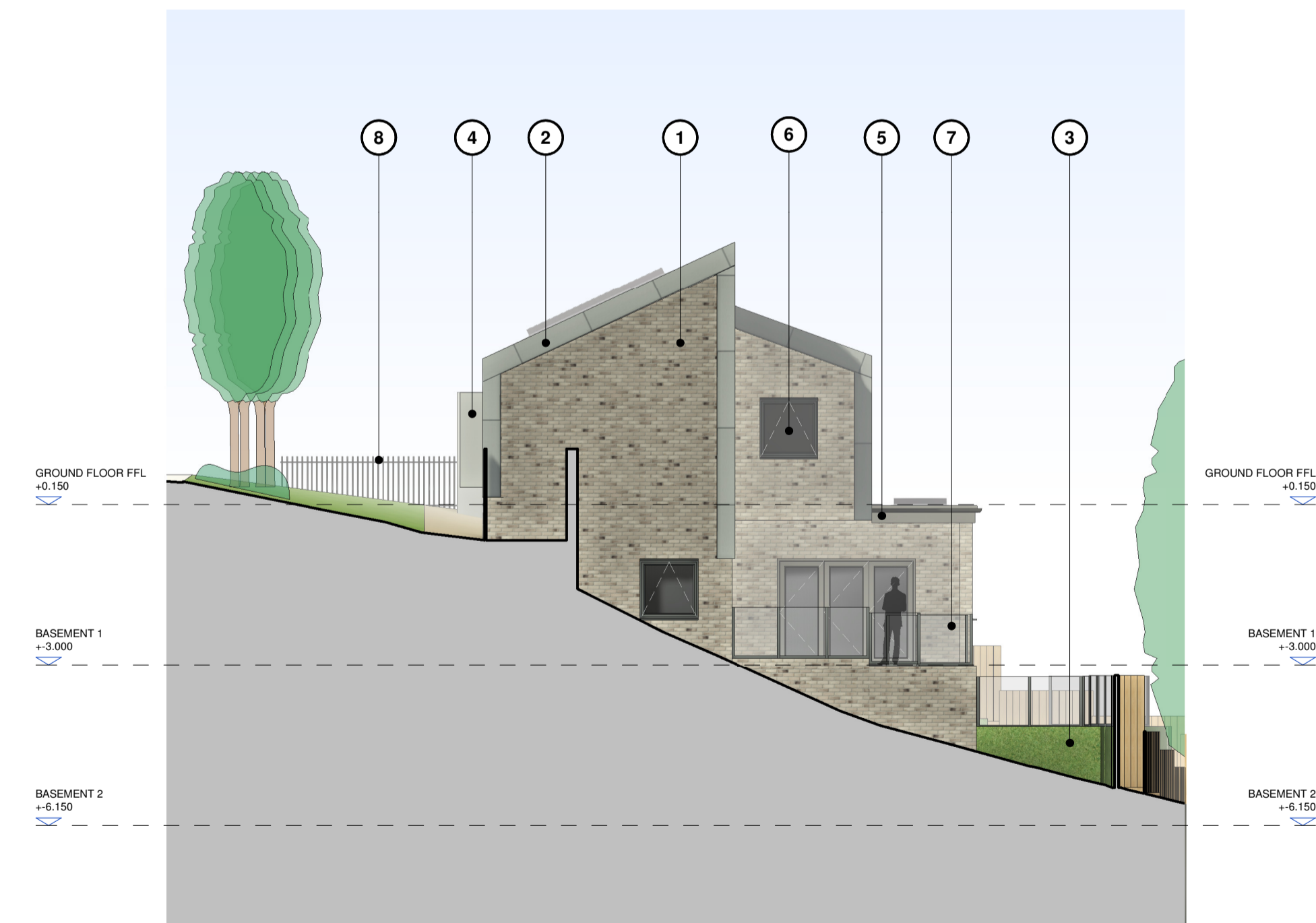
ELEVATION AA - FRONT ELEVATION



ELEVATION BB - LEFT ELEVATION



ELEVATION CC - REAR ELEVATION



ELEVATION DD - RIGHT ELEVATION

PL1	PLANNING ISSUE	GH	04.08.21
REV	DESCRIPTION	BY	DATE

PROJECT WORK STAGE
PLANNING

CLIENT
TROUT RISE DEVELOPMENTS LTD

PROJECT
LAND AT LAWFORD CLOSE, CHORLEYWOOD, WD3 5PG

DRWG TITLE
PROPOSED GENERAL ARRANGEMENT ELEVATIONS

PROJECT	ORIGINATOR	ZONE	LEVEL	TYPE	DIS	NUMBER
1159TPL	RDT	ZZ	ZZ	DR	A	3000

STATUS | SUITABILITY DESCRIPTION

DRAWN BY	DATE	SCALE	CHECKED BY
GH	AUG 21	1 : 100	CC
RDT PROJECT REF.	PAPER SIZE	REVISION	
1159	A1	PL1	



PROPOSED GENERAL ARRANGEMENT ELEVATIONS

1 Harrier Court, Woodside Road
 Lower Woodside, Bedfordshire LU11 4DQ
 T: +44(0)1582 461060
 E: rdt@rdtarchitects.co.uk
 www.rdtarchitects.co.uk