

The Proposed Aberdeen Local Development Plan City Wide Proposals Map

Scale 1:22,500

Natural Environment

- Greenbelt (NE2)
- Green Space Network (NE1)
- Urban Green Space (NE3)

Housing

- Residential Areas (H1)
- Mixed Use Areas (H2)
- Land Release Policy (LR1)

Community Facilities

- Existing Community Sites and Facilities (CF1)
- New Community Sites and Facilities (CF2)

Economic Development

- Business and Industrial Land (BI1)
- Specialist Employment Areas (BI2)
- West End Office Area (BI3)
- Aberdeen Airport and Harbour (BI4)

Transport

- Land for Transport (T1)
- Aberdeen Western Peripheral Route
- Aberdeen Harbour Port Boundary
- Aberdeen Airport Public Safety Zone

Retailing

- Town, District and Neighbourhood Centres (RT3)
- Retail Parks (RP)

City Centre

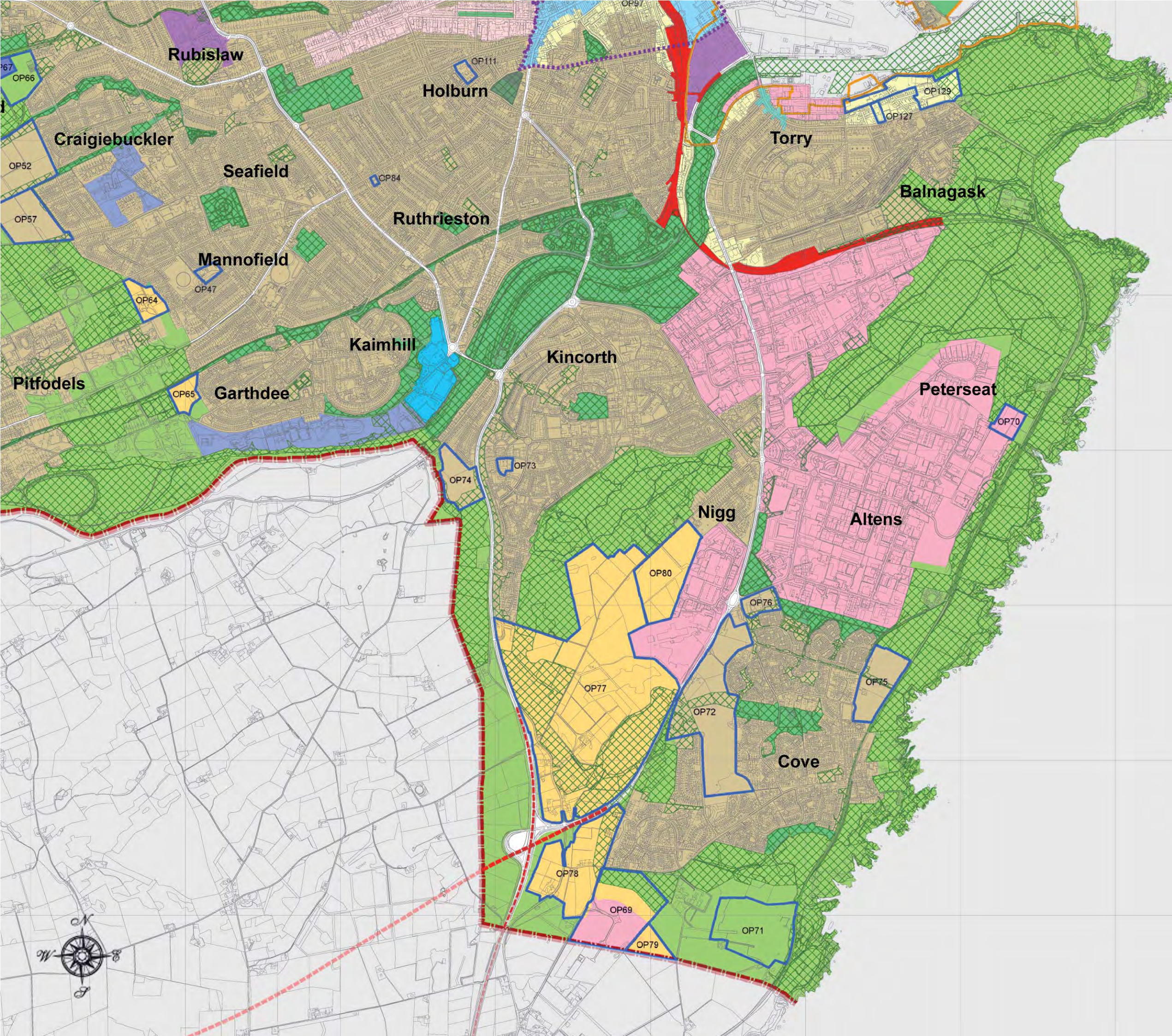
- City Centre Business Zone (C2)

Others

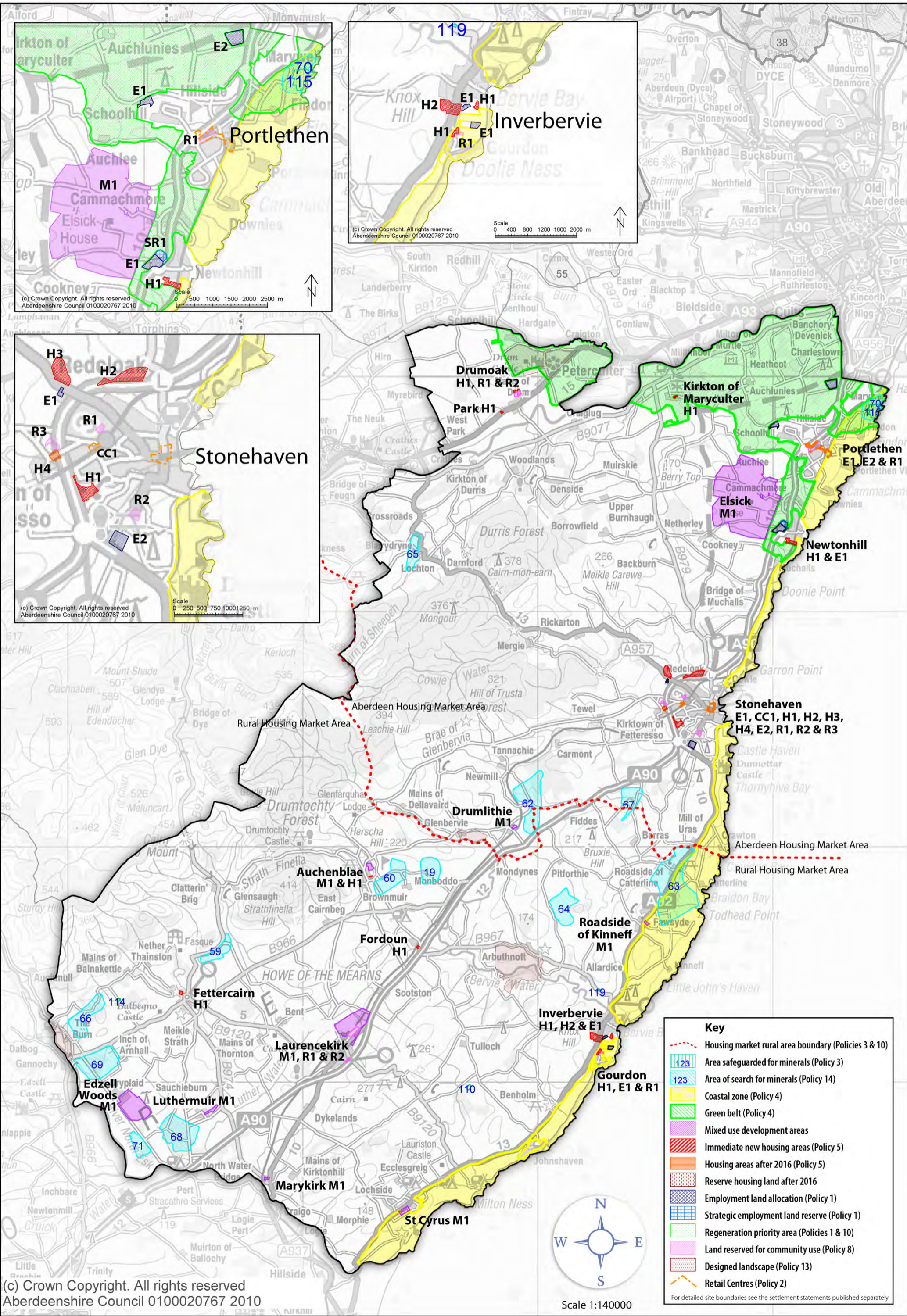
- Opportunity Sites (OP number)
- City Centre Boundary
- City Boundary

This map is reproduced from Ordnance Survey material with the permission of Ordnance Survey on behalf of the Controller of Her Majesty's Stationery Office (c) Crown copyright. Unauthorised reproduction infringes Crown copyright and may lead to prosecution or civil proceedings.
Aberdeen City Council 100023401 (2010).

www.aberdeencity.gov.uk



Aberdeenshire Local Development Plan 2010 Proposals Map ~ Kincardine and Mearns



	A	B	C	D	E	F	G	H	I	J	K	L
1	Pending / Recently Granted Planning Applications - Aberdeenshire Council											
2												
							No. Residential of Units	No. Commercial Units	Gross Floor space (m²)		Decision Date	Case Officer
3		App Ref	Status	Address	Description of Development	Size				Ctte Date		
4												
5	Electoral Ward: North Kincardine											
6	1	APP/2010/3851	Pending	Land adjacent to AMC Engineering Ltd, Blackhill of Findon, Portlethen, Aberdeen, AB12 4RL	Erection of office building and formation of car park	0.15 ha	1		520	26/04/2011		Jamie Scott
7	2	APP/2010/3244	Pending	Land adjacent to Lairhilllock School, Netherley, Stonehaven	Mixed Use Development Including 70 Dwellinghouses, 5 Commercial Units, Childrens Nursery and Associated Roads, Landscaping, Drainage, Pond and Paths	4.7 ha	70	5				Jamie Scott
8	3	APP/2010/2377	Pending	Ceolmara, 12 Findon Road, Findon, Portlethen, AB12 3RN	Demolition of Existing Dwellinghouse and Erection of No. 7 Dwellinghouses and Formation of Access Road with provision of 14 parking spaces	0.5 ha	7					Robert McIntosh
9	4	APP/2010/2154	Granted sbj to C's	EIS Waste Services Ltd, Galloehill, Wellington Road Checkbar, Portlethen, AB12 4LP	Erection of a 60m x25m Waste Transfer Building, Extensions 37.7m x 16m to Sorting and Office Buildings, Formation of Parking Area and Yard and Upgrade of Access Road	3.0174 ha				18/01/2011	20/01/2011	Jamie Scott
10	5	APP/2010/1525	Pending	Blackhills of Cairnrobin, Portlethen, Aberdeen, AB12 4SD	Conversion of Steading to form 3 No. Residential Units and 1 No. Business Unit . Provision of 9 parking spaces	0.2345 ha	3	1	521.3	18/01/2011		Neil Mair
11	6	APP/2010/1158	Granted sbj to C's	Qserv Ltd, Badentoy Way, Badentoy Industrial Estate, Portlethen	Formation of Open Storage Yard / Employment Land	3.8 ha				26/10/2010	03/02/2011	Jamie Scott
12	7	APP/2010/0886	Granted sbj to C's	Mill of Monquich Works, Netherley, Stonehaven, AB39 5GN	Gas Turbine Testing Facility	0.53 ha			235	31/08/2010	17/09/2010	Robert McIntosh
13	8	APP/2010/0805	Pending	Maryculter West School, Maryculter, Aberdeen, AB12 5GN	Change of Use from Class 10 (School) to Class 4 (Offices)	0.1359 ha			402.4			Gregor Spence
14	9	APP/2010/0725	Granted sbj to C's	Blackbuts, Muchalls, Stonehaven, AB39 3RS	Conversion of Steading to form 2 Residential Units and 1 Business Unit (Holiday Let). Provision of 8 parking spaces.	0.397 ha	3				11/06/2010	Jonathan Young
15	10	APP/2010/0672	Granted sbj to C's	Land to West of Unit B, Badentoy Avenue, Badentoy Industrial Estate, Portlethen	Conversion of Steading to Form Business Centre and Formation of Vehicular Access	0.63 ha		4	507			Gregor Spence
16	11	APP/2010/0095	Granted sbj to C's	Bluewater House, Badentoy Crescent, Badentoy Industrial Estate, Portlethen	Change of Use from Warehouse and Associated Offices to Training Centre (Sui Generis), Installation of No. 3 Steel Containers and Alterations to Building to Form New Entrance Door and Window	0.3615 ha					15/03/2010	Jamie Scott
17	12	APP/2009/3910	Granted sbj to C's	Maryculter House Hotel, Maryculter, Aberdeen, AB12 5GB	Erection of Staff Accommodation Block (12 Rooms)	1.785 ha					24/02/2010	Jamie Scott
18	13	APP/2009/4030	Granted sbj to C's	Land to the East of Hilltop Lodge, Badentoy Industrial Estate, Portlethen	Change of Use to Form Car Park and Formation of New Access, provision of 18 spaces plus 2 disabled spaces.	0.087 ha					16/02/2010	Robert McIntosh
19	14	APP/2009/3560	Granted	Twentieth Century Classics Ltd, Newtonhill, Stonehaven, AB39 3NN	Erection of 2 No Commercial Units with Associated Access & Parking	0.2467 ha		2	600		17/03/2010	Gregor Spence
20	15	APP/2009/3548	Granted sbj to C's	Hunting Oilfield, Services International, Badentoy Avenue, Badentoy Industrial Estate, Portlethen	Extension to Office Premises to include a 1260 m2 office extension and an additional 2835 m2 workshop extension	1.95 ha		2			14/07/2010	Gregor Spence
21	16	APP/2009/3216	Granted sbj to C's	Jockston House, Ardoe, Aberdeen, AB12 5XT	Erection of Agricultural Building and Formation of Vehicular Access	0.2 ha			450		09/12/2009	Robert McIntosh
22	17	APP/2009/2863	Granted sbj to C's	McIntosh Donald Ltd, Cookstone Road, Portlethen, Aberdeen, AB12 4QB	Installation of 2 Containerised Plant Rooms and 2 Roof Mounted Condensers and Removal of 2 Roof Mounted Condensers	2.3 ha			30		06/11/2009	Jonathan Young
23	18	APP/2009/2530	Pending	Land to the East of West Monduff, Newtonhill, Stonehaven	Residential Development (60 Houses)	3.55 ha				07/12/2010		Jamie Scott
24	19	APP/2009/2526	Pending	Land adjoining West Monduff, Newtonhill, Stonehaven, AB39 3PR	Erection of Workshop/Warehouse with Associated Offices and Car Parking (42 x spaces)	6.64 ha			2799			Gregor Spence
25	20	APP/2009/2687	Granted sbj to C's	Clock House, Kirkton of Maryculter, Aberdeen, AB12 5FS	Change of Use of Agricultural Land to Residential and Erection of New Garage	0.075 ha				08/12/2009	15/12/2009	Jonathan Young
26	21	APP/2009/2598	Granted sbj to C's	B J Services Co (UK) Ltd, Badentoy Avenue, Badentoy Industrial Estate, Portlethen	Formation of Storage Yard	5.8 ha					09/12/2009	Jamie Scott
27	22	APP/2009/2470	Granted sbj to C's	Aberdeen Gateway, Moss-side, Nigg, Aberdeen, AB12 3LN	Erection of Manufacturing Building with Office Accommodation, Associated Car Parking (137 spaces + 5 disabled spaces) and Landscaping	1.77 ha		2	10,877		09/12/2009	Jamie Scott
28	23	APP/2009/2527	Pending	Old Mill Inn, Maryculter, Aberdeen, AB12 5FX	Alterations and Extension to Hotel	2.1 ha						Jamie Scott
29	24	APP/2009/2484	Granted	Area M2, Schoolhill, Portlethen, Aberdeen, AB12 4RD	Residential Development (40 Dwellinghouses)		40				03/12/2009	Douglas Gray
30	25	APP/2009/2308	Granted sbj to C's	Land at Newtonhill, Stonehaven	Retail Development - Tesco	0.88 ha		1	1,246		21/09/2009	Gregor Spence
31	26	APP/2009/2420	Granted sbj to C's	Land North of Hilltop Lodge, Portlethen, Aberdeen	Change of Use from Agricultural to Class 6 (Storage and Distribution)	1.145 ha					01/12/2009	Robert McIntosh
32	27	APP/2009/2401	Pending	Land North of Marywell Park Homes, Marywell, Portlethen	Residential Development (125 Dwellinghouses)	6.22 ha	125			08/02/2011		Jonathan Young
33	28	APP/2009/1685	Planning permission not required	Brucewells, Netherley, Stonehaven, AB39 3RB	Erection of cattle accommodation	69.7 ha (area of agricultural unit)					22/06/2009	Jamie Scott
34	29	APP/2009/0996	Granted sbj to C's	Pipeyard, Site 45 Badentoy Avenue, Badentoy Industrial Estate, Portlethen, Aberdeen, AB12 4YB	Extension to exiting warehouse facility	1.055 ha			4295		12/06/2009	Gregor Spence
35	30	APP/2009/1039	Pending	Findon Shore, Findon, Portlethen, AB12 3RL	Erection of Office Headquarters, 11 parking spaces proposed plus 1 disabled space.	0.15 ha	1		566			Gregor Spence
36												
37	Electoral Ward: Stonehaven and Lower Deeside											
38	31	APP/2010/3646	Pending	Land to South of Mansefield Cottage, Kirktown, Fetteresso, Stonehaven	Mixed Development Including Residential, Employment and Retail Land Uses with Landscaping, Formation of Bridge, Roads, Cycleways and Paths and All Other Associated Engineering Works	84 ha	1,500					Neil Mair
39	32	APP/2010/2257	Granted sbj to C's	Land to the North of 47 Arduthie Gardens, Stonehaven, AB39 2FB	Erection of 60 Bed Care Home and 8 No Dwellinghouses with Associated Car Parking and Landscaped Gardens	1.55 ha	9		4,570	16/11/2010	25/11/2010	Neil Mair
40	33	APP/2009/3567	Granted	Hillhead of Auquhirie, Stonehaven, AB39 3XB	Erection of Three Wind Turbines, Formation of Access Tracks, Installation of Underground Cables, Temporary Construction Compound and Control Building	35.03 ha				31/08/2010	10/01/2011	Robert McIntosh
41												
42	Applications with DPEA											
43												
44		APP/2006/3263	Refused by LPA - Appeal to Scottish Gov, with reporter	Land at East Newtonleys Farms, Stonehaven, AB39 2XN	Erection of Supermarket, Petrol Filling Station and Associated Site Works	0.42 ha						
45		APP/2009/0493	Refused by LPA - Appeal to Scottish Gov, with reporter	Land South of Braehead Crescent & East Newtonleys, Stonehaven	Construction of Distributor Road	5.5 ha					15/06/2010	
46												
47												
48												
49	Applications of most relevance											