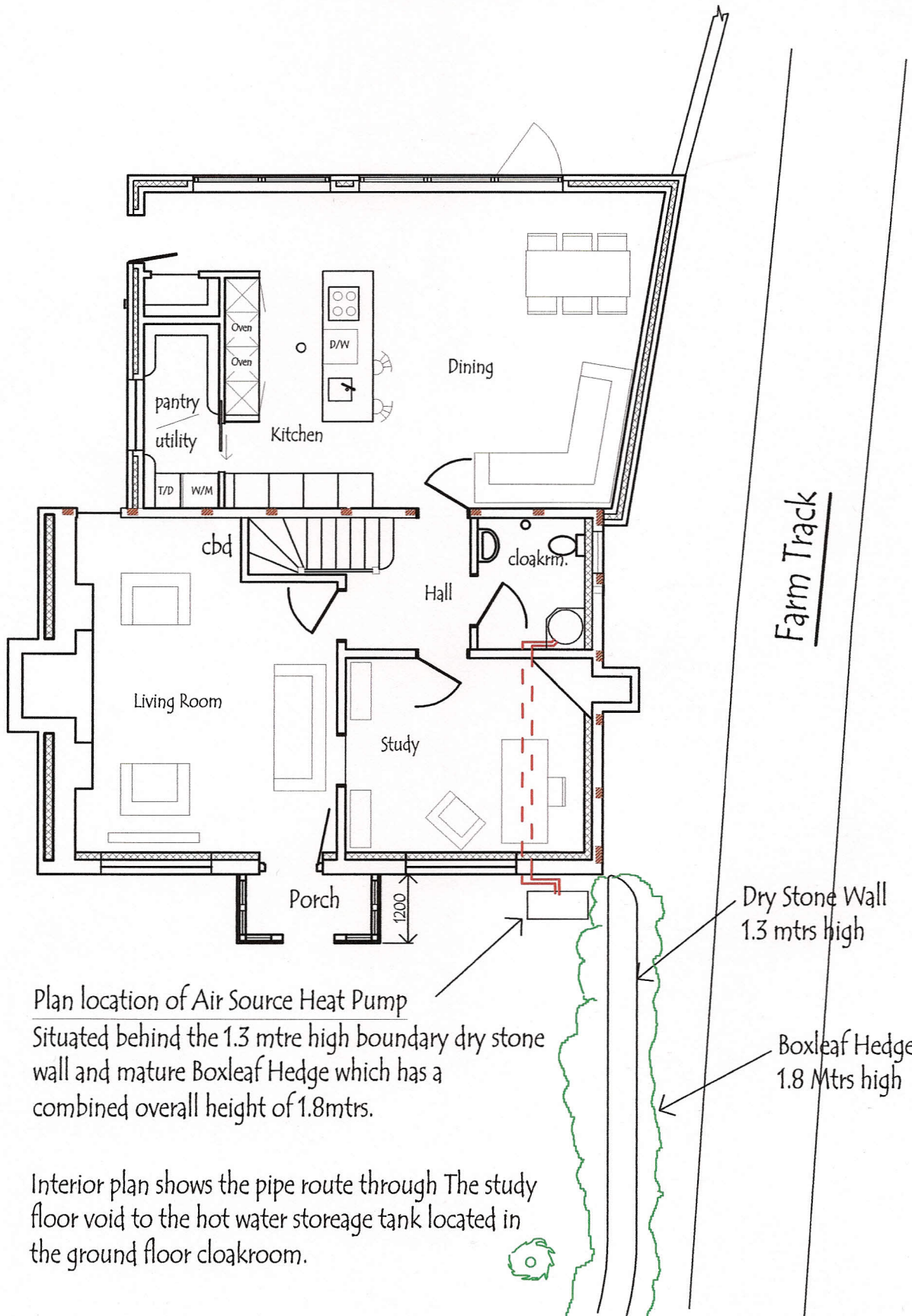


Ground Floor Plan

Application for Conservation Area Consent for installation of an Air Source Heat Pump Appliance.



Plan location of Air Source Heat Pump
Situating behind the 1.3 metre high boundary dry stone wall and mature Boxleaf Hedge which has a combined overall height of 1.8mtrs.

Interior plan shows the pipe route through The study floor void to the hot water storage tank located in the ground floor cloakroom.