

Tree Planting Schedule

ID	Latin Name	Scheduled Size	Quantity
Ace-AB	Acer x freemanii 'Autumn Blaze'	12-14, Heavy Standard, Rootballed, Double Staked	3
Aln-Au	Alnus incana 'Aurea'	14-16cm Extra Heavy Standard, Rootballed, Double Stake	10
Be-pe-Da	Betula pendula Dalecarlica	12-14, Heavy Standard, Rootballed, Double Staked	6
Be-jac-1	Betula utilis var. jacquemontii	multi-stemmed, 65L, 3m	12
Co-av	Corylus avellana	Multi stem, 2m	21
Gi-bi	Ginkgo biloba	Extra Heavy Standard, Rootballed, Double Staked	6
Ma-sy	Malus sylvestris	Standard, Barerooted, M25 Single stake	7
Pin-ni	Pinus nigra	Standard, Rootballed, Single angled stake	5
Pin-ra	Pinus radiata	12-14cm Heavy Standard, Rootballed, Double Staked	2
Qu-ro	Quercus robur	14-16cm Extra Heavy Standard, Rootballed, Double Stake	1

Shrub Planting Schedule

ID	Latin Name	Scheduled Size	Quantity
Br-Sun	Brachyglottis Dunedin Group 'Sunshine'	3L	66
Esc-ma	Escallonia macrantha	3L	34
Ol-mac	Olearia macrodonta	5L	122
Pl-PG	Pinus mugo 'Pumillo Group'	5L	14
Po-Abbo	Potentilla fruticosa 'Abbotswood'	3L	434
Po-fr-RA	Potentilla fruticosa 'Red Ace'	3L	235
			0

Native Shrub Planting Schedule

ID	Latin Name	Scheduled Size	Quantity
Co-san	Cornus sanguinea	60-80cm, 1+1 transplant, bare root	38
Fr-aln	Frangula alnus	60-80cm, 1+1 transplant, bare root	38
Il-aq	Ilex aquifolium	3L	38
Ro-ca	Rosa canina	60-80cm, 1+1 transplant, bare root	38
Sa-ni	Sambucus nigra	60-80cm, 1+1 transplant, bare root	38
Vi-lan	Viburnum lantana	60-80cm, 1+1 transplant, bare root	38
Vi-op	Viburnum opulus	60-80cm, 1+1 transplant, bare root	38
			0

Hedge Planting Schedule

ID	Latin Name	Scheduled Size	Quantity
La-Hidc	Lavandula angustifolia 'Hidcote'	5L	166
			0

Bulb Planting Schedule

ID	Latin Name	Scheduled Size	Quantity
Cro-ch	Crocus chrysanthus	5 + Corms	31
Cro-tom	Crocus tommasinianus	5 + Corms	31
Cro-ve	Crocus vernus	8/9 Corms	31
Gal-niv	Galanthus nivalis	5/6 bulb	46
Hy-NS	Hyacinthoides non-scripta	5/6 bulb	46
Na-Dw-Cy	Narcissus Dwarf Cyclamineus	10/11 bulb	61
Na-Ma-Be	Narcissus 'Ma Bell'	10/11 bulb	61
			0

Grasses / Herbaceous Planting Schedule

ID	Latin Name	Scheduled Size	Quantity
Ach-fil	Achillea filipendulina 'Cloth of Gold'	3L	74
An-le	Anemathele lessoniana	3L	114
Cal-KF	Calamagrostis acutiflora 'Karl Foerster'	2L	95
Ca-bu	Carex buchananii	3L	43
Ca-te-pf	Carex testacea 'prairie fire'	3L	209
Ec-pu-Ma	Echinacea purpurea 'Magnus'	3L	12
Mi-KS	Miscanthus sinensis 'Kleine Silberspinne'	3L	18
Ph-pa-Du	Phlox paniculata Dusterlohe	3L	26
Ru-Gld	Rudbeckia fulgida var. sullivantii 'Goldsturm'	3L	74
Sa-of-PT	Sanguisorba officinalis Pink Tanna	3L	20
Sa-oc	Scabiosa ochroleuca	3L	52
Ve-bo	Verbena bonariensis	5L	26
			0

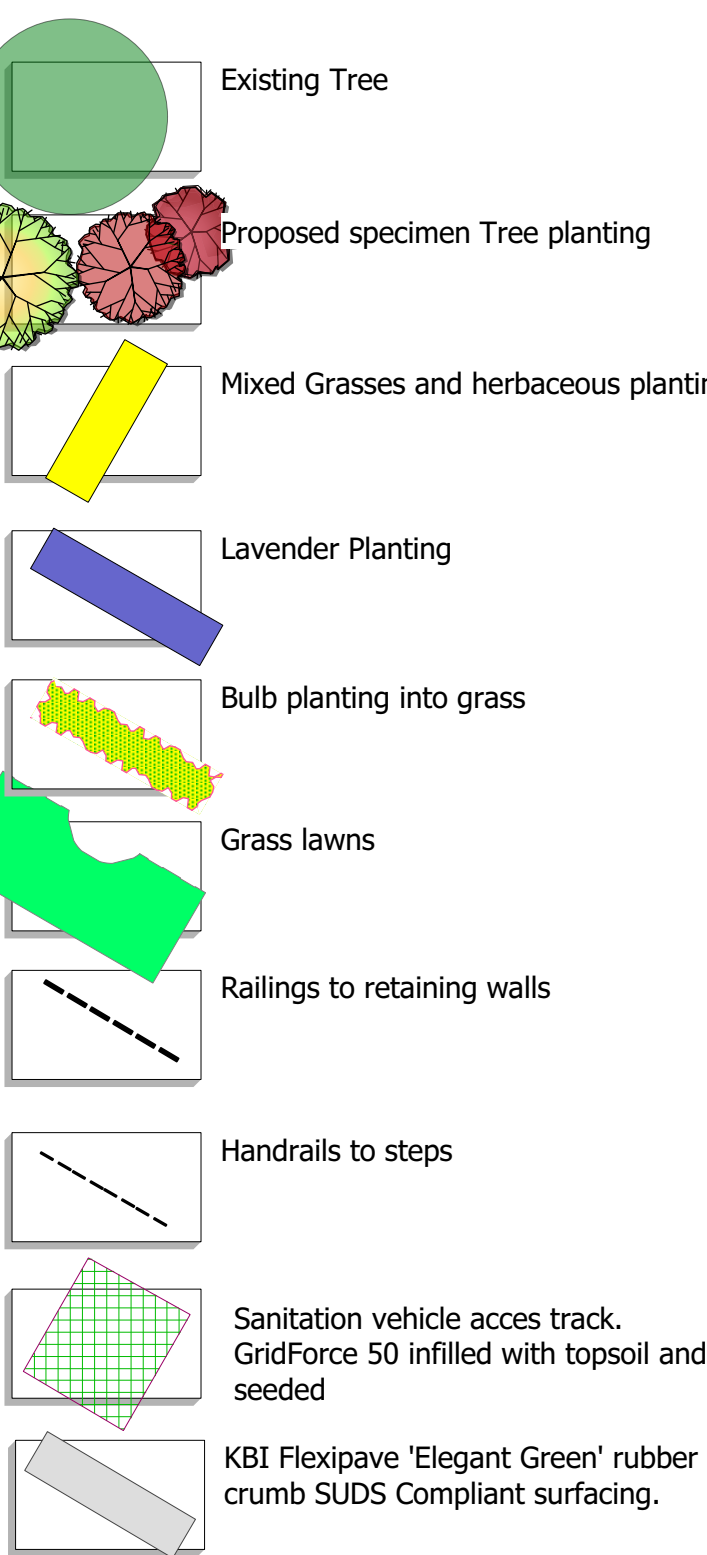
Planting Images: Herbaceous, Grasses and Shrubs



notes:

- All dimensions to be checked and confirmed onsite prior to any works.
- Do not scale off this drawing.
- Any errors, omissions or discrepancies are to be brought to the attention of Lingard Farrow Styles immediately.

key:



Planting Images: Trees



1.0 WORKMANSHIP – GENERAL

All work must be to the satisfaction of the supervising Landscape Architect.

1.1 SITE CLEARANCE

Where the site has not been wholly cleared, the Contractor shall cut, rake up and remove from site all vegetation excepting those existing plants to be retained as shown on the drawings. Roots shall be grubbed up. All rubbish and hardcore shall be removed from site to tip at the Contractors expense. Reference should made to the Tree Protection Plan.

1.2 EARTH FILL AND GRADING

When this is to form part of the works, the Contractor must firstly strip all site topsoil from the area to be filled or graded, making sure that all the existing vegetation and stones over 50mm have been removed and carted off site. Store the topsoil in uncompacted heaps not over 1.25m in height, taking care that it is not mixed with subsoil or deleterious material.

1.3 SUBSOILING AND TOPSOILING

All Topsoil to conform to BS3882:2015, all subsoil to conform to BS 8601:2013.

Soil profiles for areas of new planting:

- Grass: 150mm depth topsoil over 150mm depth subsoil

- Shrubs: 300mm depth topsoil over 300mm depth subsoil

Any levels to be made up beneath topsoil depths shall be made up by using sub-soil fill. Topsoil and sub-soil shall each be deposited in separate spoil heaps and strict precautions are essential to prevent loss or admixture of topsoil with sub-soil. The Contractor is to take all due care in the course of the earth moving work, to ensure that all deposited material is evenly consolidated and especially that any lumps of soil are completely broken up in the course of the grading work. A suitable period is, if possible, to be permitted to elapse subsequent to soil being placed to allow for major settlement prior to finishing, grading, grassing and planting.

1.4 PROTECTION OF SUPPLIED PLANTS

Plants shall be protected from root exposure and desiccation at all times, bare roots shall be heeled in properly and protected during the planting operation. Containerised plants shall be adequately watered whilst awaiting planting. Seeds shall be protected from harmful temperature/moisture fluctuations and vermin.

1.5 SHRUB CULTIVATION, PREPARATION AND PLANTING.

All shrub planting, including containerised stock, shall be carried out between November and March but not during periods of frost, drought or cold drying winds. At the time of planting and at such times as directed, all plants shall be thoroughly watered. Container grown plants should be thoroughly soaked prior to removing the container. Unsuitable plants and materials, rejected by the Landscape Architect, shall be cleared from site and replaced with satisfactory goods at the Contractors expense. The whole of the areas to be shrub planted, as shown on the drawings, are to be thoroughly cultivated to a fine tilth by hand or machine, where appropriate and broken up to not less than 300mm deep and thoroughly cleared of all extraneous matter. The Contractor is to allow for the removal from Site of all rubbish, stones and weed growth. Fill depressions in ground surface with topsoil and lightly compact in 150mm layers until surface is level with surface of surrounding ground. Prior to planting, fork in a 50mm layer of composted bark, composted garden waste or mushroom compost. Bring the soil to an even tilth and necessary firmness.

1.6 BARK MULCH

After planting spread bark mulch to a depth of 75mm over all planted areas. Mulch shall be graded softwood bark flakes. Nominal particle size – as measured using BS sieving techniques – shall be 10-40mm with no more than 15% below 10mm. Material consisting largely of long thin particles will not be accepted. The bark shall have been removed from the parent timber and matured for a minimum of four months prior to application as mulch. Combined timber/sawdust/shaving content shall be no more than 5%. The pH shall be between 4 and 7. Available manganese content shall be no greater than 35 PPM. It shall be free flowing, pest, disease and weed free. The Contractor shall supply a small representative quantity to the Landscape Architect for approval. All mulch used must be of equal quality as the approved sample. The Contractor shall keep the initial load for comparison. The quality must be maintained throughout and any delivery below the standard of the approved sample will be rejected and must be carried away at the Contractors expense, as must any surplus mulch. When completed ensure that the mulch is not spread over paving or other hard surfaces.

1.7 BARK MULCH

After planting spread bark mulch to a depth of 75mm over all planted areas. Mulch shall be graded softwood bark flakes. Nominal particle size – as measured using BS sieving techniques – shall be 10-40mm with no more than 15% below 10mm. Material consisting largely of long thin particles will not be accepted. The bark shall have been removed from the parent timber and matured for a minimum of four months prior to application as mulch. Combined timber/sawdust/shaving content shall be no more than 5%. The pH shall be between 4 and 7. Available manganese content shall be no greater than 35 PPM. It shall be free flowing, pest, disease and weed free. The Contractor shall supply a small representative quantity to the Landscape Architect for approval. All mulch used must be of equal quality as the approved sample. The Contractor shall keep the initial load for comparison. The quality must be maintained throughout and any delivery below the standard of the approved sample will be rejected and must be carried away at the Contractors expense, as must any surplus mulch. When completed ensure that the mulch is not spread over paving or other hard surfaces.

1.8 LAWN SEEDING

The Contractor shall carry out seeding/turfing and maintenance of seeded areas in accordance with the seed/turf supplier's guidance. Areas for seeding/turfing should be on firm bed not compacted topsoil of minimum 150mm depth that has been broken up to full depth (except within in Root Protection Areas). The surface should be reduced to a fine tilth and areas to be seeded/turfed should be free of weeds. Surface stones exceeding 10mm should be removed prior to seeding/turfing.

1.9 ADDITIONAL NOTES

Mulched areas: inspect and top-up mulch areas annually, as per 1.8. Watering during 2 years establishment period: as required to ensure thriving, notably during dry spells and in summer. Remove arisings.

N.B. No peat to used in the preparation or planting.

lingard.farrow.styles
landscape architects • urban designers / environmental consultants

rev:	date:	description:
-	xx/xx/xx	first issue

tel: 0333 4561132 fax: 01743 243602
email: info@lingardstyles.co.uk
9 College Hill, Shrewsbury Shropshire, SY1 1LZ
The Studio, Farm Lodge, Leighton, Welshpool, Powys, SY21 8HJ

client / project:



Land at the Lord Hill Hotel
Shrewsbury
PHASE 2

title:

Landscape Proposals

dwg. no:	rev:	scale:	drawn:	chkd by:
3083-002		1:200 @ A1	TF	XX

DO NOT SCALE FROM DRAWING. © DRAWING IS COPYRIGHT