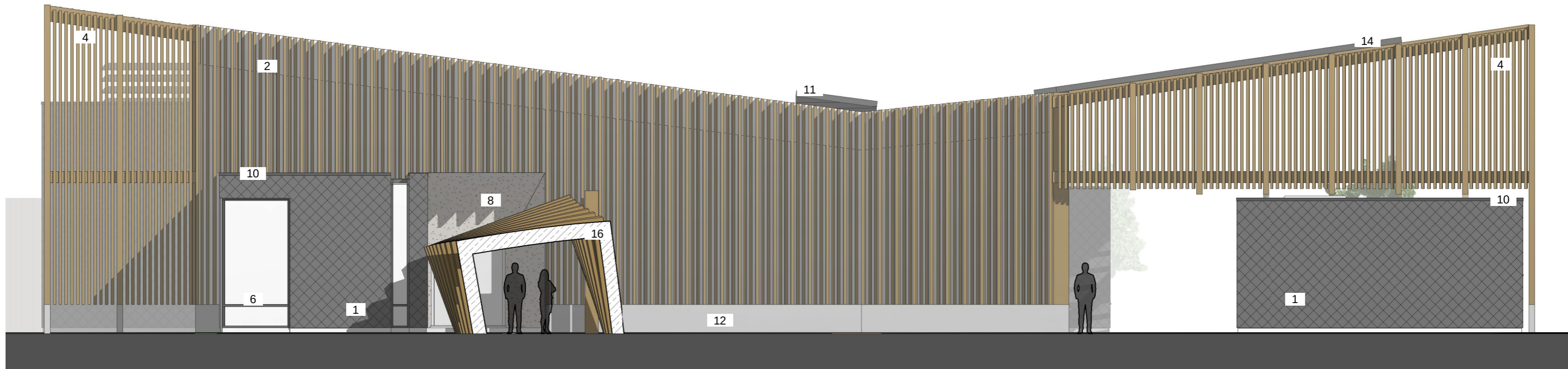
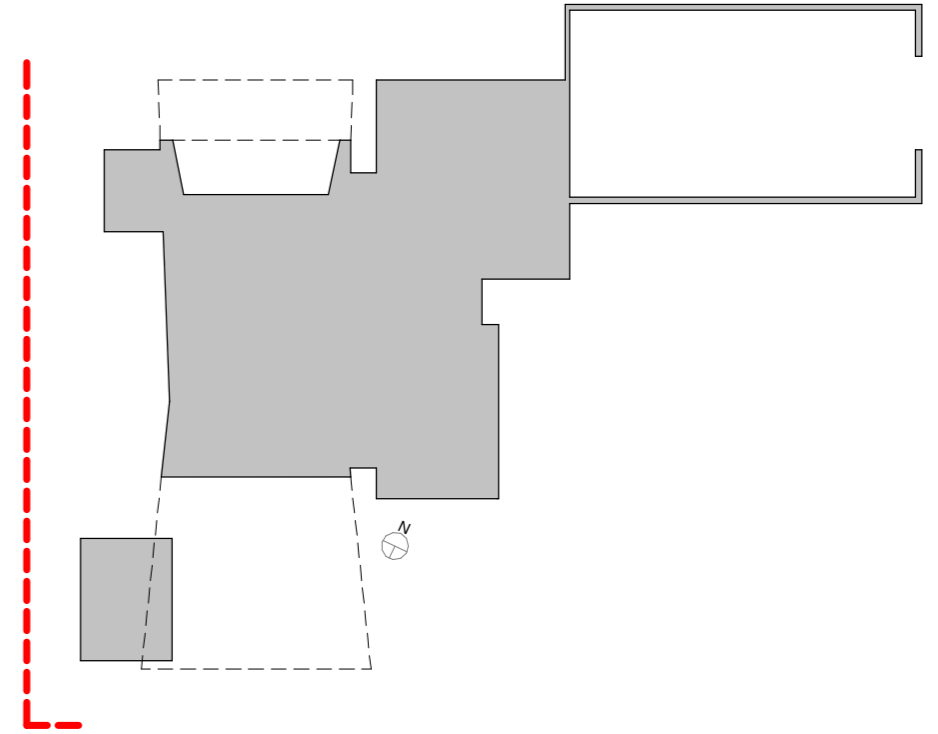


Materials Legend

- 1 - Recycled Plastic Shingles - Grey
- 2 - Vertical Timber Cladding
- 3 - Composite Facade Board - Dark Grey
- 4 - Composite Timber Framed Canopy
- 5 - PPC Aluminium Framed Curtain Glazing
- 6 - PPC Aluminium Framed Windows
- 7 - PPC Aluminium Framed Doors
- 8 - Render
- 9 - Timber Fencing
- 10 - PPC Aluminium Coping
- 11 - Roof Glazing on Upstand
- 12 - Concrete Upstand
- 13 - PPC Aluminium Plant Screening Louvres
- 14 - Sloped Patent Glazing Canopy
- 15 - Ventilation Louvres
- 16 - Timber Framed Flower Court Canopy



BENCHMARK
ARCHITECTS

Project Title: East Cambridge DC Crematorium
 Drawing Title: Proposed South West Elevation
 Client: East Cambridge DC
 Date: 10/01/20
 Scale @ A3

Project No: 19052
 Drawing No: 03-05-004
 Revision: