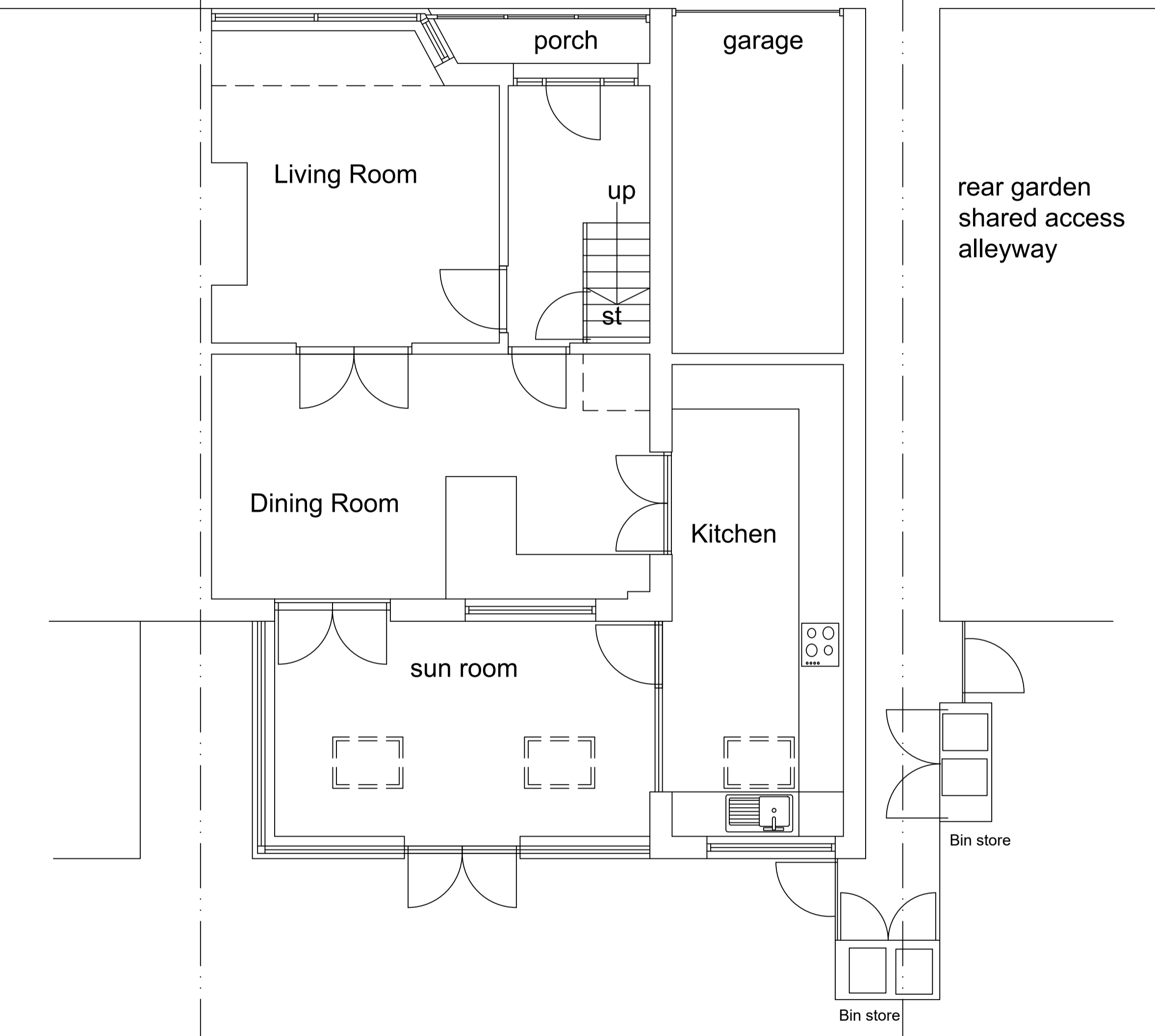


56

58

60

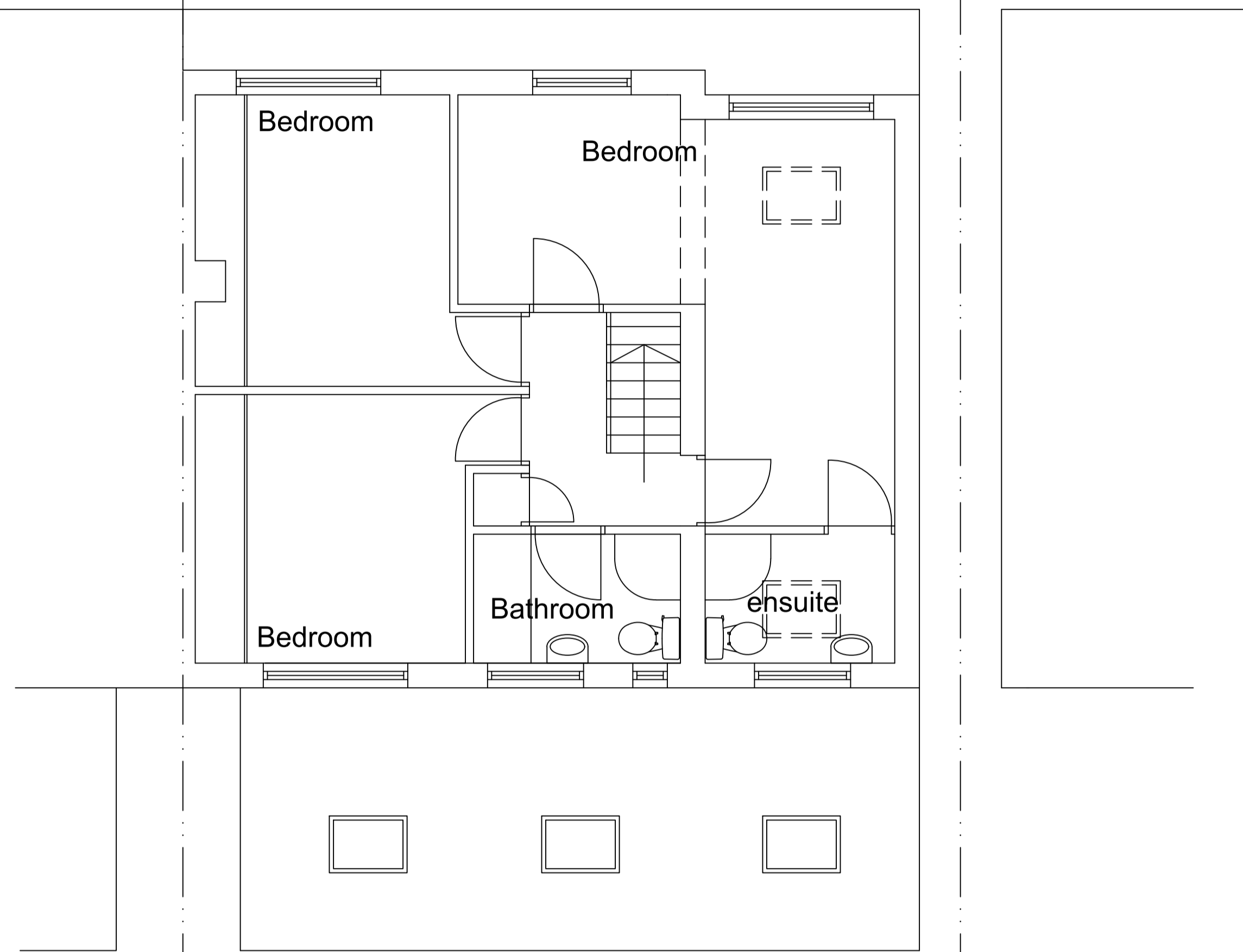


Ground Floor Plan

56

58

60



First Floor Plan

--	--	--	--

Issue	Date	By	Checked

Drawing Status **Planning**

Plot ID

Scale **1:50 @ A1** Date **September 2020**

Job No.	Drawing No.	Issue
2012	2012/05	-

Project: **58 Lombard Drive, Chester le Street**

Title	7 Axwell Park School Houses, Blaydon on Tyne, Gateshead, NE216RN
Proposed Plans	

© This drawing is protected by copyright tel 07497098696

WKisharchitects