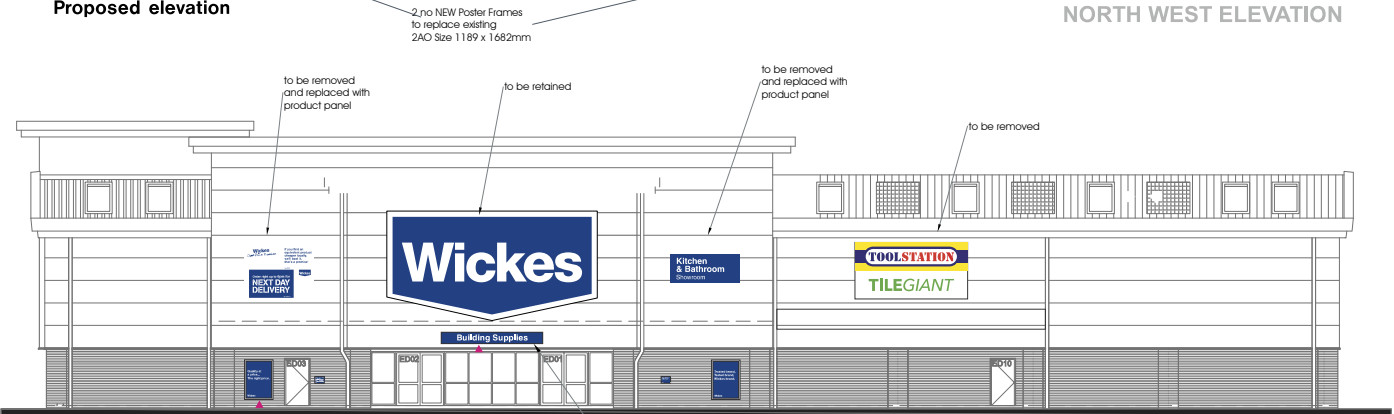


Proposed elevation

NORTH WEST ELEVATION



Existing elevation

NORTH WEST ELEVATION



Proposed



Existing

Sign No.	Product Letters
Sizes	Sign 2a) - Tray 5323 x 1550 x 50mm Sign 2(b) - Tray 4807 x 1550 x 50mm
Details	2no sets of flat cut 2mm aluminium letters, wet sprayed White. Letters fixed to aluminium trays on welded studs complete with brass/nickel Locators. Trays to be powder coated to Ral 5008
Fixing Details	Aluminum angle
Illumination:	Non Illuminated
Sign No.	Wickes Sign
Sizes	9630 x 4855mm
Details	Box to be retained 1 no. new digital printed skin to be installed to existing blackclip box.
Illumination:	Illumination to border and text only Existing LED to be retained
Sign No.	Sign 3 - Welcome
Sizes	Size: 1975 x 400mm Returns: 30mm Fixing Lip: N/A
Details	1no folded aluminium tray with 30mm returns and powder coated into colour, complete with face applied vinyl letters.
Illumination:	Non Illuminated
Fixing Details	Aluminum angle
Sign No.	Poster Frames
Sizes	Size: 2AO Size 1189 x 1682mm 2 no. Required to replace existing



DRG. NO.	Date	Checked	Rev.	Date	Initial	Revision Detail
80467-F	16/06/21		F	21.07.21	TB	Added Poster Frames
Drawn By	Scale	Drawing Status	B	28.06.21	TB	added welcome
TB	NTS	Production	C	01.07.21	TB	changed product panels
			D	07.07.21	TB	changed product panels
			E	13.07.21	CW	Survey Notes Rec'd

This Drawing & information contained may not be copied or used without prior consent from Spencer Signs. Colour shown may not accurately match any colour references. Sizes in mm unless stated otherwise.

Specification checked and approved for Production By
(sign & print name)

Typeface(s)/Colours Helvetica Bold / Black

P288 C	P432 C	White	50x50 12g Zinc Mesh
RAL5002	RAL5008		

General Notes:

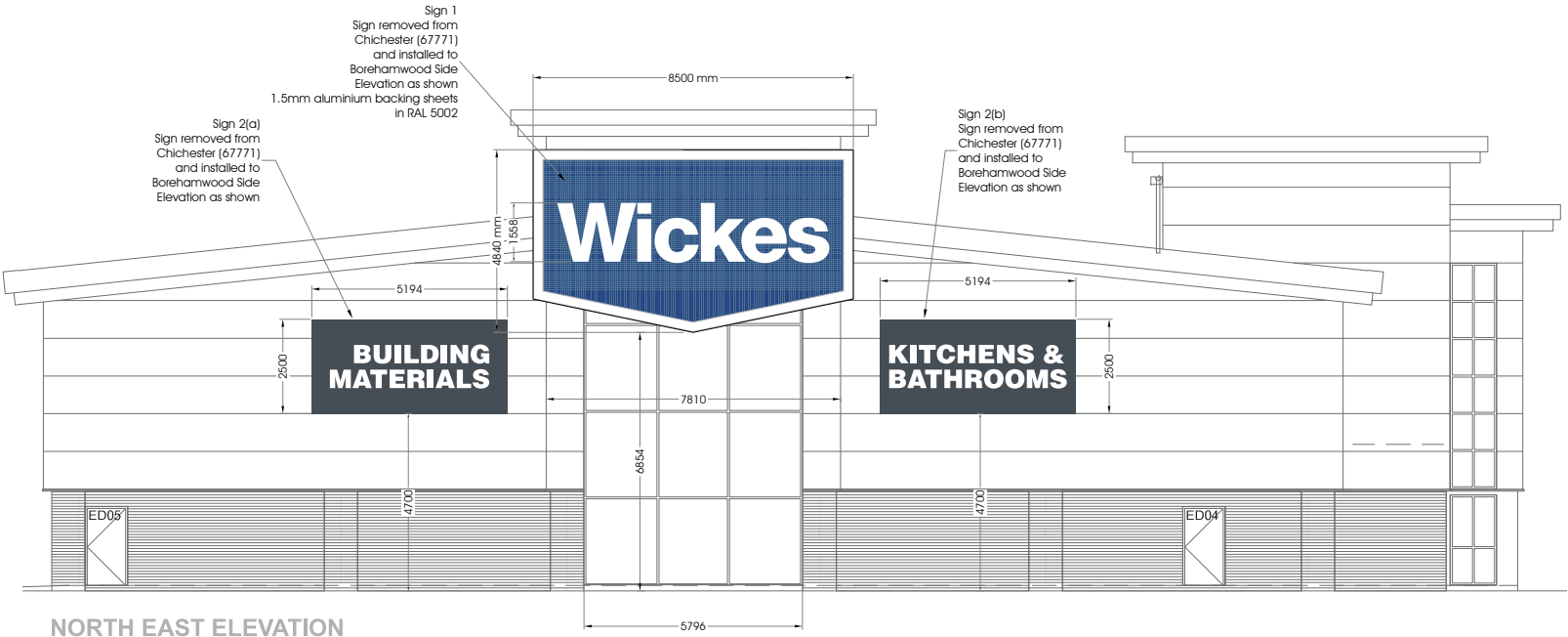
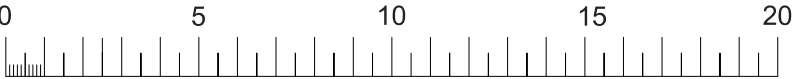


Photo Impression



Existing



SCALE BAR METRES 1:200

Sign No.	Sign 1
Details	Description: Existing installed signs at Chichester to be removed and relocated to Borehamwood Side Elevation as shown. Reference Drawing: 67771 New acrylic letters faces required and 1.5mm Aluminium Backing sheets in Ral 5002
Sizes	8500 x 4840mm 150mm Returns Overall
Illumination:	Internal LEDs to illuminate Letters and Border only.
Fixing Details	TBC on Survey

Sign No.	Sign 2(a) & 2(b)
Details	Description: Existing installed retroframes at Chichester to be removed and relocated to Borehamwood Side Elevation as shown. Reference Drawing: 67771
Sizes	5194 x 2500mm 200mm Returns Overall
Illumination:	Non Illuminated
Fixing Details	TBC on Survey

See Drawing 80376 - for Sign Details

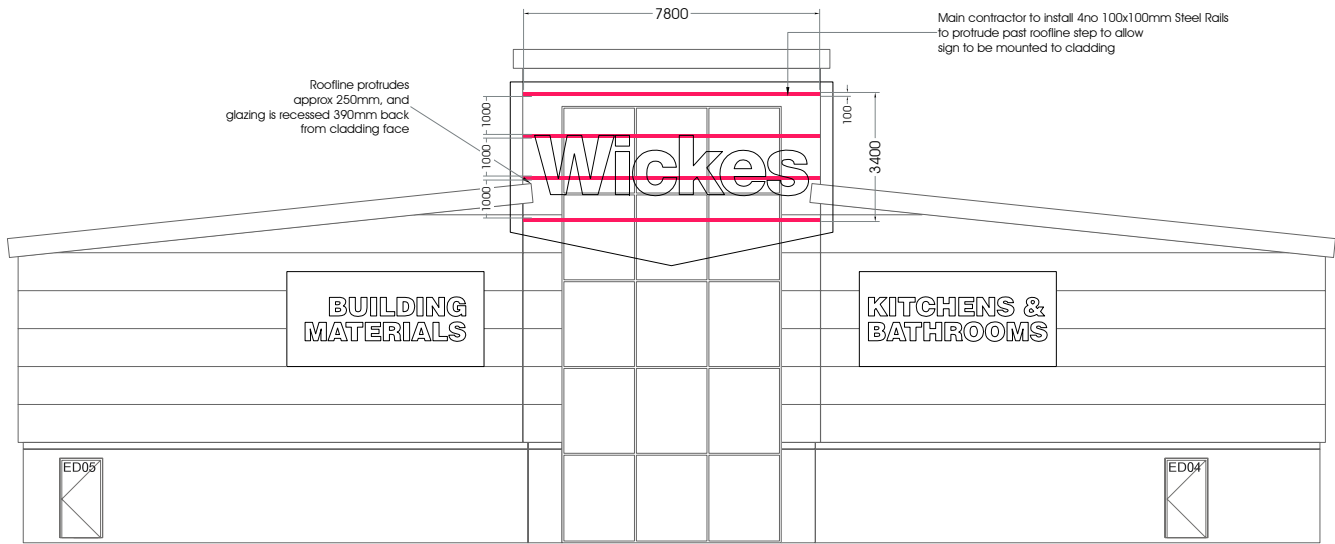


Photo Impression

Sign No. Sign 1 - Rails Required

Details Description:
Main contractor to provide minimum 4no steel rails which will protrude further forward then roofline.

Sizes This will provide fixing locations for oversized sign as proposed
100 x 100mm Recommended



DRG. NO.	80700	Date	13/07/21	Checked	
Drawn By	CW	Scale	1:200@A4	Drawing Status	Production

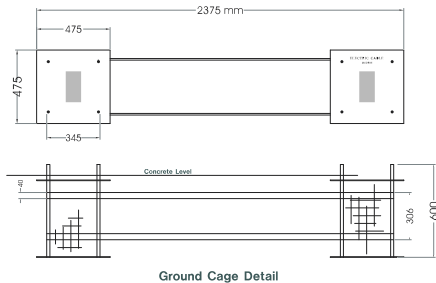
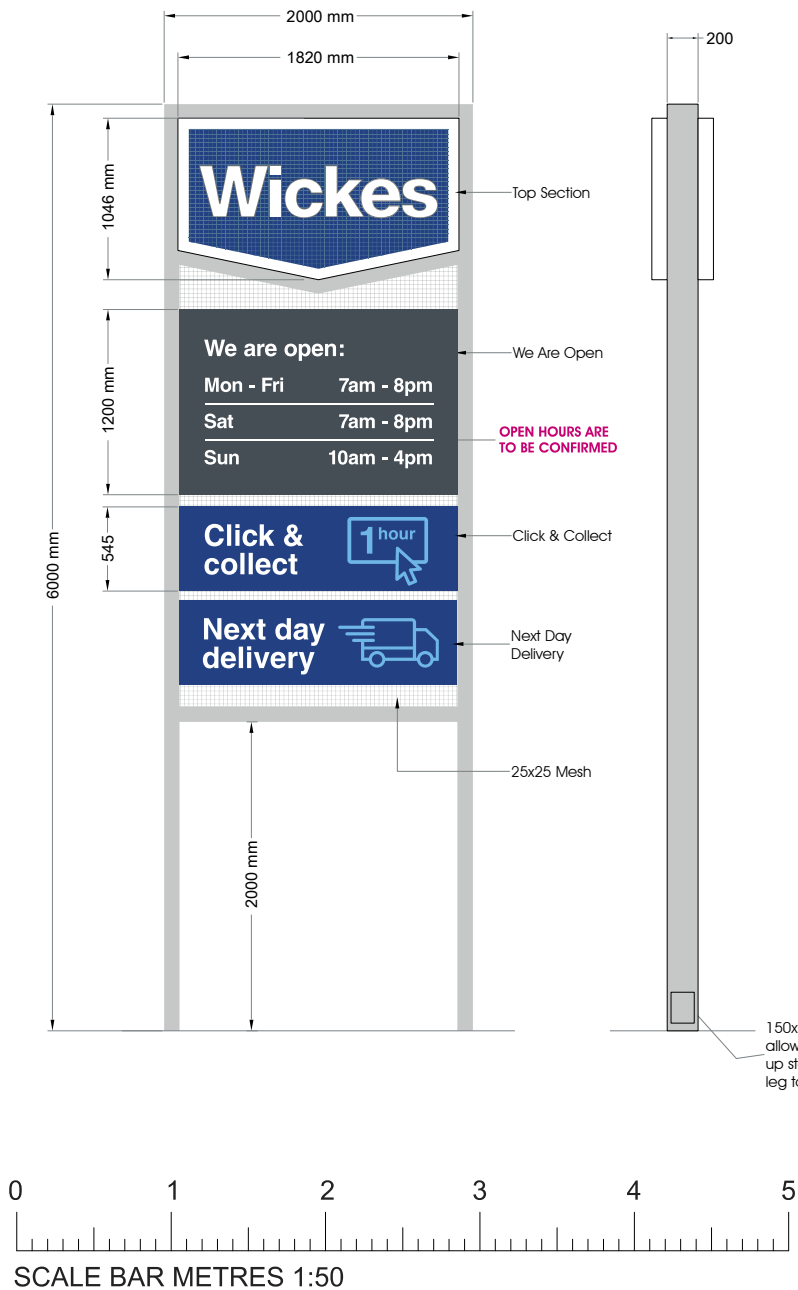
This Drawing & information contained may not be copied or used without prior consent from Spencer Signs. Colour shown may not accurately match any colour references. Sizes in mm unless stated otherwise.

Specification checked and approved for Production By (sign & print name)

Typeface(s)/Colours	Helvetica Bold / Black		
P288 C	P432 C		
RAL5002	RAL5008	White	50x50 12g Zinc Mesh

General Notes:
Add any additional note requests from requests

Standard Letter Jig Used: ☐

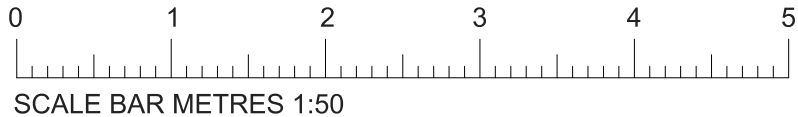


Proposed (NTS)



Existing

Sign No.	Totem Sign (1no d/sided totem) Overall Size: 2000 x 6000mm
Details	Wickes - Top Section 2no of retroframes
Sizes	1820 x 1046mm Returns: 200mm Each
Backtray	Backtray: Yes Material: 3mm Aluminium
Face Display	Face Display: PVC Skin Size: 334mm 'W' Cap Height Description Digitally printed blockout PVC skin
Finish	Backtray: Powder Coated RAL5002
Illumination	Internal LED Illuminated to Letters and Border only, background is blockout.
Fixing Details	Fixing Substrate: Steel Frame Retroframes fixed back to back on internal galvanised steel frame through backtrays.
Details	Hours/Click/Delivery 2no of aluminium trays off each
Sizes	See Artwork Returns: 50mm Each Tray
Backtray	Backtray: No Material: N/A
Face Display	Face Display: Fret cut, backed off Description Detail fret cut and backed off with 5mm opal acrylic. Backtray: P/Coated RAL5008/5002
Finish	Internal LED Illuminated to Letters. LEDs mounted to cross rails along the top & bottom edge of tray.
Fixing Details	Fixing Substrate: Angle Cross Rails Trays fixed back to back.
Mesh	25x25mm galvanised 12g Zinc. Mesh fixed to top framework inbetween folded trays as shown on drawing. Joints in mesh to be fixed with small clear tie-wraps.



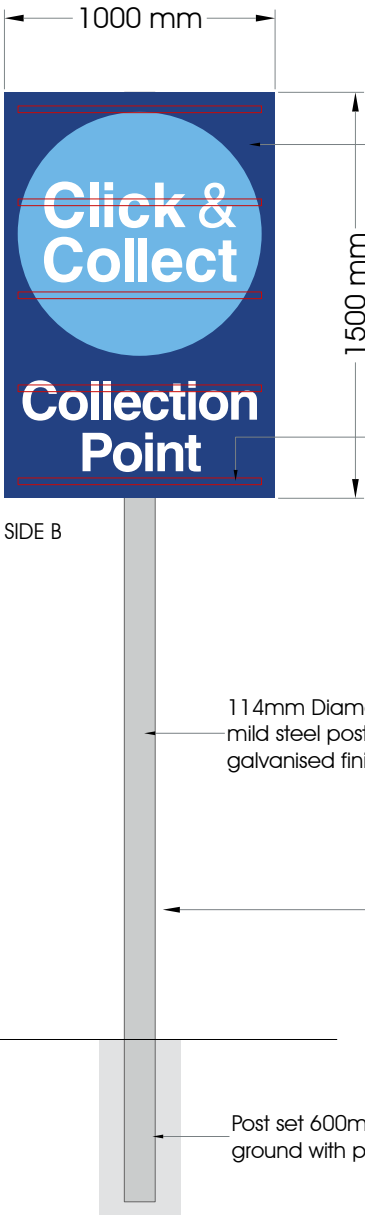
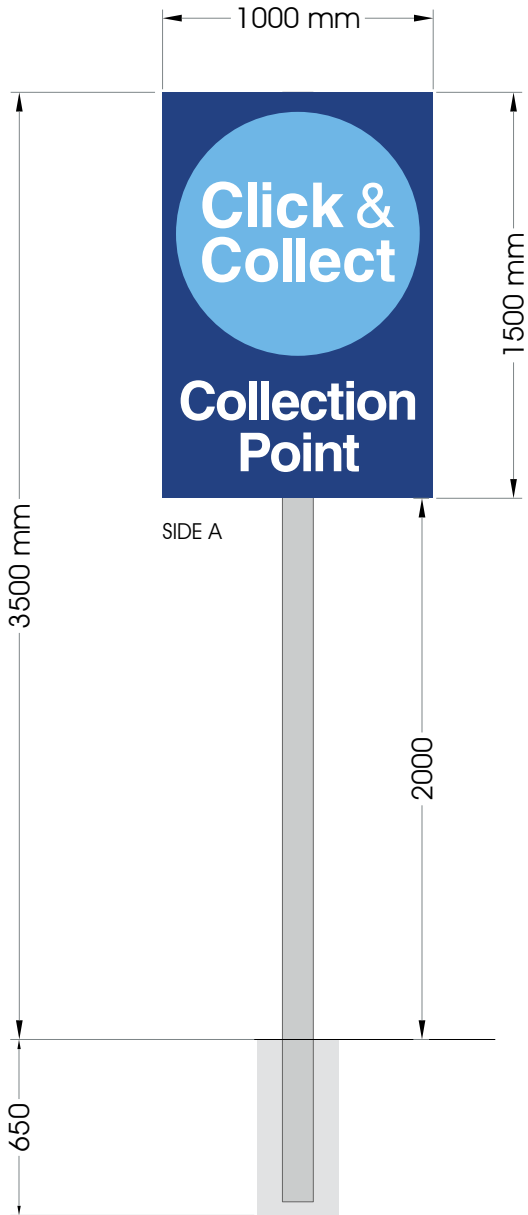
This Drawing & information contained may not be copied or used without prior consent from Spencer Signs. Colour shown may not accurately match any colour references. Sizes in mm unless stated otherwise.

<div>SPENCER</div> <div>SIGNS</div> <div>Unit 1, 70 Scarborough St., Hatf. HD3 4TG Tel: 01482 320797 www.spencersigns.co.uk email: design@spencersigns.co.uk</div>	DRG. NO. 80497	Date 22.06.21	Checked 	Rev.	Date	Initial	Revision Detail	Specification checked and approved for Production By (sign & print name)	Typeface(s)/Colours (use actual type) <div><div>P288 C</div><div>P432 C</div><div>70%</div><div></div><div></div><div>RAL5002</div><div>RAL5008</div><div>Cyan</div><div>White</div><div>50x50 12g Zinc Mesh</div></div>	General Notes:
	Drawn By TB	Scale 1:50@A4	Drawing Status Production							

SIGN CP01 - COLLECTION POINT MAIN SIGN



Sign No.	Sign CP01
Details	Description: Double sided freestanding sigs comprising of 2no flat aluminium panels, mounted back to back on single post.
Sizes	Overall above Ground: 1000 x 3500mm Panel Size: 1000 x 1500mm
Face Display	Face Display: Applied Vinyl Detail
Finish	Wet sprayed Aluminium RAL5002 with applied vinyl detail
Illumination:	Non Illuminated
Fixing Details	Aluminium panels fixed back to back via 5no rows of double sided sign-fix clips. Steel Posts to be postcreted into ground.

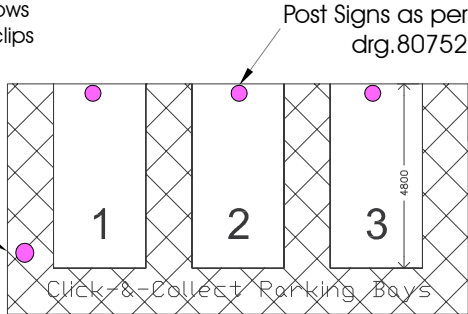


Flat aluminium panel with applied vinyl

Panels mounted back to back on single post with 5no rows of double sided sign-fix clips

114mm Diameter CHS mild steel post with galvanised finish




Post set 600mm into ground with postcrete



Supply Post Protector as below details for each post from broxap.com/lamp-post-protector

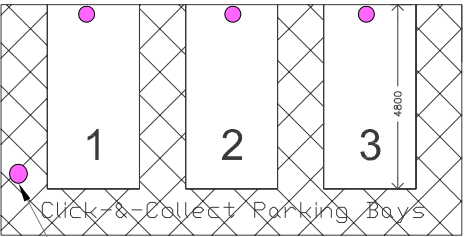
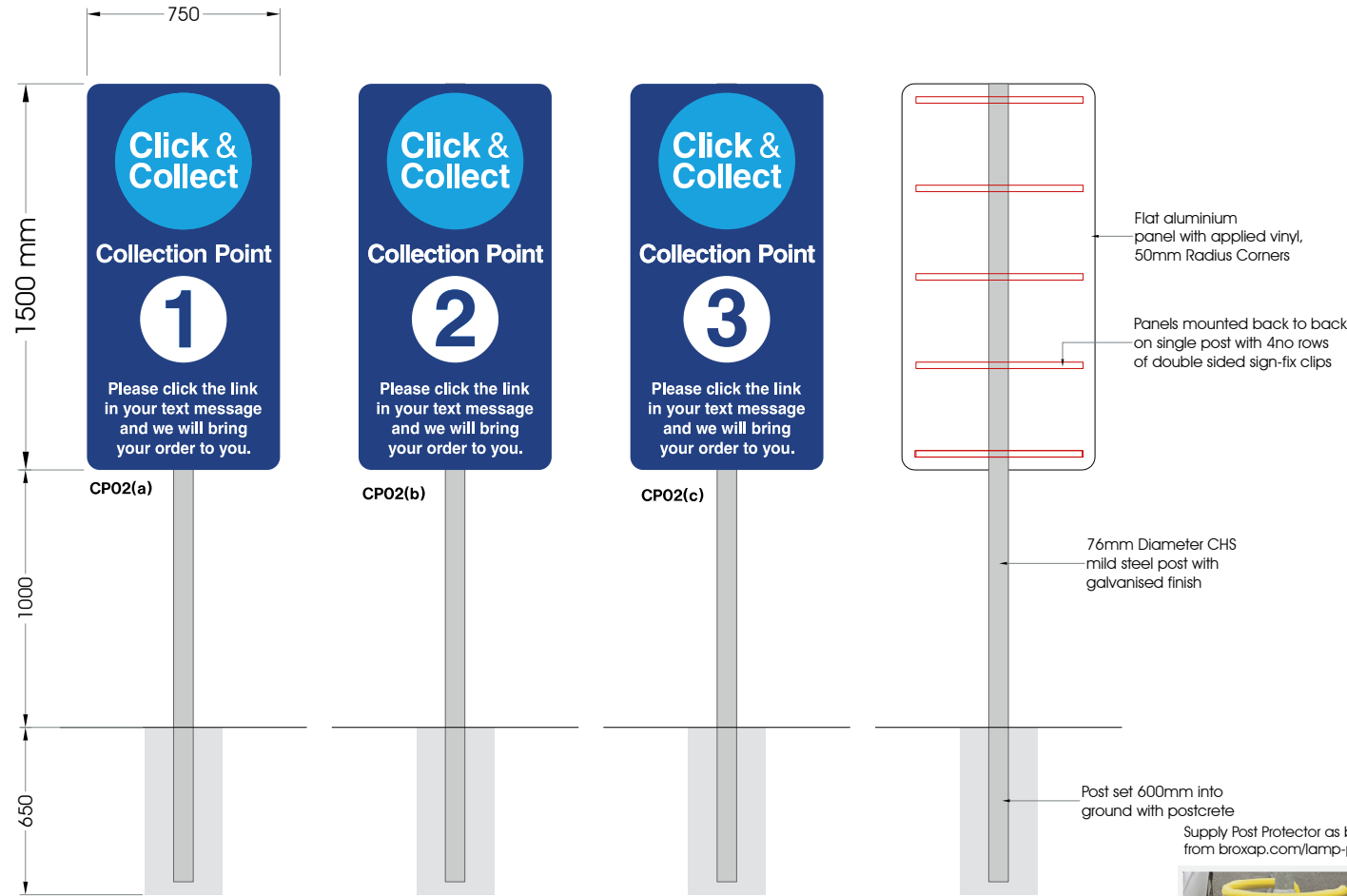


Lamp post protector
Dia. Tube: 60mm
Gauge: 5mm
Height: 1000mm
External Dia. 750mm

	DRG. NO. 80753	Date 21.07.21	Checked 	Rev.	Date	Initial	Revision Detail	Specification checked and approved for Production By (sign & print name)	Typeface(s)/Colours Helvetica Bold / Black	<div><div>P288 C</div><div>70%</div><div></div></div> <div><div>RAL5002</div><div>CYAN</div><div>White</div></div>	General Notes:
	Drawn By TB	Scale 1: 20@A3	Drawing Status Production								

P288 C	70%	
RAL5002	CYAN	White

SIGN CP02 - BAY SIGNS - FIX SINGLE SIDED

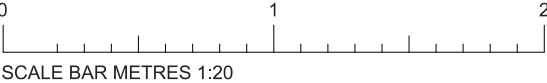


Supply Post Protector as below details for each post from broxap.com/lamp-post-protector



Lamp Post Protector - Round
BX14.6539R
Round steel lamp post protector.
Dimensions:
• Dia. Tube: 60mm
• Gauge: 5mm
• Height: 1050mm
• External Diameter 750mm

Sign No.	Sign CP02
Details	Description: Each sign to be SINGLE sided freestanding signs comprising of 2no flat aluminium panels, mounted back to back on single post. Bay No. Detail to read as per Installation Guidelines.
Sizes	Overall above Ground: 750 x 2500 mm Panel Size: 750 x 1500mm
Face Display	Face Display: Applied Vinyl Detail
Finish	Wet sprayed Aluminium RAL5002 with applied vinyl detail
Illumination	Non Illuminated
Fixing Details	Aluminium panels fixed back to back via 4no rows of single sided sign-fix clips. Steel Posts to be postcreted into ground.



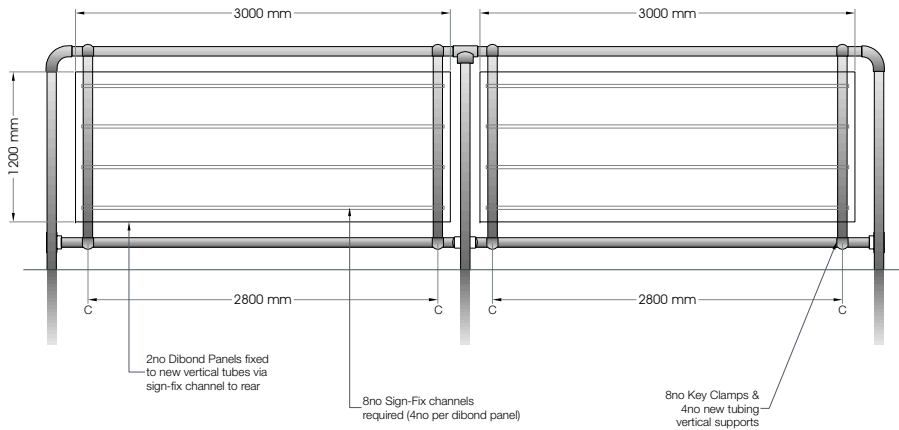
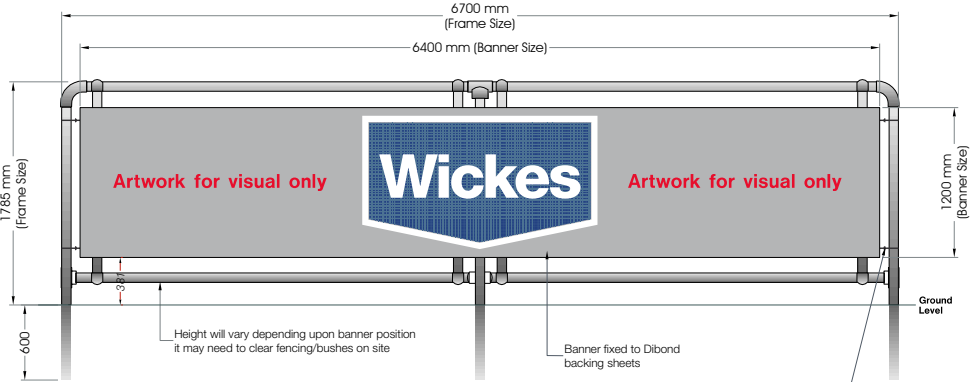
DRG. NO.	80752	Date	21.07.21	Checked		Rev.	Date	Initial	Revision Detail
Drawn By	TB	Scale	1:20@A3	Drawing Status	Production				

This Drawing & information contained may not be copied or used without prior consent from Spencer Signs. Colour shown may not accurately match any colour references. Sizes in mm unless stated otherwise.

Specification checked and approved for Production By (sign & print name)

Typeface(s)/Colours	Helvetica Bold / Black	
P288 C	70%	
RAL5002	CYAN	White

General Notes:



Proposed (NTS)

Sign No.	Permanent Banner Frames
Details	Description: Exterior Banner Frames Galvanized steel frames 2no dibond backing sheets
Sizes	Size: 6700 x 1785mm Frame Banner 6400 x 1200mm Returns: N/A Fixing Lip: N/A
Illumination:	Non Illuminated
Fixing Details	Fixing Substrate: Soft Earth Frames to be set into ground using post-mix.
Quantity Req.	3

	DRG. NO. 80751	Date 21.07.21	Checked 	Rev.	Date	Initial	Revision Detail	Specification checked and approved for Production By (sign & print name)	Typeface(s)/Colours	General Notes:
	Drawn By TB	Scale NTS	Drawing Status Production							