

Site Plan
1:500 Scale

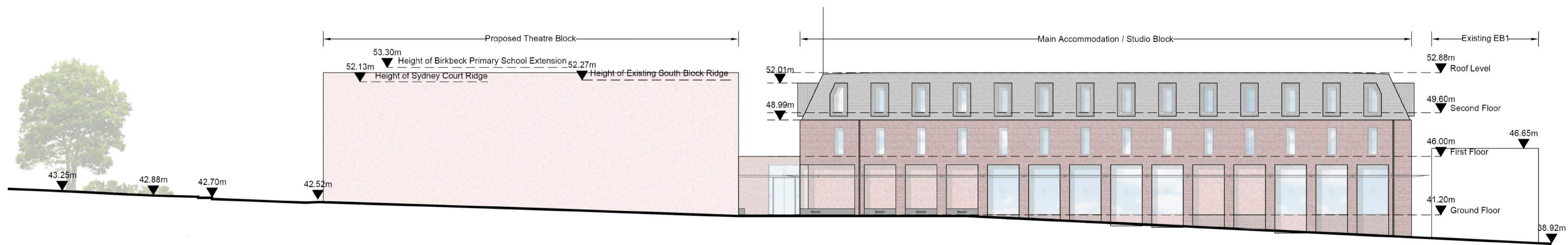


Elevation A
1:200 Scale

Proposed Development is a maximum of 600mm higher (except the theatre plant which is 1600mm higher) than the existing Bird College buildings and follows a similar footprint to the existing site layout and buildings.



Elevation B
1:200 Scale



Elevation C
1:200 Scale



Elevation D
1:200 Scale

- Notes:
1. Contractor to check all dimensions and report omissions and errors to the Architect.
 2. Hamilton Architects LLP accepts no liability for use of this drawing by parties other than the party for whom it was prepared or for purposes other than those for which it was prepared.
 3. If this drawing is issued in digital format as an uncontrolled version to enable the recipient to prepare their own documents/drawings/models for which they are solely responsible. This drawing is based on project information current at the time of issue. Hamilton Architects LLP accepts no liability for any alterations or additions to or discrepancies arising out of any change to such project information that occurs after it is issued by Hamilton Architects LLP.
 4. This drawing does not contain shared coordinates and is not issued for coordination purposes.

Rev	Comment	Date	Initial	CHK'd

Bird College Accommodation and Dance School
Alma Road, Sidcup DA14 4ED, SE London

Proposed Main Accommodation/Studio Block Elevations

Preliminary As Noted@A1 03.07.2020

Project No	Originator	Zone	Level	Type	Role	Number	Rev
19055	HAM	XX	XX	XX	X	(01)05	

