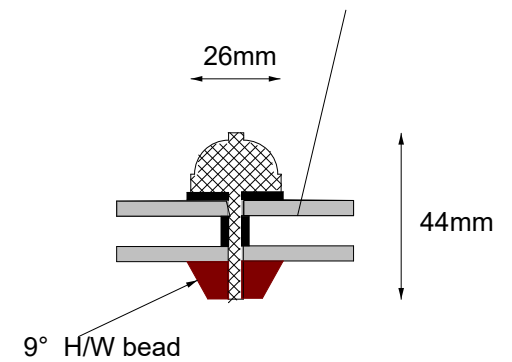
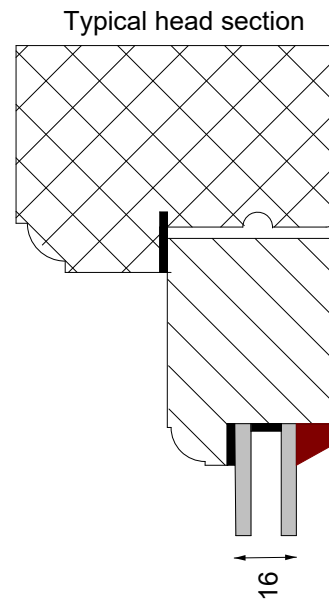
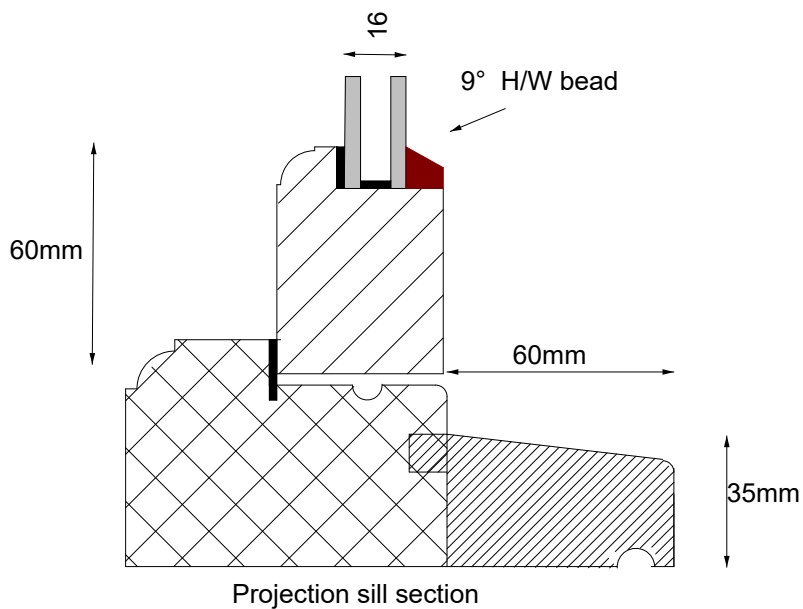


Generally 4.8.4 A rated edge units
Argon filled soft coat warm edge spacer bar
either silver or black to fit between glazing
bars as individual units.



Notes

All flush windows traditionally made mortice, tenon over edge detail scribe jointed as required.

materials and specification as described and set out in the individual client quotation written document

Casements hung on traditional butt hinges, all ironmongery furniture as detailed in the customer estimate document

Glazing as estimate document generally 16mm units, argon filled soft coat warm edge, tight tape seals .

