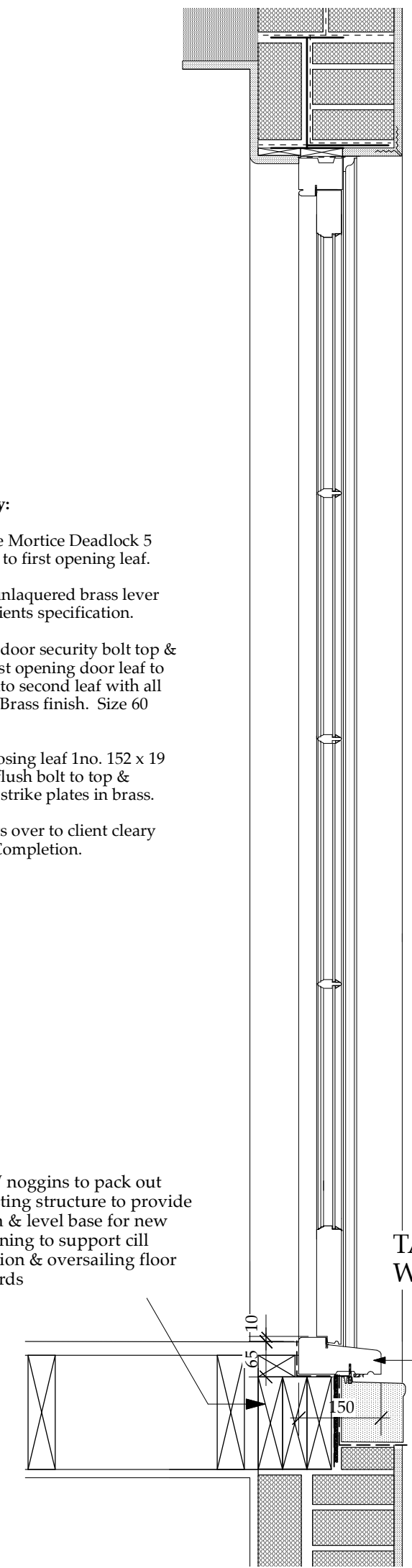


EXTERNAL ELEVATION
scale 1:10

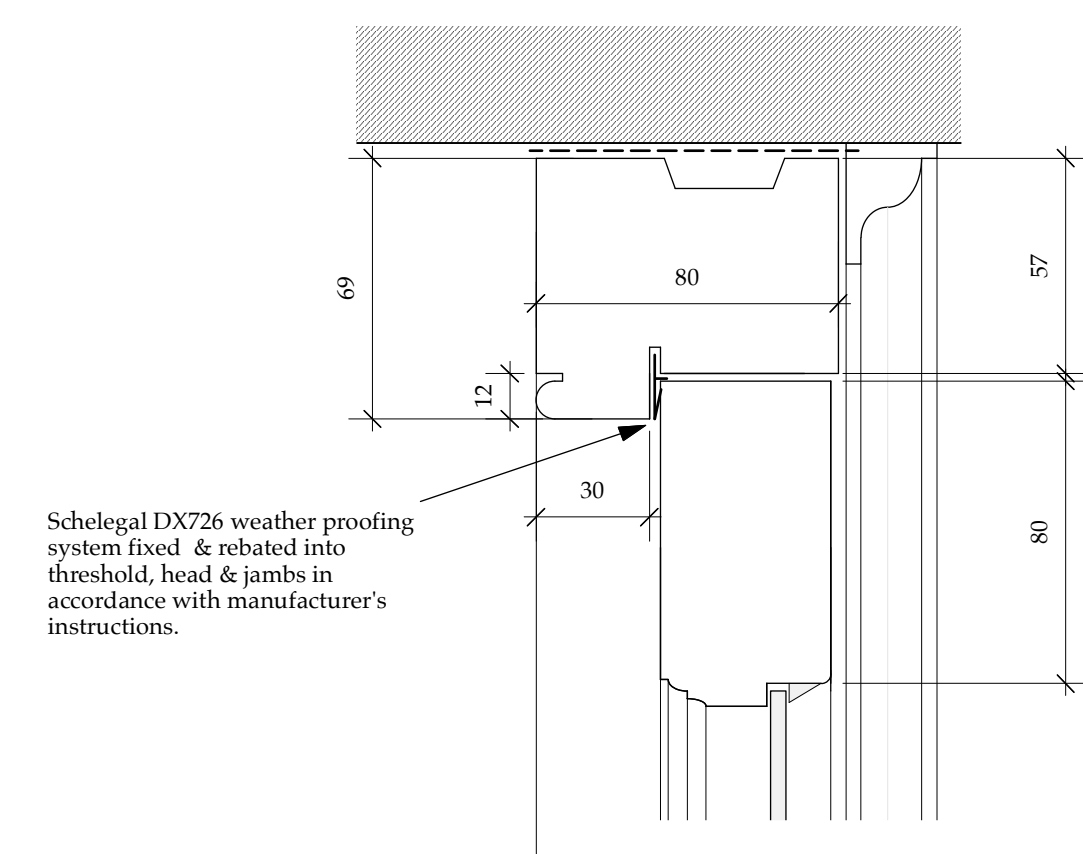
Ironmongery:

Narrow Style Mortice Deadlock 5 lever BS3621 to first opening leaf.
2 no sets of unlaquered brass lever handles to clients specification.
Ino. rebated door security bolt top & bottom to first opening door leaf to fix through into second leaf with all back plates. Brass finish. Size 60 mm.
To fix first closing leaf Ino. 152 x 19 lever action flush bolt to top & bottom with strike plates in brass.
Hand all keys over to client clearly labelled on completion.

Break out and insert 1 no. 203 x 133 x 30 UB with 150 x 8 mm plate welded to bottom flange. Wrap lintol in DPM. Minimum bearing 150 mm each end. Pin & prop structure to provide adequate support throughout. Square opening.
Make up structure by placing blocks on plate to finish flush with existing structure.
Render to match existing finish with galv. render stops & angle beads (M20).



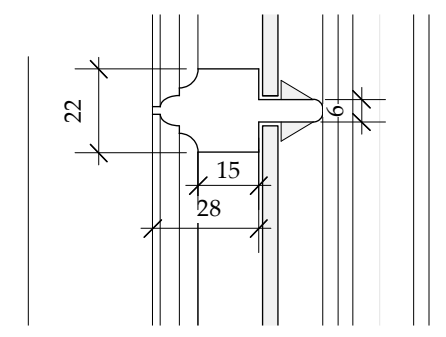
VERTICAL SECTION
scale 1:10



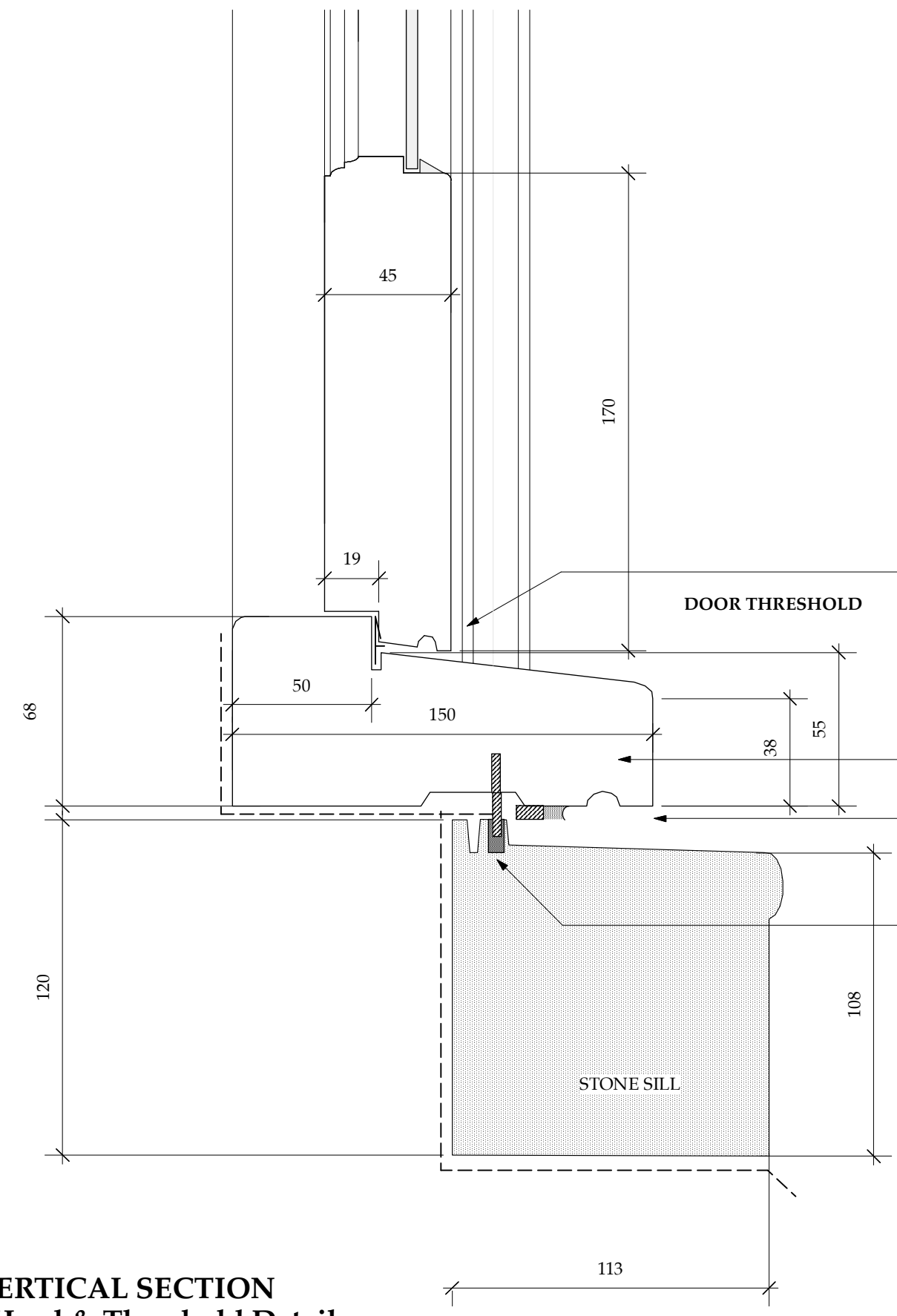
DOOR HEAD

Schelegal DX726 weather proofing system fixed & rebated into threshold, head & jambs in accordance with manufacturer's instructions.

All glazing to be 4.5 mm laminated safety glass



GLAZING BEAD



VERTICAL SECTION - Head & Threshold Details
scale 1:2

Schelegal DX726 weather proofing system fixed & rebated into threshold in accordance with manufacturer's instructions.

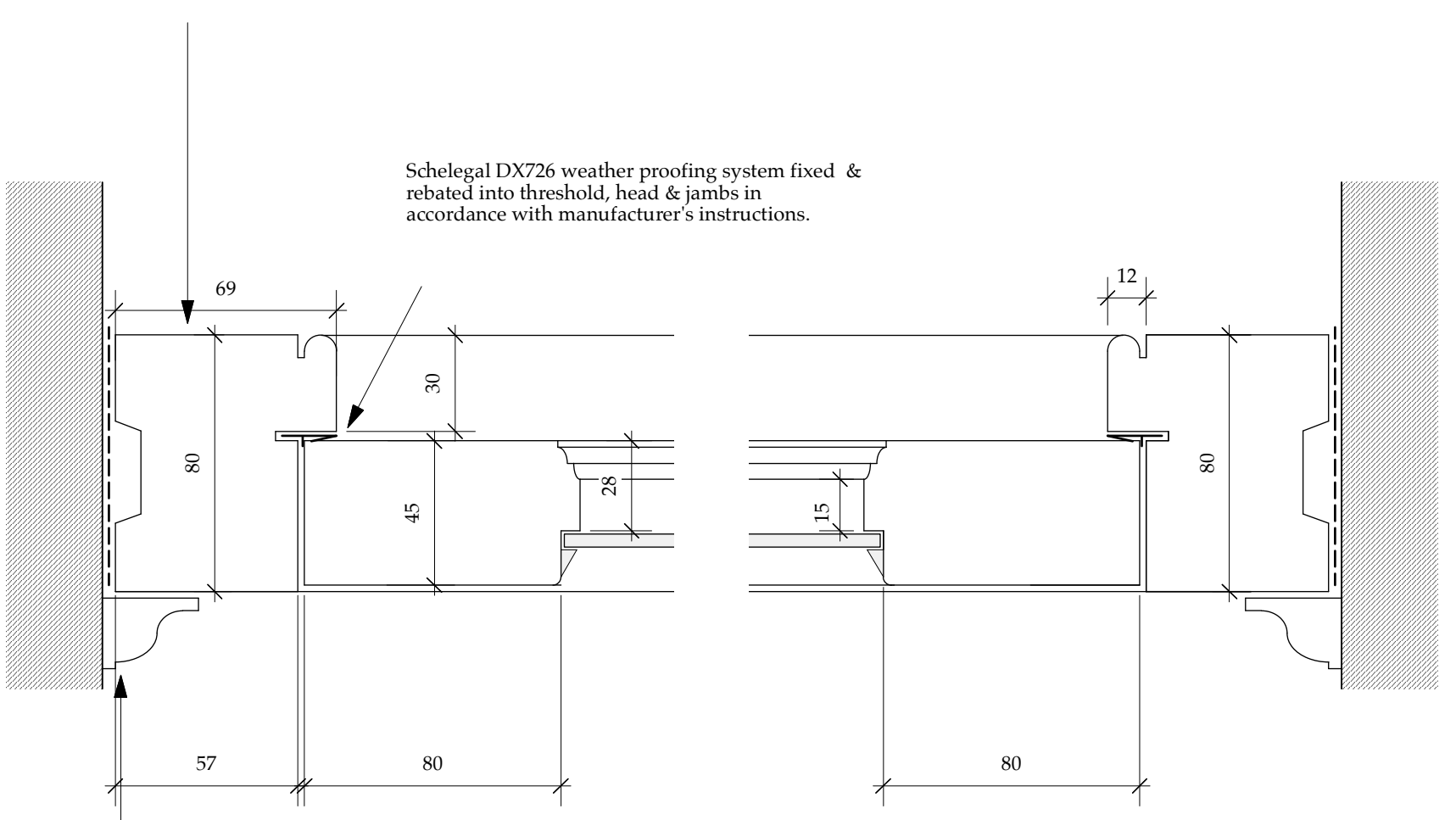
Ex 75 x 150 hardwood sill

Mastic sealant with neoprene backing strip

Weather bar bedded into stone sill

STONE SILL

Composite frame post showing external moulding details only to be made from treated hw of appropriate sections to provide adequate support to fixed and hinged members.



DOOR JAMB **OUTWARD OPENING DOOR**

Schelegal DX726 weather proofing system fixed & rebated into threshold, head & jambs in accordance with manufacturer's instructions.

External moulding to match double hung sash window detail

HORIZONTAL SECTION
scale 1:2

Aj Architects Ltd.

PROJECT NO. 21/721
59 St George's Road
Cheltenham
Glos. GL50 3DU

DRAWING TITLE: Proposed New Door from Kitchen
SCALE: 1:10, 1:2 @ A1

DRAWING NO. 420
REVISION (-)
DATE Aug 2021

ANTHEA JACKSON BA(Hons) Arch Dip (Arch) RIBA
11 PRINCES STREET
CHELTENHAM
GLOUCESTERSHIRE
GL52 6BE
Tel: (01242) 581101
Mobile: (07813) 941017