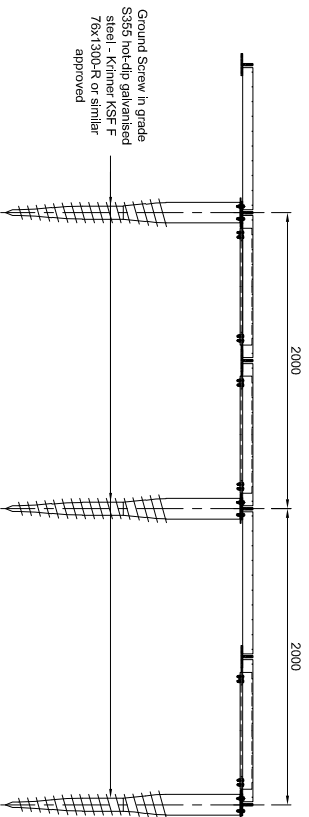
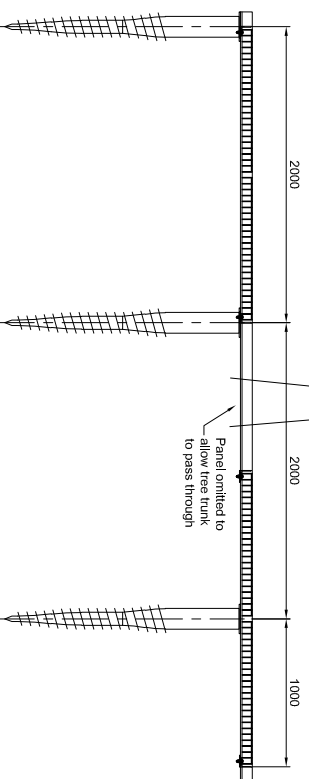


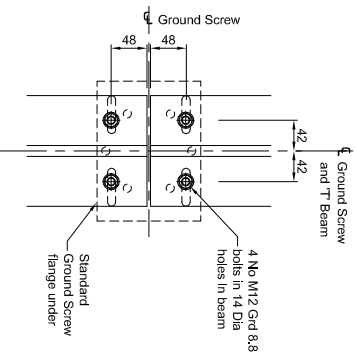
PLAN ON TYPICAL ROOTBRIDGE PLATFORM GRILLAGE
Scale 1:25



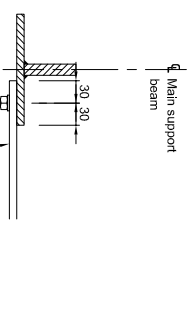
SECTION B-B
Scale 1:25



MAIN BEAM DETAILS
Scale 1:5



PLAN ON 'T' BEAM TO GROUND SCREW CONNECTION
Scale 1:5



SECTION SHOWING FLAT PLATE CONNECTION
Scale 1:5

Notes

- GENERAL**
- This drawing is to be read in conjunction with all relevant Architect's, Engineer's and Specialist's drawings and the Specification.
 - In case of a discrepancy between drawings or a lack of dimensions W.F. Brown Associates Limited must be consulted before work proceeds.
 - All dimensions are in millimetres and all levels in metres, unless noted otherwise.
- DO NOT SCALE THIS DRAWING - IF IN DOUBT ASK.**

STEELWORK

- All hot rolled steelwork to be grade S355JR to BS EN10025, all plates to be S275 unless noted otherwise.
 - All structural steelwork is to be fabricated and erected in accordance with the current National Structural Steelwork Specification for Building Construction.
 - Steelwork fabrication to be in accordance with BS5950 Part 12. All connections to be designed and detailed by the steelwork contractor / fabricator in accordance with BS5950.
 - All steelwork to comply with the National Structural Steelwork Specification for Building Construction - 5th Edition.
 - The steelwork contractor is to submit all marking plans, fabrication detail drawings and connection designs to the Engineer for comment, allowing 14 days for perusal prior to fabrication.
 - Care should be taken to ensure steel members are not marked by grinders etc. during fabrication and all weld splatters are to be cleaned off.
 - The steelwork contractor is to clean all mud and other deleterious materials from the steelwork and make good all areas of damaged paintwork (or galvanizing) prior to handing over the structure to the main contractor.
 - No site burning, welding or drilling to be undertaken without prior approval by the Engineer.
- FINISHES**
- All steelwork to be shot blasted to SA2 1/2 to remove all surface contamination, rust and millscale prior to applying a H.B. zinc phosphate primer with a dry film thickness of 75 microns.
 - All external steelwork to be hot dip galvanised to BS EN 10346. All weathering bolts to be powder coated and plates of hollow members etc. see also the visible after erection.

PRELIMINARY

Project Name
GREEN GRID SYSTEMS

No.	Date	Revised / Issued	By
P1	05/10/17	Preliminary Issue	SPF

W.F. Brown Associates Limited
CONSULTING CIVIL & STRUCTURAL ENGINEERS

The Old Haycock, Puckhill Farm, Dover Lane, Buntingford, Cambridgeshire, SG9 5JL, UK
Tel: 01763 848484 Email: enquiries@wfbrown.co.uk Website: www.consulting-engineers.co.uk

Company Number: 2011

This drawing is the copyright of W.F. Brown Associates. It may not be copied, altered or reproduced in any way without their authority. This drawing must not be scaled. Use figured dimensions only. IF IN DOUBT ASK!

Drawing the
ROOTBRIDGE SYSTEM
LIGHT DUTY OPTION
PLAN, SECTIONS AND DETAILS

Created By	Checked By	Approved By
S P FAGAN	O J STUBBS	

Scale AS INDICATED @ A1 Date OCTOBER 2017

Draw Number 17221-001 Rev. C1