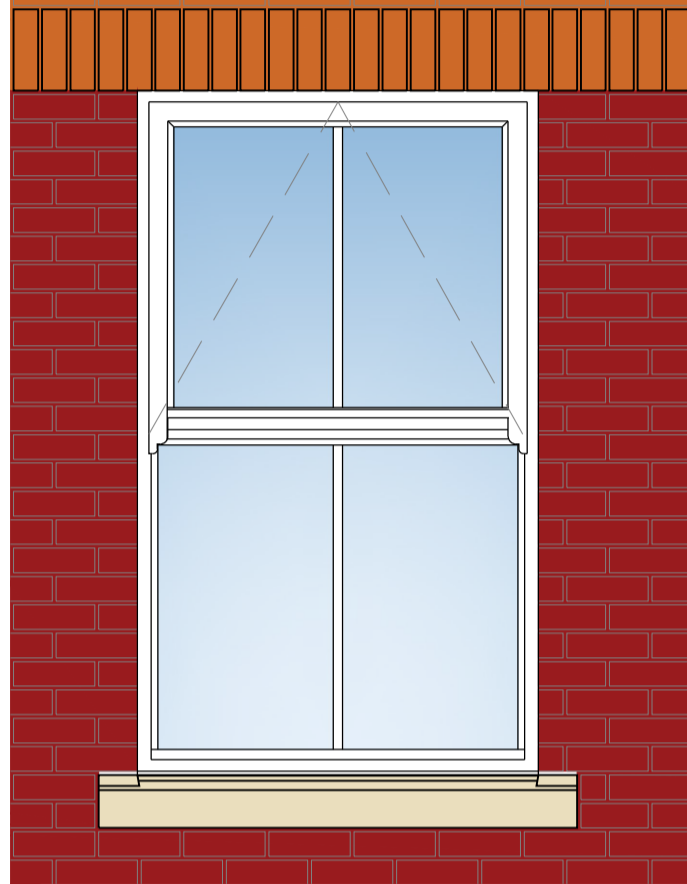
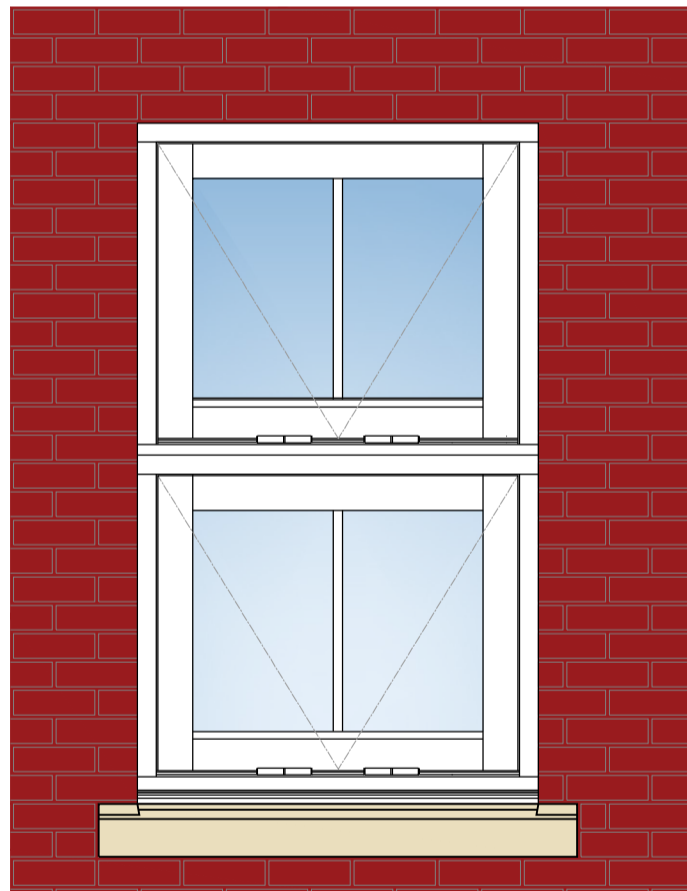


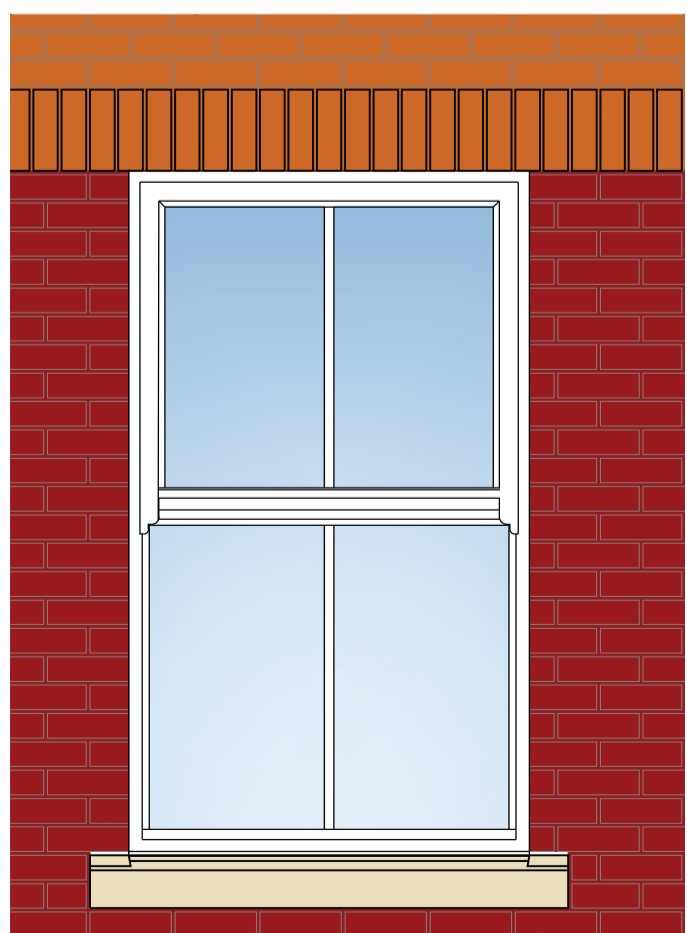
**Typical Window Type 2 Elevation - 1:20**  
 Material - uPVC  
 Colour - White



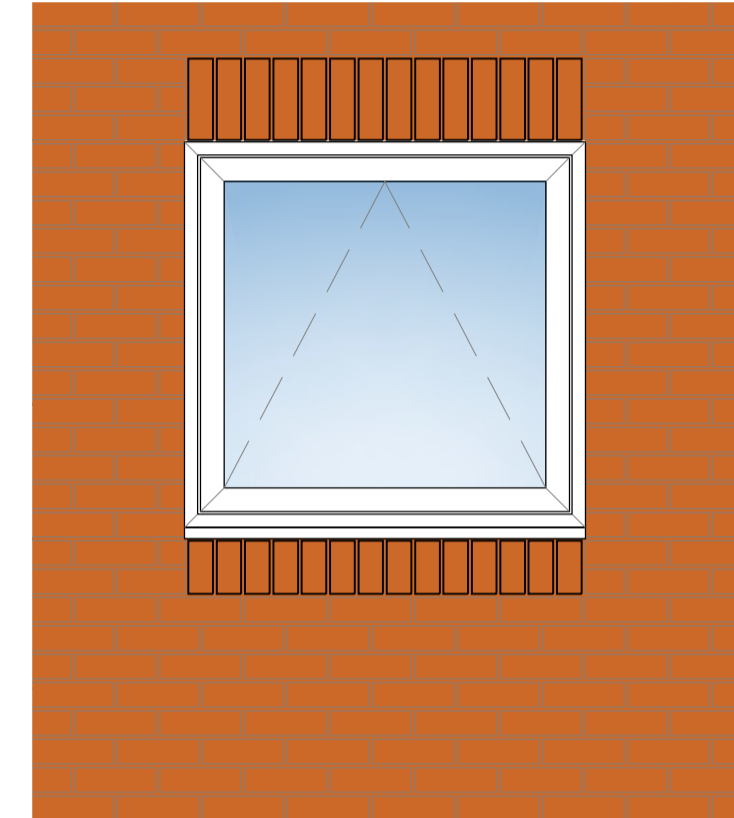
**Typical Window Type 1 Elevation - 1:20**  
 Material - Timber  
 Colour - White



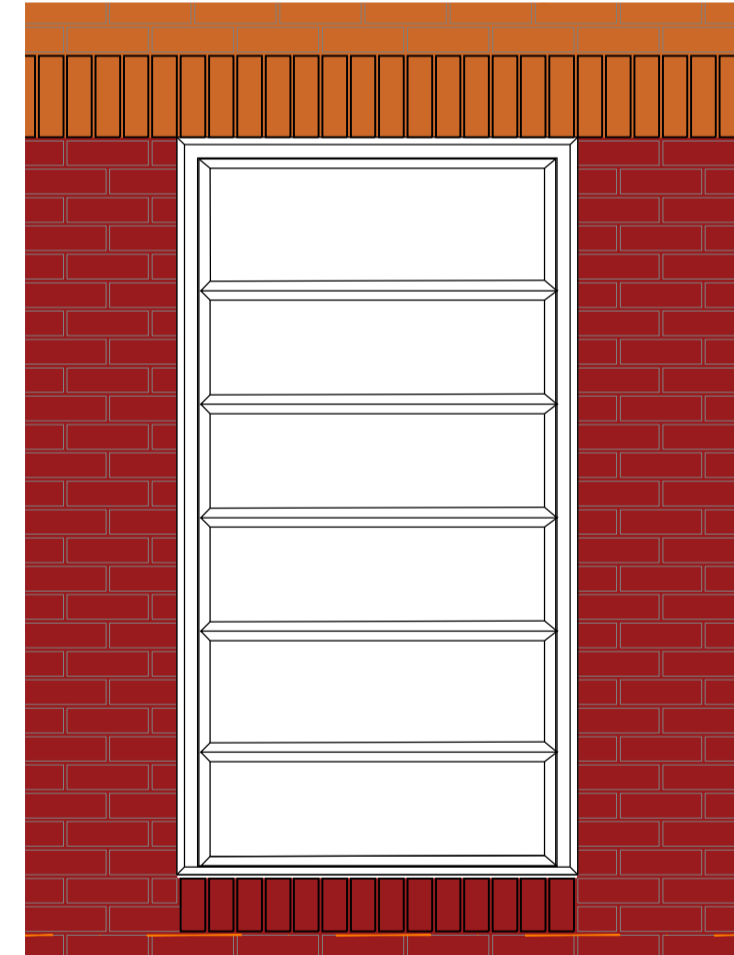
**Typical Window Type 4 Elevation - 1:20**  
 Material - Timber AOV  
 Colour - White



**Typical Window Type 6 Elevation - 1:20**  
 Material - Timber Fixed  
 Colour - White



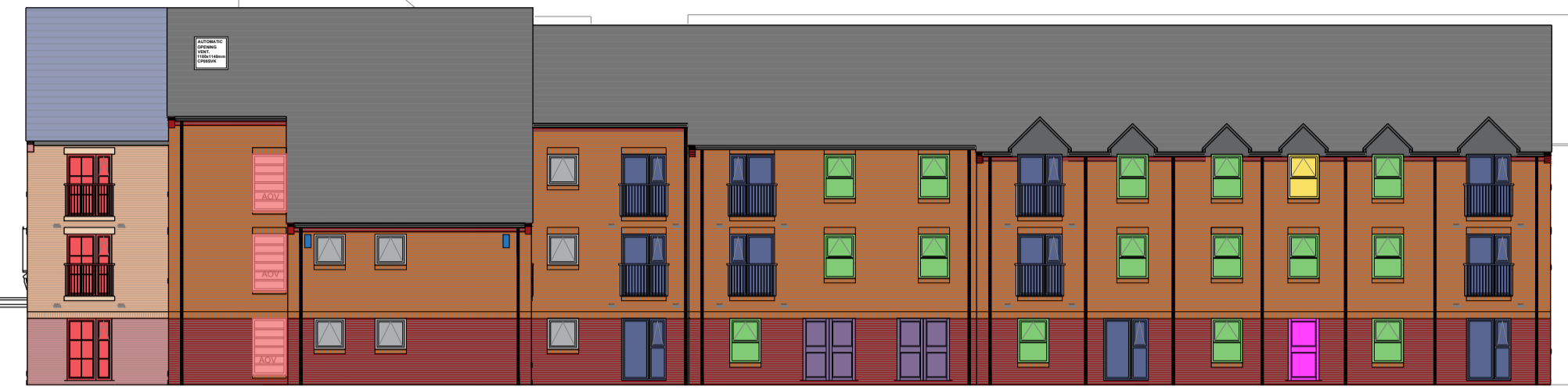
**Typical Window Type 3 Elevation - 1:20**  
 Material - uPVC  
 Colour - White



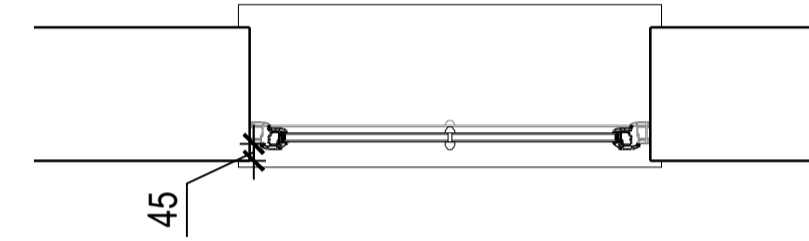
**Typical Window Type 5 Elevation - 1:20**  
 Material - Aluminium AOV  
 Colour - White



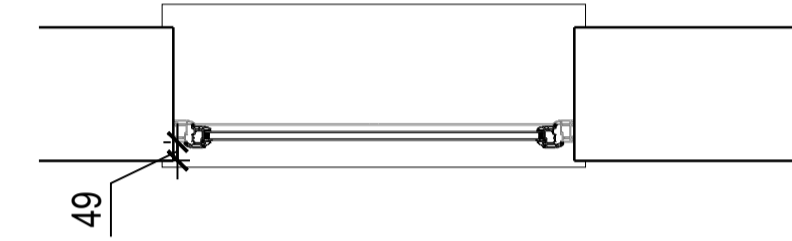
Northern Elevation



Southern Elevation



**Timber Mock Sash Window Plan 1:20**



**uPVC Window Plan 1:20**



**Typical Door Type 1 Elevation - 1:20**  
 Material - Timber  
 Colour - White



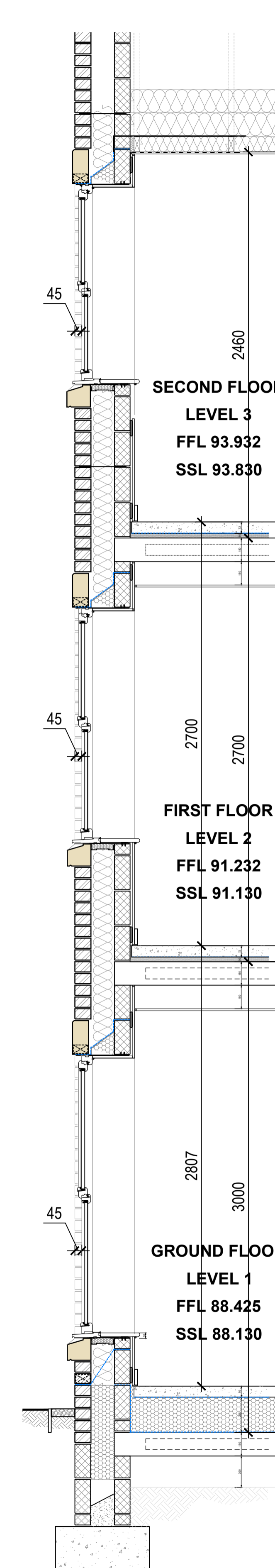
**Typical Door Type 2 Elevation - 1:20**  
 Material - uPVC  
 Colour - White



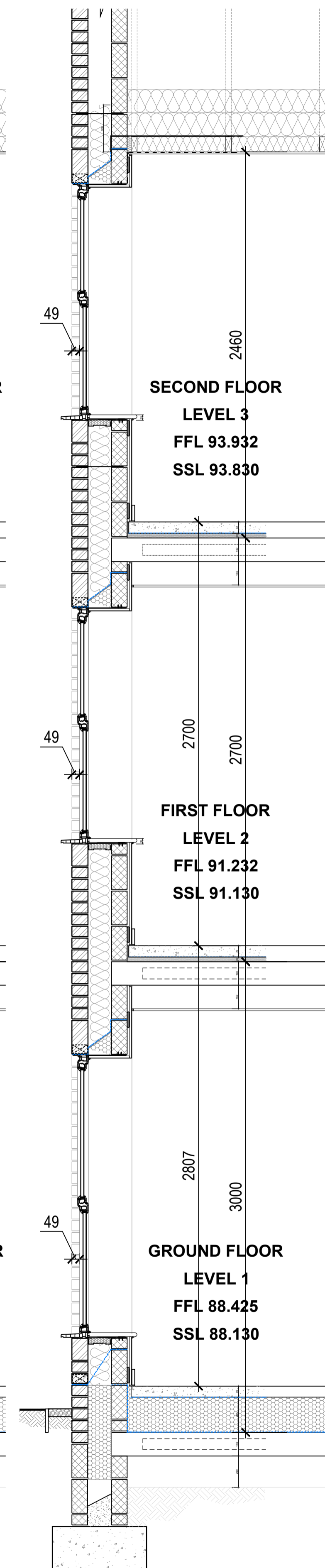
Western Elevation



\* Signage to be confirmed



**Typical Stone Head & Cill Section - Timber Mock Sash Windows 1:20**



**Typical Brick Soldier Head & Cill Standard uPVC Section - 1:20**

Notes

- Copyright in this drawing remains the property of BM3 Architecture Limited.
- Do not scale this drawing.
- Work to figured dimensions only.
- Contractors and consultants are to advise BM3 Architecture Limited of any discrepancies.

Revision	Date	By	Chkd
A - Elevations added	15.03.21	KB	RSJ
B - 900 added	05.06.21	KB	RSJ
C - Revised to match latest elevations and window section details updated	23.06.21	KB	RSJ

**PRELIMINARY**

Client

**McCarthy & Stone**  
 Retirement living to the full

Project  
 36 STAFFORD STREET  
 MARKET DRAYTON  
 SHROPSHIRE

CISb Element

Drawing  
 Window Elevations and Sections

Drawn by KB	Checked RJ
Scale 1:20@A1	Dated 12.03.2021
Job No. 70541	Drawing No. / Revision

Birmingham Office  
 28 Pickford Street, Digbeth, Birmingham, B5 5QH  
 T. 0121 633 0000 F. 0121 633 0300 E. design@bm3.co.uk

**BM3**

McCarthy & Stone Drawing No. WM-2580-04-AC-460	Revision C
---	---------------