

Rev	Description	Date

Project North

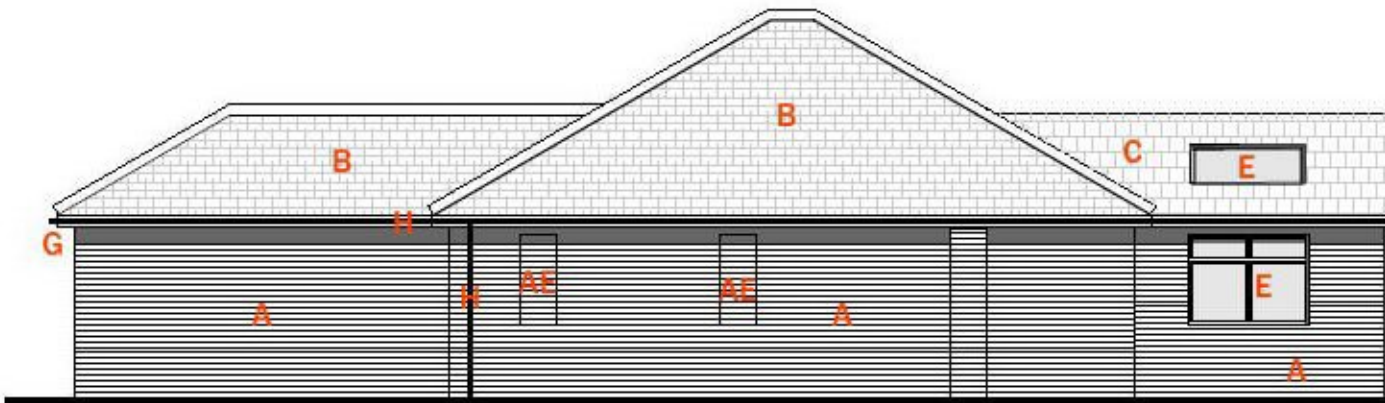


Scale: 1:100 Plotter Size: A3

Elevations as Proposed

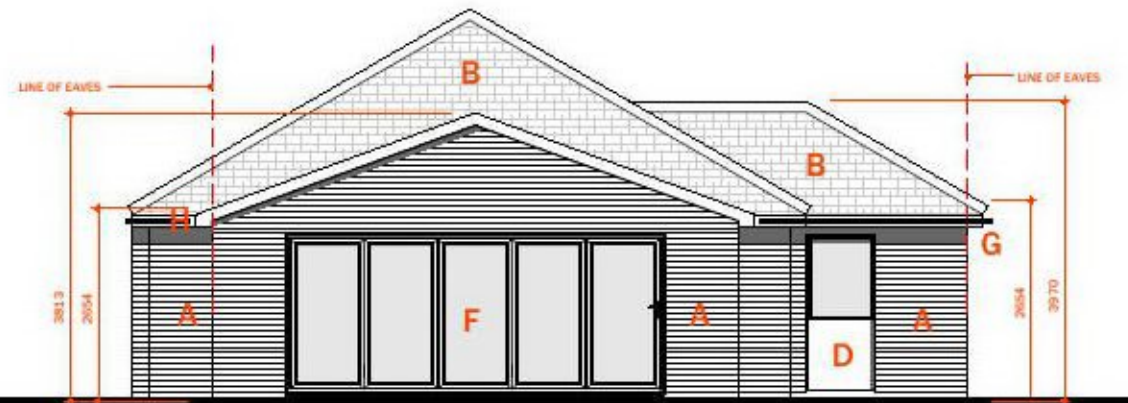
A2.2

Sheet No.



1 SIDE ELEVATION

SCALE: 1:100



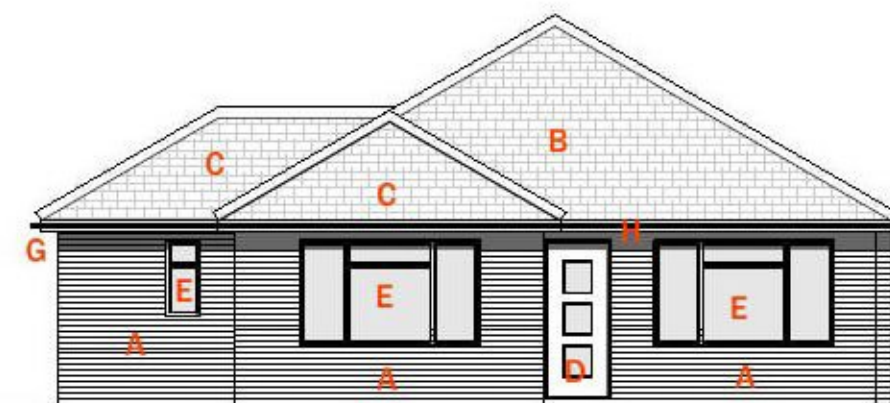
2 REAR ELEVATION

SCALE: 1:100



3 SIDE ELEVATION

SCALE: 1:100



4 FRONT ELEVATION

SCALE: 1:100

MATERIALS

- A - RED FACING BRICKWORK
- B - CONCRETE PLAIN TILE,
- C - SLATE
- D - COMPOSITE DOORS
- E - LIGHT OAK TIMBER WINDOWS
- AE - EXISTING WINDOW OPENING BLOCKED UP
- F - TIMBER BIFOLD DOORS
- G - BLACK TIMBER FASCIAS/SOFFITS
- H - BLACK uPVC RAINWATER GOODS
- I - BLACK CAST IRON SOIL STACK

1:100



PLANNING ISSUE