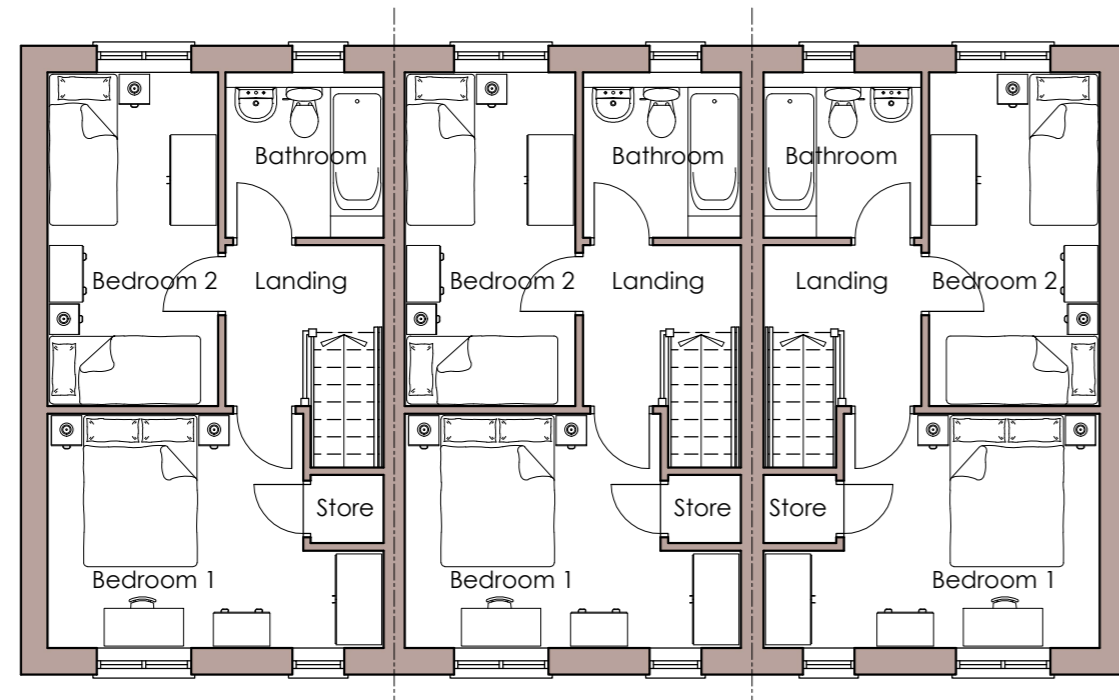




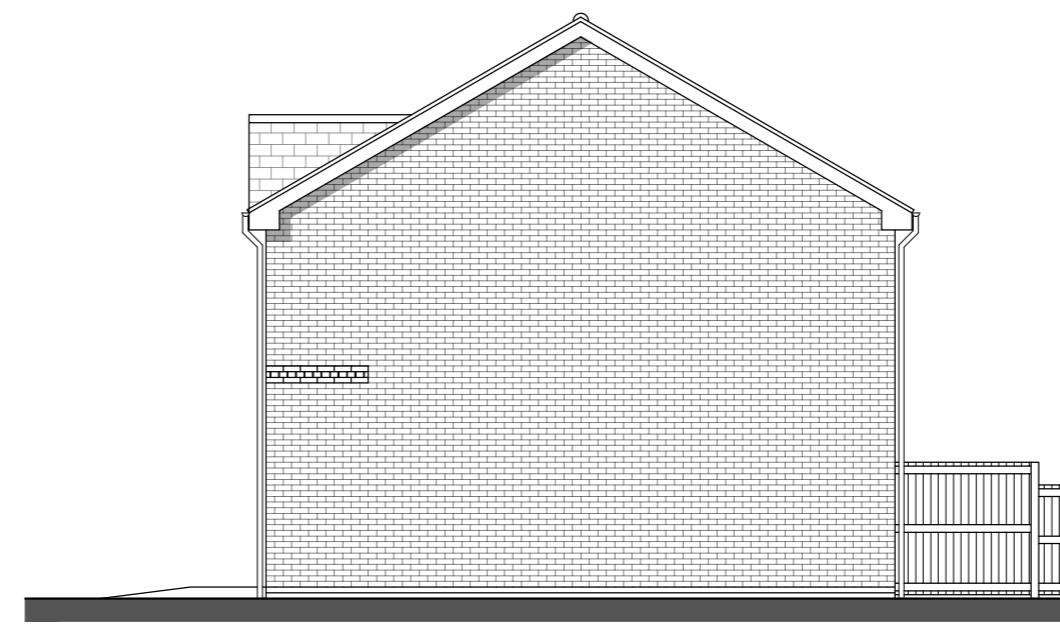
Front Elevation - Terrace of 3
2 Bedroom 4 Person House Type 68sq.m



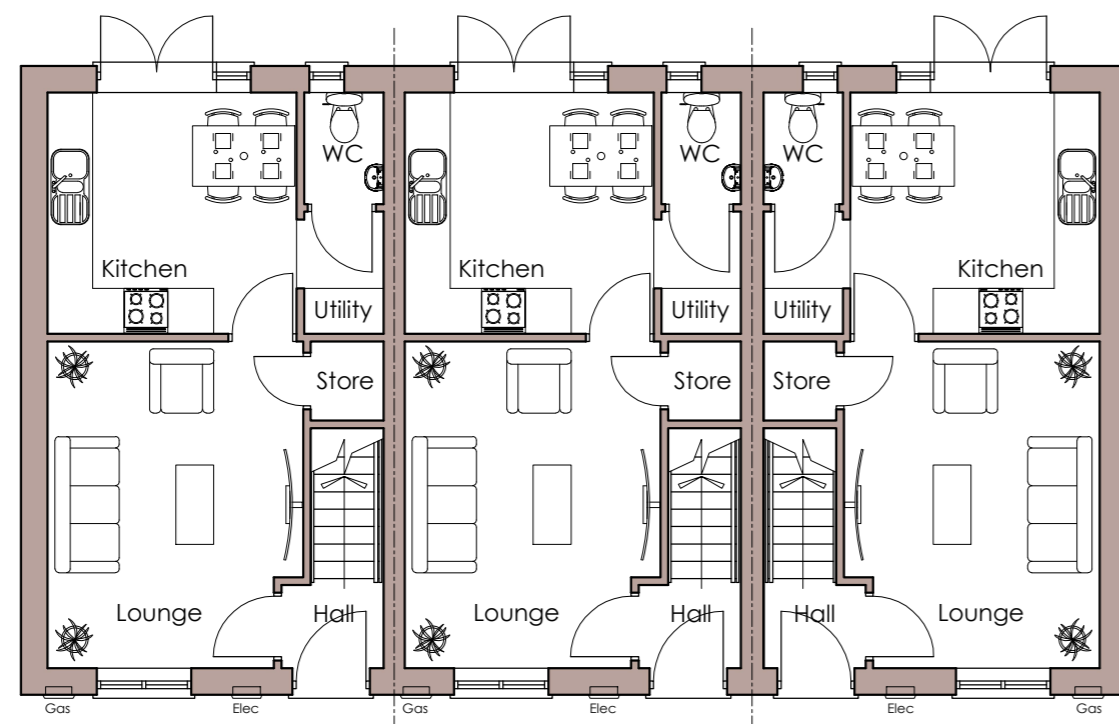
Rear Elevation - Terrace of 3
2 Bedroom 4 Person House Type 68sq.m



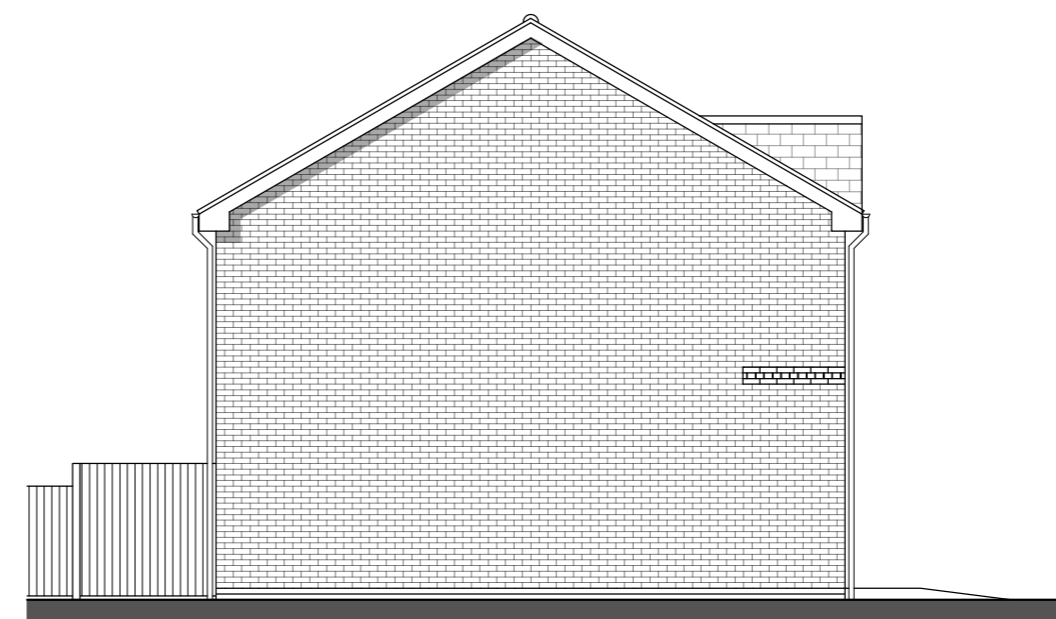
First Floor Plan - Terrace of 3
2 Bedroom 4 Person House Type 68sq.m



Side Elevation - Terrace of 3
2 Bedroom 4 Person House Type 68sq.m



Ground Floor Plan - Terrace of 3
2 Bedroom 4 Person House Type 68sq.m



Side Elevation
2 Bedroom 4 Person House Type 68sq.m

REV	DATE	DESCRIPTION
-	-	-

TITLE
**2 BED 4 PERSON HOUSE TYPE (68)
FLOOR PLANS & ELEVATIONS - 3 BLOCK**

PROJECT
CROPPER ROAD, BLACKPOOL

DRAWING NUMBER	DATE	SCALE	REV
CROPPER ROAD - P07	JULY.21	1:100 @ A2	-