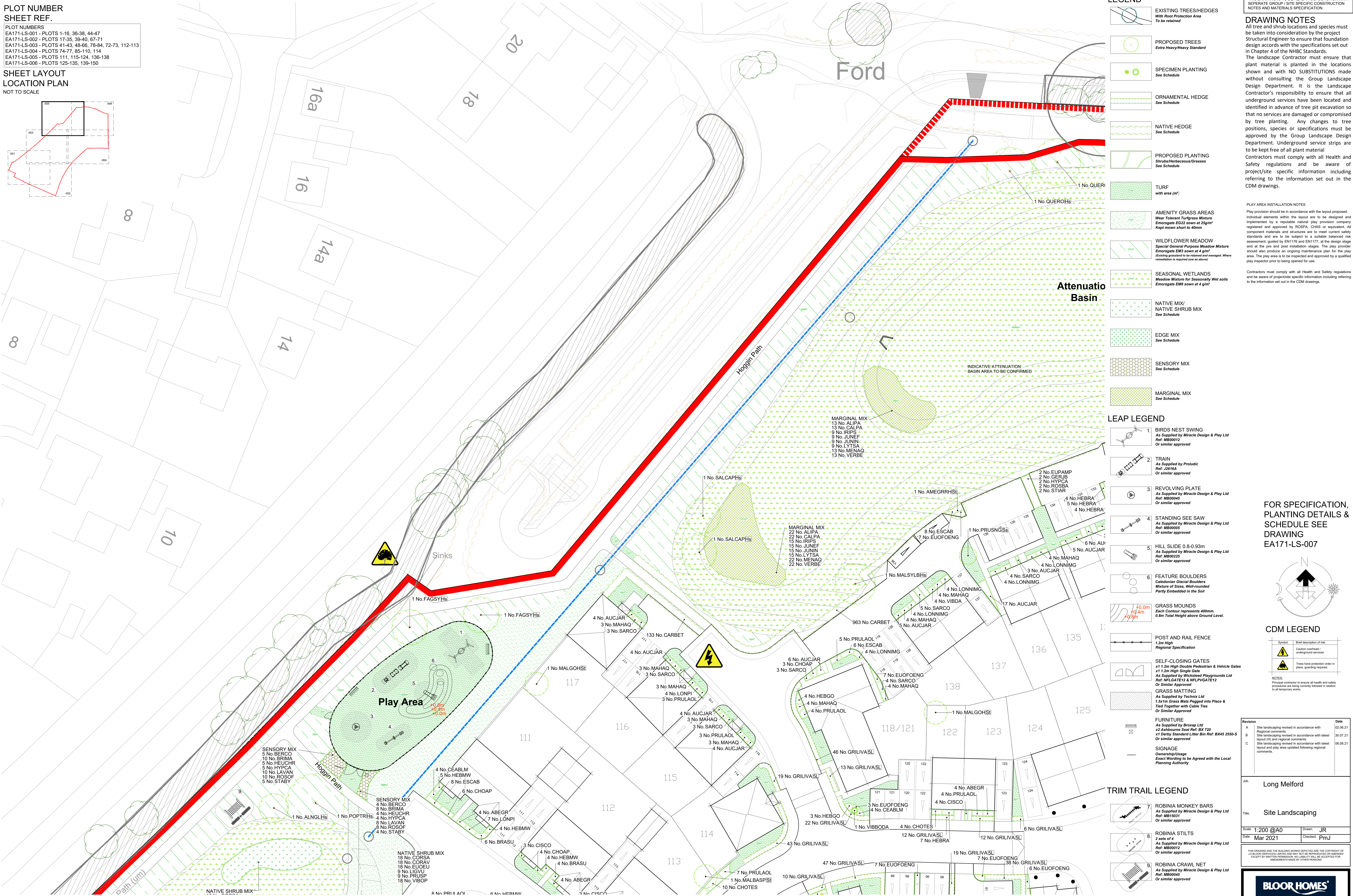
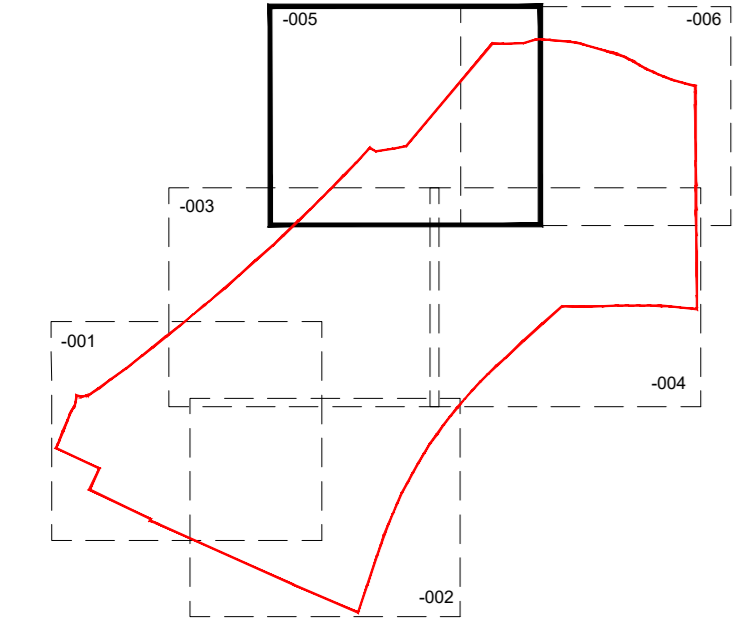


PLOT NUMBER SHEET REF.
 PLOT NUMBERS
 EA171-LS-001 - PLOTS 1-16, 36-38, 44-47
 EA171-LS-002 - PLOTS 17-35, 39-40, 67-71
 EA171-LS-003 - PLOTS 41-43, 48-56, 76-84, 72-73, 112-113
 EA171-LS-004 - PLOTS 74-77, 85-110, 114
 EA171-LS-005 - PLOTS 111, 115-124, 136-138
 EA171-LS-006 - PLOTS 125-135, 139-150

SHEET LAYOUT LOCATION PLAN
 NOT TO SCALE



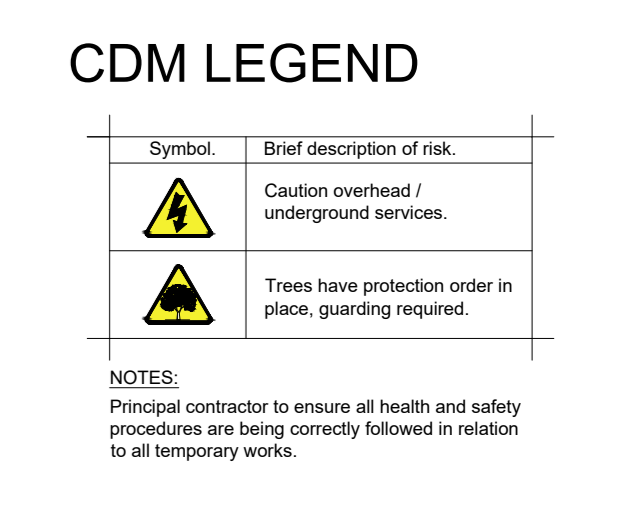
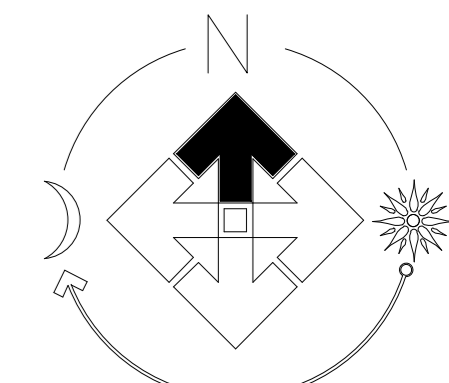
THIS DRAWING IS TO BE READ IN CONJUNCTION WITH SEPARATE GROUP / SITE SPECIFIC CONSTRUCTION NOTES AND MATERIALS SPECIFICATION.

DRAWING NOTES
 All tree and shrub locations and species must be taken into consideration by the project Structural Engineer to ensure that foundation design accords with the specifications set out in Chapter 4 of the NHBC Standards.
 The landscape Contractor must ensure that plant material is planted in the locations shown and with NO SUBSTITUTIONS made without consulting the Group Landscape Design Department. It is the Landscape Contractor's responsibility to ensure that all underground services have been located and identified in advance of tree pit excavation so that no services are damaged or compromised by tree planting. Any changes to tree positions, species or specifications must be approved by the Group Landscape Design Department. Underground service strips are to be kept free of all plant material. Contractors must comply with all Health and Safety regulations and be aware of project/site specific information including referring to the information set out in the CDM drawings.

PLAY AREA INSTALLATION NOTES
 Play provision should be in accordance with the layout proposed. Individual elements within the layout are to be designed and implemented by a reputable natural play provision company registered and approved by ROSPA, CHAS or equivalent. All component materials and structures are to meet current safety standards and are to be subject to a suitable balanced risk assessment, guided by EN1176 and EN1177, at the design stage and at the pre and post installation stages. The play provider should also produce an ongoing maintenance plan for the play area. The play area is to be inspected and approved by a qualified play inspector prior to being opened for use.

Contractors must comply with all Health and Safety regulations and be aware of project/site specific information including referring to the information set out in the CDM drawings.

FOR SPECIFICATION, PLANTING DETAILS & SCHEDULE SEE DRAWING EA171-LS-007



Revision	Date
A	02.06.21
B	30.07.21
C	06.08.21

Job: Long Melford	
Title: Site Landscaping	
Scale: 1:200 @A0	Drawn: JR
Date: Mar 2021	Checked: FmJ

THIS DRAWING AND THE BUILDING WORKS DEFINED ARE THE COPYRIGHT OF BLOOR HOMES (SERVICES) LIMITED. NO PART OF IT WILL BE ACCEPTED FOR REPRODUCTION OR TRANSMISSION IN ANY FORM OR BY ANY MEANS, ELECTRONIC OR MECHANICAL, INCLUDING PHOTOCOPYING, RECORDING, OR BY ANY INFORMATION STORAGE AND RETRIEVAL SYSTEM, WITHOUT PERMISSION IN WRITING FROM BLOOR HOMES (SERVICES) LIMITED.

BLOOR HOMES
 J S BLOOR (SERVICES) LIMITED
 ASHBY ROAD, MEASHAM, SWADLINCOTE,
 DERBYSHIRE DE12 7JF
 TELEPHONE 01530 270100 FACSIMILE 01530 272006

LONG MELFORD

Drawing No: EA171-LS-005c