

**LEGEND**

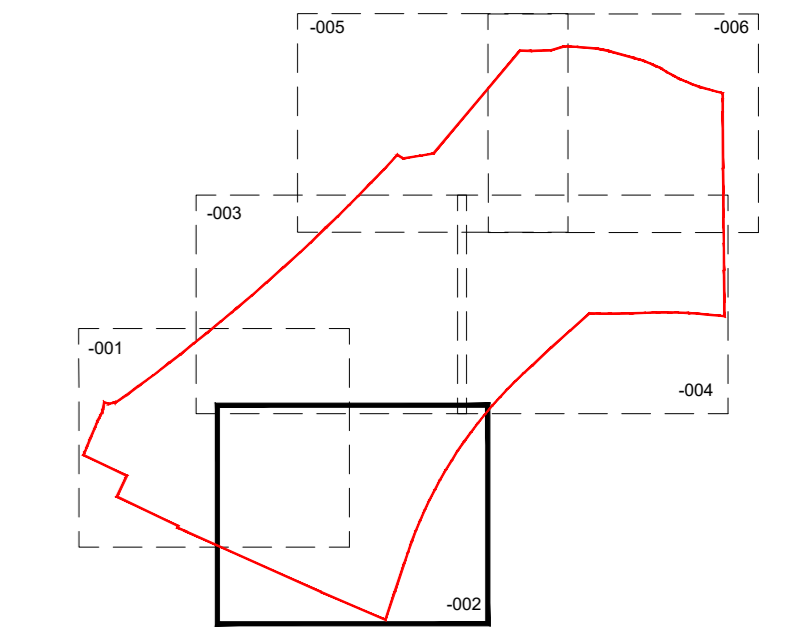
- EXISTING TREES/HEDGES  
With Root Protection Area  
To be retained
- PROPOSED TREES  
Extra Heavy/Heavy Standard
- SPECIMEN PLANTING  
See Schedule
- ORNAMENTAL HEDGE  
See Schedule
- NATIVE HEDGE  
See Schedule
- PROPOSED PLANTING  
Shrubs/Herbaceous/Grasses  
See Schedule
- TURF  
with area (m<sup>2</sup>)
- AMENITY GRASS AREAS  
Wear Tolerant Turfgrass Mixture  
Emergate EG22 sown at 25g/m<sup>2</sup>  
Kept mown short to 40mm
- WILDFLOWER MEADOW  
Special General Purpose Meadow Mixture  
Emergate EM3 sown at 4 g/m<sup>2</sup>  
Existing grasses to be retained and managed where  
remediation is required (see above)
- SEASONAL WETLANDS  
Meadow Mixture for Seasonally Wet soils  
Emergate EM8 sown at 4 g/m<sup>2</sup>
- NATIVE MIX/  
NATIVE SHRUB MIX  
See Schedule
- EDGE MIX  
See Schedule
- SENSORY MIX  
See Schedule
- MARGINAL MIX  
See Schedule
- POST AND RAIL FENCE  
For details refer to Boundary  
Treatment Plan

**DRAWING NOTES**  
All tree and shrub locations and species must be taken into consideration by the project Structural Engineer to ensure that foundation design accords with the specifications set out in Chapter 4 of the NHBC Standards. The landscape Contractor must ensure that plant material is planted in the locations shown and with NO SUBSTITUTIONS made without consulting the Group Landscape Design Department. It is the Landscape Contractor's responsibility to ensure that all underground services have been located and identified in advance of tree pit excavation so that no services are damaged or compromised by tree planting. Any changes to tree positions, species or specifications must be approved by the Group Landscape Design Department. Underground service strips are to be kept free of all plant material. Contractors must comply with all Health and safety regulations and be aware of project/site specific information including referring to the information set out in the CDM drawings.

**CDM LEGEND**

- Caution - underground services
  - Tree root protection order in place, guarding required
- NOTES:  
Principal contractor to ensure all health and safety procedures are being correctly followed in relation to all temporary works.

**SHEET LAYOUT LOCATION PLAN**  
NOT TO SCALE

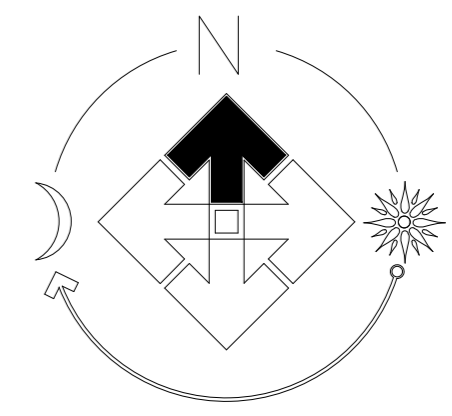


**PLOT NUMBER SHEET REF.**

- PLOT NUMBERS**  
EA171-LS-001 - PLOTS 1-16, 36-38, 44-47  
EA171-LS-002 - PLOTS 17-35, 39-40, 67-71  
EA171-LS-003 - PLOTS 41-43, 48-66, 78-84, 72-73, 112-113  
EA171-LS-004 - PLOTS 74-77, 85-110, 114  
EA171-LS-005 - PLOTS 111, 115-124, 136-138  
EA171-LS-006 - PLOTS 125-135, 139-150

Revision	Date
A	02.06.21
B	30.07.21
C	06.08.21
D	27.08.21

Job: Long Melford  
Title: Site Landscaping  
Scale: 1:200 @A0  
Date: Mar 2021  
Drawn: JR  
Checked: FmJ



FOR SPECIFICATION, PLANTING DETAILS & SCHEDULE SEE DRAWING EA171-LS-007

THIS DRAWING AND THE BUILDING WORKS DEFINED ARE THE COPYRIGHT OF J S BLOOR (SERVICES) LIMITED AND MAY BE REPRODUCED OR AMENDED EXCEPT BY WRITTEN PERMISSION. NO LIABILITY WILL BE ACCEPTED FOR AMENDMENTS MADE BY OTHER PERSONS.

**BLOOR HOMES**  
J S BLOOR (SERVICES) LIMITED  
ASHBY ROAD, MEASHAM, SWALDINCOTE, DERBYSHIRE DE12 2JF  
TELEPHONE 01530 270100 FACSIMILE 01530 272006

**LONG MELFORD**

EA171-LS-002d