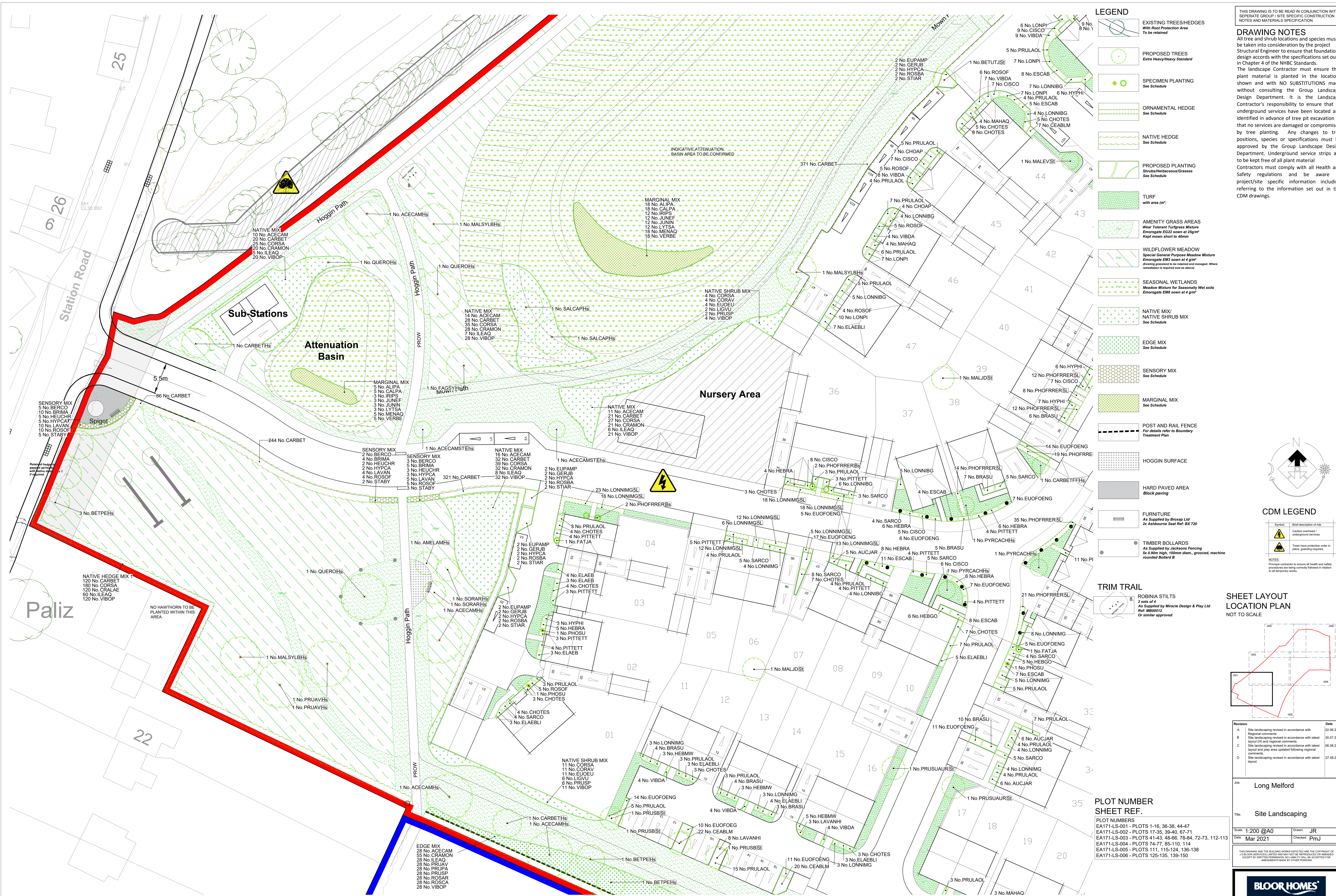


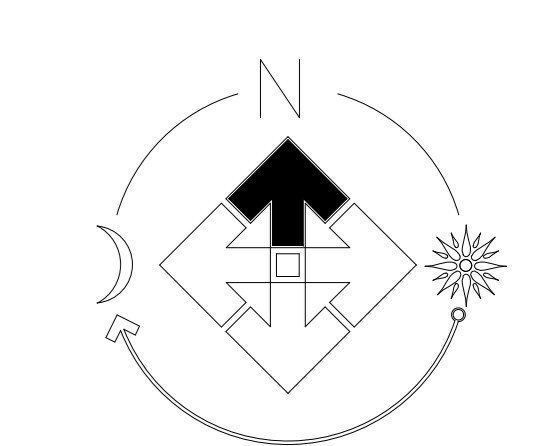
LONG MELFORD



- ### LEGEND
- EXISTING TREES/HEDGES
With Root Protection Area
To be retained
 - PROPOSED TREES
Extra Heavy/Heavy Standard
 - SPECIMEN PLANTING
See Schedule
 - ORNAMENTAL HEDGE
See Schedule
 - NATIVE HEDGE
See Schedule
 - PROPOSED PLANTING
Shrub/Herbaceous/Grasses
See Schedule
 - TURF
With area (m²)
 - AMENITY GRASS AREAS
Wear Tolerant Turfgrass Mixture
Emergata E222 sown at 25g/m²
Kept mown short to 40mm
 - WILDFLOWER MEADOW
Special General Purpose Meadow Mixture
Emergata E183 sown at 4 g/m²
(Existing grasses to be retained and managed. Where retention is required refer to schedule)
 - SEASONAL WETLANDS
Meadow Mixture for Seasonally Wet soils
Emergata E183 sown at 4 g/m²
 - NATIVE MIX/
NATIVE SHRUB MIX
See Schedule
 - EDGE MIX
See Schedule
 - SENSORY MIX
See Schedule
 - MARGINAL MIX
See Schedule
 - POST AND RAIL FENCE
For details refer to Boundary Treatment Plan
 - HOGGIN SURFACE
 - HARD PAVED AREA
Block paving
 - FURNITURE
As Supplied by Broxap Ltd
2x Ashbourne Seat Ref: BX 720
 - TIMBER BOLLARDS
As Supplied by Jacksons Fencing
5x 0.9m high, 100mm diam., grooved, machine rounded Ballard B

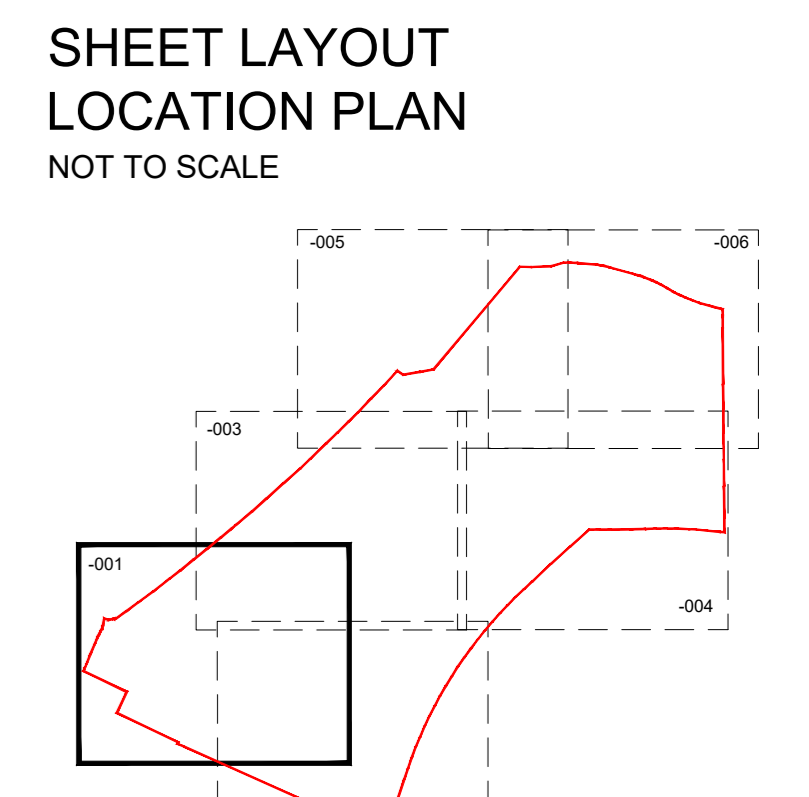
DRAWING NOTES

All tree and shrub locations and species must be taken into consideration by the project Structural Engineer to ensure that foundation design accords with the specifications set out in Chapter 4 of the NHBC Standards. The landscape Contractor must ensure that plant material is planted in the locations shown and with NO SUBSTITUTIONS made without consulting the Group Landscape Design Department. It is the Landscape Contractor's responsibility to ensure that all underground services have been located and identified in advance of tree pit excavation so that no services are damaged or compromised by tree planting. Any changes to tree positions, species or specifications must be approved by the Group Landscape Design Department. Underground service strips are to be kept free of all plant material. Contractors must comply with all Health and safety regulations and be aware of project/site specific information including referring to the information set out in the CDM drawings.



- ### CDM LEGEND
- Caution overhead or underground services
 - Tree have protection order in place, guarding required
- NOTES:
Principal contractor to ensure all health and safety procedures are being correctly followed in relation to all temporary works.

- ### TRIM TRAIL
- ROBINIA STILTS
As Supplied by Miracle Design & Play Ltd
Ref: M00012
Or similar approved



Revision	Date
A	02.05.21
B	30.07.21
C	06.08.21
D	27.08.21

Long Melford	
Site Landscaping	
Scale: 1:200 @A0	Drawn: JR
Date: Mar 2021	Checked: FmJ

PLOT NUMBER SHEET REF.

PLOT NUMBERS
EA171-LS-001 - PLOTS 1-16, 36-38, 44-47
EA171-LS-002 - PLOTS 17-35, 39-40, 67-71
EA171-LS-003 - PLOTS 41-43, 48-66, 72-73, 112-113
EA171-LS-004 - PLOTS 74-77, 85-110, 114
EA171-LS-005 - PLOTS 111, 115-124, 136-138
EA171-LS-006 - PLOTS 125-135, 139-150

FOR SPECIFICATION, PLANTING DETAILS & SCHEDULE SEE DRAWING EA171-LS-007

BLOOR HOMES
J S BLOOR (SERVICES) LIMITED
ASHBY ROAD, MEASHAM, SWALDINCOTE, DERBYSHIRE DE12 2JF
TELEPHONE 01530 270100 FACSIMILE 01530 272006

EA171-LS-001d